

COMMERCIAL / LOFT BUILDING AVAILABLE FOR LEASE BUSY TRANSIT CENTER LOCATION SUITED FOR INDUSTRIAL - OFFICE - SHOWROOM - ARTISAN USE

636 E STATE STREET TRENTON NJ



Location Highlights

- Located just one Block from the busy Trenton Train Station at the corner of East State St. and Wall St.
- Trenton Station Redevelopment Area
- Zoning: IA (Industrial A)
- Urban Enterprise Zone
- Easy Access to State Routes 1, 31, 33, 129, 206, with quick connections to Interstate Routes 95, 195, 295 and the NJ Turnpike

Property Details

- 23,000 SF
- 4 Story Building
- Clear Ceiling Height: 11ft
- Municipal water & sewer, PSE&G gas/electric
- Parking available - up to 30 spaces
- Heating: Gas fired hot air, central A/C
- Open Floor Layout
- Freight Elevaator
- Drive-in loading



1 MILE 3 MILES

Population 56,000 129,000

Income (Med) Household 76,922 83,876

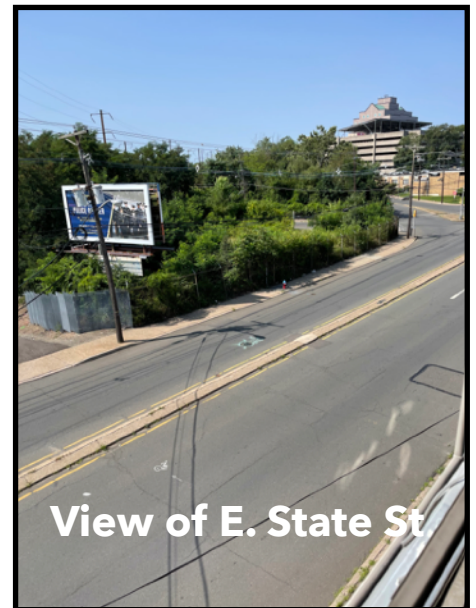
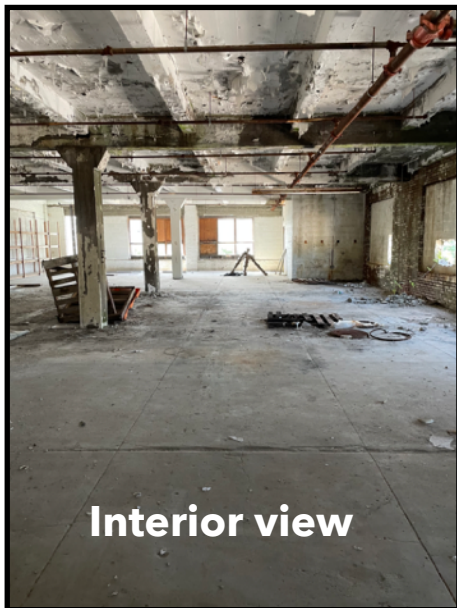


**FOR INFO CONTACT:
ANNE LABATE
609-394-7557 X 114
ANNE@SEGAL-LABATE.COM**

*Subject to change in price and withdrawal without notice



Interior Photos



**FOR INFO CONTACT:
ANNE LABATE
609-394-7557 X 114
ANNE@SEGAL-LABATE.COM**

*Subject to change in price and withdrawal without notice