



OFFICE/RETAIL BUILDING FOR SALE

4212 SOUTH HIGHLAND DRIVE, MILLCREEK, UTAH 84124

SALE PRICE: \$905,000.00
LEASE TO OWN OPTION AVAILABLE



PROPERTY INFORMATION

- ☑ 2,200 SF Freestanding Office/Retail
- ☑ Five (5) Private Offices, One (1)
- ☑ Breakroom, One (1) Restroom, And Storage Area
- ☑ 0.24 Acres
- ☑ Zoned: CB (Commercial Business)
- ☑ 10 Parking Stalls
- ☑ Great Millcreek Location

POTENTIAL SBA FINANCING SCENARIO

Down Payment: 10%

Blended Rate: 6.15%

Amortization: 25 Years

Principal: \$814,500.00

Monthly Payment: \$5,322.77

Potential Lease Option Available
Contact Agent For Details

CONTACT US

DEREK KLOPPER
✉ derek@cresutah.com

☎ 801.897.9264

ADAM HARDING
✉ adam@cresutah.com

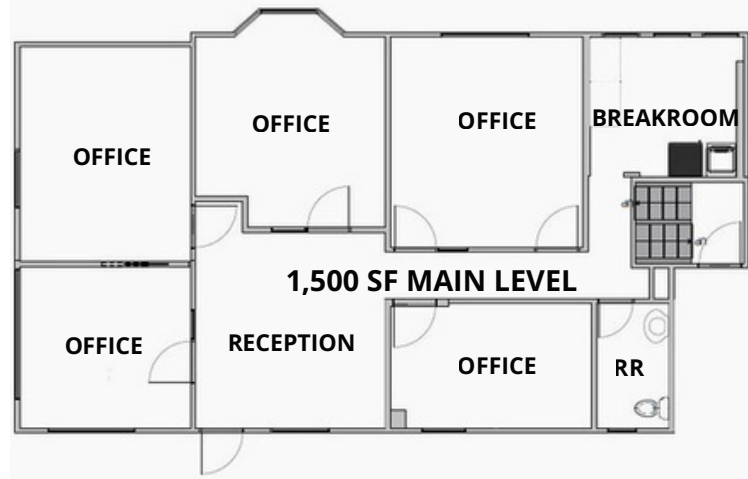
☎ 801.712.7111 🌐 www.cresutah.com

Call Us 
801.876.6070



OFFICE/RETAIL BUILDING FOR SALE

4212 SOUTH HIGHLAND DRIVE, MILLCREEK, UT 84124



This information is given with the understanding that all negotiations and/or real estate activity related to the property described above shall be conducted through this CRES office. The above information while not guaranteed, was obtained from sources we believe to be reliable.

CONTACT US

DEREK KLOPPER

✉ derek@cresutah.com ☎ 801.897.9264

ADAM HARDING

✉ adam@cresutah.com ☎ 801.712.7111 🌐 www.cresutah.com

Call Us
801.876.6070 ☎