

6325 W MCNICHOLS ROAD
DETROIT, MICHIGAN



**SIGNATURE
ASSOCIATES**
KNOW SIGNATURE | KNOW RESULTS

RETAIL FOR SALE
3,972 Square Feet Available



PROPERTY FEATURES

- 3,972 square feet available
- 14' clear height
- LIV/6 Redevelopment district
- High traffic counts
- Sale Price: \$295,000 (\$74.27/sq. ft.)



For more information, please contact:

JOE STACK
(248) 359 0615
jstack@signatureassociates.com

CHRIS MONSOUR
(248) 948 0107
cmonsour@signatureassociates.com

SIGNATURE ASSOCIATES
One Towne Square, Suite 1200
Southfield, MI 48076
www.signatureassociates.com

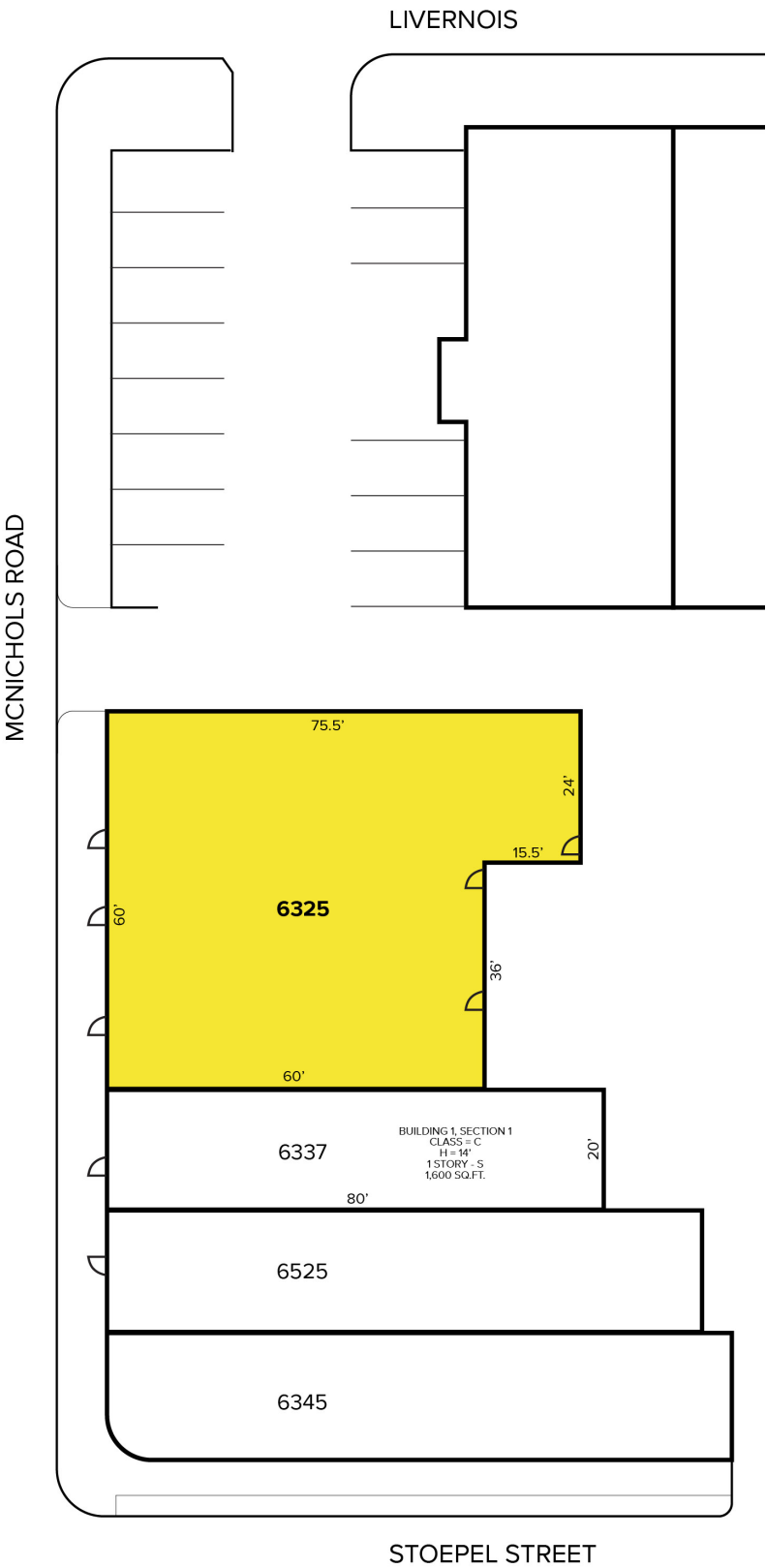
Information is subject to verification and no liability for errors or omissions is assumed. Price is subject to change and listing withdrawal.

6325 W McNichols Road – Detroit, Michigan

Retail For Sale

3,972
Square Feet
AVAILABLE

Site Plan



For more information, please contact:

JOE STACK
(248) 359 0615
jstack@signatureassociates.com

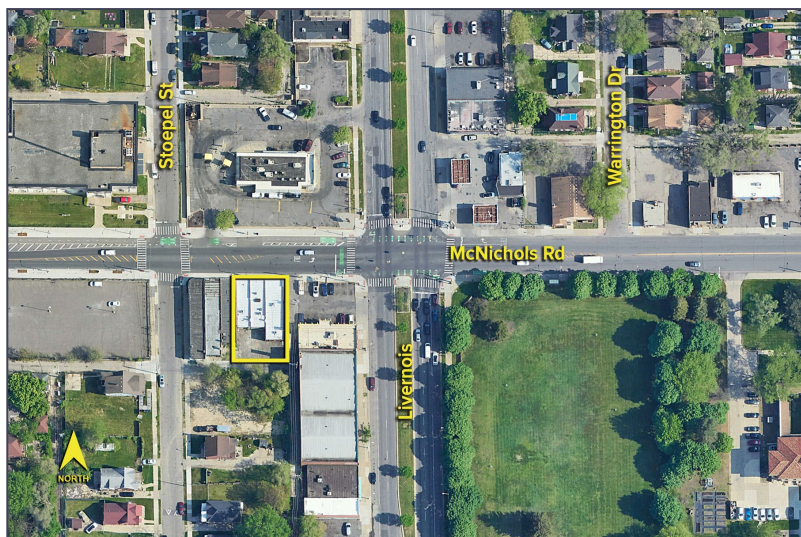
CHRIS MONSOUR
(248) 948 0107
cmonsour@signatureassociates.com

SIGNATURE ASSOCIATES
One Towne Square, Suite 1200
Southfield, MI 48076
www.signatureassociates.com

6325 W McNichols Road – Detroit, Michigan

Retail For Sale

3,972
Square Feet
AVAILABLE

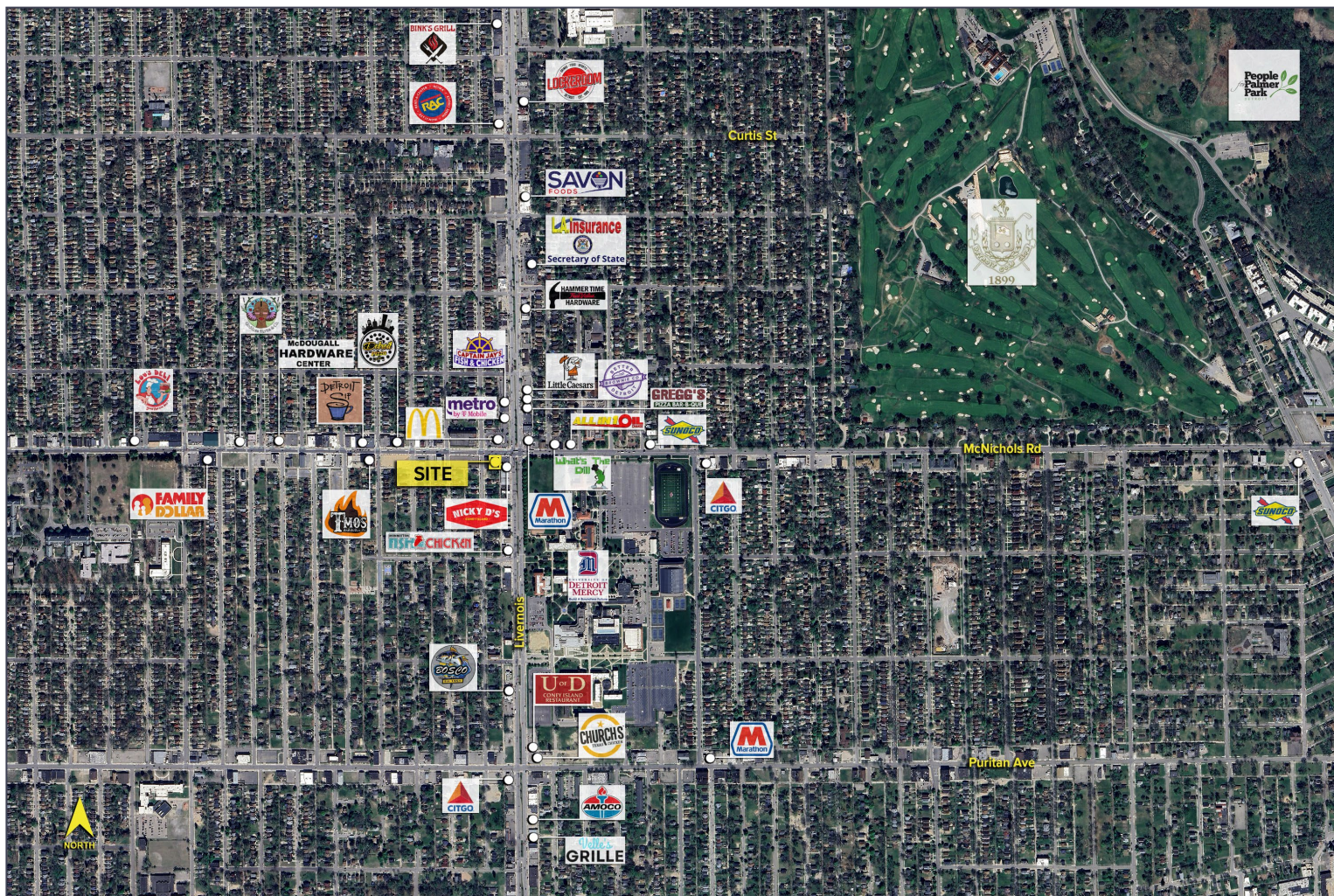


DEMOGRAPHICS

	POPULATION	MED. HH INCOME
1 MILE	22,187	\$57,069
3 MILE	148,794	\$49,708
5 MILE	435,305	\$55,095

TRAFFIC COUNTS (TWO-WAY)

15,144	McNichols Rd. E of Livernois Ave.
10,411	McNichols Rd. W of Livernois Ave.
24,859	Livernois Ave. N of McNichols Rd.
27,136	Livernois Ave. S of McNichols Rd.



For more information, please contact:

JOE STACK
(248) 359 0615
jstack@signatureassociates.com

CHRIS MONSOUR
(248) 948 0107
cmonsour@signatureassociates.com

SIGNATURE ASSOCIATES
One Towne Square, Suite 1200
Southfield, MI 48076
www.signatureassociates.com