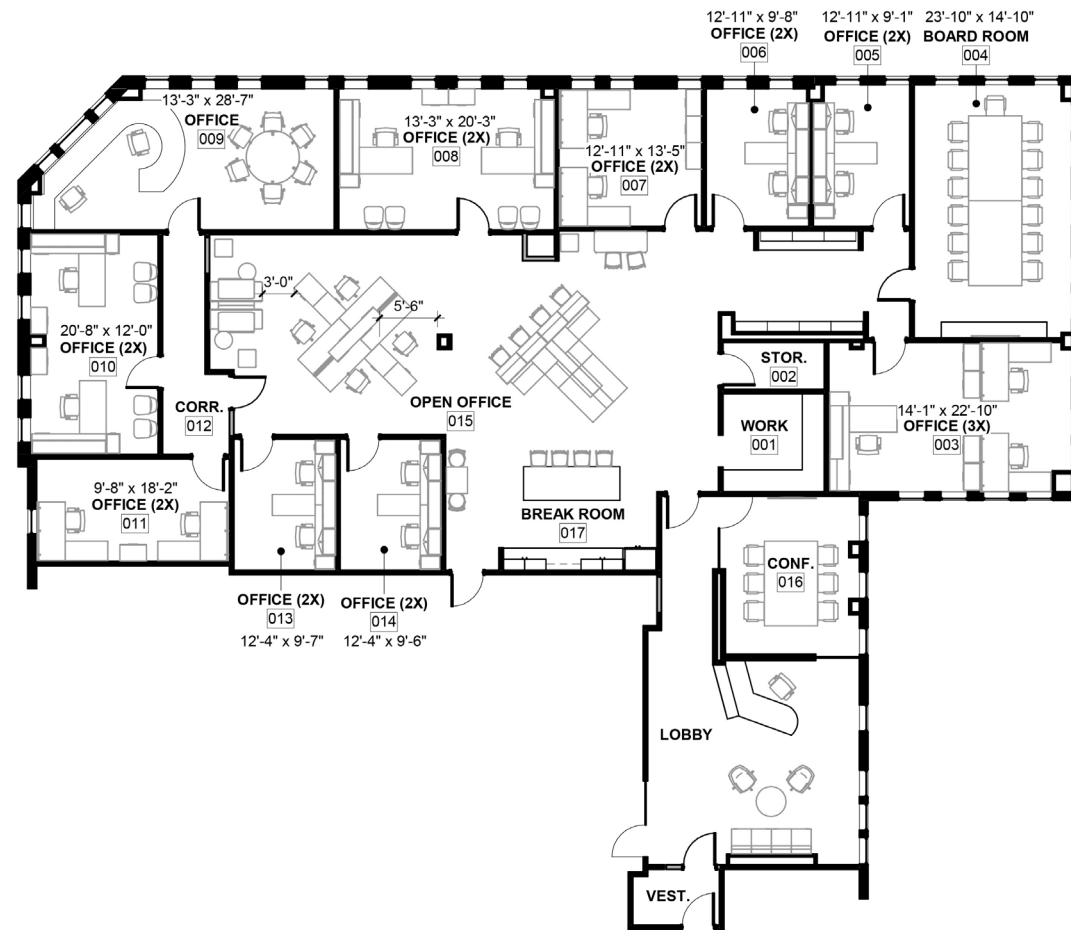


SOUTHLAKE TOWN SQUARE FLOOR PLAN



FOR SUBLEASE
AVAILABLE IMMEDIATELY

SOUTHLAKE TOWN SQUARE

Olive
Mill



Olive
Mill

CONTACT

Sean Sundby, *Managing Director*
214-435-3037
ssundby@olivemillholdings.com

Walker Hume, *Senior Vice President*
214-205-7102
whume@olivemillholdings.com

SOUTHLAKE TOWN SQUARE

181 Grand Avenue Suite 225
Southlake, Texas 76092

For Sublease

5,661 SF

Lease expiration: 3/31/2030

Quoting: \$40.50 +E

Furniture Available

AVAILABLE IMMEDIATELY

- Reception
- Large Boardroom
- 1 Small Internal Conference Room
- 10 Offices Total (4 Large Executive)
- Open Breakroom
- Open Collaborative Bullpen
- 11 Cubicles
- Work Room
- Storage



Olive
Mill