



LEASE AVAILABLE

2901 KINWEST PKY

2901 Kinwest Pky Irving, TX 75063



SPACE HIGHLIGHTS



PREMISES

Floor 2: 20,078 SF, Floor 3: 13,530 SF
Total: 33,841 SF



RATE

\$18.00/SF NNN



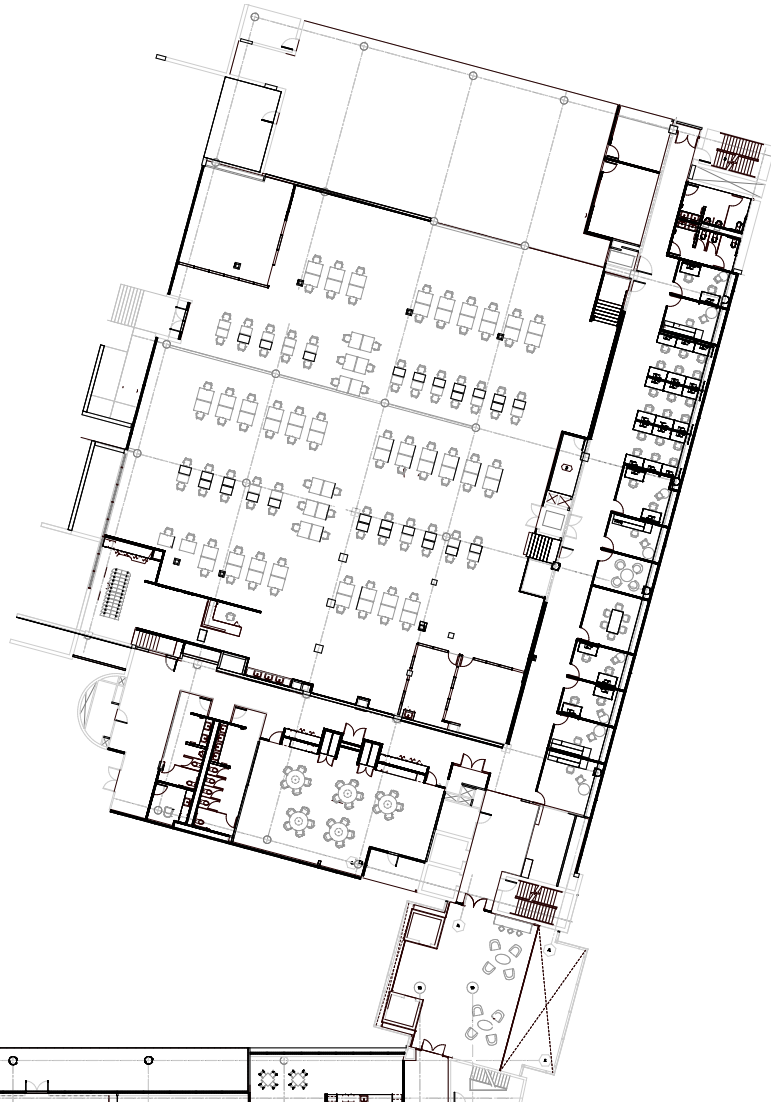
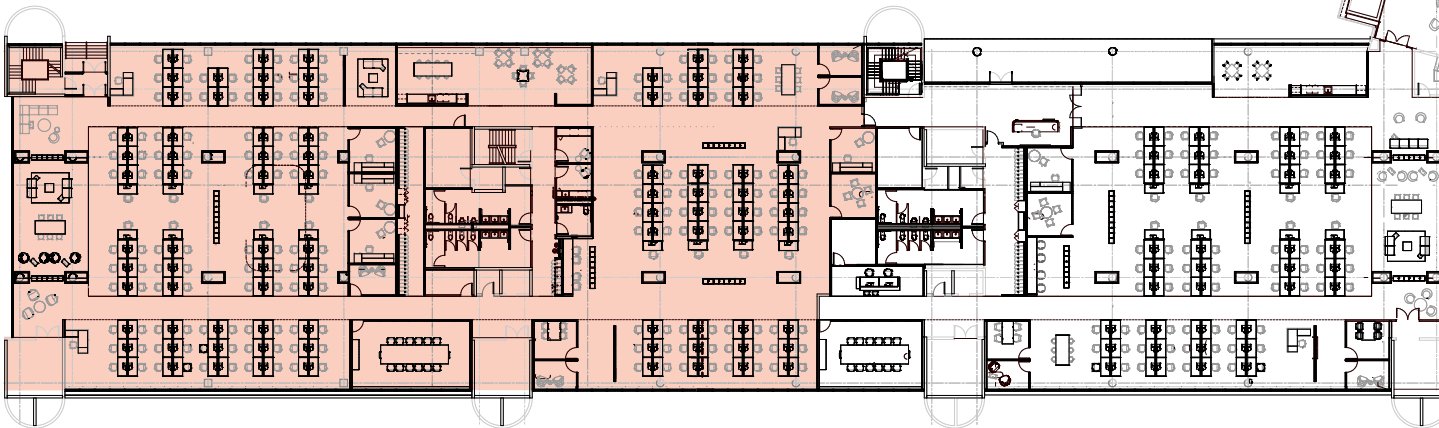
AVAILABILITY

Immediately

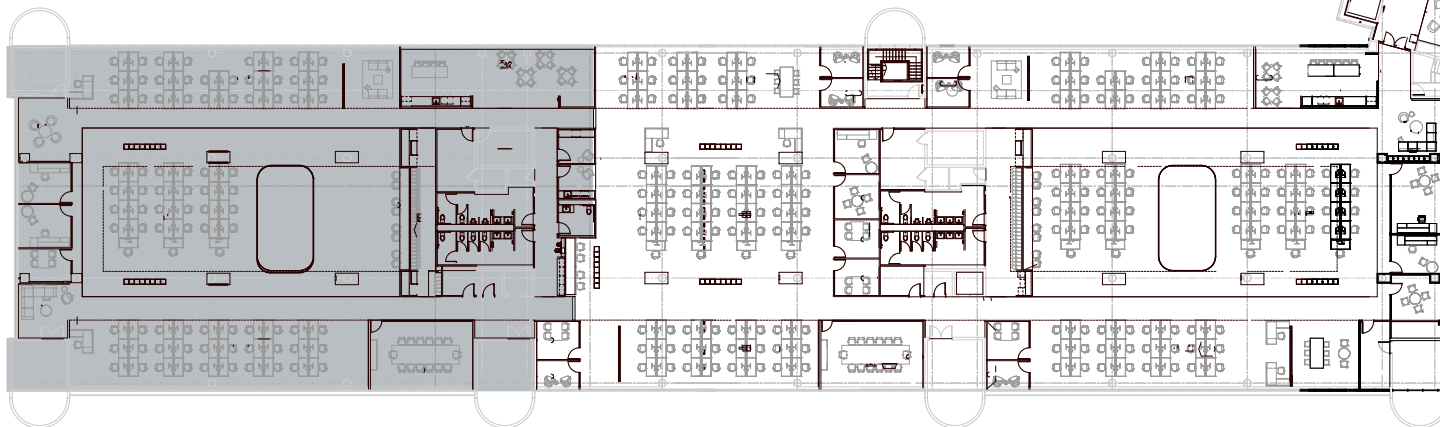
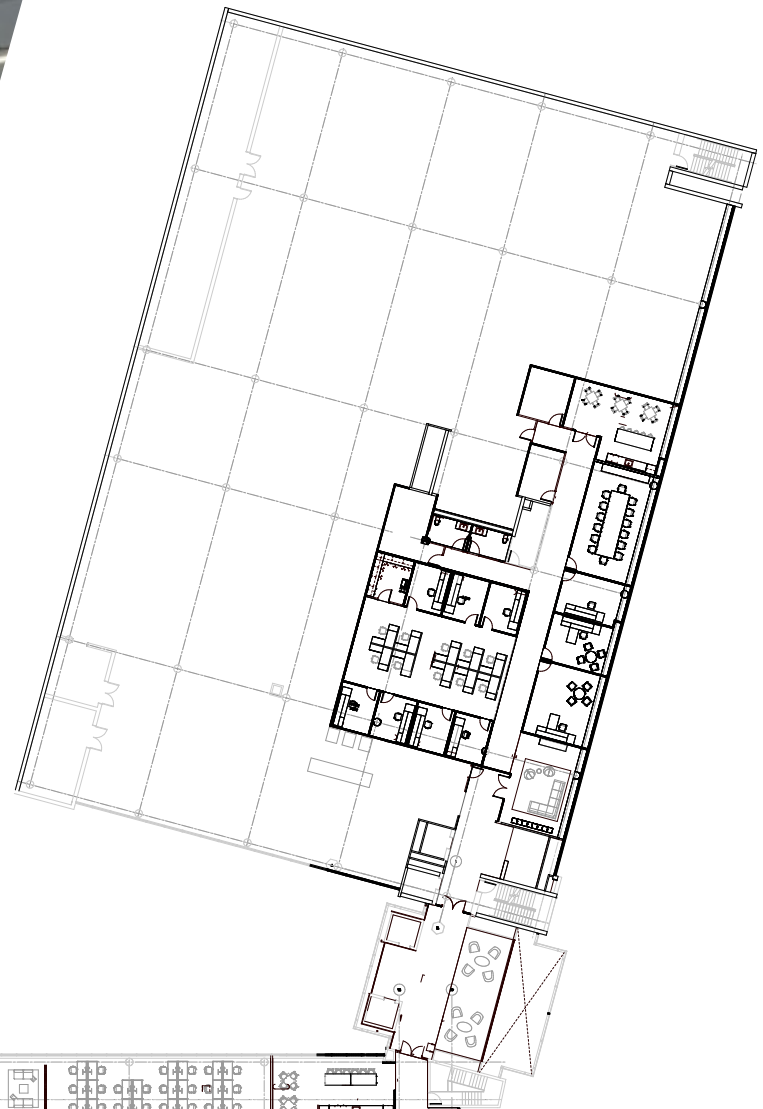


PARKING

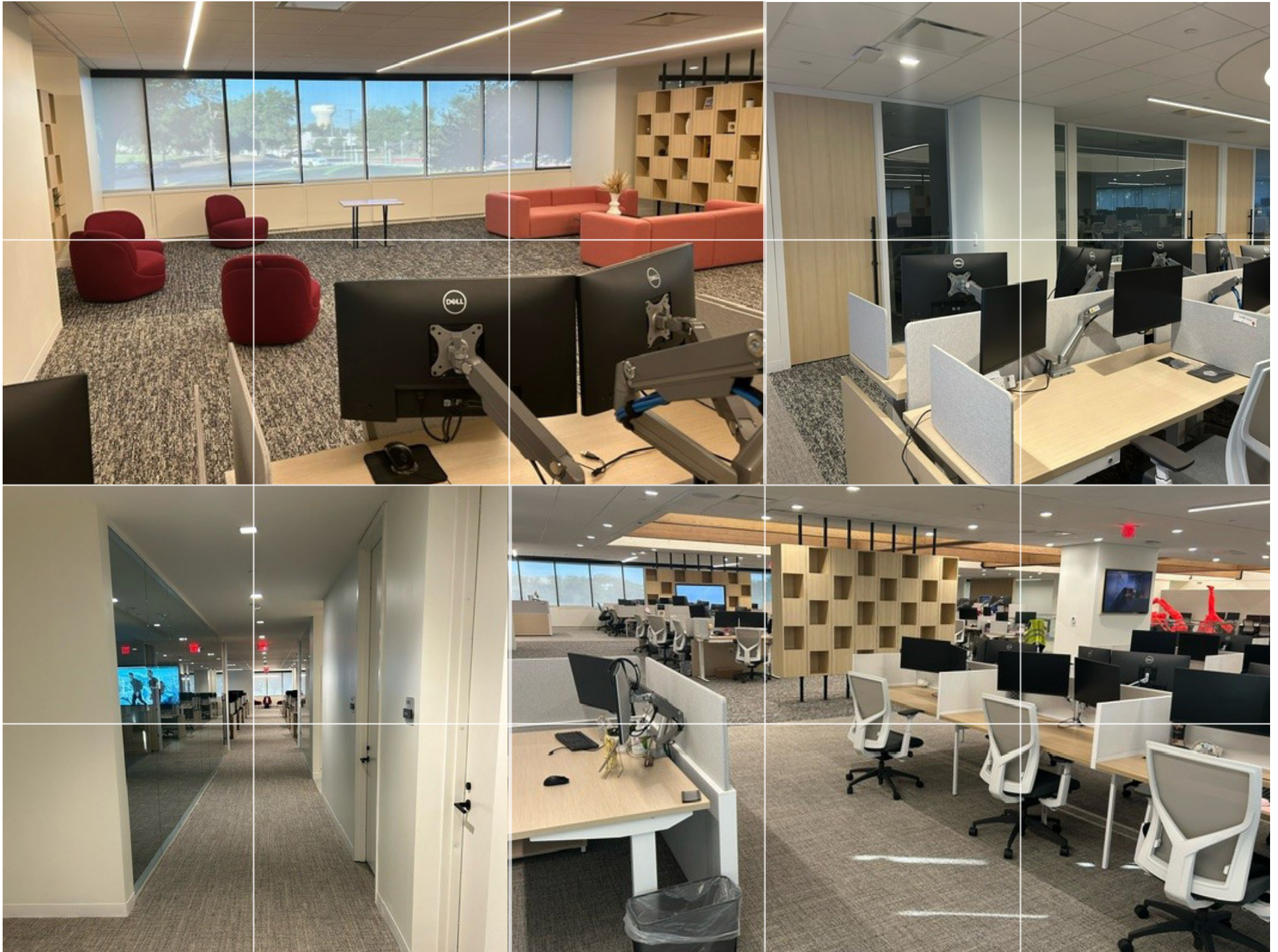
5.0/1,000 SF



FLOOR 2
20,078 SF



FLOOR 3
13,530 SF





SPACE IMAGES



BUILDING

IMAGES



Outdoor Tenant
Lounge

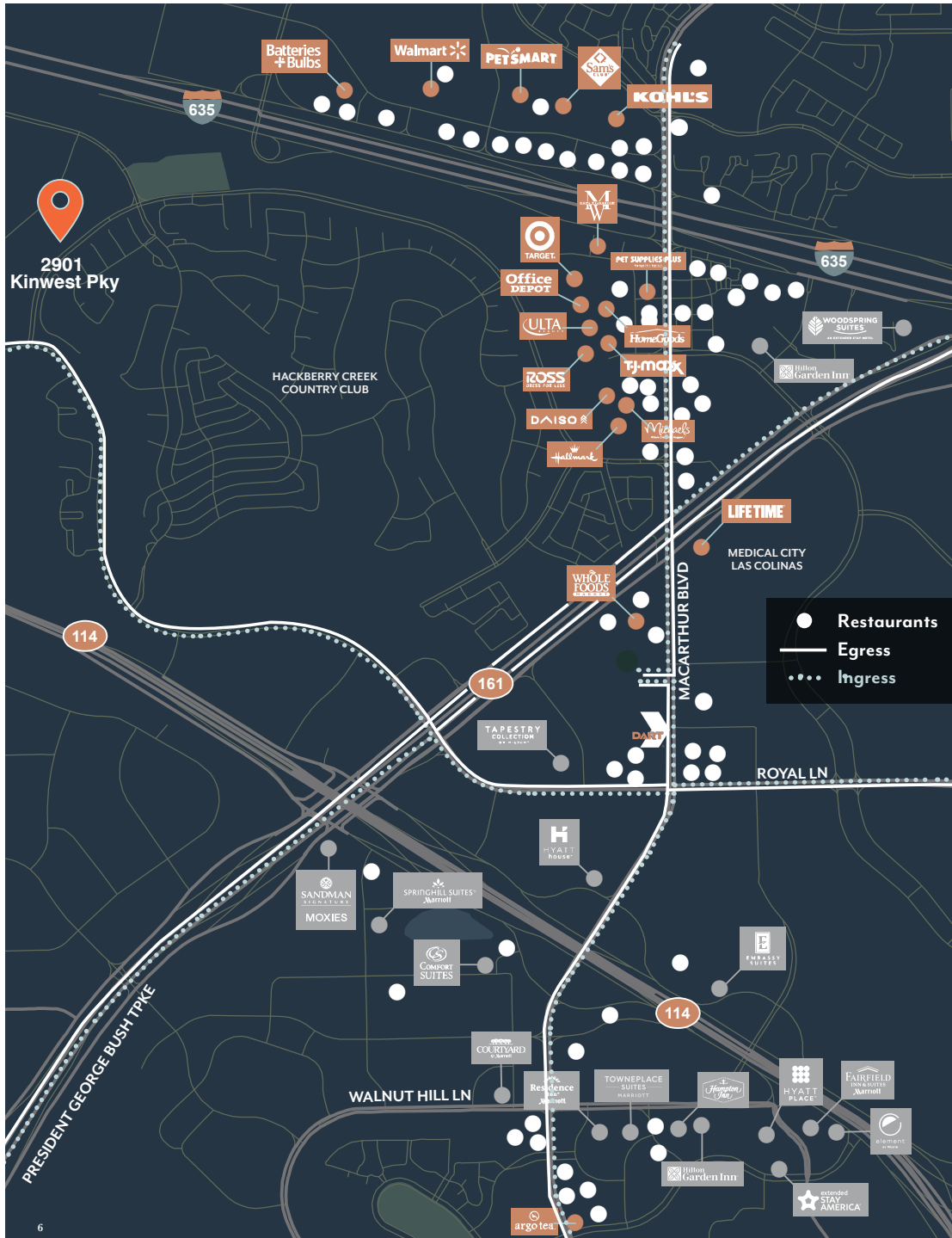


Full Service
Café



Conference
Room





2901

KINWEST PKY

2901 Kinwest Pky Irving, TX 75063

BROKER CONTACT

Conor McCarthy
+1 214 438 6392
conor.mccarthy@jll.com

MaryMicahel McCartin
+ 1 214 458 5535
marymichael.mccartin@jll.com

Although information has been obtained from sources deemed reliable, JLL does not make any guarantees, warranties or representations, express or implied, as to the completeness or accuracy as to the information contained herein. Any projections, opinions, assumptions or estimates used are for example only. There may be differences between projected and actual results, and those differences may be material. JLL does not accept any liability for any loss or damage suffered by any party resulting from reliance on this information. If the recipient of this information has signed a confidentiality agreement with JLL regarding this matter, this information is subject to the terms of that agreement.
©2024 Jones Lang LaSalle Brokerage, Inc. All rights reserved.

