



## 101.57+/- Acre Site Off Highway 365

### OFFERING SUMMARY

Price / Acre:	\$85,000
Zoning:	Proposed Industrial
Traffic Count:	37,100

### FOR INFORMATION

LEE HEMMER, CCIM, SIOR  
Principal / Managing Broker

o | 770-988-6383  
lee@candlerre.com

135 Maple Street, NW  
Gainesville, GA 30501

[www.candlerre.com](http://www.candlerre.com)







## PROPERTY HIGHLIGHTS

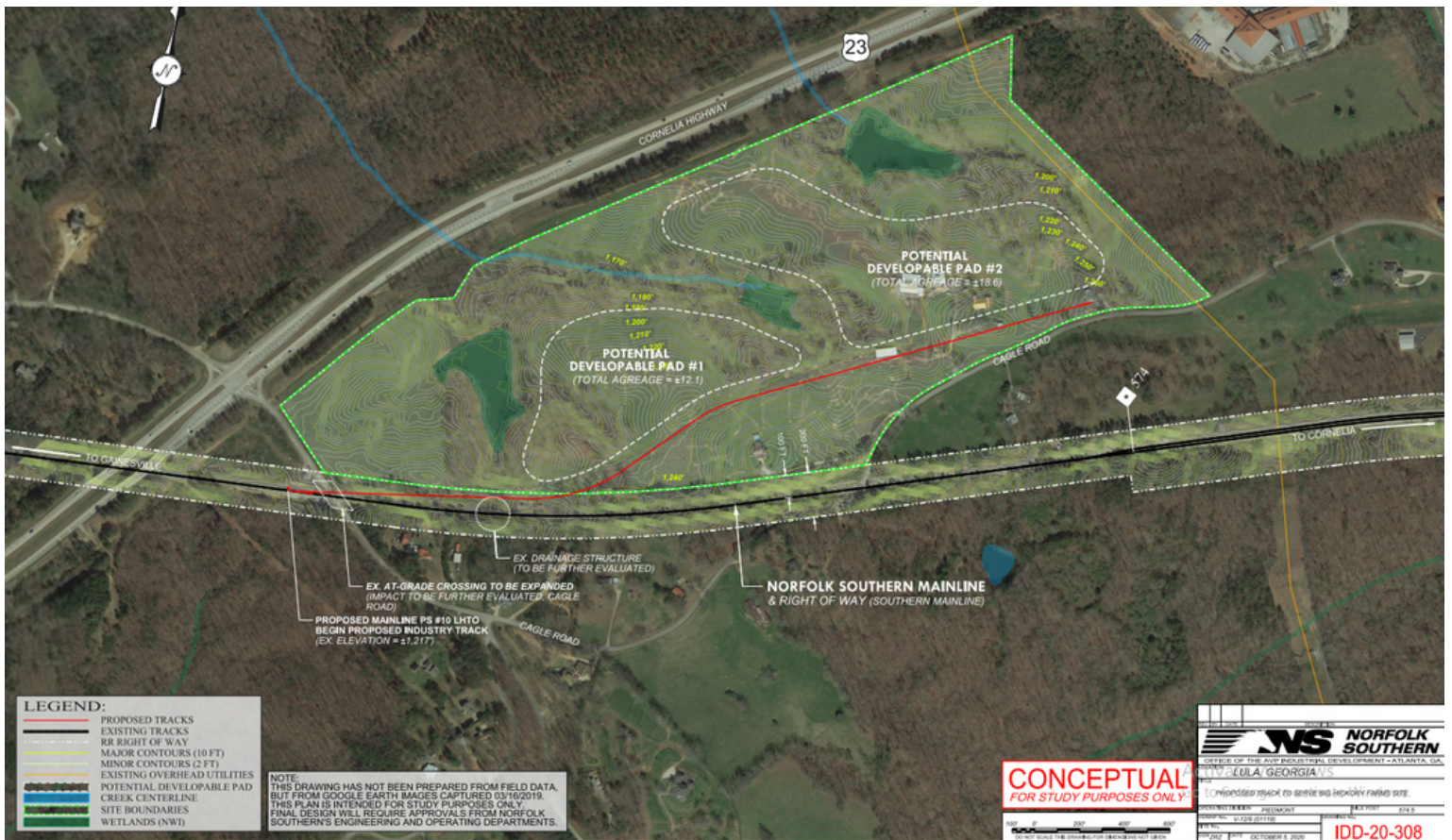
- 101.57 +/- Acres
- All utilities accessible
- High exposure along GA Hwy 365 - 3650 FT of frontage
- Zoning: currently AR-IV/Proposed Industrial
- 5 miles from planned Northeast Georgia Inland Port, 9.6 miles from Northeast Georgia Medical Center, 13 miles from Lee Gilmer Memorial Gainesville Airport, and 75 miles from Hartsfield-Jackson International Airport.







**RAIL LINE PLAN**



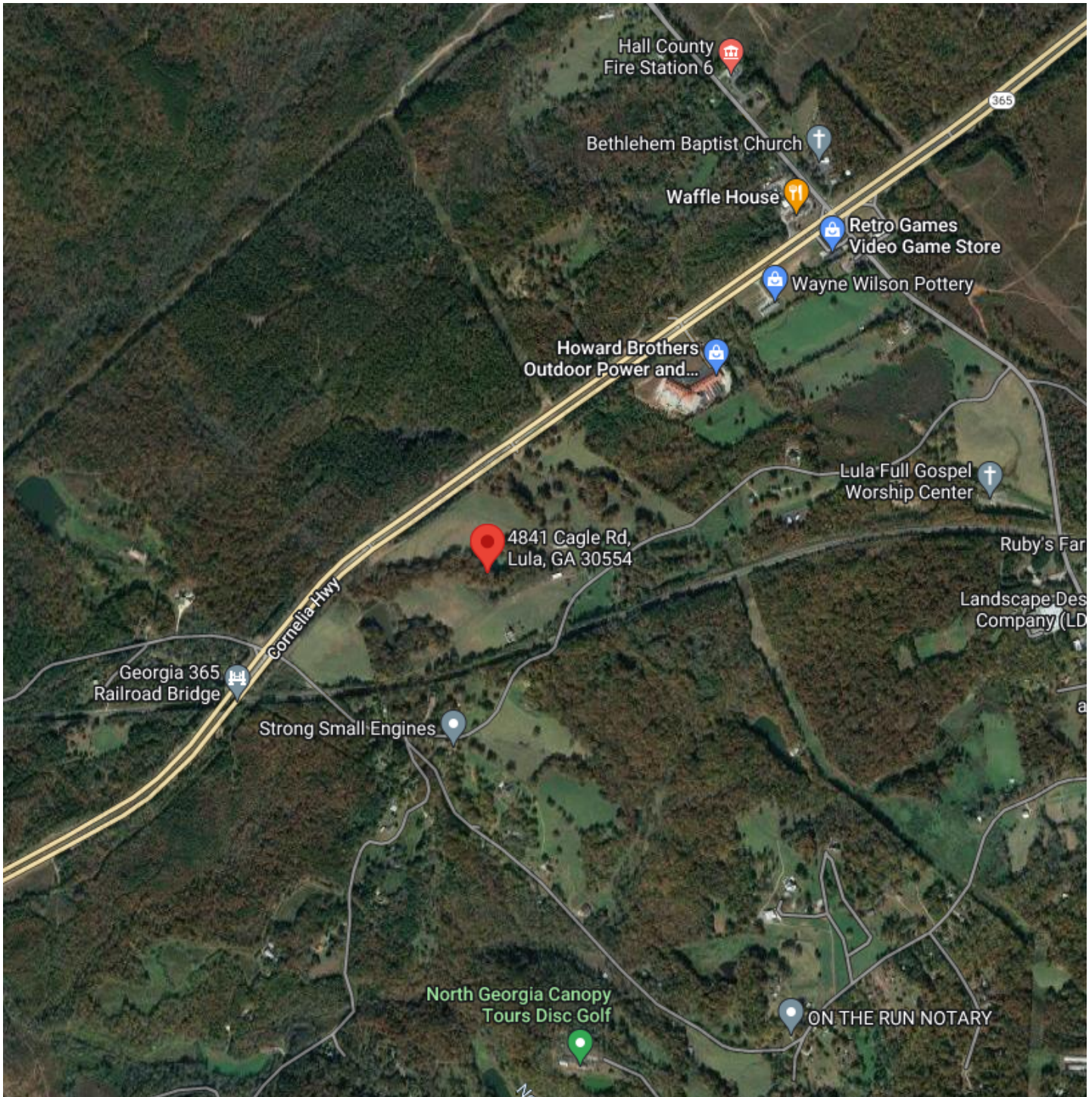
















# CANDLER

REAL ESTATE

FOR MORE INFORMATION, PLEASE CONTACT:

**LEE HEMMER, CCIM, SIOR**

*Principal/Managing Broker*

o | 770-988-6383  
lee@candlerre.com



**Candler Real Estate | 135 Maple Street, Gainesville, GA 30501 | 770-988-6383 | [www.candlerre.com](http://www.candlerre.com)**

© 2022 Candler Real Estate. Information contained herein was obtained from sources deemed reliable and, while thought to be correct, have not been verified. Candler Real Estate does not guarantee the accuracy or completeness of the information presented, nor assumes any responsibility or liability for any errors or omissions therein.