

# RETAIL SHOP SPACE FOR LEASE



**Address:** NW Burnside & Eastman Pkwy

**Available Space:** 16,707 SF

**Traffic Counts:** E. Burnside - 25,699 CPD  
Eastman Pkwy. - 31,701 CPD

**Features:**

- Under New Ownership
- Renovated Facade
- High visibility and multiple access points
- Abundant Parking—426 spaces
- Excellent Signage
- New landscaping, lighting, common area improvements and signage



<u>Demographics (2019 Est.)</u>	<u>1 Mile</u>	<u>3 Mile</u>	<u>5 Mile</u>
Population	17,876	136,641	222,771
Daytime Employees	9,955	39,696	61,019
Avg. Household Income	\$60,034	\$63,444	\$58,827

## GRESHAM SQUARE

GRESHAM, OREGON

David Demers  
503-245-1400 Ext 521  
david@hsm Pacific.com

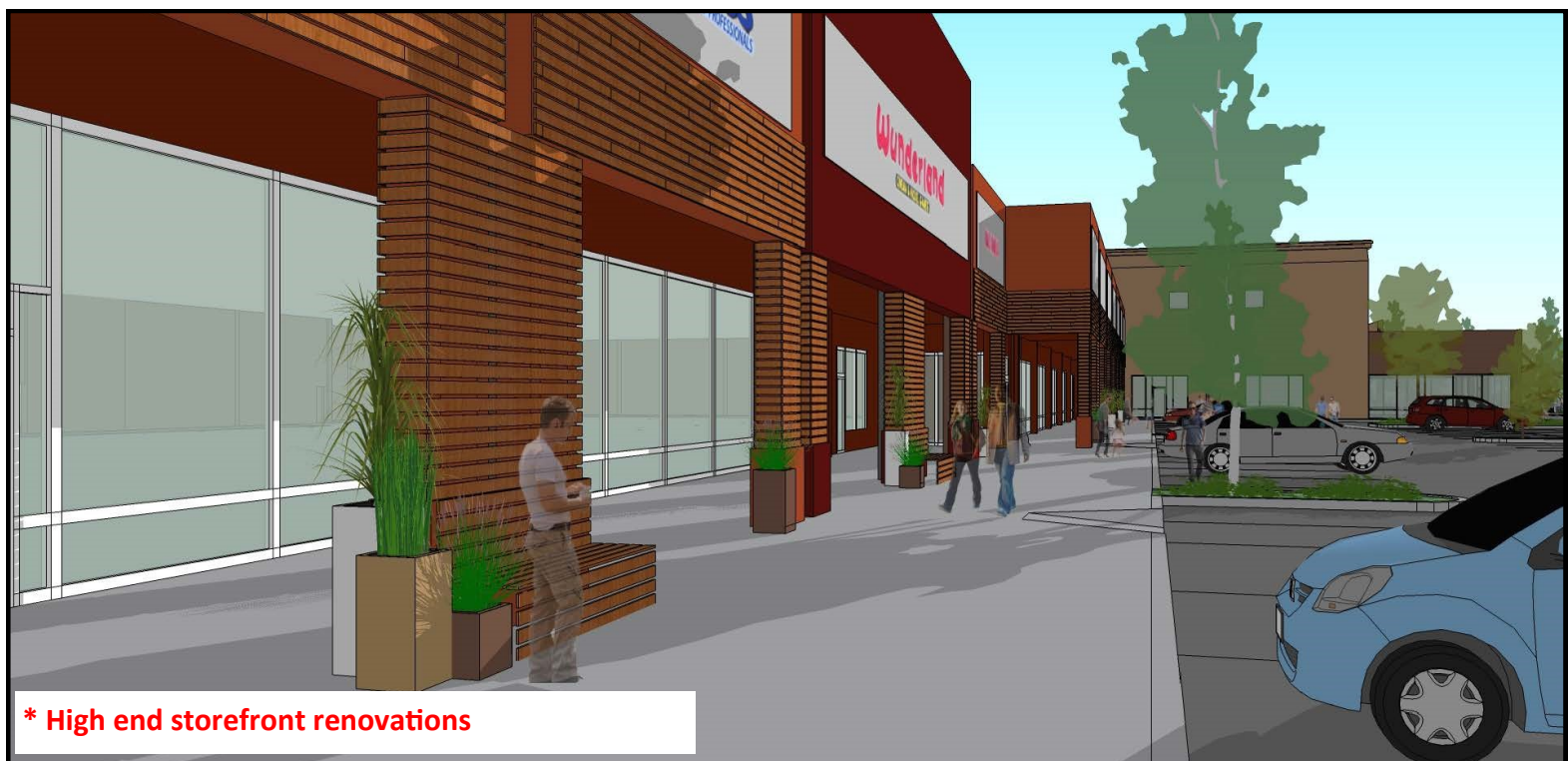
Brock Switzer  
503-245-1400 Ext 518  
brock@hsm Pacific.com

Kara Phelps  
503-245-1400 Ext 515  
kara@hsm Pacific.com



HSM Pacific Realty, Inc.  
0612 SW Idaho St, Suite 2  
Portland, OR 97239  
[www.hsm Pacific.com](http://www.hsm Pacific.com)

# PROSPECTIVE RENOVATION PLANS



## GRESHAM SQUARE

GRESHAM, OREGON

David Demers  
503-245-1400 Ext 521  
david@hsm Pacific.com

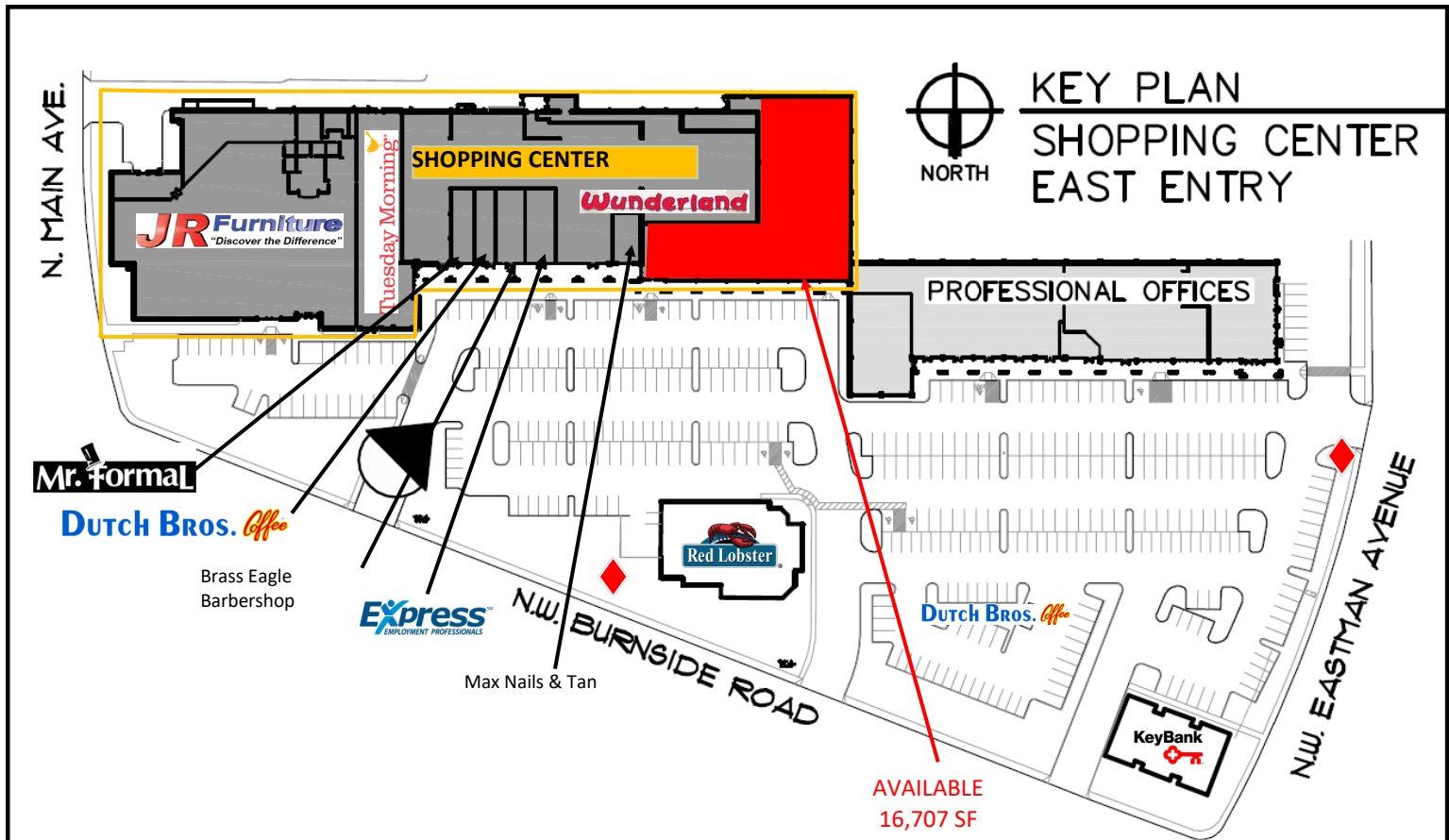
Brock Switzer  
503-245-1400 Ext 518  
brock@hsm Pacific.com

Kara Phelps  
503-245-1400 Ext 515  
kara@hsm Pacific.com



HSM Pacific Realty, Inc.  
0612 SW Idaho St, Suite 2  
Portland, OR 97239  
[www.hsm Pacific.com](http://www.hsm Pacific.com)

# RETAIL SHOP SPACE FOR LEASE



**PYLON SIGNAGE**



## GRESHAM SQUARE

GRESHAM, OREGON

David Demers  
503-245-1400 Ext 521  
david@hsmPacific.com

Brock Switzer  
503-245-1400 Ext 518  
brock@hsmPacific.com

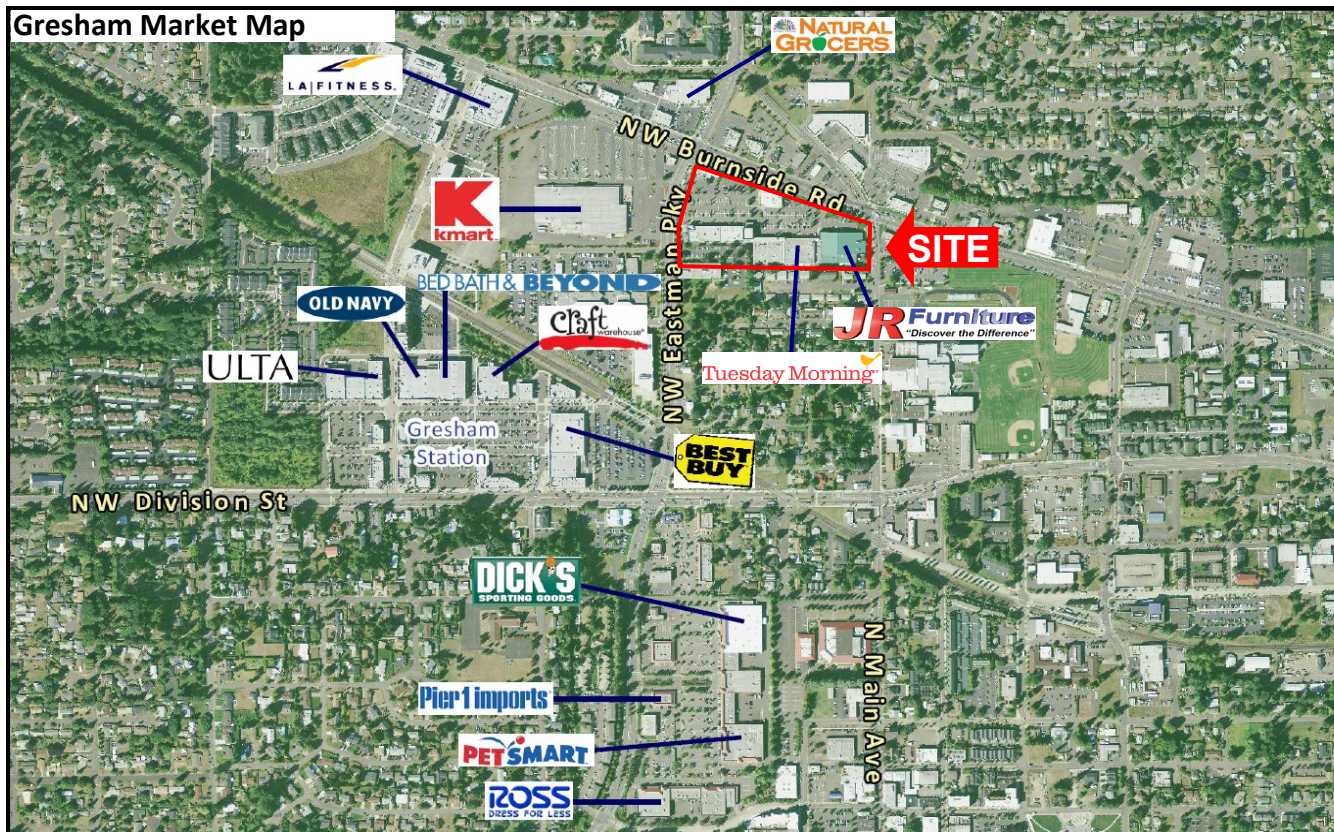
Kara Phelps  
503-245-1400 Ext 515  
kara@hsmPacific.com



HSM Pacific Realty, Inc.  
0612 SW Idaho St, Suite 2  
Portland, OR 97239  
[www.hsmPacific.com](http://www.hsmPacific.com)



# AERIALS



## GRESHAM SQUARE

GRESHAM, OREGON

David Demers  
503-245-1400 Ext 521  
david@hsm Pacific.com

Brock Switzer  
503-245-1400 Ext 518  
brock@hsm Pacific.com

Kara Phelps  
503-245-1400 Ext 515  
kara@hsm Pacific.com



HSM Pacific Realty, Inc.  
0612 SW Idaho St, Suite 2  
Portland, OR 97239  
www.hsm Pacific.com