

1100G

TOP FLOOR AVAILABLE

9,759 SF WITH FOUR SIDES OF GLASS



**MOVE-IN READY
SPEC SUITES AVAILABLE
& MORE ON THE WAY!**

The logo for 1100G, with '1100' in white and 'G' in orange, set against a blue and white geometric background.

1100G

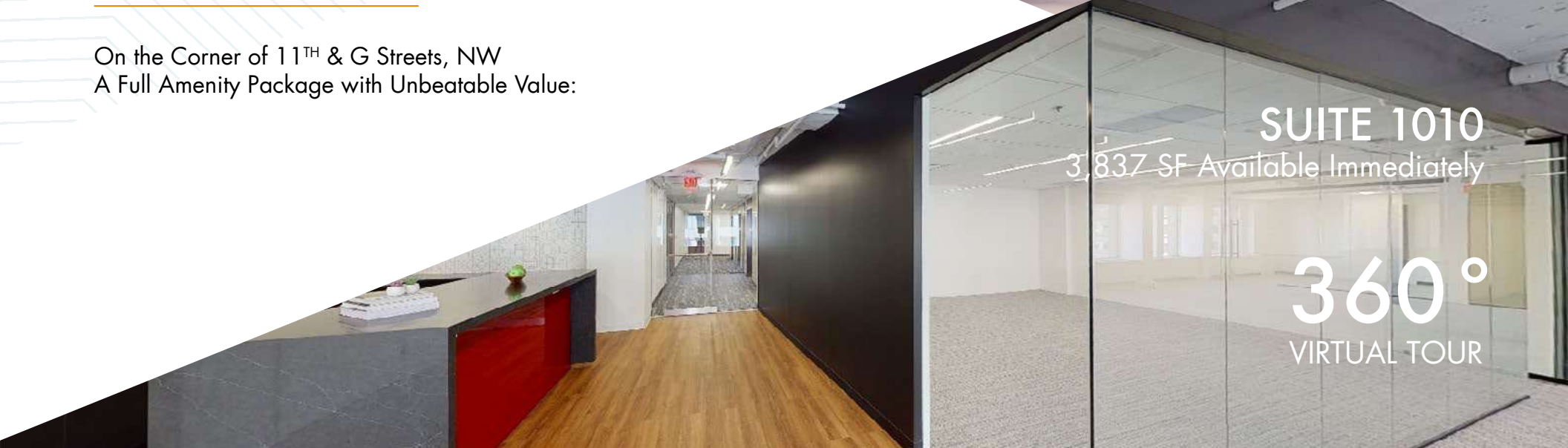
>> TAKE THE VIRTUAL TOUR
& SEE FOR YOURSELF

**TOP OF THE LINE
FINISHES** >>

A photograph of a modern office interior. In the foreground, a woman in a blue and white checkered shirt stands and talks to two seated colleagues. They are at desks with laptops and orange chairs. The background shows more office space with large windows.

Welcome to your new office.

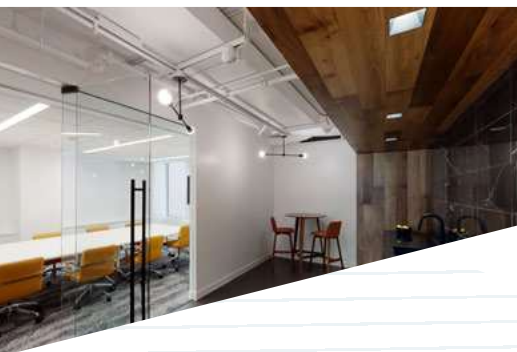
On the Corner of 11TH & G Streets, NW
A Full Amenity Package with Unbeatable Value:

A composite image showing two parts of an office. The bottom left shows a hallway with a grey carpet, wooden floors, and a red reception desk. The bottom right shows a glass-walled office suite.

SUITE 1010

3,837 SF Available Immediately

360°
VIRTUAL TOUR



360°
VIRTUAL TOUR

Even More Elbow Room.

The sixth floor conference facility, lounge & coffee bar allows tenants to host large events directly at the building. These facilities also provide tenants the ability to hold impromptu meetings, huddles or team events. Offering multiple soft seating areas, a 12-person executive board room and 60-person conference center, the various offerings at 1100 G provide real connections & higher employee satisfaction.

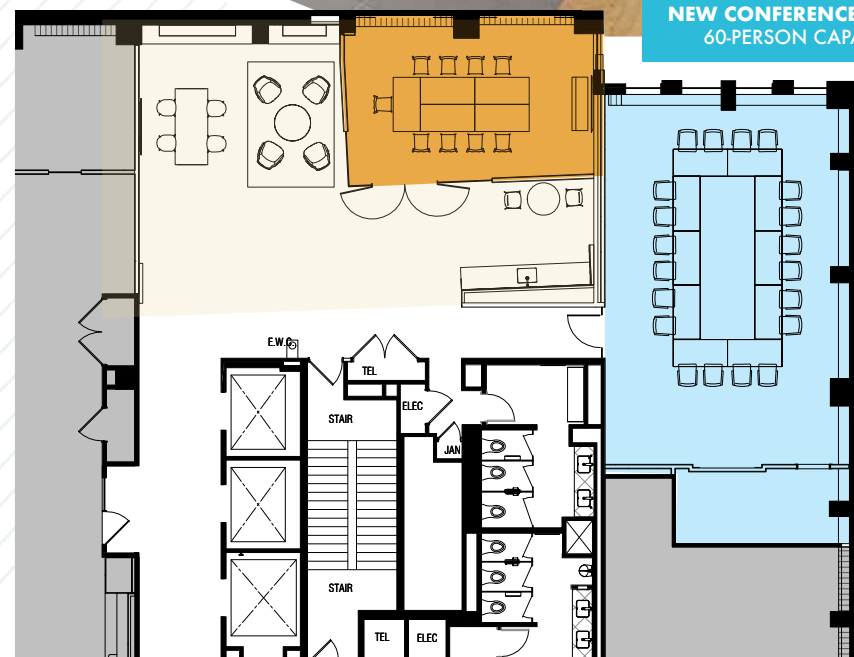
MULTI-FACETED CONFERENCE CENTER & TENANT LOUNGE

Recently Delivered

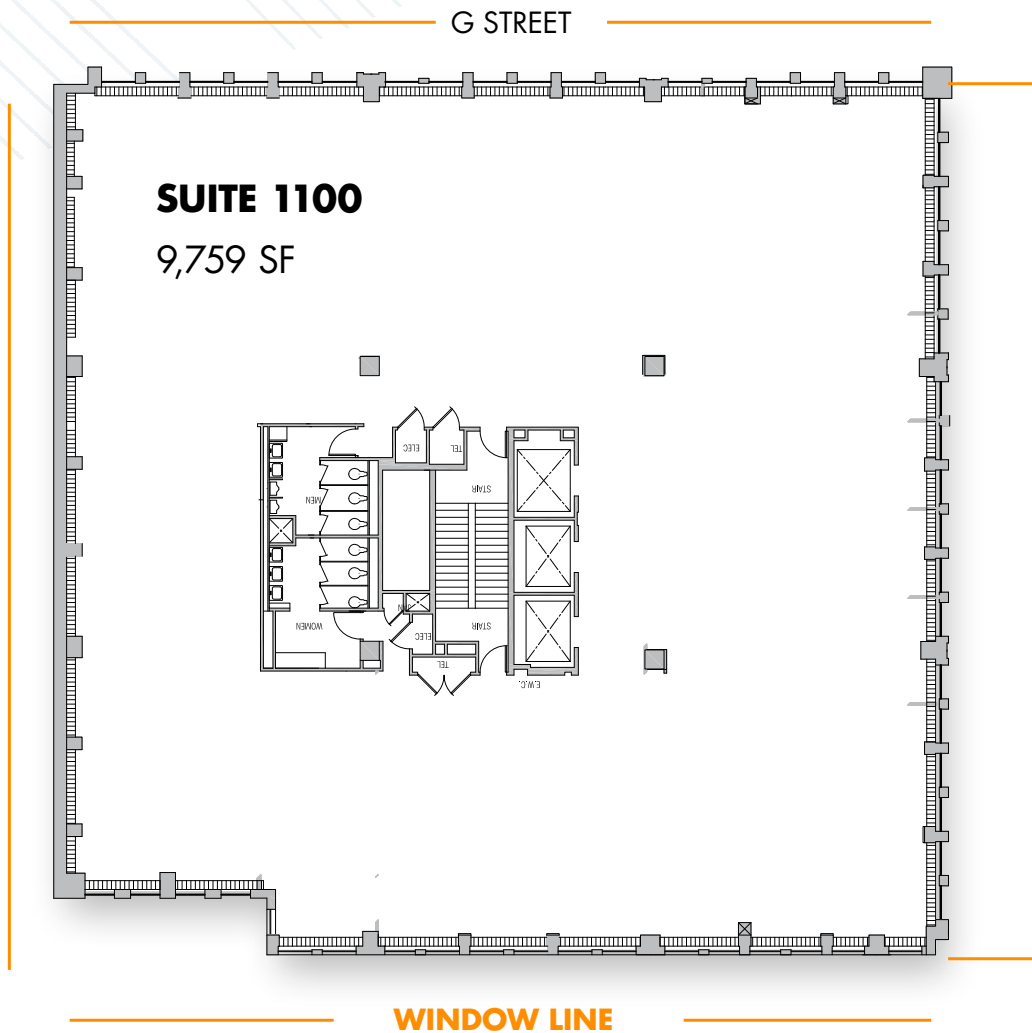
TENANT LOUNGE &
COFFEE BAR

EXECUTIVE BOARD ROOM
12-PERSON

NEW CONFERENCE CENTER
60-PERSON CAPACITY

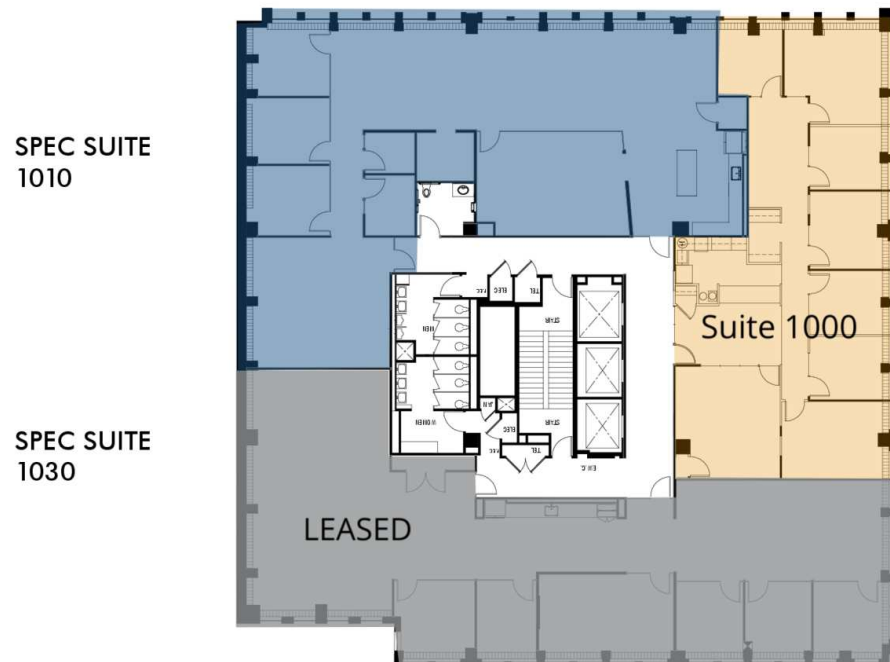


11TH FLOOR | 9,759 SF



Top Floor. With a View.

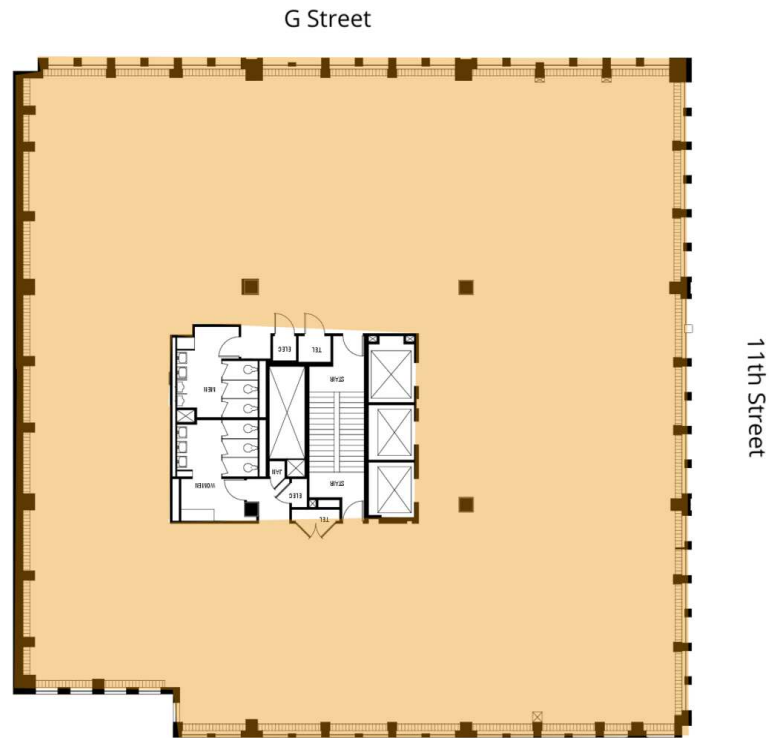
Full Floor Available in Shell Condition with
Terrific Window Lines.



Suite	Size	Description	Virtual Tour
■ Suite 1000	2,599 SF	Highly efficient suite on the front corner of the building with prominent elevator exposure. Can be combined with Suite #1010. Available Immediately.	View Here
■ Spec Suite 1010	3,837 SF	Brand-new spec suite with prime window line overlooking G Street and direct elevator exposure. Mostly open plan with featuring three interior offices, two huddle/zoom rooms, large conference room, pantry, and two bullpen areas for open work stations.	View Here

Merrill Turnbull 202.513.6713 mturnbull@lpc.com	Adam Biberaj 202.513.6736 abiberaj@lpc.com	Tim Whitebread 202.513.6712 twhitebread@lpc.com
--	---	--

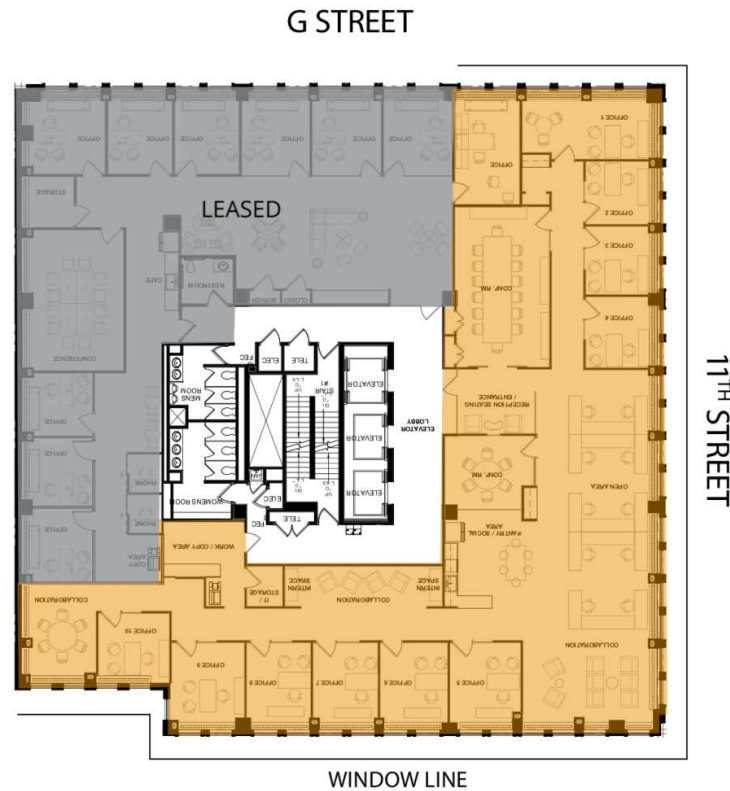
Lincoln



	Suite	Size	Description
■	Suite 900	10,197 SF	Full Floor

Merrill Turnbull 202.513.6713 mturnbull@lpc.com	Adam Biberaj 202.513.6736 abiberaj@lpc.com	Tim Whitebread 202.513.6712 twhitebread@lpc.com
--	---	--

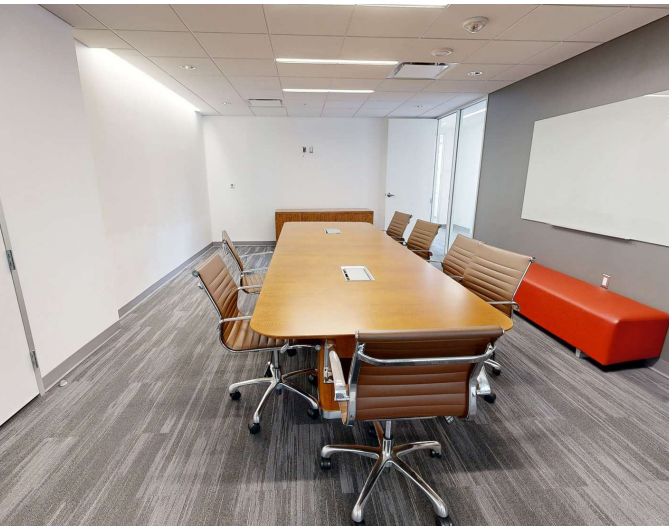
Lincoln



Suite	Size	Description	Virtual Tour
■ Suite 805	5,912 SF	Fully furnished space on the front of the building with three sides of glass. Great space ready for immediate occupancy!	View Here

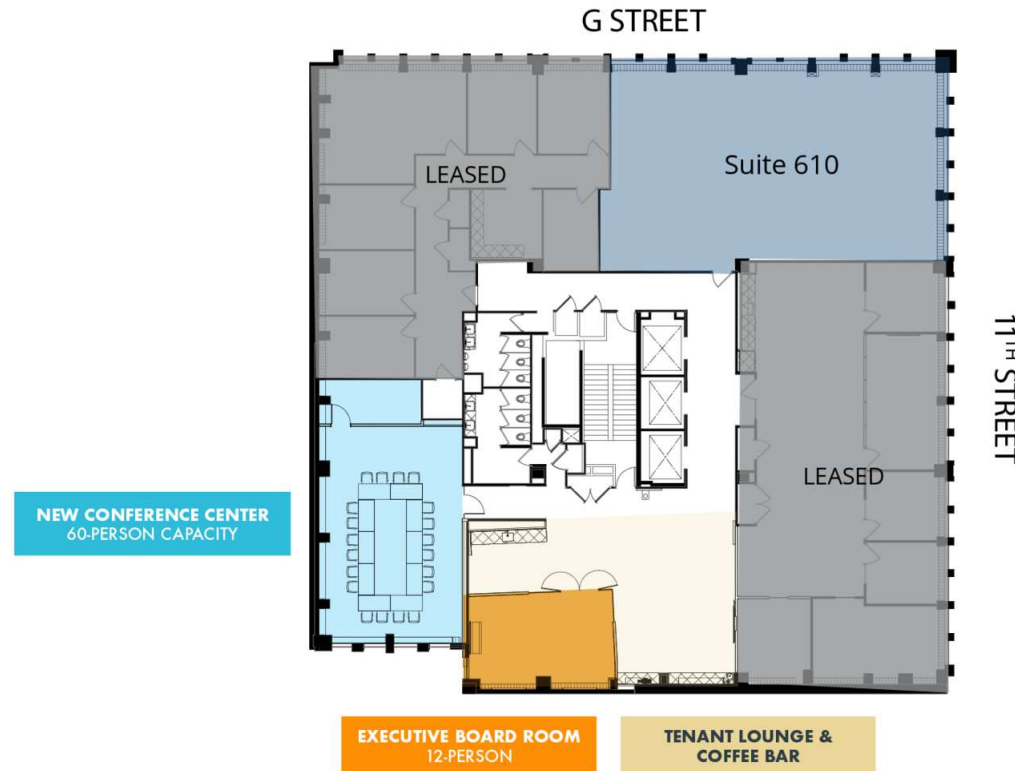
Merrill Turnbull	Adam Biberaj	Tim Whitebread
202.513.6713	202.513.6736	202.513.6712
mturnbull@lpc.com	abiberaj@lpc.com	twhitebread@lpc.com

Lincoln



Merrill Turnbull	Adam Biberaj	Tim Whitebread
202.513.6713	202.513.6736	202.513.6712
mturnbull@lpc.com	abiberaj@lpc.com	twhitebread@lpc.com

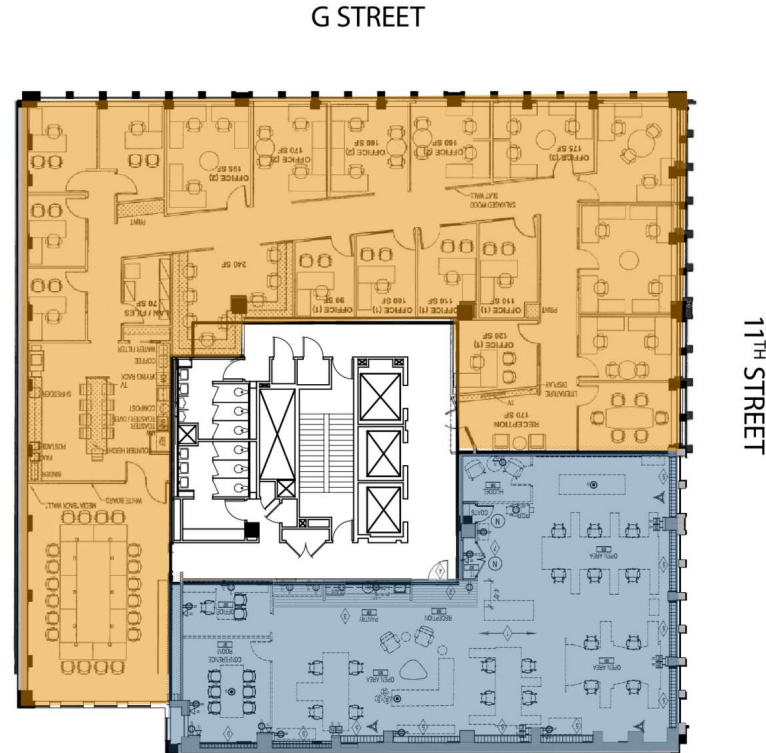
Lincoln



Suite	Size	Description
■ Suite 610	2,020 SF	Small suite available on the front corner of the building on the same floor as the tenant lounge + conference facility. Turnkey opportunity for late-2026 occupancy. Direct elevator exposure!

Merrill Turnbull	Adam Biberaj	Tim Whitebread
202.513.6713	202.513.6736	202.513.6712
mturnbull@lpc.com	abiberaj@lpc.com	twhitebread@lpc.com

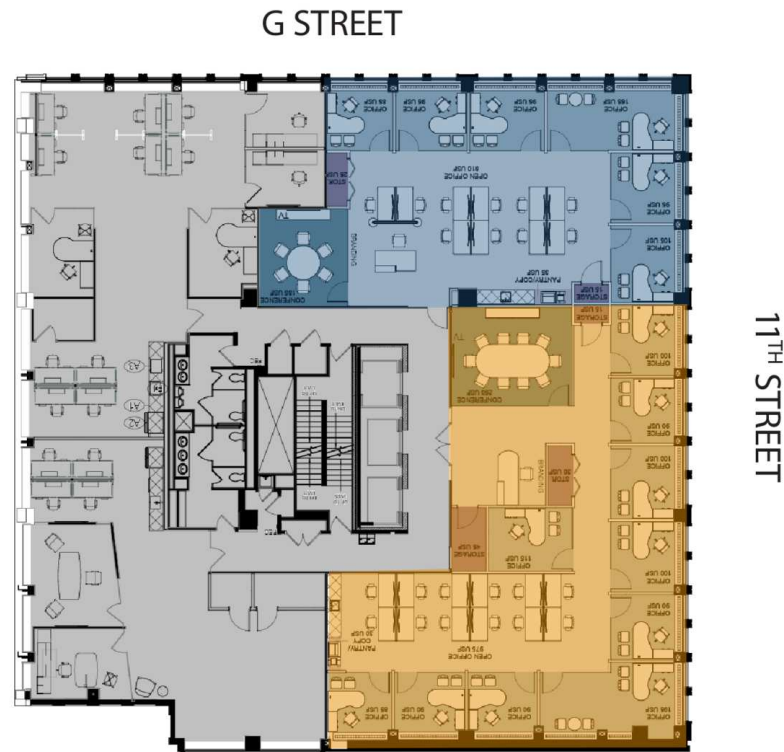
Lincoln



Suite	Size	Description	Virtual Tour
■ Suite 500	6,904 SF	Built-out space overlooking 11th and G Streets with direct elevator exposure. Office-intensive build out with large conference room in-place.	View Here
■ Suite 535	3,239 SF	Open space plan with direct elevator exposure on the front of the building! Existing build-out has very high-end finishes with an eight-person conference room, two private offices and pantry. Ready for immediate occupancy!	View Here

Merrill Turnbull	Adam Biberaj	Tim Whitebread
202.513.6713	202.513.6736	202.513.6712
mturnbull@lpc.com	abiberaj@lpc.com	twhitebread@lpc.com

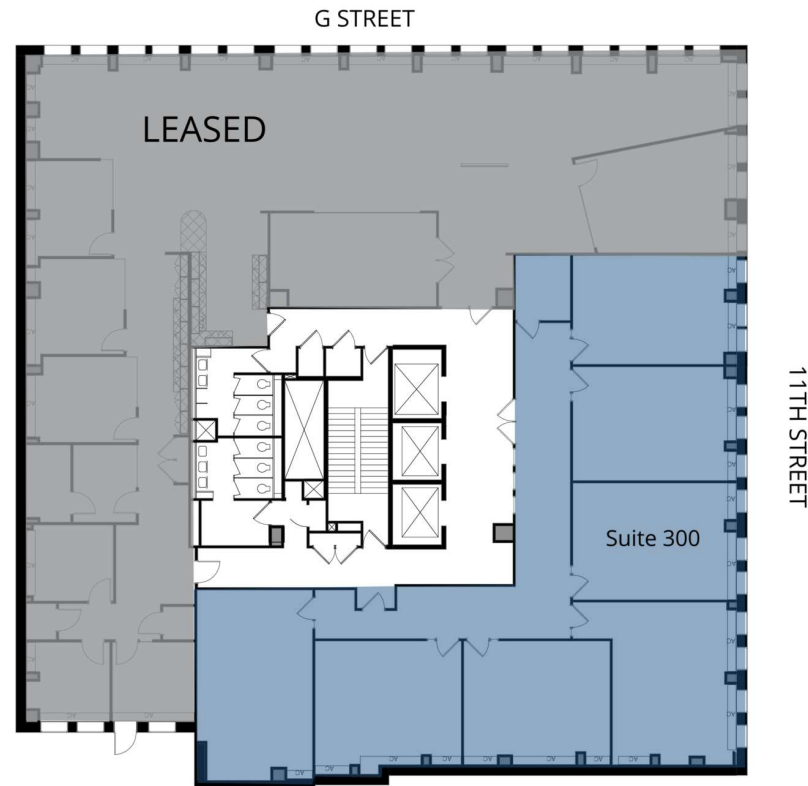
Lincoln



Suite	Size	Lease Rate	Description
■ Suite 400	3,464 SF	\$51.50 FS	Move-in ready spec suite under construction now! Space offers direct elevator exposure on the front of the building overlooking 11th Street. Office-intensive design from OTJ Architects.
■ Suite 410	2,462 SF	\$51.50 FS	Move-in ready spec suite under construction now! Space offers direct elevator exposure on the front corner of the building overlooking G and 11th Streets. Office-intensive design from OTJ Architects.

Merrill Turnbull	Adam Biberaj	Tim Whitebread
202.513.6713	202.513.6736	202.513.6712
mturnbull@lpc.com	abiberaj@lpc.com	twhitebread@lpc.com

Lincoln



Suite	Size	Description
■ Suite 300	4,190 SF	Plug-and-play opportunity for an educational user. Space overlooks 11th Street with direct elevator exposure. Seven classrooms existing with supplemental HVAC in-place.

Merrill Turnbull	Adam Biberaj	Tim Whitebread
202.513.6713	202.513.6736	202.513.6712
mturnbull@lpc.com	abiberaj@lpc.com	twhitebread@lpc.com

Lincoln

1100G



OFFICE LEASING 202.513.6700

Merrill Turnbull	mturnbull@lpc.com	202.513.6713
Adam Biberaj	abiberaj@lpc.com	202.513.6736
Tim Whitebread	twhitebread@lpc.com	202.513.6712

MCRE
PARTNERS

Lincoln