

1401 W. Fairway Drive

Warehouse and Distribution Space

Santa Maria, CA

Property Features

- Class A High-Bay Distribution Building
- Rare Free-Standing Facility
- Ample Loading
- Low Operating Expenses
- Adjacent To Santa Maria Airport
- Term: 5-10 Years

Property Specifications

- Power: 1600 amps, 277/480 volts, 3 phase 4-wire
- Doors: 7 Dock High (8'x10'), 1 Dock High (12'x14')
7 Ground Level (12'x14'), 1 Ground Level (14'x14')
- Clear Height: 30'
- Zoning: PD-M1 - Light Industrial
- Parking: 110 Spaces
- Sprinklers: ESFR

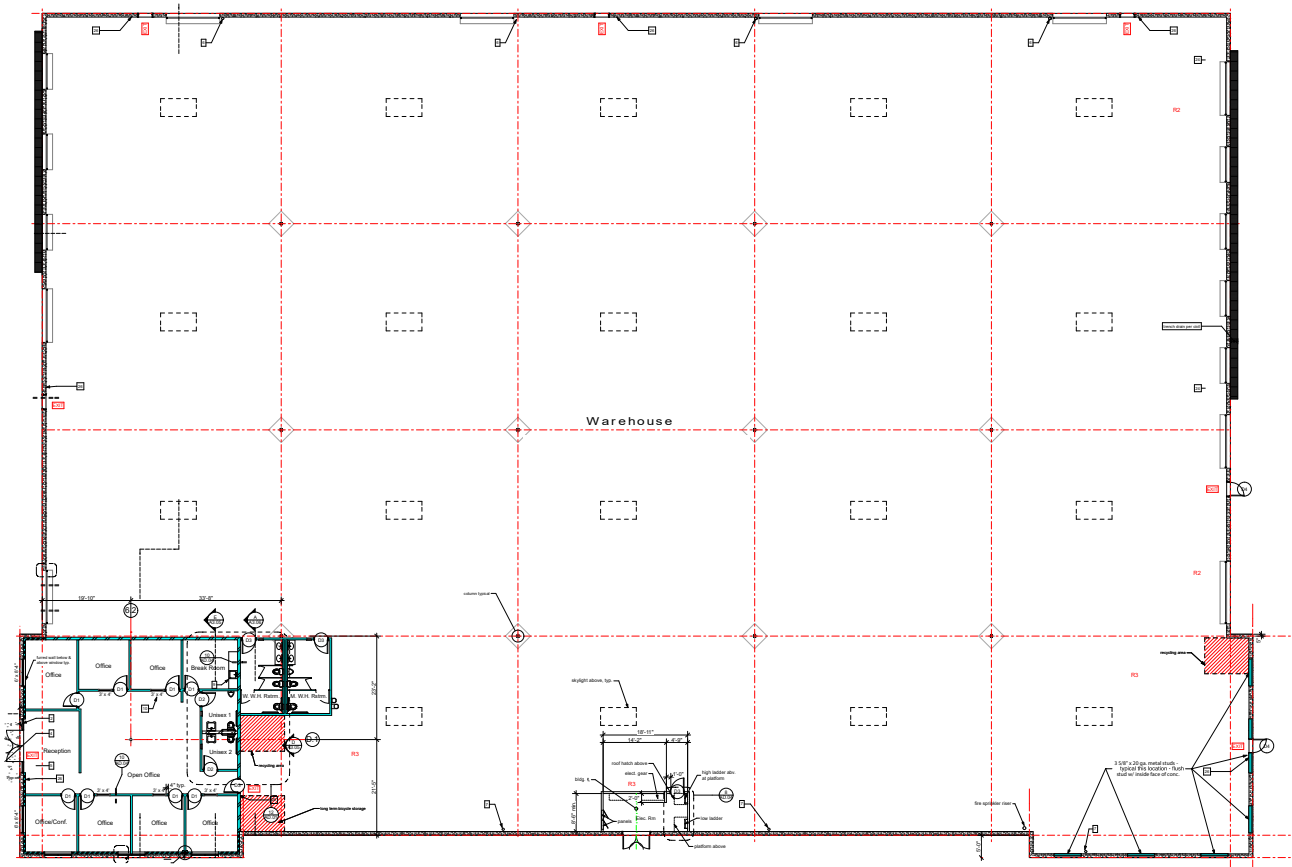
Sale Price: \$13,721,125

Lease Rate: \$0.90/SF NNN



Available

Total SF	Office SF	Warehouse SF	Sale Price	Lease Rate (\$ 0.90/SF)	Estimated NNN	Available
49,895 SF	2,427/9 SF	47,468 SF	\$13,721,125	\$44,905.50	\$0.16/SF/Mo	Now



Contact Us

Paul Farry
Senior Vice President
+1 805 288 4670
paul.farry@cbre.com
Lic. 00941298

John Cardona
Vice President
+1 805 288 4674
john.cardona@cbre.com
Lic. 02004799

Dexter Wilkerson
Sales Assistant
+1 805 288 4668
dexter.wilkerson@cbre.com
Lic. 02160842

© 2024 CBRE, Inc. All rights reserved. This information has been obtained from sources believed reliable but has not been verified for accuracy or completeness. CBRE, Inc. makes no guarantee, representation or warranty and accepts no responsibility or liability as to the accuracy, completeness, or reliability of the information contained herein. You should conduct a careful, independent investigation of the property and verify all information. Any reliance on this information is solely at your own risk. CBRE and the CBRE logo are service marks of CBRE, Inc. All other marks displayed on this document are the property of their respective owners, and the use of such marks does not imply any affiliation with or endorsement of CBRE. Photos herein are the property of their respective owners. Use of these images without the express written consent of the owner is prohibited.