

LANE4

9,091 SF
AVAILABLE



1729 MCGEE FOR SALE OR LEASE

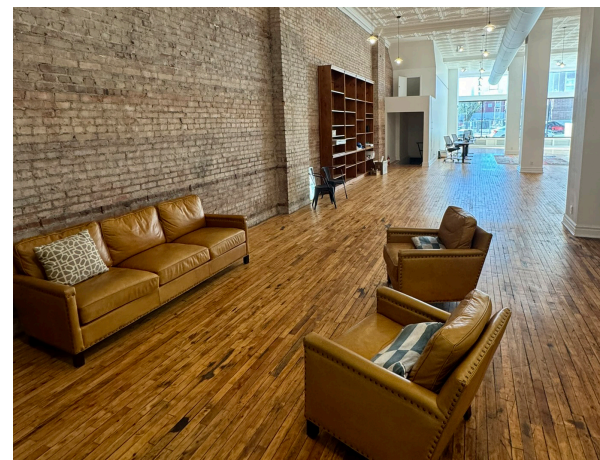
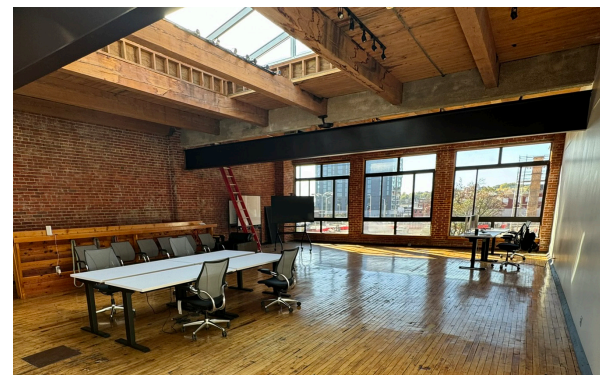
KANSAS CITY, MO

ADAM ABRAMS, CCIM
816.268.7565 / aabrams@lane4group.com

PROPERTY HIGHLIGHTS

- 9,091 SF building for sale or lease in the Crossroads
- RARE 1920's construction recently restored
- 1st floor 16' ceilings and hardwood floors. 2nd floor 14' ceilings, hardwood floors, wood truss roof
- Full conditioned lower level with a restroom featuring 9' ceilings, presently used as storage and a gym *(Not included in SF)*
- Drive-in door in back
- Fully functioning freight elevator

DEMOGRAPHICS	1 MI	3 MI	5 MI
Population	16,957	103,375	236,905
Avg. HH Income	\$102,653	\$77,346	\$79,508
# of Businesses	3,110	7,909	13,649
# of Employees	104,138	183,337	288,438



CROSSROADS ART DISTRICT



AERIAL OVERVIEW

