




For Sublease

Oakbrook Center- East Tower

11770 US Highway 1

Palm Beach Gardens, FL 33408

 **JLL** SEE A BRIGHTER WAY

For Sublease



Suite Partial 3rd Floor & 603

Size (Divisible) Partial 3rd Floor- 10,939 RSF
Suite 603- 3,773 RSF

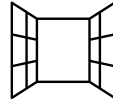
Asking Rate \$47.00 /SF Gross

Available Now

Expiration 2/28/30



Lush courtyard with serene fountains



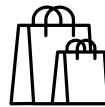
Floor to ceiling windows



Flexible workspace



Intracoastal views from the 6th floor



Near luxury communities, retail, and entertainment



Partial 3rd Floor Photos

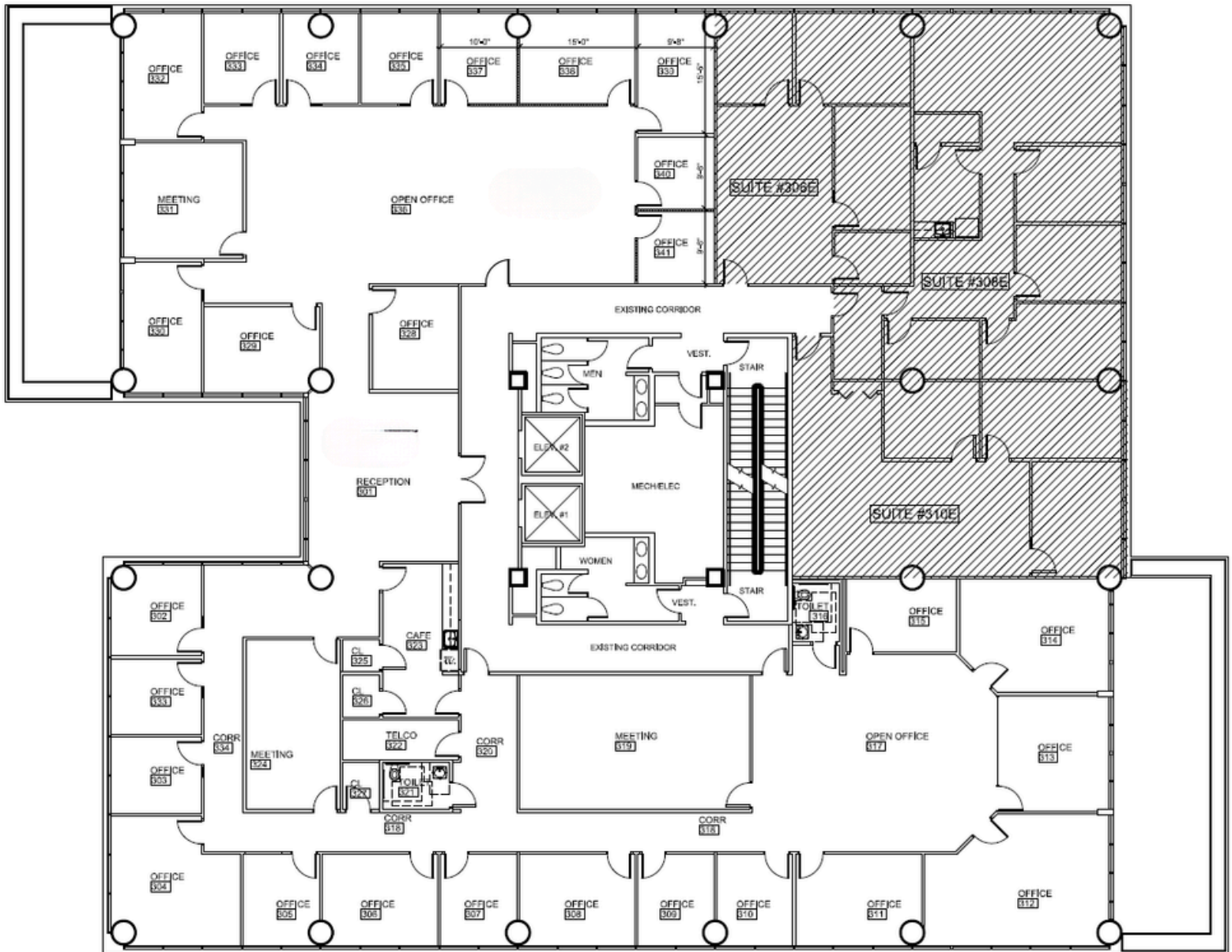


Suite 603

Photos



3rd Floor Plan

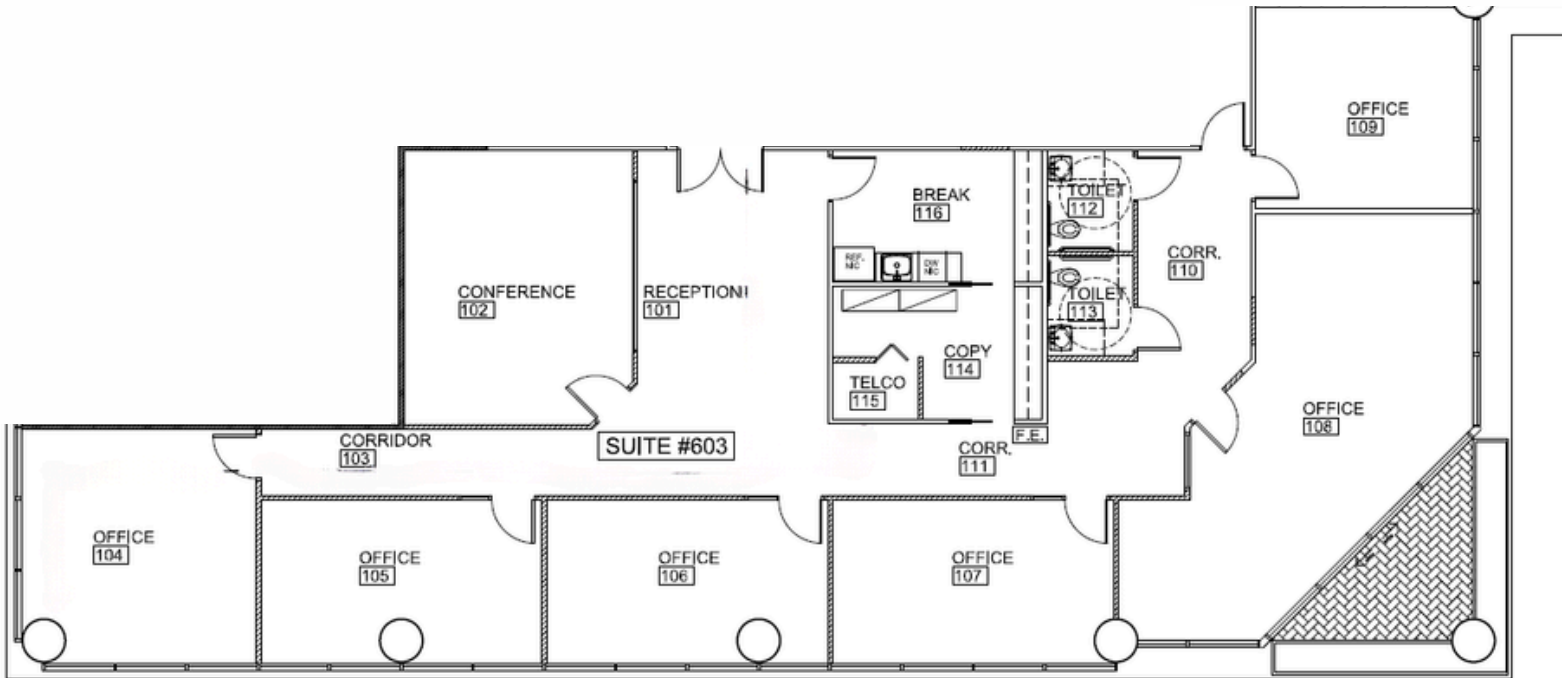


For more information please contact:

Kevin McCarthy
Senior Managing Director
kevin.mccarthy@jll.com
+1 561 292 2668

Kevin Probel
Senior Managing Director
kevin.probel@jll.com
+1 561 676 2131

6th Floor Plan



For more information please contact:

Kevin McCarthy
Senior Managing Director
kevin.mccarthy@jll.com
+1 561 292 2668

Kevin Probel
Senior Managing Director
kevin.probel@jll.com
+1 561 676 2131