



**FOR LEASE**  
**5,226 SF**



**LAKES EDGE | 100% AIR-CONDITIONED FLEX SPACE**

9000 NW 15th Street | Unit 3 | Doral | FL | 33172

TOTAL SF	+/- 5,226 SF
OFFICE SF	+/- 2,000 SF
LOADING	1 Street Level Door
CEILING HEIGHT	20' Clear
LEASE RATE	\$22.00 PSF NNN
OPEX	\$7.00 PSF

- 100% Air Conditioned
- Completely Renovated
- Easy Access to Dolphin & Palmetto Exwy.
- Access to Numerous Doral Amenities
- Ideally Situated in the Doral Finger Lakes

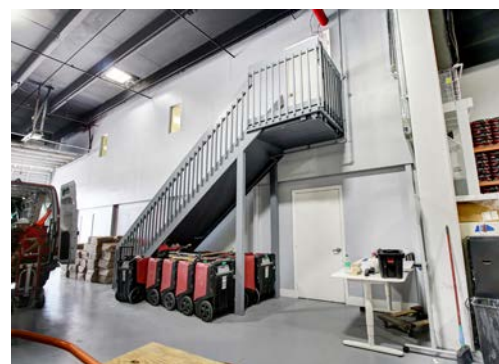
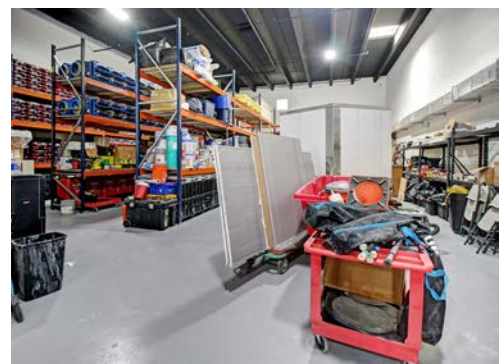
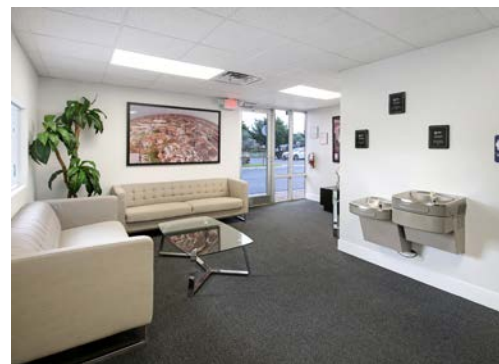
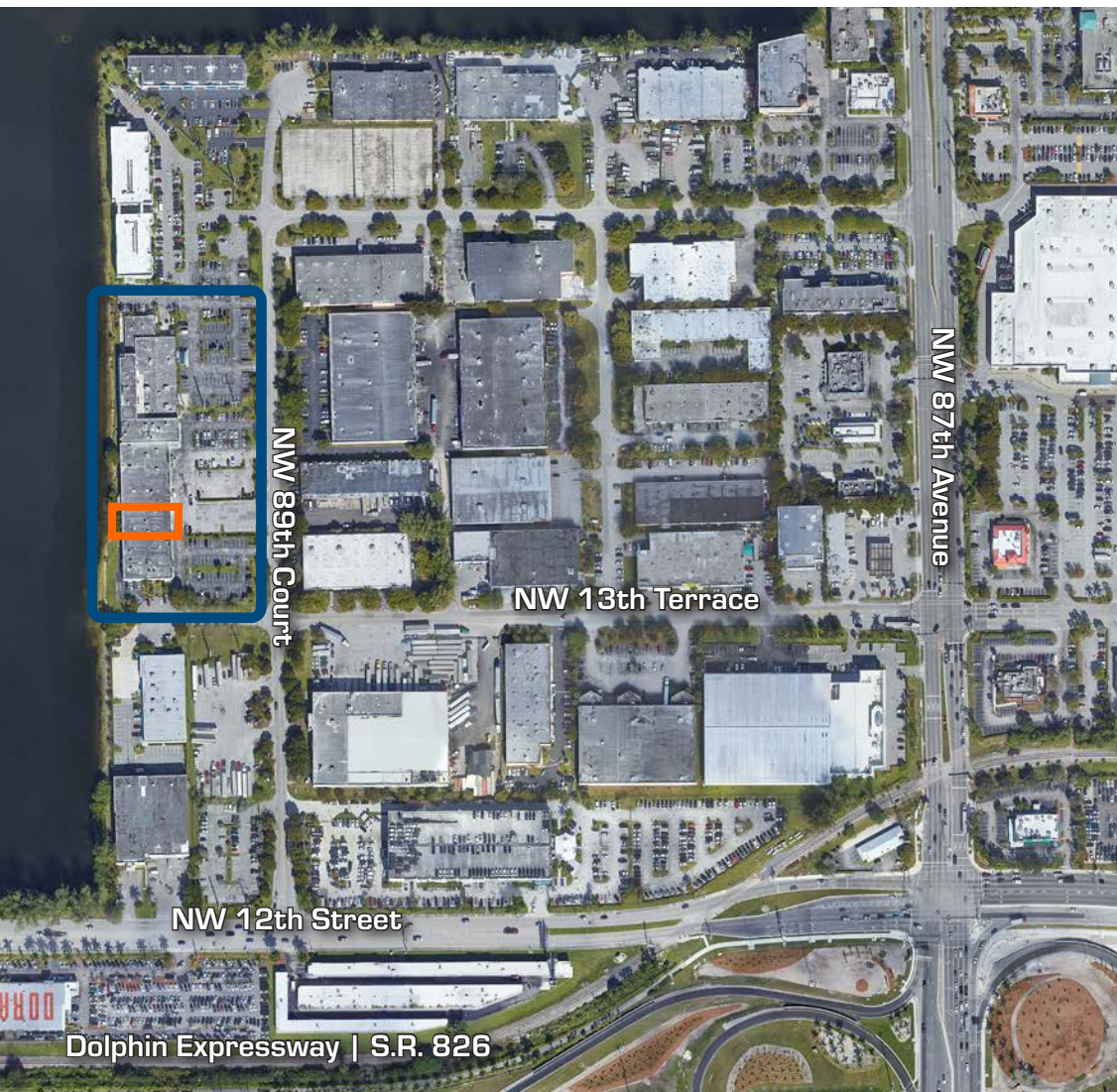


**CONTACT: 305 591 3606**

Ernesto Casal  
ecasal@casal.com

Roger Lopez  
rlopez@casal.com

**CASAL.COM**



CONTACT: 305 591 3606

Ernesto Casal  
ecasal@casal.com

Roger Lopez  
rlopez@casal.com

CASAL.COM