

RETAIL / OFFICE SPACE FOR LEASE

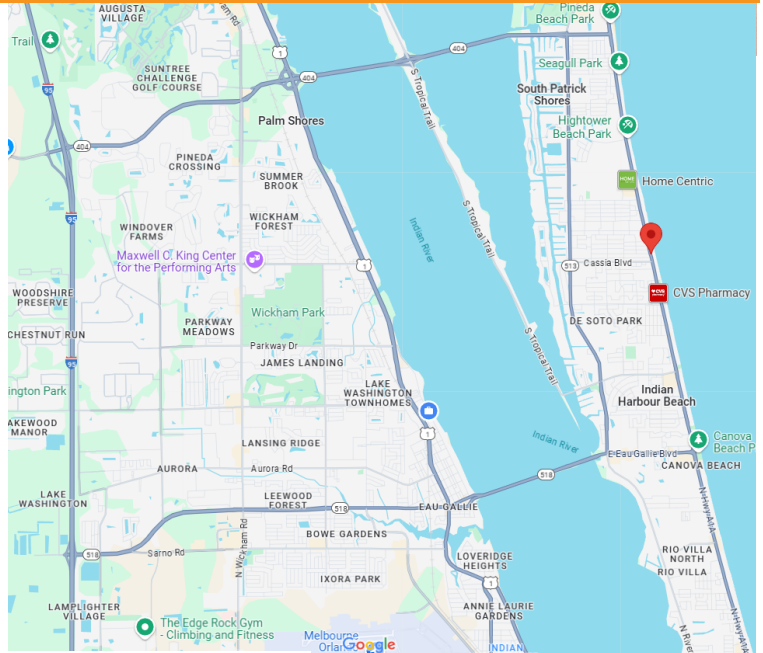
NORWOOD POINT

1357-1363 Hwy A1A, Satellite Beach, FL 32937

FOR LEASE



- Office/Retail in Excellent Beachside Location Along Highway A1A aka Jimmy Buffett Memorial Highway!
- Close to US 1, Eau Gallie Arts District, & Between 2 Causeways for Quick Access Inland!
- Newly Renovated Suites and Freshly Painted Exterior
- High Traffic Counts, Approx 20K Daily Vehicles for Great Visibility
- RM-3 Residential Mixed Use District
- Suite 1357 - Retail Office - Multiple Rooms and 1 Restroom, 650 SF
- Suite 1361 - Retail/Office with Multiple Rooms and 1 Restroom 1,000 SF
- \$20/SF/YR Water & Trash Included



JMREALESTATE.COM

Nicole Reed

JM Real Estate, Inc.

Office: 321.242.2882 x 201

Cell: 314.795.4339

Nicole@JMRealEstate.com

Information contained herein has been obtained from others and is considered to be reliable; however, a prospective purchaser, agent, or lessee is expected to verify all information to their satisfaction. We make no guarantee, warranty, or representations herein. Licensed Real Estate Broker.

RETAIL / OFFICE SPACE FOR LEASE

NORWOOD POINT

1357-1363 Hwy A1A, Satellite Beach, FL 32937

Suite 1357	Suite 1359	Suite 1361	Suite 1363
650 sqft	1,100 sqft	1,000 sqft	1,200 sqft
AVAILABLE	Salon Grace	AVAILABLE	New Hope Counseling

CLICK FOR ZONING CODE - [RM-3 Residential Mixed Use District](#)

DEMOGRAPHICS	1 mile	3 miles	5 miles
2024 Population	7,910	31,094	68,310
2029 Pop Projection	8,600	33,994	74,393
Growth 2024-2029	-0.1%	0.8%	0.2%
Median Age	46.8	48.7	46.9
Bachelor's or Higher	50%	46%	37%
U.S. Armed Forces	49	311	446



JMREALESTATE.COM

Nicole Reed

JM Real Estate, Inc.

Office: 321.242.2882 x 201

Cell: 314.795.4339

Nicole@JMRealEstate.com

Information contained herein has been obtained from others and is considered to be reliable; however, a prospective purchaser, agent, or lessee is expected to verify all information to their satisfaction. We make no guarantee, warranty, or representations herein. Licensed Real Estate Broker.

RETAIL / OFFICE SPACE FOR LEASE

NORWOOD POINT

1357-1363 Hwy A1A, Satellite Beach, FL 32937



YOUR NEW BEACHSIDE LOCATION



JMRealEstate.com

Nicole Reed

JM Real Estate, Inc.

Office: 321.242.2882 x 201

Cell: 314.795.4339

Nicole@JMRealEstate.com

Information contained herein has been obtained from others and is considered to be reliable; however, a prospective purchaser, agent, or lessee is expected to verify all information to their satisfaction. We make no guarantee, warranty, or representations herein. Licensed Real Estate Broker.

RETAIL / OFFICE SPACE FOR LEASE

NORWOOD POINT

1357-1363 Hwy A1A, Satellite Beach, FL 32937



SUITE 1357 - 650 SF

Vinyl Plank Flooring, Fresh Paint, Move-In Ready Suite



JMRealEstate.com

Nicole Reed

JM Real Estate, Inc.

Office: 321.242.2882 x 201

Cell: 314.795.4339

Nicole@JMRealEstate.com

Information contained herein has been obtained from others and is considered to be reliable; however, a prospective purchaser, agent, or lessee is expected to verify all information to their satisfaction. We make no guarantee, warranty, or representations herein. Licensed Real Estate Broker.

RETAIL / OFFICE SPACE FOR LEASE

NORWOOD POINT

1357-1363 Hwy A1A, Satellite Beach, FL 32937



SUITE 1361 - 1,000 SF

Vinyl Plank Flooring, Fresh Paint, Move-In Ready Suite



JMREALESTATE.COM

Nicole Reed

JM Real Estate, Inc.

Office: 321.242.2882 x 201

Cell: 314.795.4339

Nicole@JMRealEstate.com

Information contained herein has been obtained from others and is considered to be reliable; however, a prospective purchaser, agent, or lessee is expected to verify all information to their satisfaction. We make no guarantee, warranty, or representations herein. Licensed Real Estate Broker.