



For Lease

545 N Park Avenue | Winter Park, FL 32789



Property Highlights



2,600 SF Total
Retail/Office Space



Located in the Heart of
Historic Winter Park



Located at the Hard
Corner of Park Ave and
W Swoope Ave



Easily Accessible via
Street and On Site
Parking


STREAM

2,600 SF Single Story Retail/Office Building in Prime Downtown Winter Park Location

Property Overview

- 2,600 SF RARE opportunity for retail/office at hard corner
- High exposure to Park Avenue traffic/patrons
- Ability to divide the space into “front of house” and “back of house”
- Showroom/retail fronting Park Avenue entrance with ability to have 6-8 offices and open work areas throughout the building

For Leasing Information, please contact:

Darryl Hoffman
darrylhoffman@streamrealty.com
T. 407.204.1548

Jacob Attaway
jacobattaway@streamrealty.com
T. 407.204.9923

For Lease

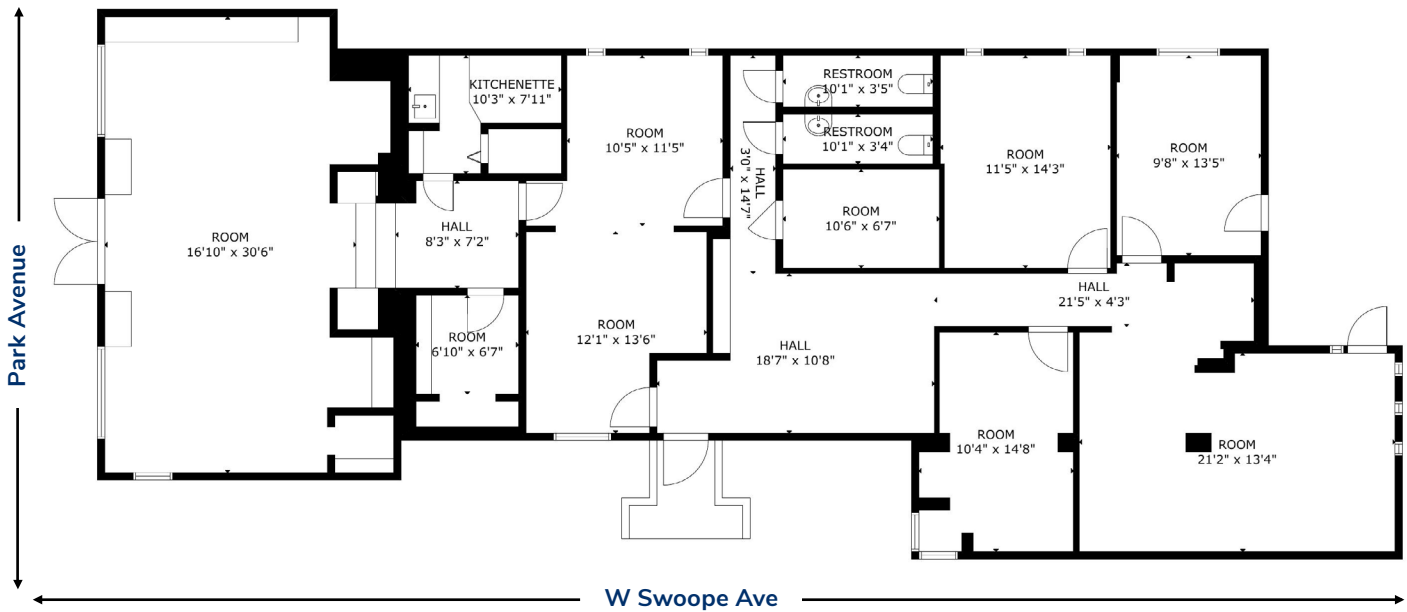


545 N Park Avenue | Winter Park, FL 32789



Floor Plan

2,600 SF



For Leasing Information, please contact:

Darryl Hoffman

darrylhoffman@streamrealty.com

T. 407.204.1548

Jacob Attaway

jacobattaway@streamrealty.com

T. 407.204.9923



For Lease

545 N Park Avenue | Winter Park, FL 32789



For Leasing Information, please contact:

Darryl Hoffman

darrylhoffman@streamrealty.com

T. 407.204.1548

Jacob Attaway

jacobattaway@streamrealty.com

T. 407.204.9923

