



HAMPTONS COMMERCIAL
REAL ESTATE TEAM

FOR LEASE

**670 Montauk Hwy,
Water Mill**



WATER MILL SQUARE OFFICES

Four turn-key second floor office units
available together or separately.

AVAILABLE:

- Office 1 - 362sf @ \$1,900/mo + \$140 CAM
- Office 4 - 138sf @ \$1,000/mo + \$95 CAM
- Office 7 - 211sf @ \$1,200/mo + \$115 CAM
- Office 8 - 99sf @ \$900/mo + \$80 CAM

Plus Pro Rata of snow/ice removal and RET.

Water Mill Square is an ideal office location
thanks to its central location and
convenient parking. Great mix of food and
utilitarian co-tenants in the center.

SURROUNDING NEIGHBORS:

USPS Water Mill, Suki Zuki, Green Thumb, Hampton Kitchen,
Calissa, Bistro Ete, Hampton Coffee, Tracy Anderson Method,
Watermill Pilates, Water Mill Wine & Spirits, Joy Salon



The Hamptons Commercial Real Estate Team

(631) 678-2460 (631) 903-5022
hamptonscommercialre@compass.com
@hamptonscommercialre
hamptonscommercialre.com

COMPASS

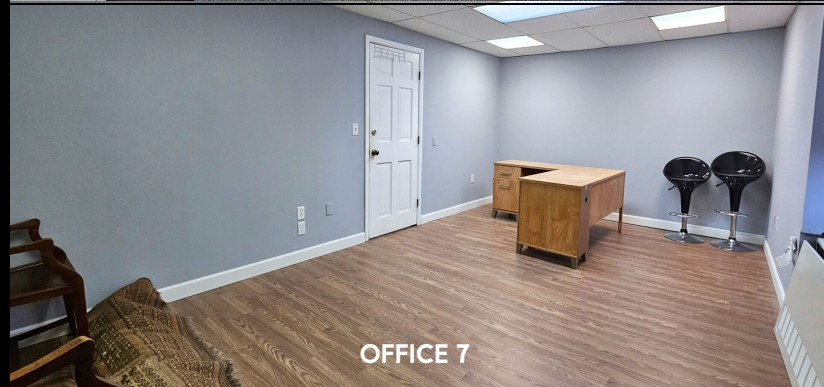
Compass is a licensed real estate broker. All material is intended for informational purposes only and is compiled from sources deemed reliable but is subject to errors, omissions, changes in price, condition, sale, or withdrawal without notice. No statement is made as to the accuracy of any description or measurements (including square footage). This is not intended to solicit property already listed. No financial or legal advice provided. Equal Housing Opportunity. All Coming Soon listings in NYC are simultaneously syndicated to the REBNY RLS. Photos may be virtually staged or digitally enhanced and may not reflect actual property conditions.



OFFICE 1



OFFICE 4



OFFICE 7



OFFICE 8