



For Lease

+/- 15,000 SF Office Space Available

- Easy access to I-95 and Route 1
- Modern lobby/reception area with private offices, conference rooms, and kitchen/break room
- Contemporary interior with high ceilings and great natural light
- Large storage area
- 5.8/1000 SF parking ratio (~70 total parking spaces available)
- Minutes from Northeast Philadelphia Airport
- Accessible via SEPTA Bus Routes 1, 20, & 50

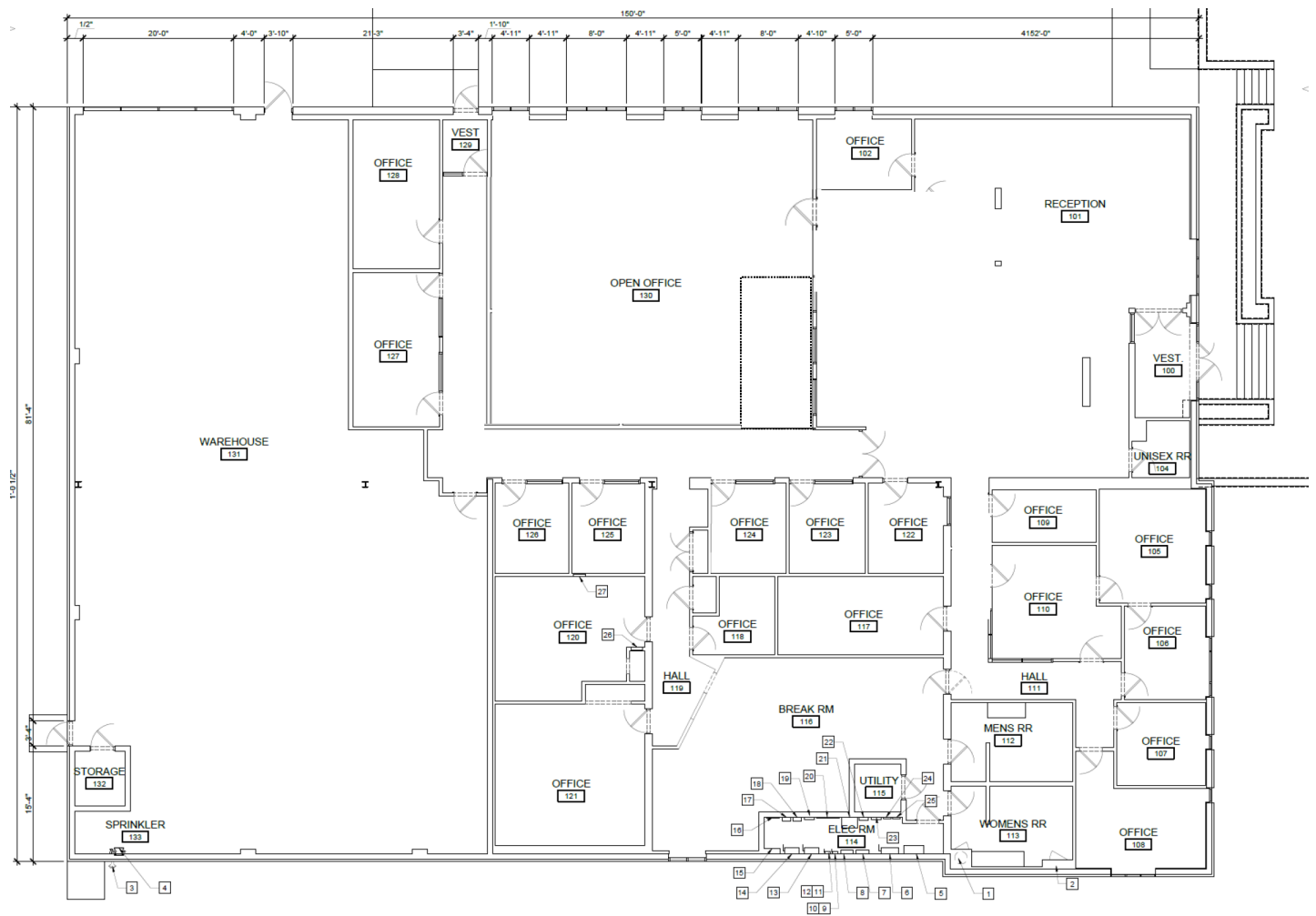
**10400 Drummond Road
Philadelphia, PA**

Austin Weitz
+1 609 221 5848
austin.weitz@am.jll.com

JLL | Jones Lang LaSalle
1700 Market Street Street,
Suite 2400 Philadelphia, PA 19103
+1 215 988 5500

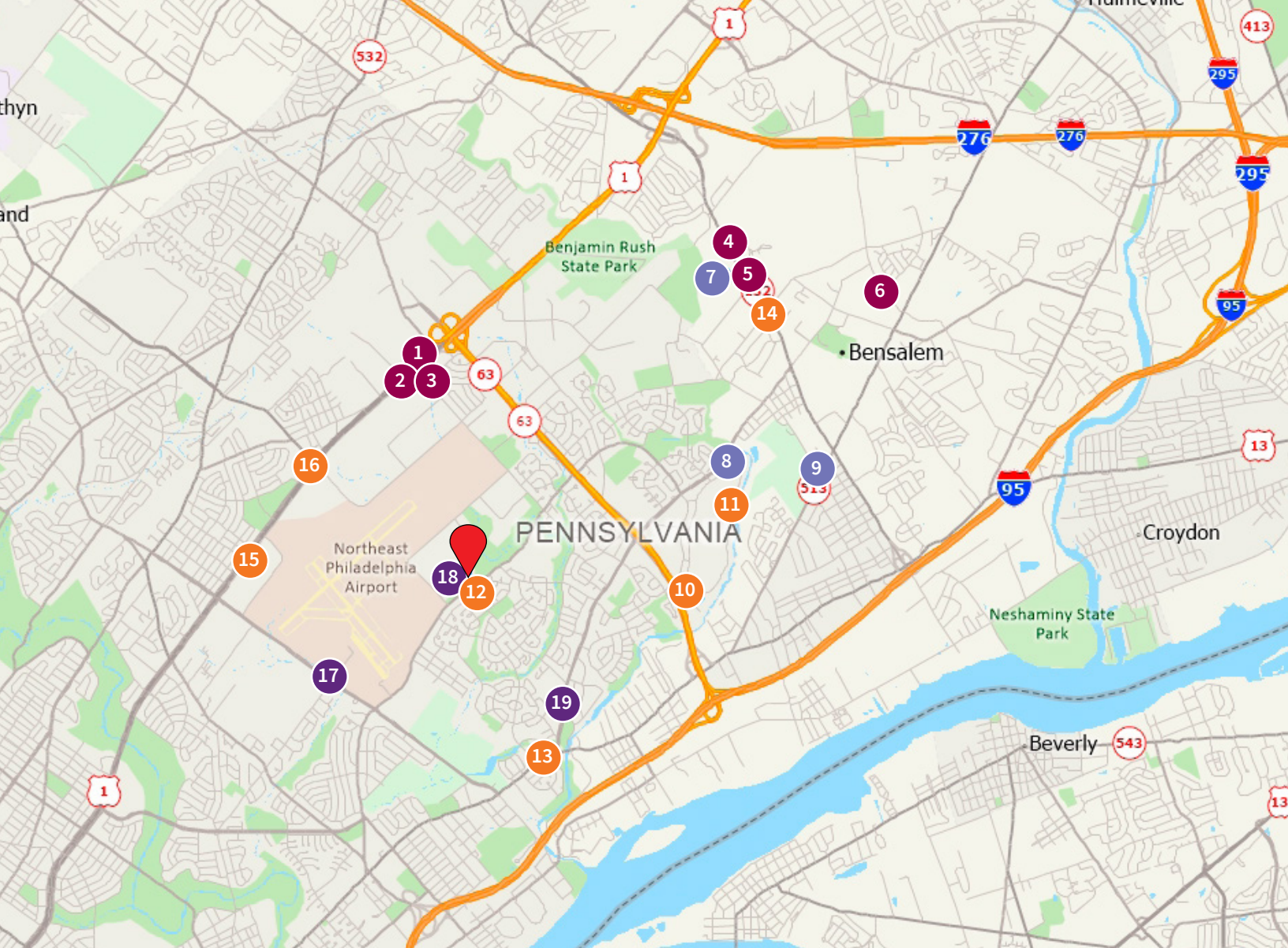


Floor Plan



Contemporary Interior





Nearby amenities include:



Eat and Drink

1. Chickie's & Pete's
2. Mission BBQ
3. Steve's Prince of Steaks
4. Outback Steakhouse
5. Carrabba's Italian Grill
6. La Cena Restaurant



Play

7. Parx Casino
8. Dave & Buster's
9. Bensalem Country Club



Shop

10. Walmart Supercenter
11. Philadelphia Mills
12. Academy Plaza Shopping Center
13. Morrell Plaza
14. Showcase Plaza Shopping Center
15. Whitman Square Shopping Center
16. Red Lion Shopping Plaza



Convenience

17. Northeast Philadelphia Airport
18. United States Post Office
19. Jefferson Torresdale Hospital

DISCLAIMER

Although information has been obtained from sources deemed reliable, neither Owner nor JLL makes any guarantees, warranties or representations, express or implied, as to the completeness or accuracy as to the information contained herein. Any projections, opinions, assumptions or estimates used are for example only. There may be differences between projected and actual results, and those differences may be material. The Property may be withdrawn without notice. Neither Owner nor JLL accepts any liability for any loss or damage suffered by any party resulting from reliance on this information. If the recipient of this information has signed a confidentiality agreement regarding this matter, this information is subject to the terms of that agreement. ©2020. Jones Lang LaSalle IP, Inc. All rights reserved.

