



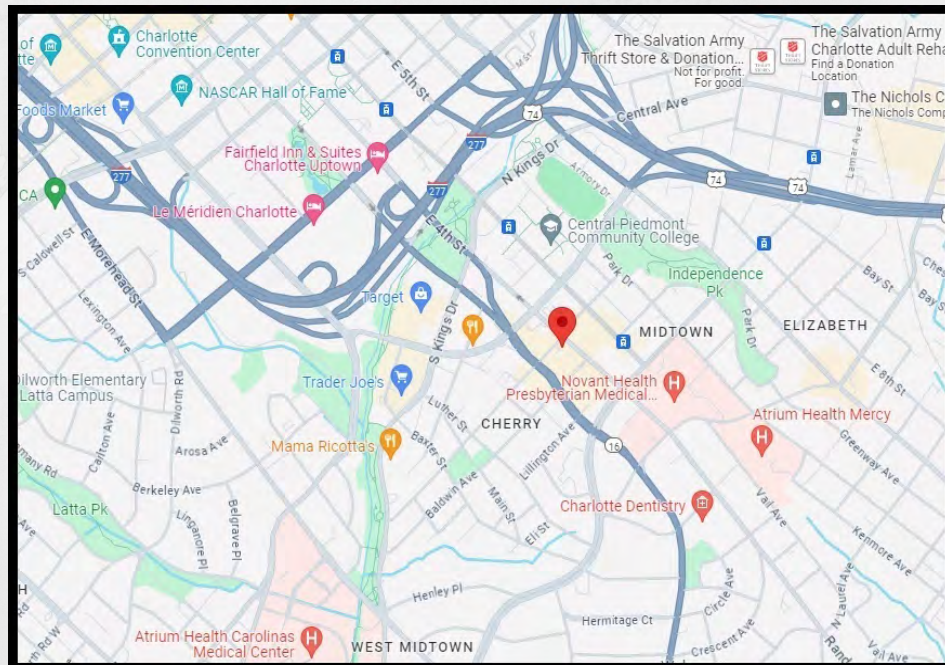
# FOR LEASE

1500 E. 4th Street, Charlotte, NC



## Features

- Ideal Law Office or Coffee shop
- Newly Remodeled – Corner Lot
- 2,385 USF & 3,419 RSF
- Zoned (CG) General Commercial
- (2) Executive Offices; (2) Private Offices; Large Conference Room;
- (2) Open Work Areas
- (4) Restrooms; (2) Breakrooms
- Close to Courthouses, Novant Hospital, CPCC, Midtown, Southend & Uptown
- Ample Newly Paved Parking Lot
- \$7,500 per month NNN



H.P. Smith, CCIM  
hpsmith@gsrc.net  
704-333-7151 Ext. 307

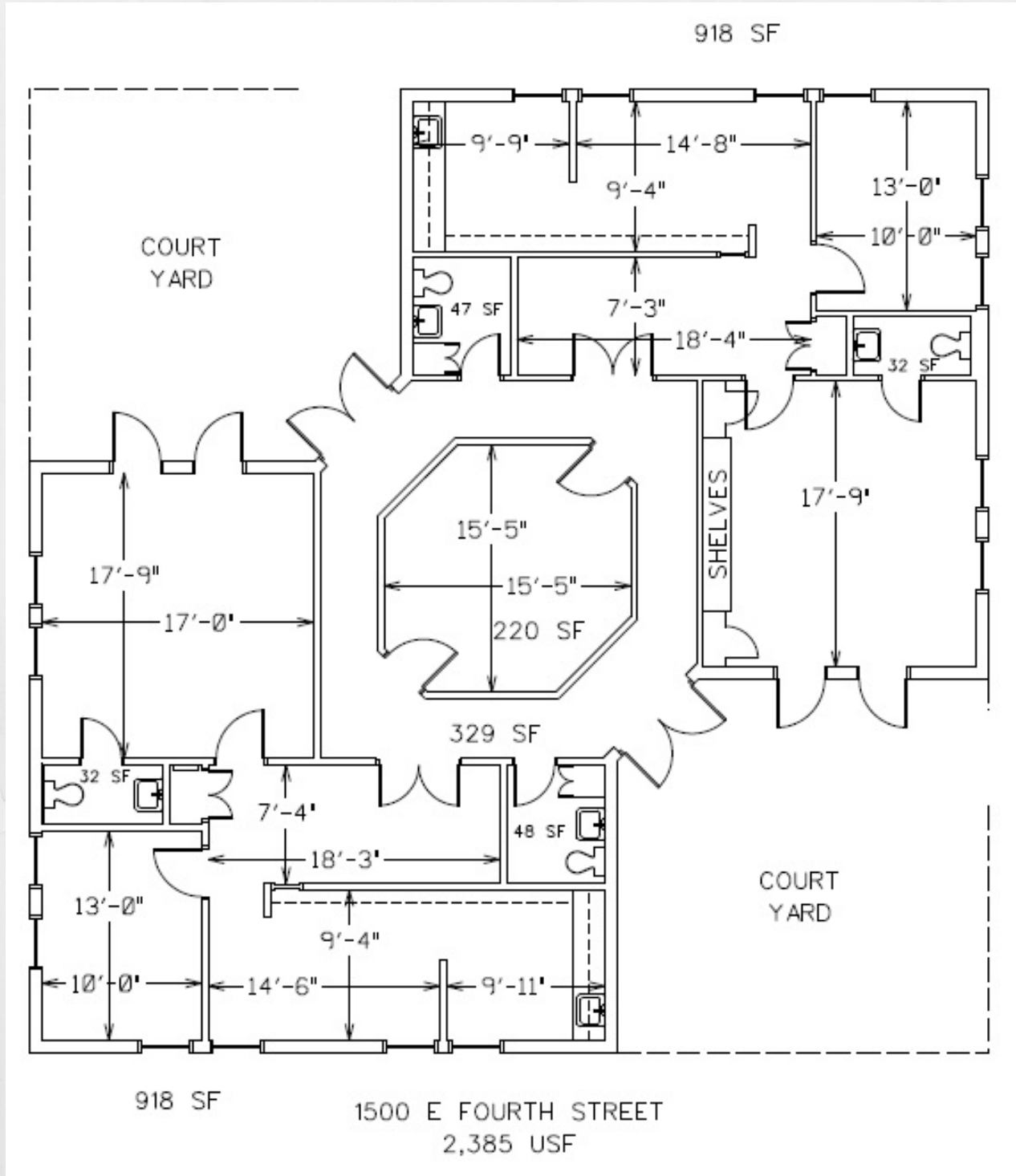
Gibson Smith Realty Co.  
1100 Kenilworth Avenue, Ste 200  
Charlotte, NC 28204  
www.gsrc.net





# FOR LEASE

1500 E. 4th Street, Charlotte, NC



**H.P. Smith, CCIM**  
hpsmith@gsrc.net  
704-333-7151 Ext. 307

**Gibson Smith Realty Co.**  
1100 Kenilworth Avenue, Ste 200  
Charlotte, NC 28204  
www.gsrc.net



# FOR LEASE

1500 E. 4th Street, Charlotte, NC



**H.P. Smith, CCIM**  
hpsmith@gsrc.net  
704-333-7151 Ext. 307

**Gibson Smith Realty Co.**  
1100 Kenilworth Avenue, Ste 200  
Charlotte, NC 28204  
www.gsrc.net