

For Lease

8,200 SF Retail/Office Available

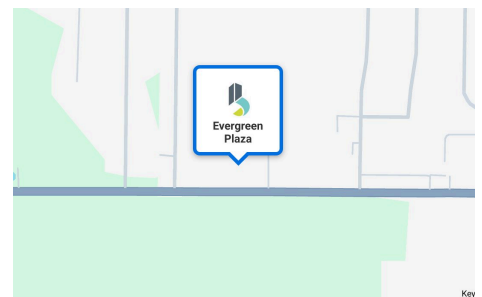


Evergreen Plaza

Michigan City, IN, 46360

1,600 SF floor plan great for an insurance agency, attorney intake, financial services, or other office user. Reception area with seven offices and an in-suite bathroom. Highly visible, facing US HWY 20 east of the US HWY 20 and US - 421 intersection. Anchored by the Bureau of Motor Vehicles the retail center has abundant parking and offers building signage for over 13,400 vehicles to view daily. The other floor plan is open and better suited for a retail user.

Lease Rate	\$8.00/NNN
Available SF	1,600-5,000 SF
Building Size	19,456 SF
Lot Size	2.75 AC



Steve Nicksic, CCIM
Senior Broker
snicksic@bradleyco.com
219.508.0554

Jim Nicksic
Senior Broker
jnicksic@bradleyco.com
219.743.3825

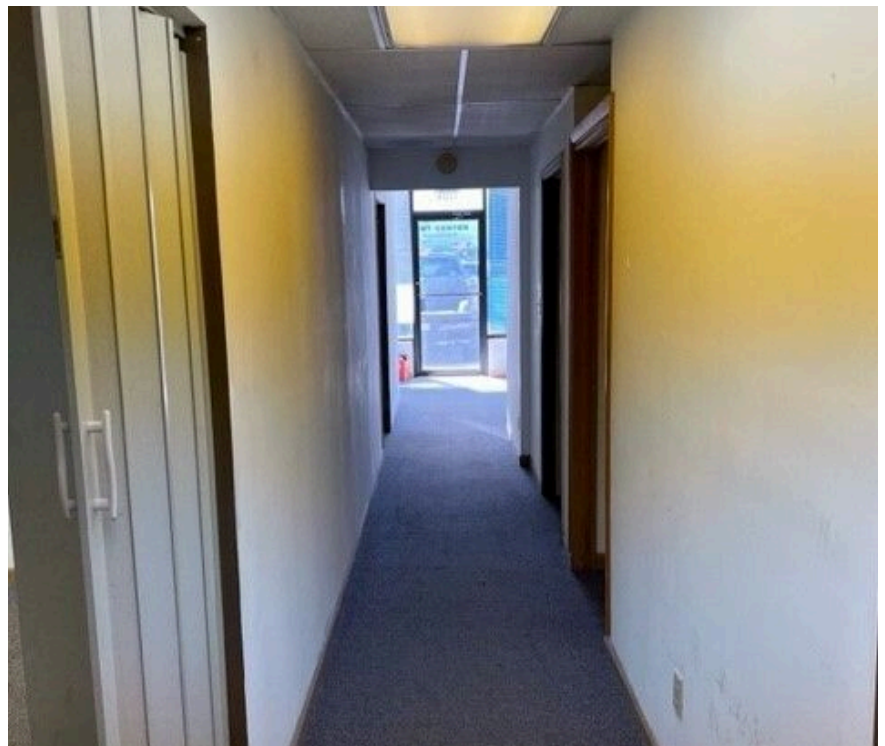
www.bradleyco.com

Photos

1706 E Us Highway 20 , Michigan City, IN 46360

Highlights

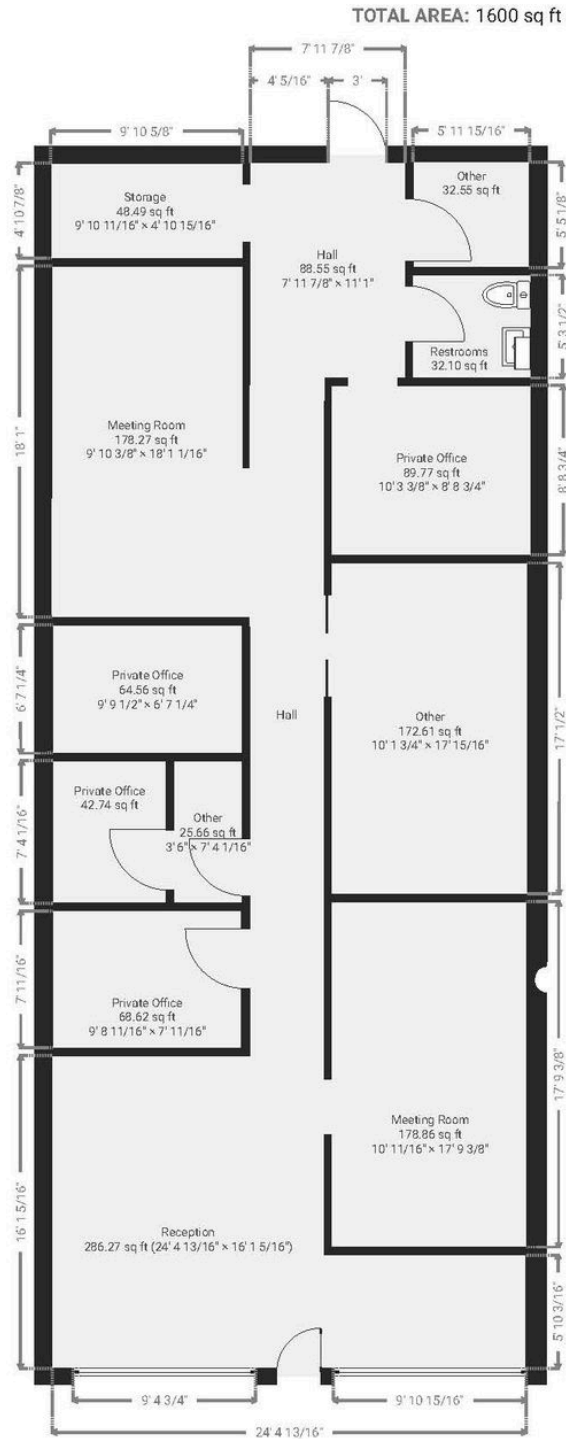
- 1,600 SF suite available ideal for office use and 1,600-5,000 SF retail spaces
- Active retail center providing excellent visibility facing US HWY 20 and anchored by the Michigan City Bureau of Motor Vehicles
- Located on US HWY 20 just east of the intersection of US HWY 20 and US 421 with daily traffic count over 13,400 vehicles
- Great for an insurance agency, attorney intake, financial services, or other office user
- Also can be easily converted to any retail storefront use
- Abundant parking available for customers and employees



Floor Plan

1706 E Us Highway 20 , Michigan City, IN 46360

1706 US Hwy 20, Michigan City
TOTAL AREA: 1600 sq ft

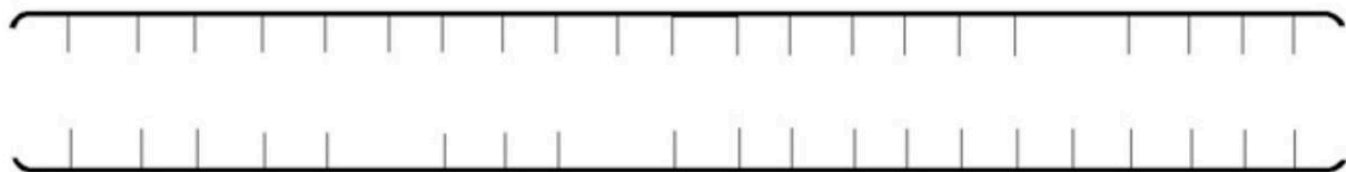


Site Plan

1706 E Us Highway 20 , Michigan City, IN 46360



**1724
Available
5,000 SF**



Spaces	Lease Rate	Space Size
Suite 1706	\$8/NNN	1,600 SF
Suite 1720	\$8/NNN	1,600 SF
Suite 1724	\$8/NNN	5,000 SF