

Warehouse | For Lease

CBRE

# Grenoble Commerce Center

2,870 SF Up To 15,382± SF Available

2419 Grenoble Road  
Richmond, Virginia 23294

\$12.00/SF, NNN (\$1.20/SF) - Ability To Subdivide



BUILDING RENDERING

# Grenoble Commerce Center

2419 Grenoble Road | Richmond, Virginia 23294

## Property Features

- + Individual Warehouse Bays Available: 2,870 SF up to 3,737 SF
- + 12' Clear Height
- + Zoned M-1
- + Loading Dock Served
- + 3 Loading Dock Positions
- + 2 Truck-Height Docks
- + Close Proximity To I-64 and Glenside Drive
- + For Lease: \$12.00/SF, NNN (\$1.20/SF)

## Floor Plan



For Lease



23K

Total Building SF

12'

Clear Heights

M-1

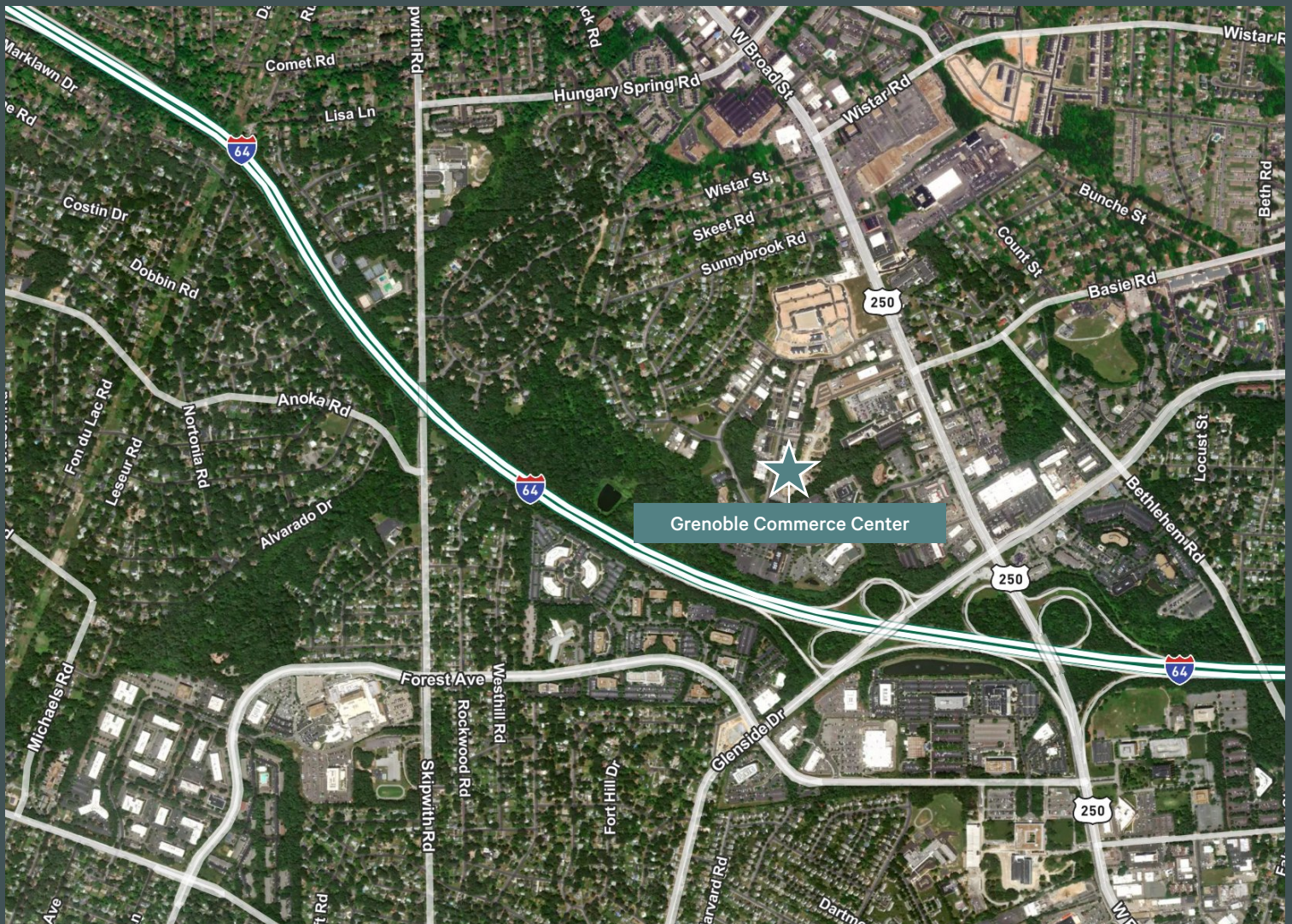
Light Industrial Zoning District

Local Demographics	1 Mile	3 Miles	5 Miles
Population	9,485	98,470	230,465
Households	3,982	41,411	99,993
Average Household Income	\$89,456	\$115,123	\$129,536
Businesses	889	5,378	10,642
Employees	14,885	76,851	148,885

# Grenoble Commerce Center

2419 Grenoble Road | Richmond, Virginia 23294

For Lease



## Contact Us

### Matt Hamilton

Senior Vice President

+1 804 401 4005

[matt.hamilton@cbre.com](mailto:matt.hamilton@cbre.com)

### CBRE

1802 Bayberry Court

Suite 201

Richmond, VA 23226

© 2025 CBRE, Inc. All rights reserved. This information has been obtained from sources believed reliable, but has not been verified for accuracy or completeness. You should conduct a careful, independent investigation of the property and verify all information. Any reliance on this information is solely at your own risk. CBRE and the CBRE logo are service marks of CBRE, Inc. All other marks displayed on this document are the property of their respective owners, and the use of such logos does not imply any affiliation with or endorsement of CBRE. Photos herein are the property of their respective owners. Use of these images without the express written consent of the owner is prohibited.