

MANUFACTURING FACILITY

6770 NORTH 43RD STREET, MILWAUKEE, WI 53209

INDUSTRIAL FOR
SALE OR LEASE



FOR SALE & LEASE



AMK PROPERTIES TEAM
Suntide Commercial Realty
2550 University Avenue W. #305-S
St. Paul, MN 55114
651-603-0321

MATTHEW KLEIN, CCIM
Senior Vice President, Principal
(612) 382-3403
mklein@suntide.com
20186454, Minnesota



MANUFACTURING FACILITY

6770 NORTH 43RD STREET, MILWAUKEE, WI 53209

INDUSTRIAL FOR
SALE OR LEASE



OFFERING SUMMARY

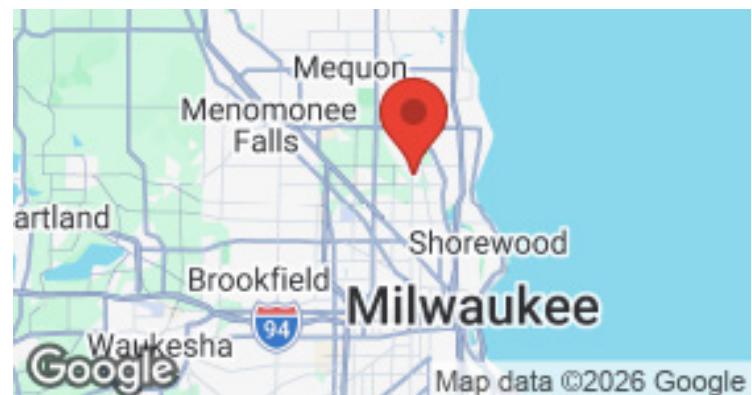
PRICE:	\$1,350,000
LEASE RATE:	\$3 PSF Net - WHS \$7 PSF Net - OFC
BUILDING SF:	51,566 <i>(not including mezzanine)</i>
WAREHOUSE SF:	44,496
OFFICE SF:	7,070
DOCK DOORS:	Three (3) w/Levelers
GRADE DOORS:	One (1) 14 FT
CLEAR HEIGHT:	11 FT - 18 FT
POWER:	600 amp/240/3-Phase
LOT SIZE:	2.09 Acres

PROPERTY OVERVIEW

Prime Manufacturing Facility for Sale and Lease. This property, zoned IL1-Light Industrial, has three (3) Dock Doors w/Levelers, one (1) 14' Overhead Door, 600 amp electrical service, and potential to add additional docks or overhead doors.

PROPERTY HIGHLIGHTS

- Three (3) Dock Doors w/Levelers
- One (1) 14' Overhead Door
- 11' - 18' Clear Height
- 600 amp/240/3-Phase
- 5,153 SF 2nd Floor Mezzanine
- Floor Drains in Warehouse
- Fenced Lot
- Potential to Add Additional Overhead Doors



AMK PROPERTIES TEAM
Suntide Commercial Realty
2550 University Avenue W. #305-S
St. Paul, MN 55114
651-603-0321

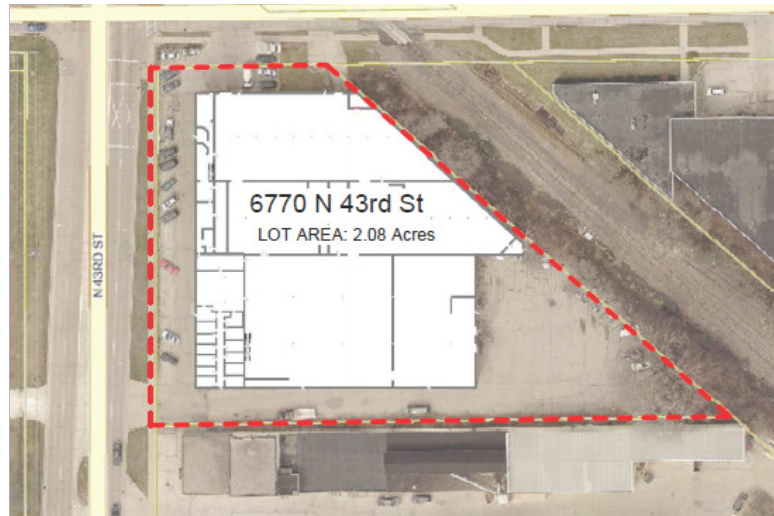
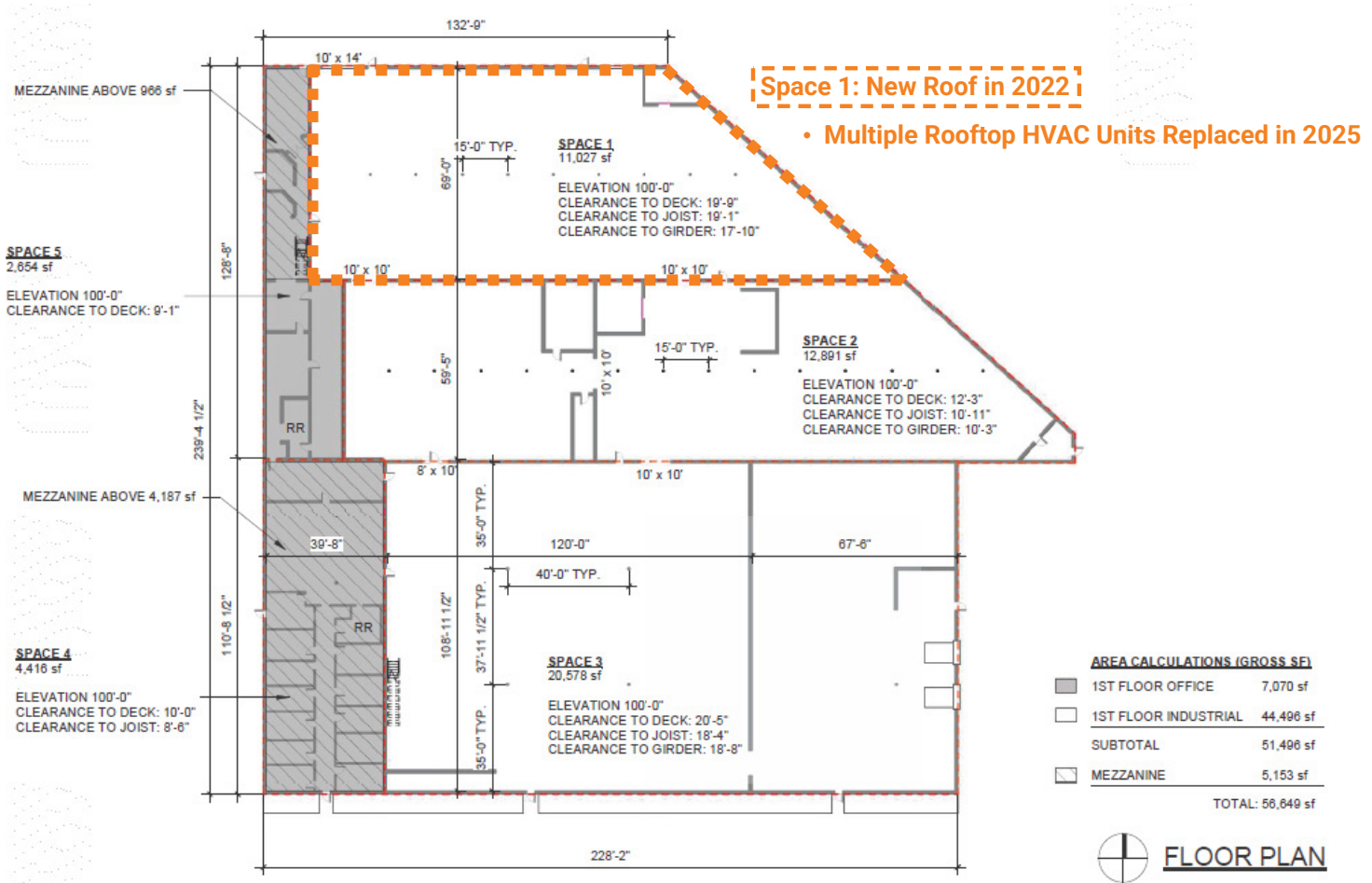
MATTHEW KLEIN, CCIM
Senior Vice President, Principal
(612) 382-3403
mklein@suntide.com
20186454, Minnesota



SITE AND FLOOR PLAN

6770 NORTH 43RD STREET, MILWAUKEE, WI 53209

INDUSTRIAL FOR SALE OR LEASE



AMK PROPERTIES TEAM
Suntide Commercial Realty
2550 University Avenue W. #305-S
St. Paul, MN 55114
651-603-0321

MATTHEW KLEIN, CCIM
Senior Vice President, Principal
(612) 382-3403
mklein@suntide.com
20186454, Minnesota



PROPERTY PHOTOS

6770 NORTH 43RD STREET, MILWAUKEE, WI 53209

INDUSTRIAL FOR
SALE OR LEASE



AMK PROPERTIES TEAM
Suntide Commercial Realty
2550 University Avenue W. #305-S
St. Paul, MN 55114
651-603-0321

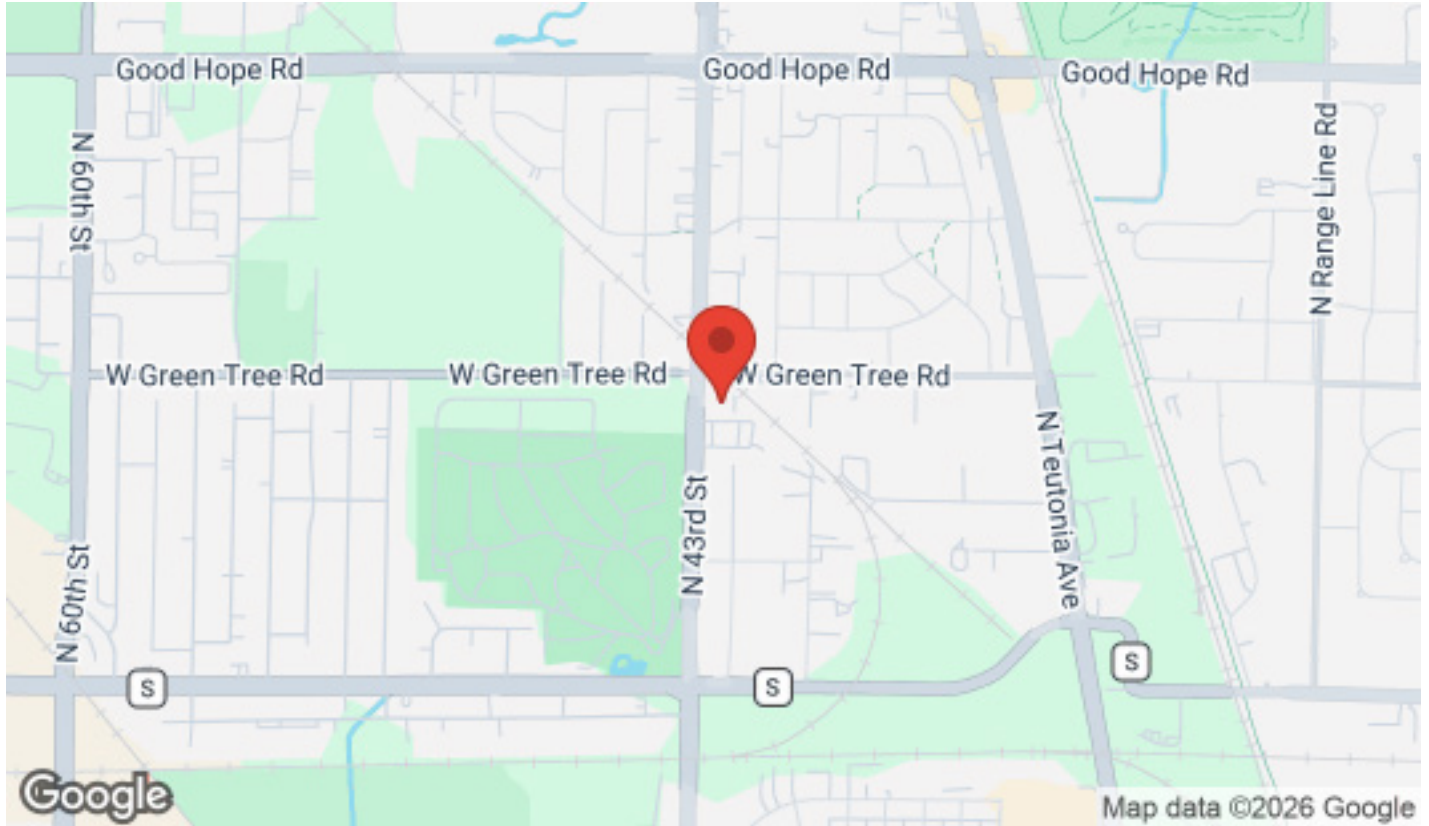
MATTHEW KLEIN, CCIM
Senior Vice President, Principal
(612) 382-3403
mklein@suntide.com
20186454, Minnesota



LOCATION MAPS

6770 NORTH 43RD STREET, MILWAUKEE, WI 53209

INDUSTRIAL FOR
SALE OR LEASE



AMK PROPERTIES TEAM
Suntide Commercial Realty
2550 University Avenue W. #305-S
St. Paul, MN 55114
651-603-0321

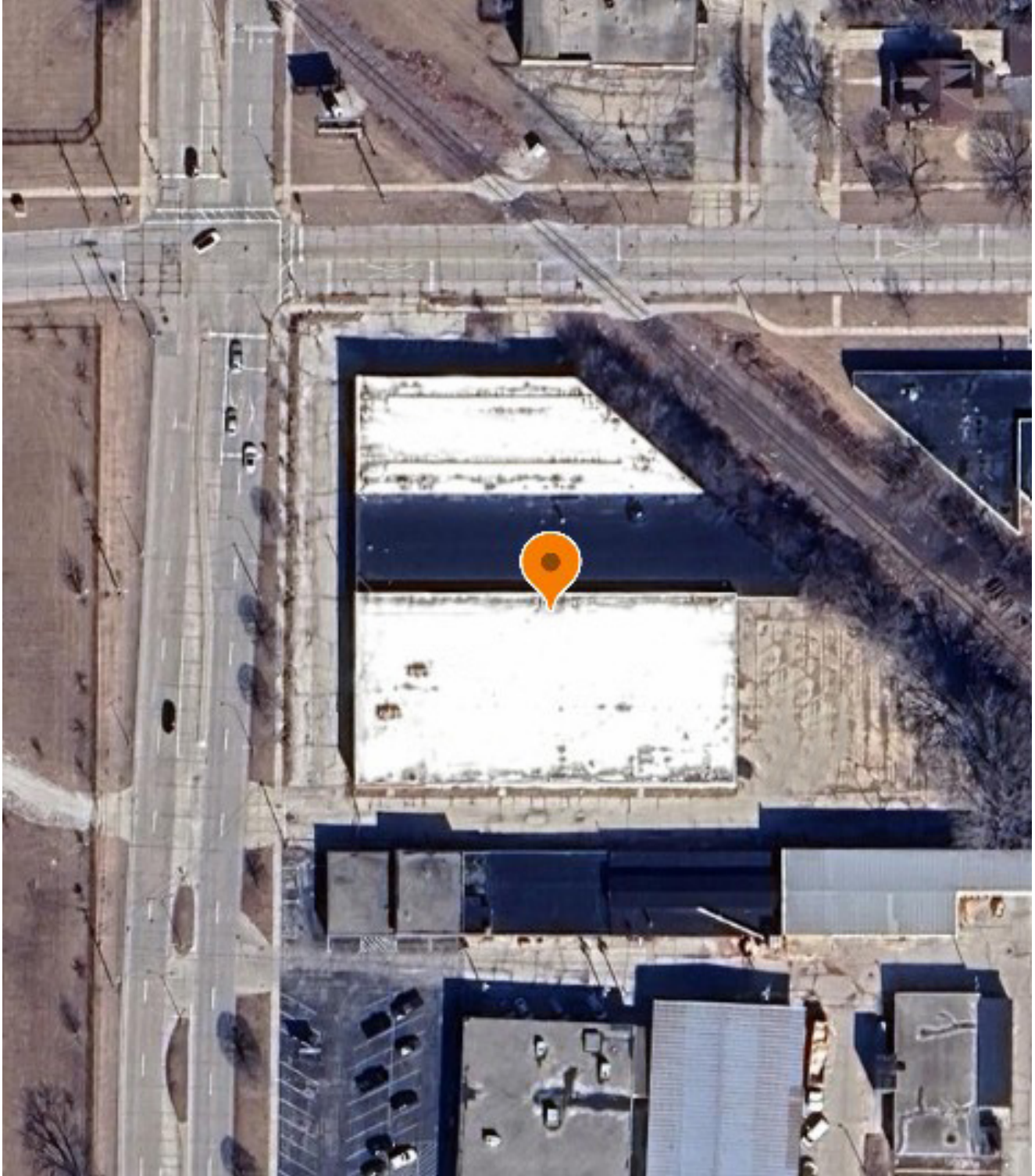
MATTHEW KLEIN, CCIM
Senior Vice President, Principal
(612) 382-3403
mklein@suntide.com
20186454, Minnesota



AERIAL MAP

6770 NORTH 43RD STREET, MILWAUKEE, WI 53209

INDUSTRIAL FOR
SALE OR LEASE



AMK PROPERTIES TEAM
Suntide Commercial Realty
2550 University Avenue W. #305-S
St. Paul, MN 55114
651-603-0321

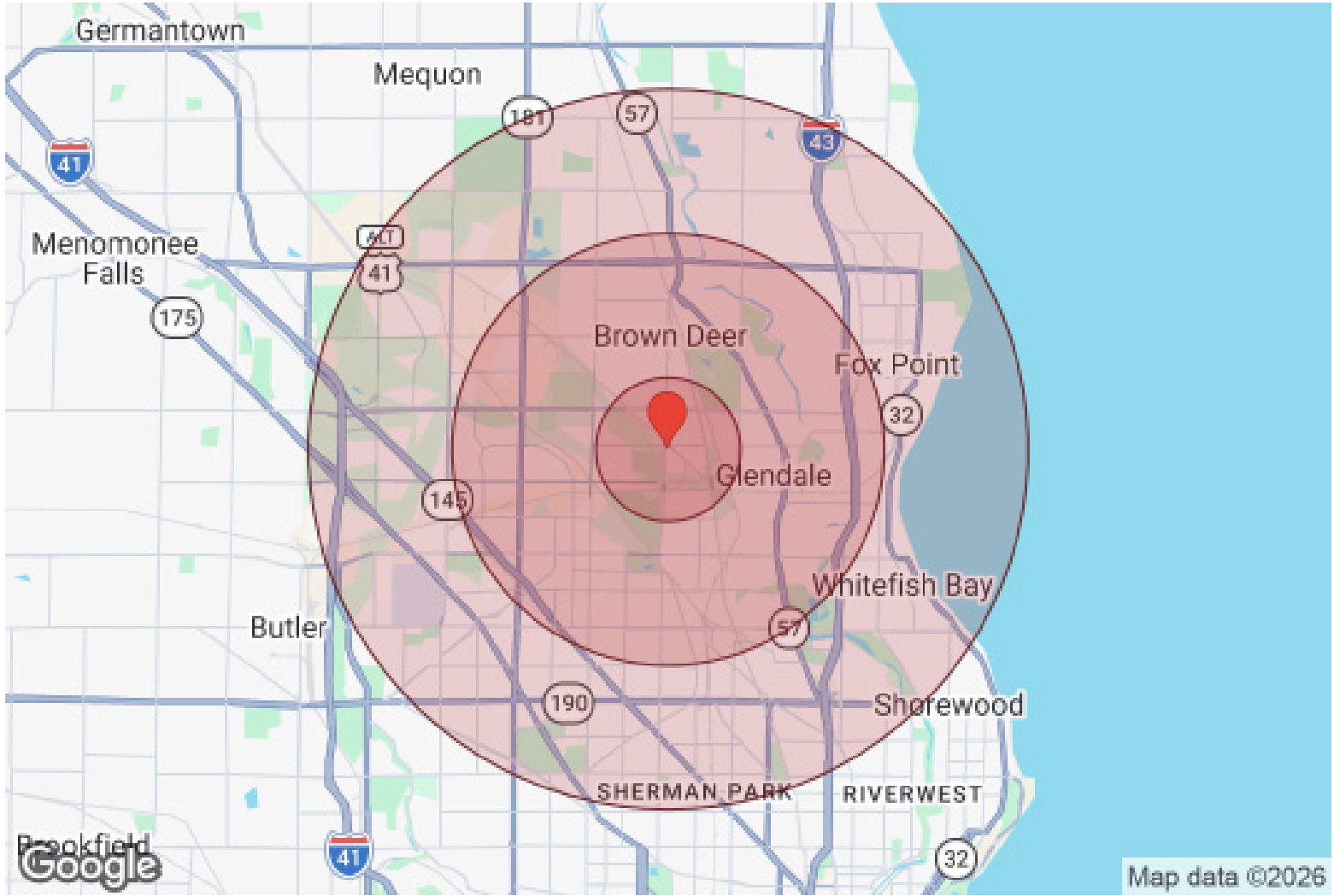
MATTHEW KLEIN, CCIM
Senior Vice President, Principal
(612) 382-3403
mklein@suntide.com
20186454, Minnesota



DEMOGRAPHICS

6770 NORTH 43RD STREET, MILWAUKEE, WI 53209

INDUSTRIAL FOR
SALE OR LEASE



Map data ©2026

Population	1 Mile	3 Miles	5 Miles
Male	4,584	46,915	134,262
Female	5,405	53,699	153,370
Total Population	9,989	100,614	287,632

Age	1 Mile	3 Miles	5 Miles
Ages 0-14	2,792	25,500	70,981
Ages 15-24	1,651	16,082	44,784
Ages 25-54	3,814	36,119	105,443
Ages 55-64	915	10,455	30,507
Ages 65+	817	12,458	35,917

Race	1 Mile	3 Miles	5 Miles
White	2,016	29,409	95,574
Black	7,214	63,517	174,706
Am In/AK Nat	8	43	97
Hawaiian	N/A	9	18
Hispanic	485	4,389	12,227
Multi-Racial	936	6,078	17,532

Income	1 Mile	3 Miles	5 Miles
Median	\$35,239	\$37,228	\$37,553
< \$15,000	853	6,445	19,420
\$15,000-\$24,999	523	5,473	15,359
\$25,000-\$34,999	475	5,191	14,636
\$35,000-\$49,999	909	6,631	16,834
\$50,000-\$74,999	623	6,142	19,140
\$75,000-\$99,999	312	4,265	11,359
\$100,000-\$149,999	144	2,589	8,932
\$150,000-\$199,999	10	528	2,425
> \$200,000	11	673	3,114

Housing	1 Mile	3 Miles	5 Miles
Total Units	4,104	43,025	125,666
Occupied	3,869	39,664	114,509
Owner Occupied	1,537	22,332	61,884
Renter Occupied	2,332	17,332	52,625
Vacant	235	3,361	11,157



AMK PROPERTIES TEAM
Suntide Commercial Realty
2550 University Avenue W. #305-S
St. Paul, MN 55114
651-603-0321

MATTHEW KLEIN, CCIM
Senior Vice President, Principal
(612) 382-3403
mklein@suntide.com
20186454, Minnesota



All materials and information received or derived from Suntide Commercial Realty its directors, officers, agents, advisors, affiliates and/or any third party sources are provided without representation or warranty as to completeness, veracity, or accuracy, condition of the property, compliance or lack of compliance with applicable governmental requirements, developability or suitability, financial performance of the property, projected financial performance of the property for any party's intended use or any and all other matters.

Neither Suntide Commercial Realty its directors, officers, agents, advisors, or affiliates makes any representation or warranty, express or implied, as to accuracy or completeness of the any materials or information provided, derived, or received. Materials and information from any source, whether written or verbal, that may be furnished for review are not a substitute for a party's active conduct of its own due diligence to determine these and other matters of significance to such party. Suntide Commercial Realty will not investigate or verify any such matters or conduct due diligence for a party unless otherwise agreed in writing.

EACH PARTY SHALL CONDUCT ITS OWN INDEPENDENT INVESTIGATION AND DUE DILIGENCE.

Any party contemplating or under contract or in escrow for a transaction is urged to verify all information and to conduct their own inspections and investigations including through appropriate third-party independent professionals selected by such party. All financial data should be verified by the party including by obtaining and reading applicable documents and reports and consulting appropriate independent professionals. Suntide Commercial Realty makes no warranties and/or representations regarding the veracity, completeness, or relevance of any financial data or assumptions. Suntide Commercial Realty does not serve as a financial advisor to any party regarding any proposed transaction.

All data and assumptions regarding financial performance, including that used for financial modeling purposes, may differ from actual data or performance. Any estimates of market rents and/or projected rents that may be provided to a party do not necessarily mean that rents can be established at or increased to that level. Parties must evaluate any applicable contractual and governmental limitations as well as market conditions, vacancy factors and other issues in order to determine rents from or for the property. Legal questions should be discussed by the party with an attorney. Tax questions should be discussed by the party with a certified public accountant or tax attorney. Title questions should be discussed by the party with a title officer or attorney. Questions regarding the condition of the property and whether the property complies with applicable governmental requirements should be discussed by the party with appropriate engineers, architects, contractors, other consultants, and governmental agencies. All properties and services are marketed by Suntide Commercial Realty in compliance with all applicable fair housing and equal opportunity laws.

The calculations and data presented are deemed to be accurate, but not guaranteed. They are intended for the purpose of illustrative projections and analysis. The information provided is not intended to replace or serve as substitute for any legal, accounting, investment, real estate, tax or other professional advice, consultation or service. The user of this software should consult with a professional in the respective legal, accounting, tax or other professional area before making any decisions.

MATTHEW KLEIN, CCIM

Senior Vice President, Principal
(612) 382-3403
mklein@suntide.com
20186454, Minnesota

AMK PROPERTIES TEAM

Suntide Commercial Realty
2550 University Avenue W. #305-S
St. Paul, MN 55114
651-603-0321

MATTHEW KLEIN, CCIM

Senior Vice President, Principal
(612) 382-3403
mklein@suntide.com
20186454, Minnesota

