

# HALL OF FAME VILLAGE

RETAIL SPACE FOR LEASE | 2101 HALL OF FAME WAY NW, CANTON, OHIO 44708

102,500 Vehicles/Day



RETAIL I

RETAIL II

HALL  
OF FAME  
VILLAGE

CUSHMAN &  
WAKEFIELD  
**CRESCO**  
Real Estate





## Availability

T03	1,865 SF
T04	2,980 SF
T05	1,960 SF
T06	3,390 SF
T09	3,600 SF - 28,600 SF
T10	14,400 SF - 28,600 SF
T201	5,438 SF
T301	10,584 SF & 2,540 SF outdoor patio

**Available Space:** 1,865 SF - 28,600 SF

## Welcome to Hall of Fame Village!

- Select retail units available in the Fan Engagement Zone at Hall of Fame Village
- Centered around the iconic Pro Football Hall of Fame and state-of-the-art Tom Benson Hall of Fame Stadium
- Pedestrian-centric 100-acre campus hosts a wide variety of sporting events and concerts throughout the year
- Featuring football-themed rides, a Designated Outdoor Refreshment Area, and an eagerly anticipated indoor waterpark and on-site hotel both set to debut in 2026
- Exceptional visibility along I-77 (37.4+M vehicles annually) providing a prime location to showcase your business and attract a diverse audience





### GROWING FOOT TRAFFIC

3.1M+ campus visits in 2023, up almost 25% from 2022 & continuing to rise as key experiences open & new events are scheduled.



### NATIONAL SPOTLIGHT

Featured in 17 national broadcasts & media productions with over 50 hours of Nationally Televised events in 2023, the Village puts your brand in front of influential franchise owners and players, past and present.



### WIDESPREAD APPEAL

Ranked in the top 3% of leisure tourism destinations nationwide based on 2023 total attendance; 775k+ visits by guests who live 50 miles or more away.



### SPORTS AND MORE

Awarded 8th place in USA Today's 10 Best Attractions for Sports Fans. The 11 multi-purpose fields on campus, including 2 indoor turf fields, host more than 90 days of multi-day & large-scale events.

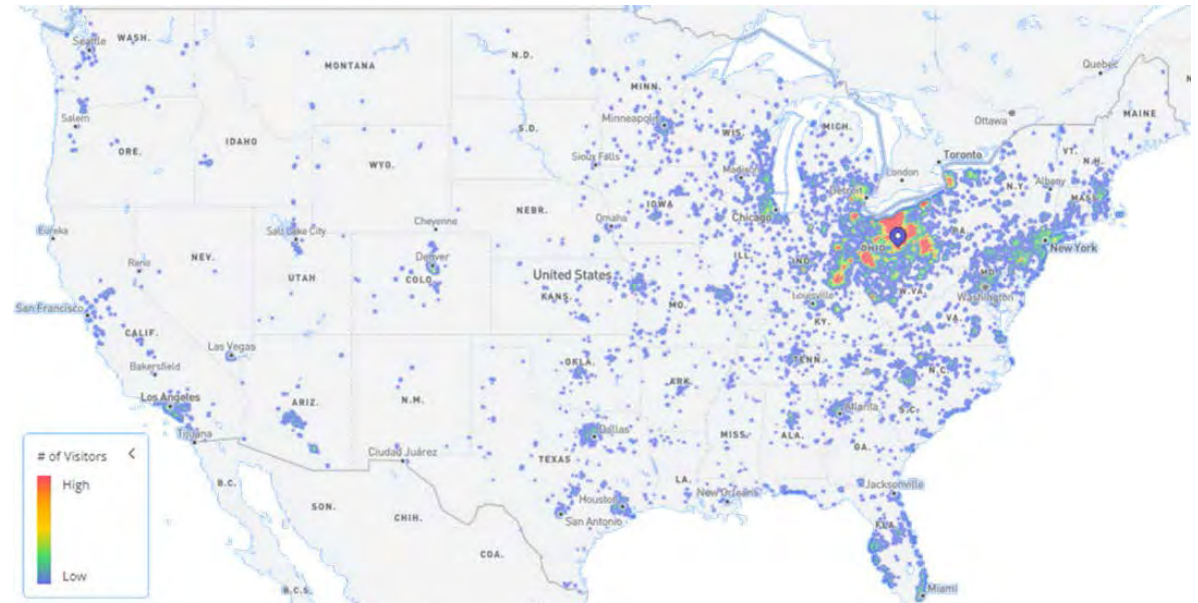


### YEAR-ROUND DRAW

Multiple points of interest to entice guests all year long, including one of the largest fabric domes in the country, only to be enhanced with opening of 120k SF indoor waterpark (instant capacity for 2,400 guests) and 180-room on-site hotel in 2026, further increasing attendance and flattening seasonality!

# The Village Advantage

## 2023 ATTENDANCE & CAMPUS VISITORS





# Campus Overview

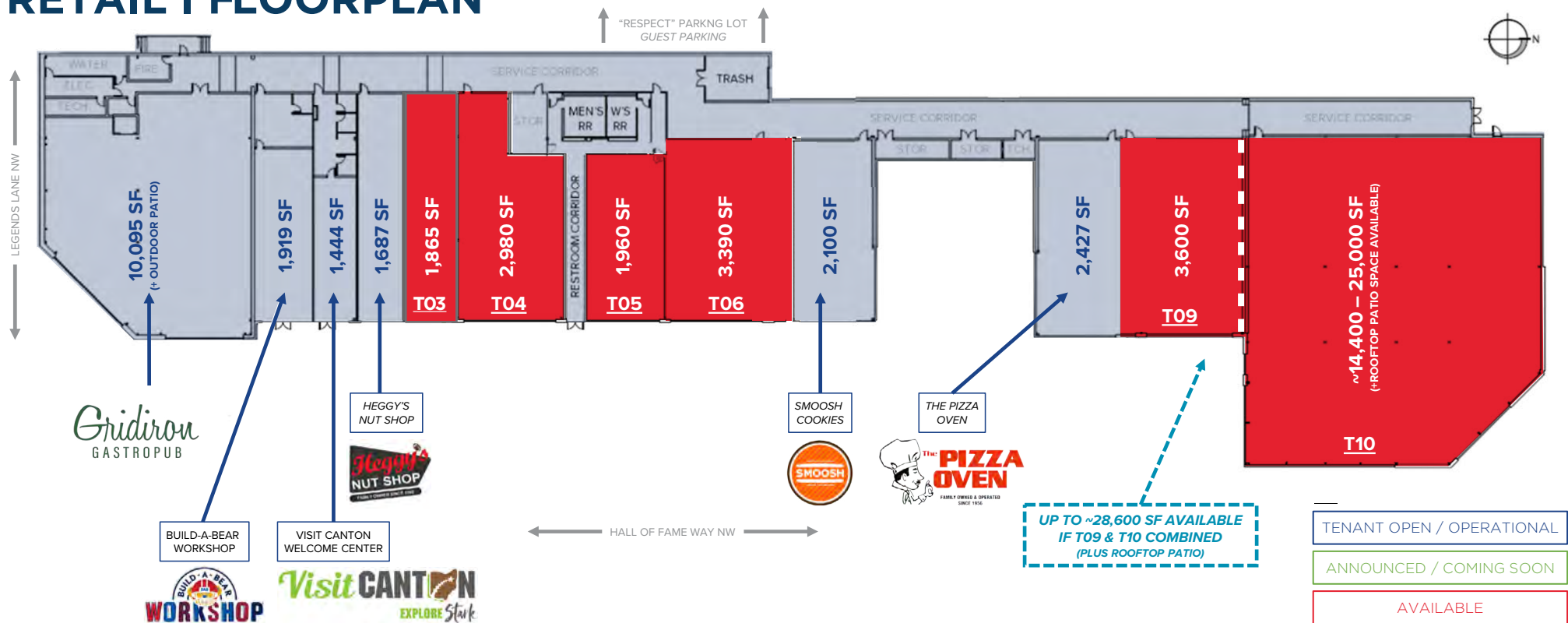




# Fan Engagement Zone



## RETAIL I FLOORPLAN





# Retail 2 Plan

## UPPER-LEVEL FLOORPLAN



10,584 SF  
AVAILABLE

T301

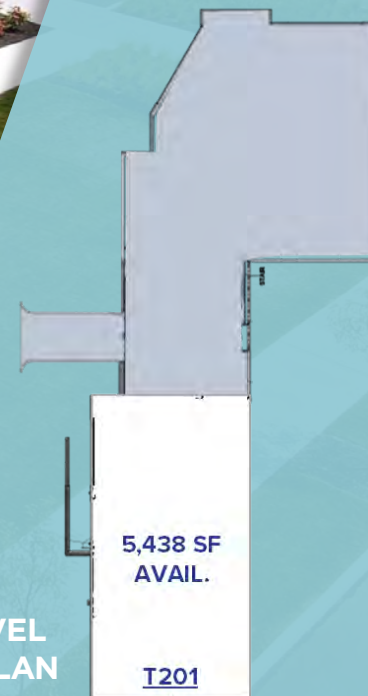
T301: 10,584 SF  
+ 2,540 SF PATIO

T201:  
5,438 SF

5,438 SF  
AVAIL.

T201

## MID-LEVEL FLOORPLAN









# Parking Map

HOFV controls 1,303 total spots, with potential to add an additional 839 spots = max 2,142 spots







**2101 HALL OF FAME WAY NW  
CANTON, OHIO 44708**

**RICO A. PIETRO, SIOR**  
Principal  
rpietro@crescorealestate.com  
+1 216 525 1473

**KIRSTEN PARATORE**  
Senior Associate  
kparatore@crescorealestate.com  
+1 216 525 1491

**ROBBY MARTINELLI**  
Associate  
rmartinelli@crescorealestate.com  
+1 216 232 4104

**AUSTIN LOVE**  
Associate  
alove@crescorealestate.com  
+1 216 525 1395

**Cushman & Wakefield | CRESCO**  
6100 Rockside Woods Blvd, Suite 200  
Cleveland, Ohio 44131  
[crescorealestate.com](http://crescorealestate.com)

©2024 Cushman & Wakefield. All rights reserved. The information contained in this communication is strictly confidential. This information has been obtained from sources believed to be reliable but has not been verified. NO WARRANTY OR REPRESENTATION, EXPRESS OR IMPLIED, IS MADE AS TO THE CONDITION OF THE PROPERTY (OR PROPERTIES) REFERENCED HEREIN OR AS TO THE ACCURACY OR COMPLETENESS OF THE INFORMATION CONTAINED HEREIN, AND SAME IS SUBMITTED SUBJECT TO ERRORS, OMISSIONS, CHANGE OF PRICE, RENTAL OR OTHER CONDITIONS, WITHDRAWAL WITHOUT NOTICE, AND TO ANY SPECIAL LISTING CONDITIONS IMPOSED BY THE PROPERTY OWNER(S). ANY PROJECTIONS, OPINIONS OR ESTIMATES ARE SUBJECT TO UNCERTAINTY AND DO NOT SIGNIFY CURRENT OR FUTURE PROPERTY PERFORMANCE.

**HALL  
OF FAME  
VILLAGE**

**CUSHMAN &  
WAKEFIELD**  
**CRESCO**  
Real Estate