

FOR SALE

113.55 ACRES
Development Land



52532 GLORY HILLS ROAD

Stony Plain, AB

Victor Moroz, Associate Broker
780.499.6400 | victor@royallepage.ca

Royal LePage Noralta Real Estate Inc, Brokerage
202 Main Street, Spruce Grove, AB
Independently Owned & Operated

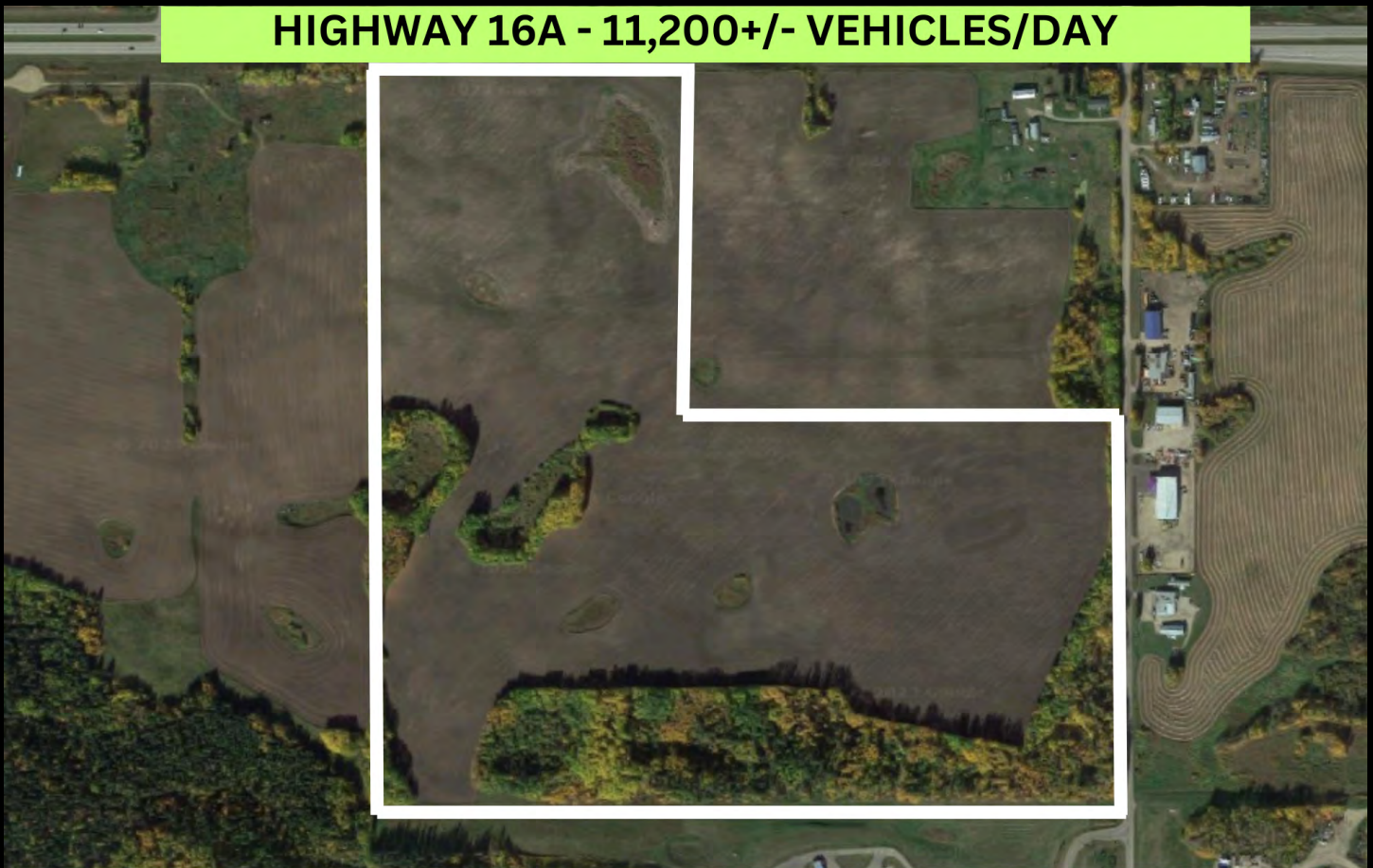
PROPERTY OVERVIEW

\$3,974,250.00

Property Features

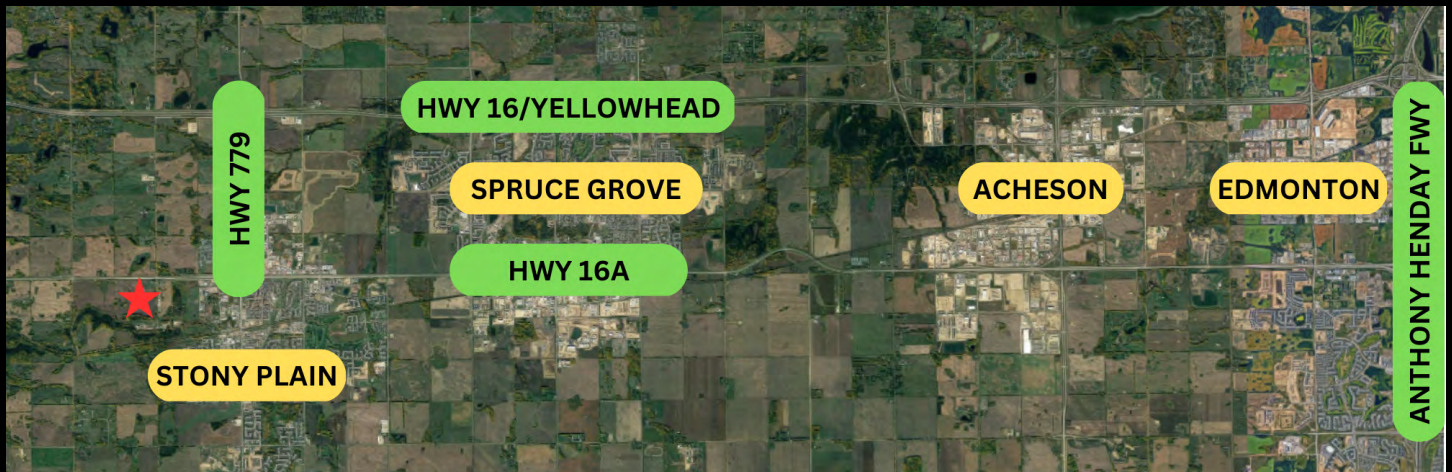
- Immediate Possession
- Highway 16A Frontage
- Great Land Assembly Opportunity
- Excellent Exposure
- Highway 16A - 11,200+/- Vehicles/day
- Municipal sewer line along south property line
- Zoned FD - Future Development

HIGHWAY 16A - 11,200+/- VEHICLES/DAY

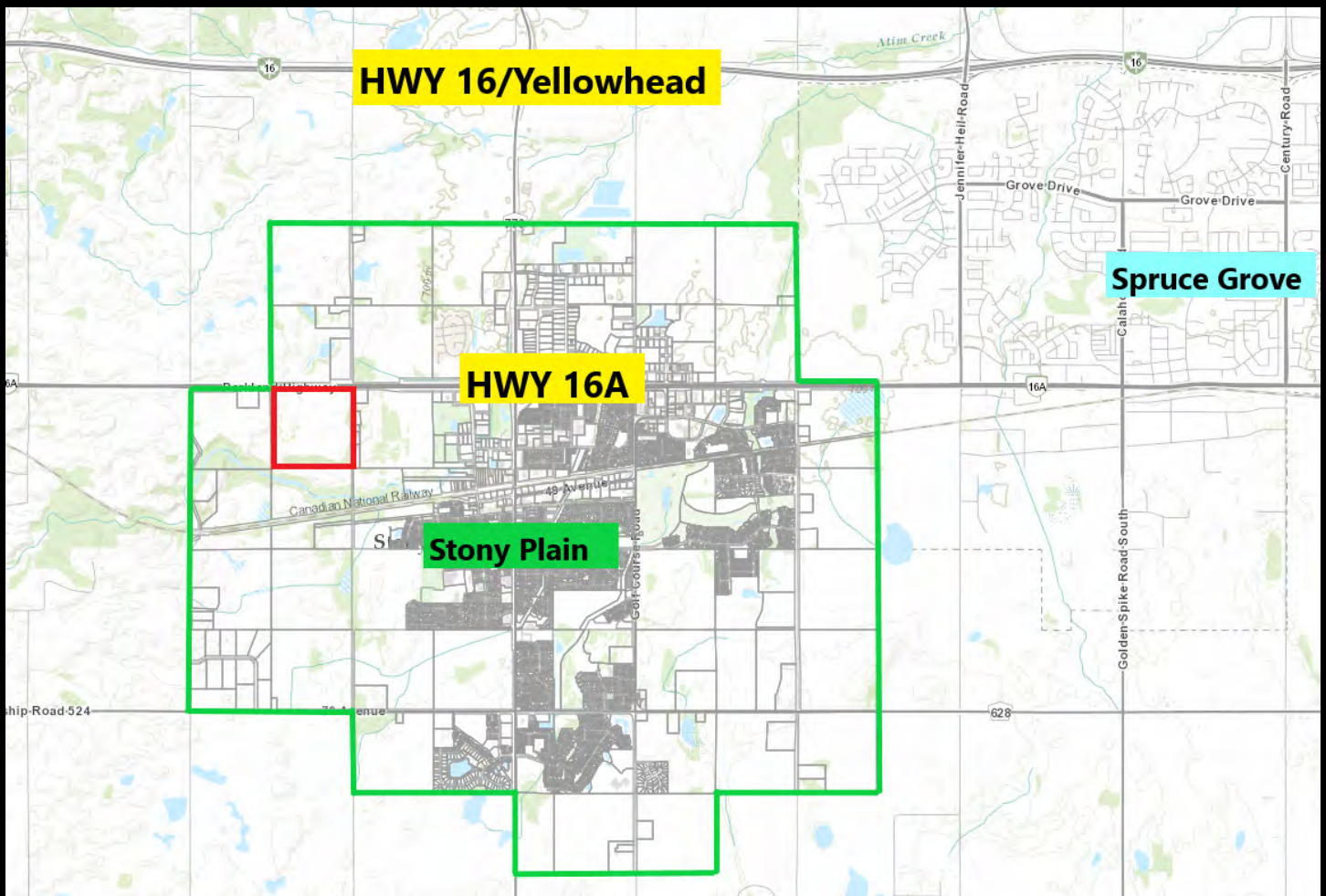


PROPERTY LINES APPROXIMATE - NOT GUARANTEED

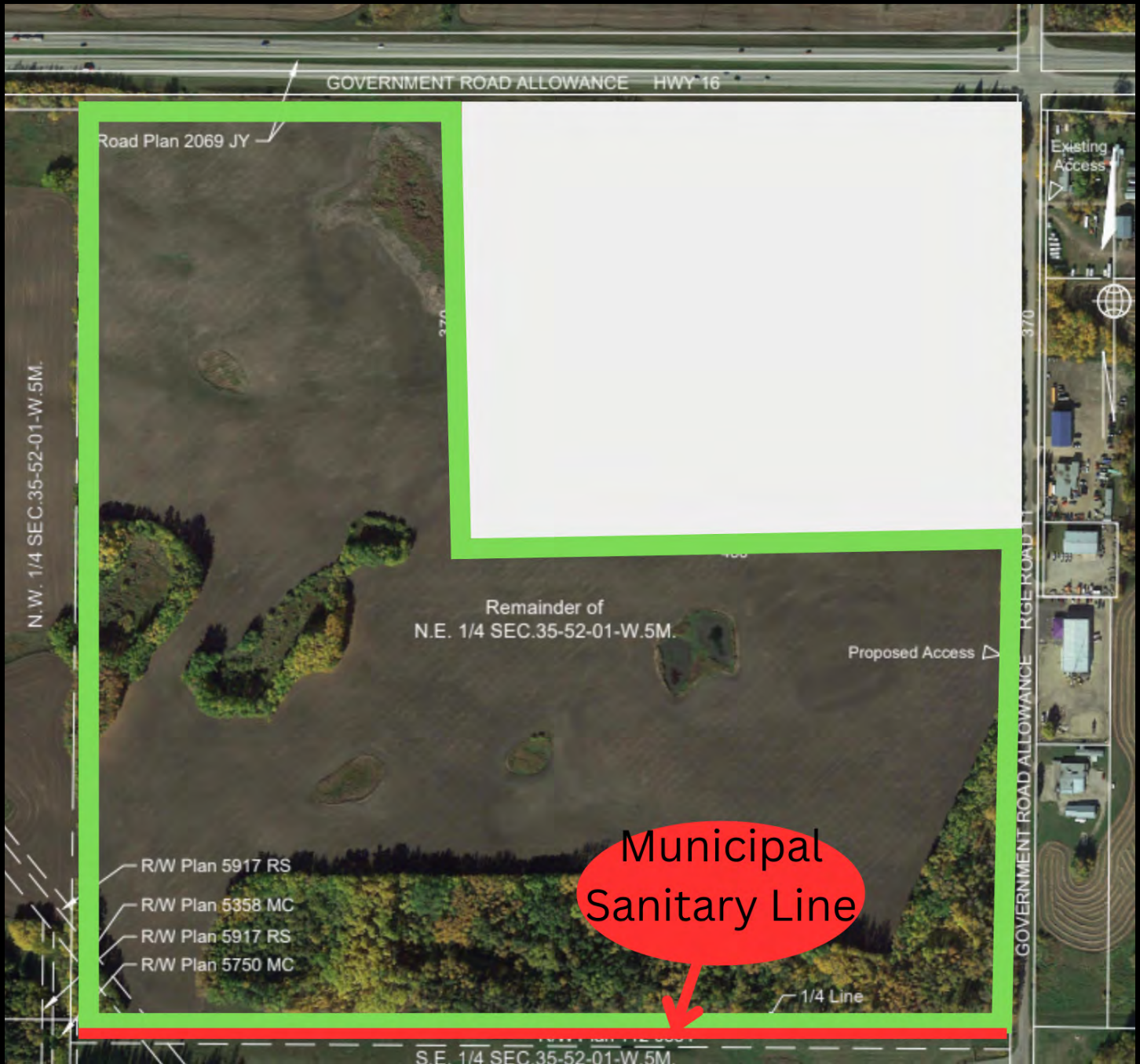
AERIAL MAP



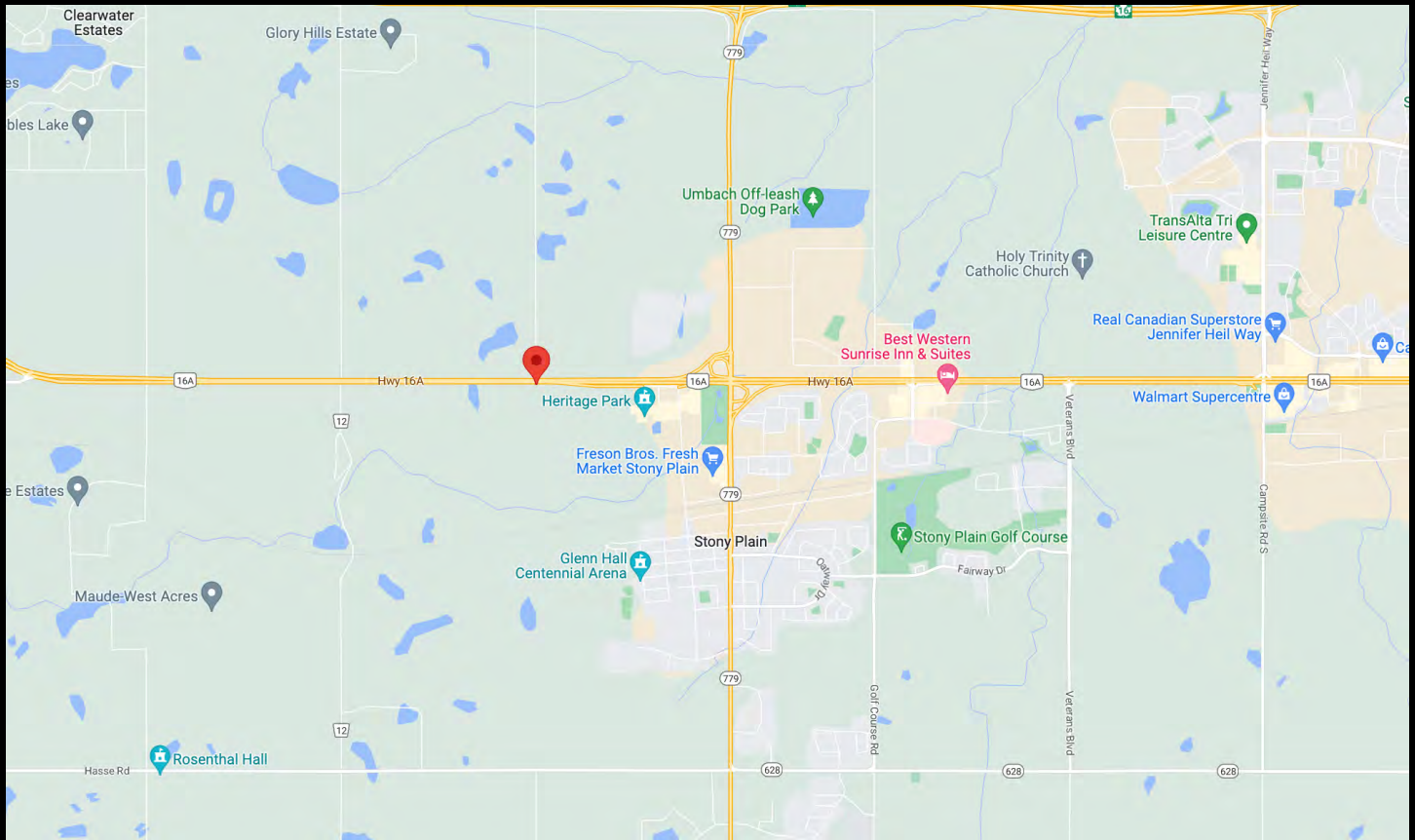
LOT MAP



LOT BOUNDARIES



LOCATION MAP



All offices are independently owned and operated, except those marked as indicated at rlp.ca/disclaimer. Not intended to solicit currently listed properties or buyers under contract. The above information is from sources believed reliable, however, no responsibility is assumed for the accuracy of this information. ©2022 Bridgemarq Real Estate Services Manager Limited. All rights reserved.