



# 85 E Main

Newark, OH 43055



## Offering Summary

Sale Price:	\$1,100,000
Building Size:	10,642 SF
Lot Size:	0.4 Acres
Year Built:	1890
Zoning:	Downtown Commercial District
APN:	054-187000-00.000

## Property Overview

This impressive 10,642± SF building, constructed in 1916 as Newark's main post office, blends historic character with modern versatility. Designed under James A. Wetmore, its classic architecture reflects early 20th-century civic pride. Most recently used as an event venue for private parties and church services, the property features spacious interiors and high ceilings, offering flexible options for continued event use or conversion to office or retail space. Included in the sale are D-1, D-2, D-3, and D-6 liquor licenses, providing additional opportunities for hospitality or entertainment operations while preserving a landmark piece of Newark's history.

## Property Highlights

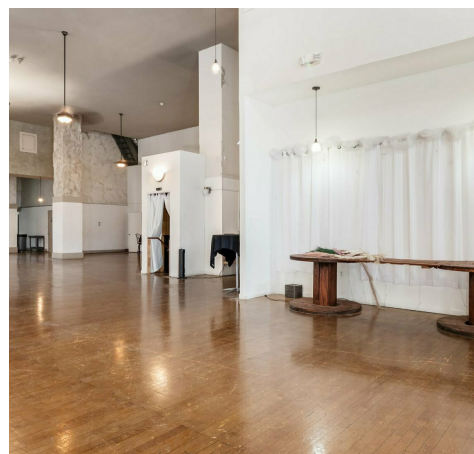
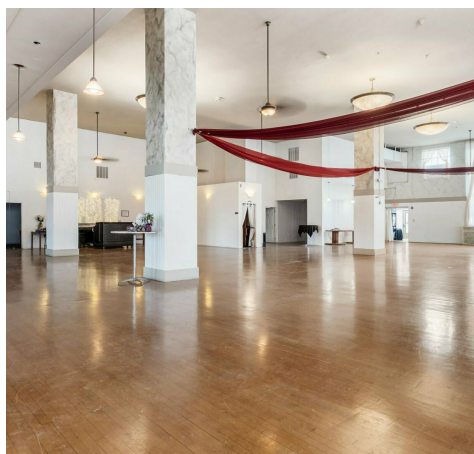
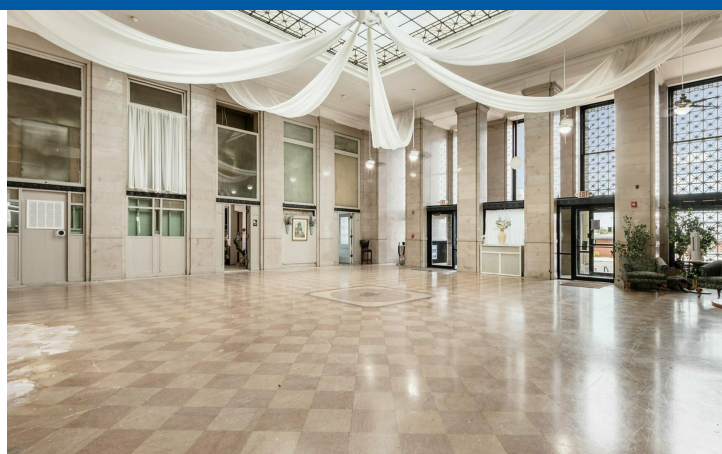
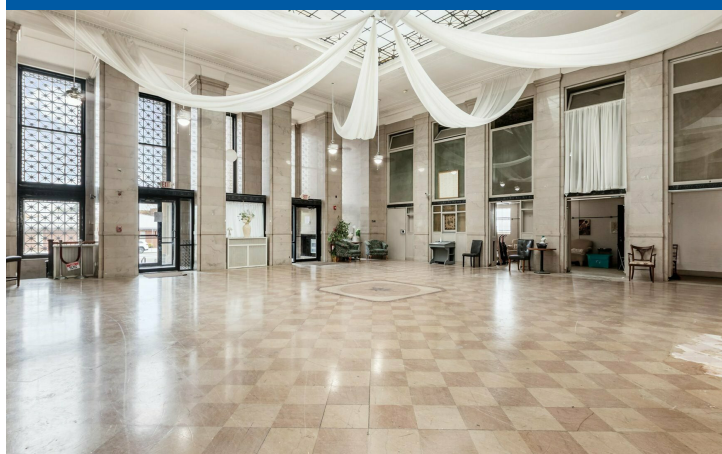
- 10,642± SF historic downtown building
- Prime Main Street location with excellent visibility
- Includes D-1, D-2, D-3 & D-6 liquor licenses





## 85 E Main

Newark, OH 43055

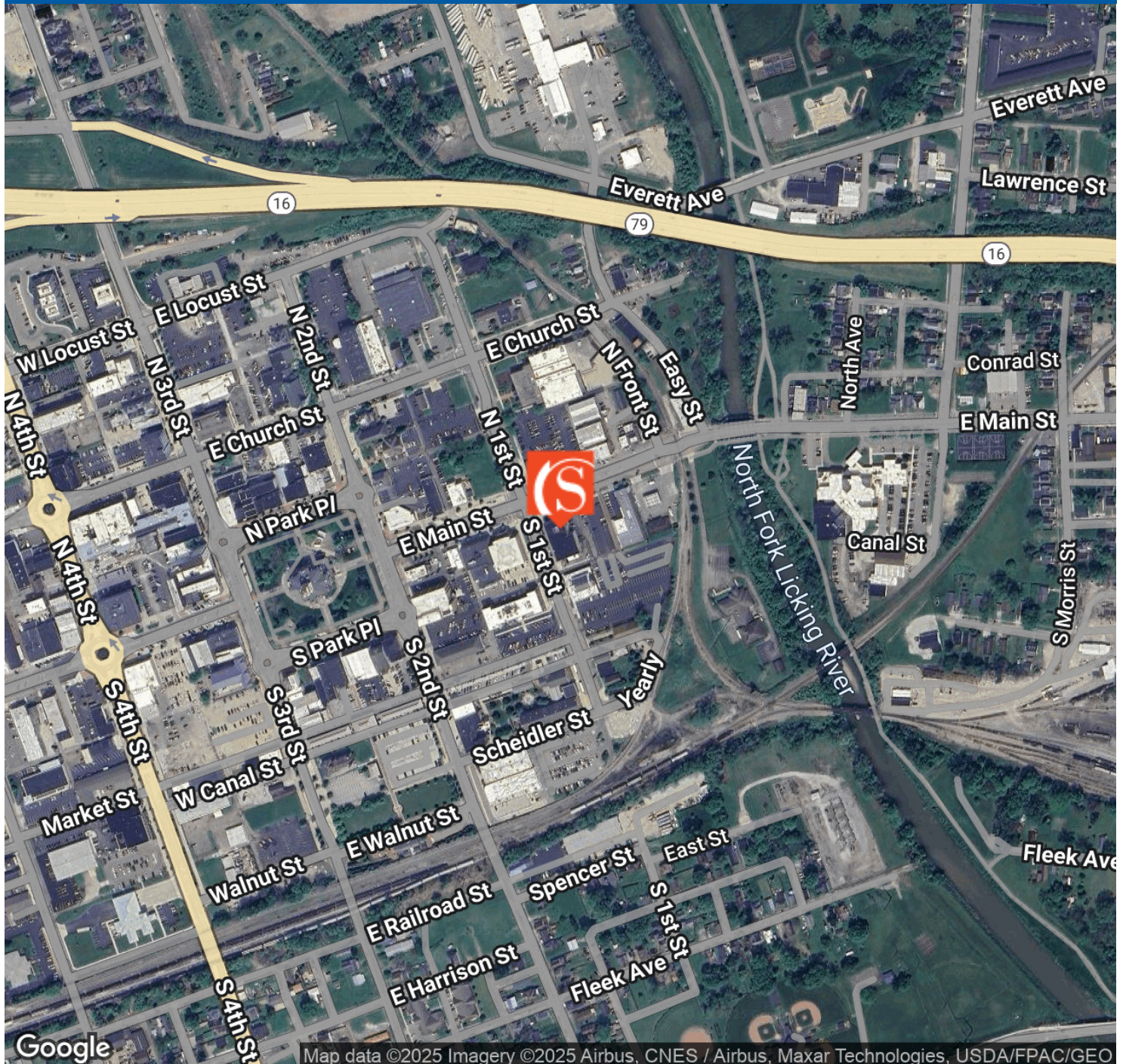






# 85 E Main

Newark, OH 43055

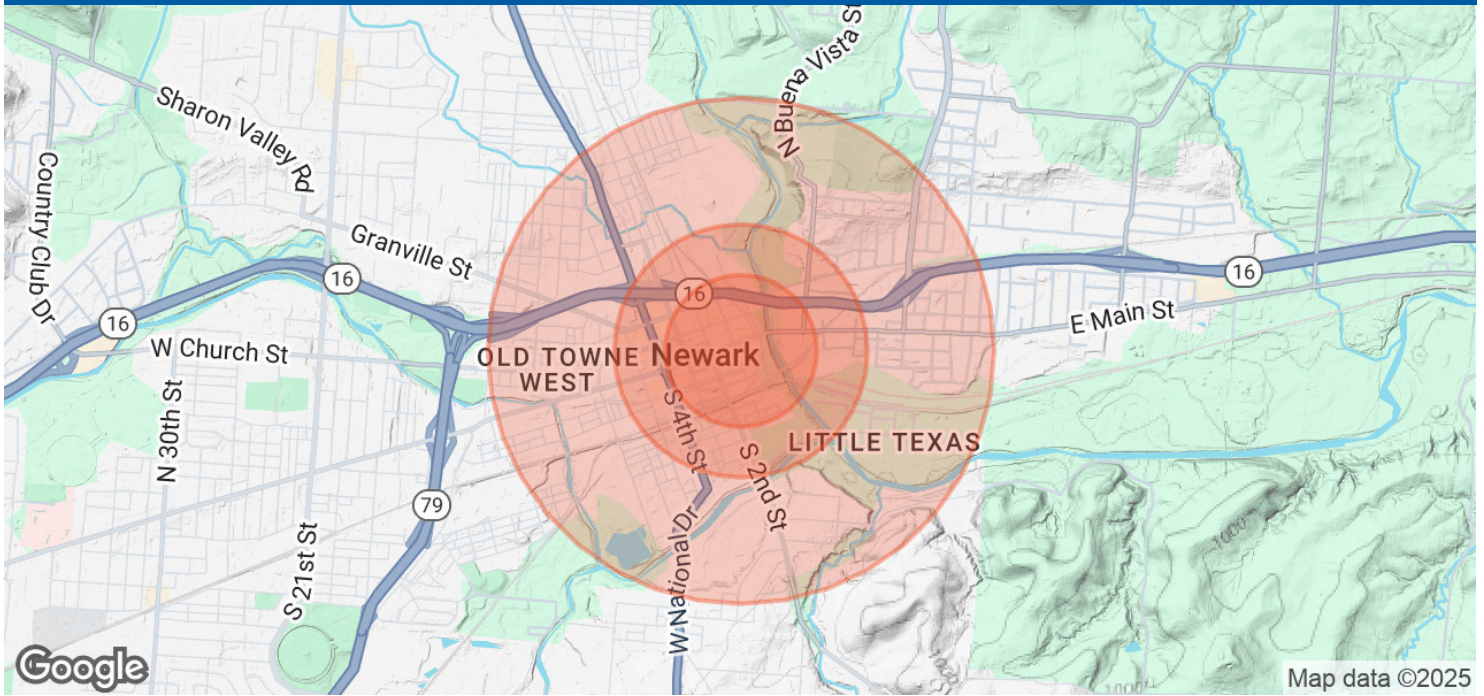






## 85 E Main

Newark, OH 43055



### Population

#### 0.3 Miles

#### 0.5 Miles

#### 1 Mile

Total Population	455	2,235	11,064
Average Age	39	38	37
Average Age (Male)	39	37	36
Average Age (Female)	40	39	38

### Households & Income

#### 0.3 Miles

#### 0.5 Miles

#### 1 Mile

Total Households	200	933	4,436
# of Persons per HH	2.3	2.4	2.5
Average HH Income	\$47,458	\$48,128	\$50,992
Average House Value	\$124,275	\$122,141	\$124,482

Demographics data derived from AlphaMap

