



FOR LEASE - 1,500 SF OFFICE SUITE

15 Reese Ave., Newtown Square PA



PROPERTY FEATURES

- 1,500 sf—2nd floor office suite
- Elevator served— 3 -story building
- Reception area, Large office, conference room, kitchenette and 2 restrooms
- HVAC controls in-suite
- 1/2 block off Newtown Street Road
- Building security system
- Zoned C-1 Commercial District
- Convenient to restaurants, shopping and many other amenities
- Gentile's Produce Market near by
- Easy access to major area highways

LEASE RATE - \$2,500/mo.
Plus electric & gas service
Janitorial service included in rent

CONTACT INFORMATION

For more information on this property or to schedule an appointment, please contact:

Tom Taylor

Senior Vice President

Direct: 610.524.8331

Cell: 610.952.4080

E-mail: ttaylor@briterealty.com

CELEBRATING

34

YEARS

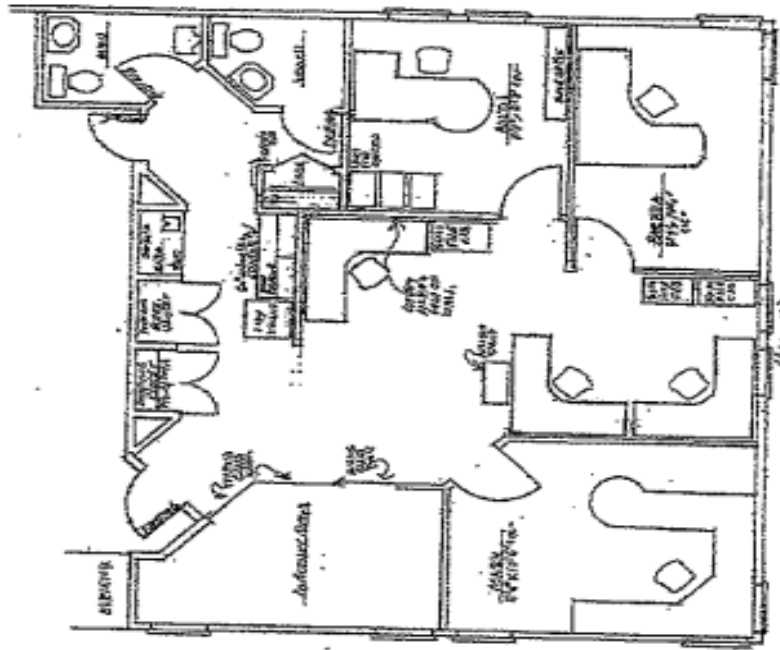


www.briterealty.com

610.524.8285

Information contained herein has been obtained from the owner of the property or from sources deemed reliable. We have no reason to doubt its accuracy, but make no warranty or representations. All information is submitted subject to errors, omissions, changes, withdrawal without notice and any special listing conditions of the owner.

Space plan - 2nd floor



Location Map



Tom Taylor
Senior Vice President

Direct: 610.524.8331
Cell: 610.952.4080
E-mail: ttaylor@brite Realty.com



677 Exton Commons, Exton PA 19341
610.524.8285