

9220 BASS LAKE ROAD, NEW HOPE, MN 55428

FOR LEASE



OFFERING SUMMARY

Lease Rate: \$16.00-\$18.00 SF/yr (MG)

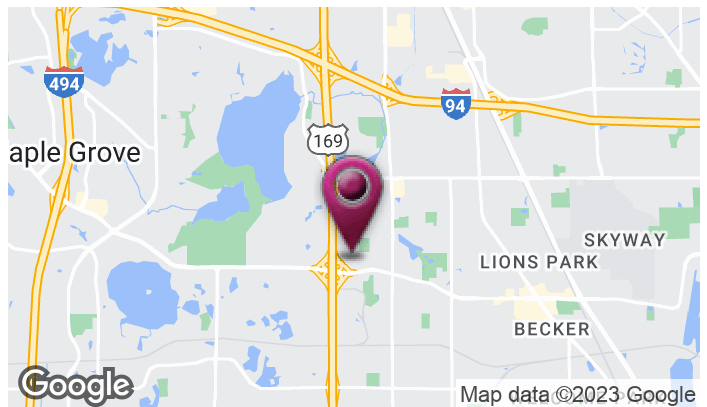
Lot Size: 6.98 Acres

Year Built: 1973

Building Size: 109,704 SF

Renovated: 2021

Zoning: RO



- Easy access to 169 & I-94
- Close to Plymouth, Maple Grove, Brooklyn Park, and Brooklyn Center
- Access to loading dock and freight elevator
- Free conference and board rooms
- High visibility area with 20,000+ daily traffic count

JGM PROPERTIES
1224 W. 96 St.
Bloomington, MN 55431
612.290.1037
www.JGMproperties.com

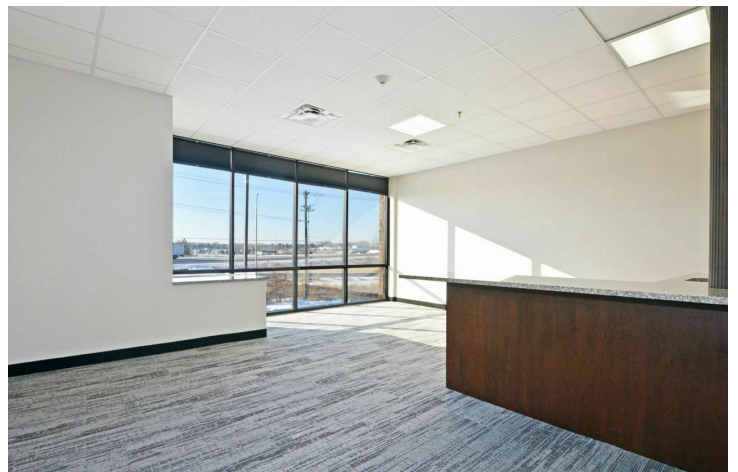
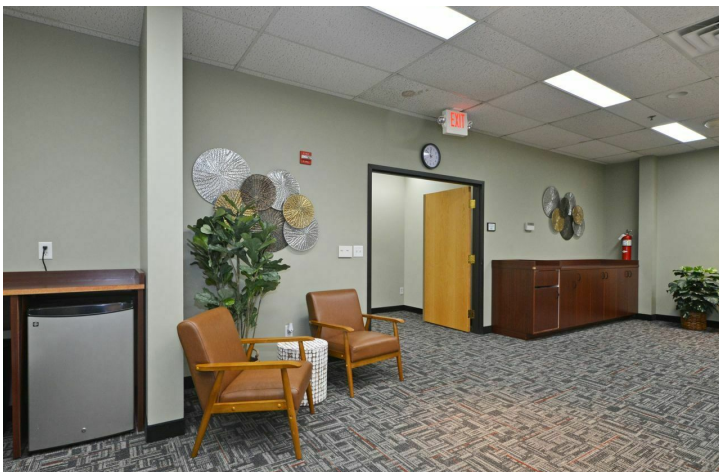
For More Information Contact:

ELI RUSSELL
612.290.1037

elir@jgmproperties.com

9220 BASS LAKE ROAD, NEW HOPE, MN 55428

FOR LEASE



JGM PROPERTIES
1224 W. 96 St.
Bloomington, MN 55431
612.290.1037
www.JGMproperties.com

For More Information Contact:

ELI RUSSELL
612.290.1037

elir@jgmproperties.com

9220 BASS LAKE ROAD, NEW HOPE, MN 55428

FOR LEASE



PROPERTY DESCRIPTION

Conveniently situated in New Hope off 169 and Bass Lake Road.

The property is located at 9220 Bass Lake Road, with close proximity to I-94.

Only a few miles in either direction will connect you to I-394 or I-694. Making this location easily accessible for your employees and clients.

This building offers available office spaces in the 150-10,000 SF size range.

The wide variety of size options available make this a versatile property for small, medium, or large businesses.

It also has a quasi-retail feel inside the building, making this location well suited for those with a customer facing business.

JGM PROPERTIES

1224 W. 96 St.
Bloomington, MN 55431
612.290.1037
www.JGMproperties.com

For More Information Contact:

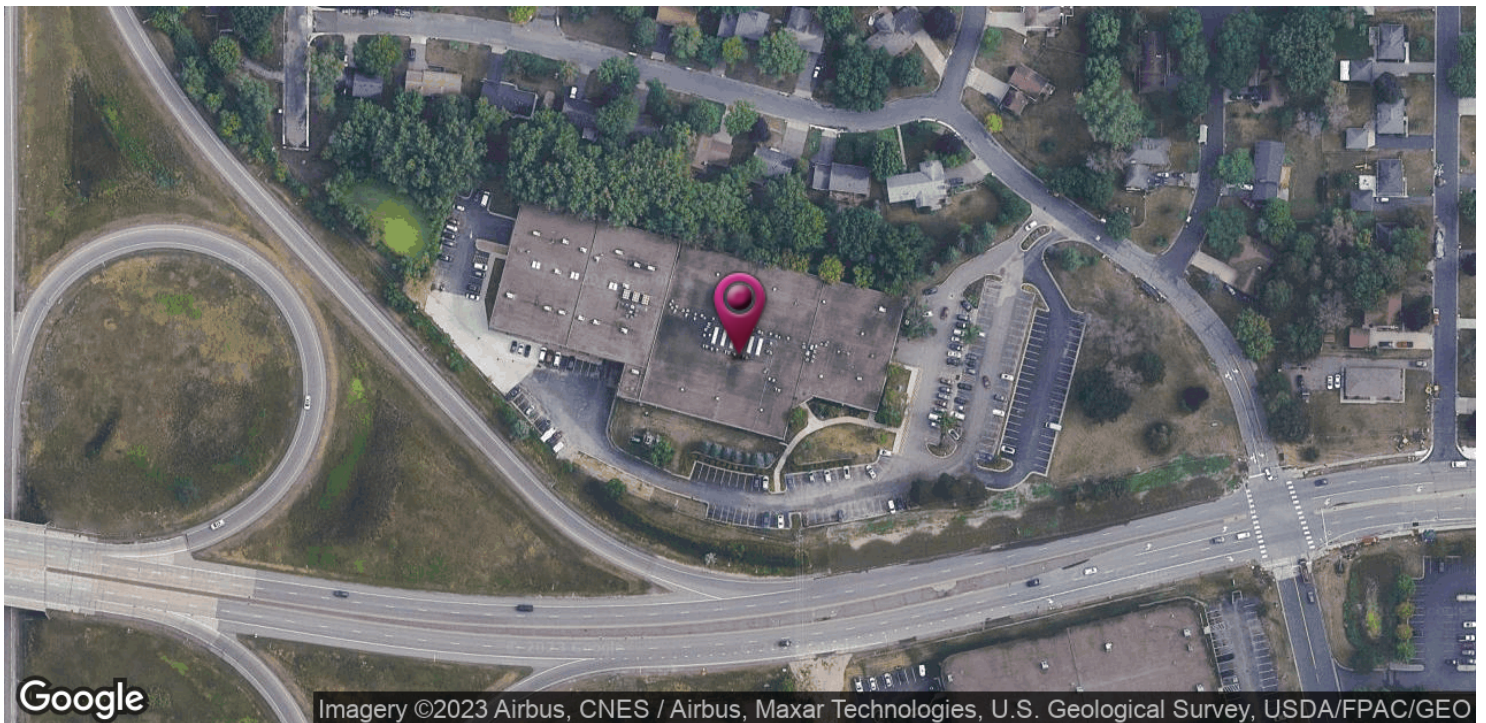
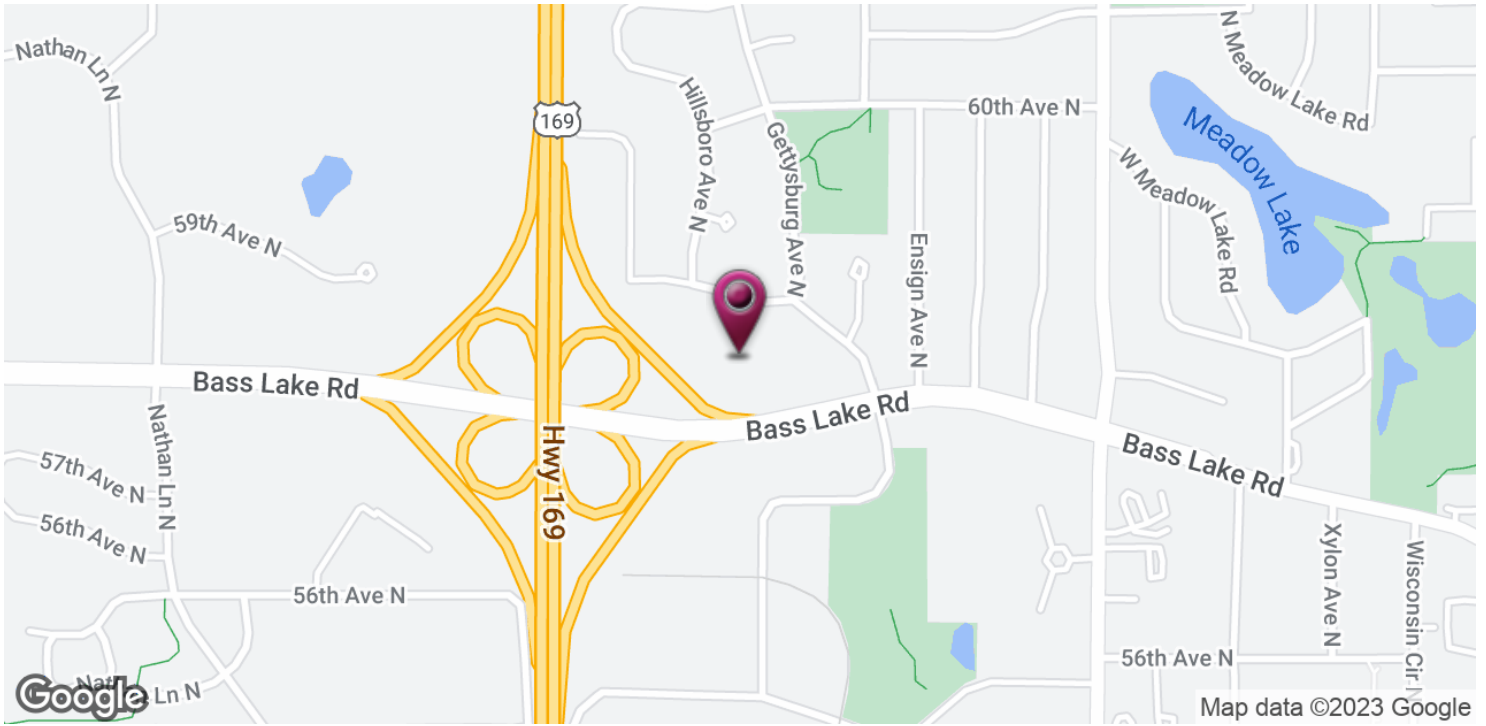
ELI RUSSELL

612.290.1037

elir@jgmproperties.com

9220 BASS LAKE ROAD, NEW HOPE, MN 55428

FOR LEASE



JGM PROPERTIES
1224 W. 96 St.
Bloomington, MN 55431
612.290.1037
www.JGMproperties.com

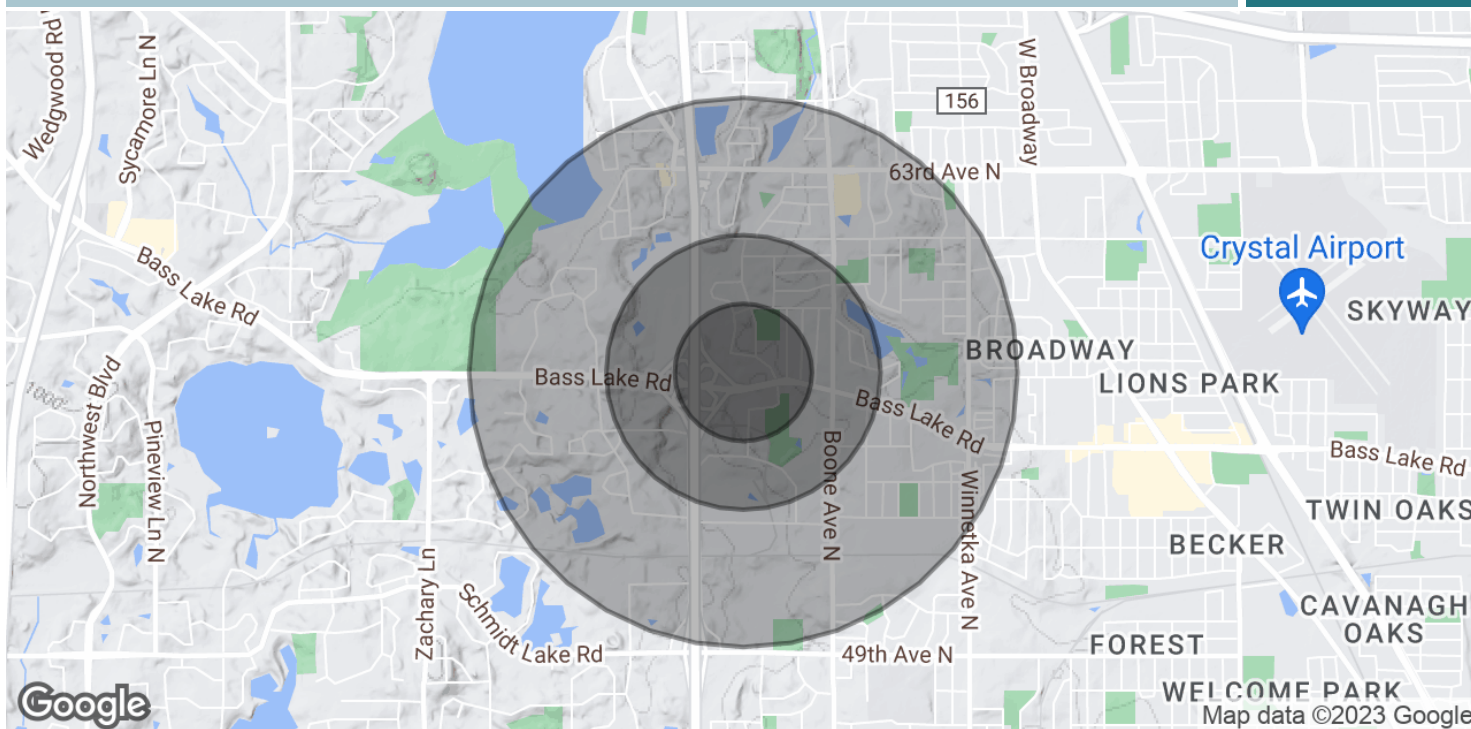
For More Information Contact:

ELI RUSSELL
612.290.1037

elir@jgmproperties.com

9220 BASS LAKE ROAD, NEW HOPE, MN 55428

FOR LEASE



POPULATION

0.25 MILES

0.5 MILES

1 MILE

Total Population	699	2,626	10,371
Average Age	39.2	41.5	44.3
Average Age (Male)	39.7	41.9	44.2
Average Age (Female)	37.0	39.8	43.5

HOUSEHOLDS & INCOME

0.25 MILES

0.5 MILES

1 MILE

Total Households	296	1,141	4,571
# of Persons per HH	2.4	2.3	2.3
Average HH Income	\$84,171	\$86,923	\$79,526
Average House Value	\$204,253	\$221,251	\$236,103

* Demographic data derived from 2020 ACS - US Census

JGM PROPERTIES

1224 W. 96 St.
Bloomington, MN 55431
612.290.1037
www.JGMproperties.com

For More Information Contact:

ELI RUSSELL
612.290.1037

elir@jgmproperties.com