

FLEX FOR LEASE 301 - 303 NAJOLES ROAD

Millersville, MD 21108

Available: 5,625 SF

LEE & ASSOCIATES
COMMERCIAL REAL ESTATE SERVICES



LISTING DATA

AVAILABLE SF: 5,625 SF

PROPERTY INFORMATION

COUNTY: Anne Arundel

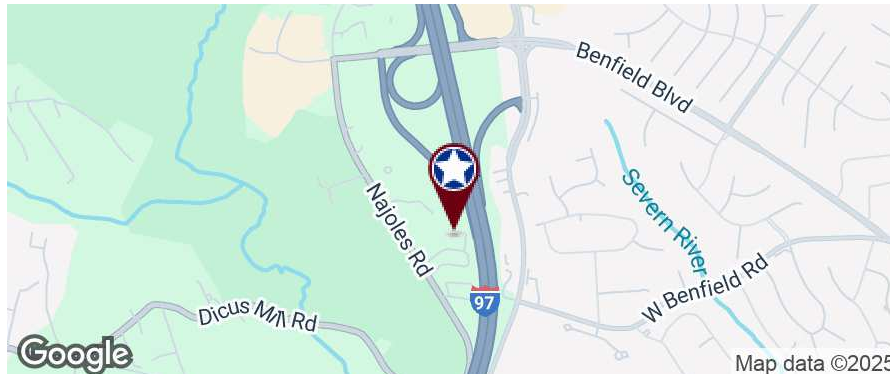
BUILDING DATA

YEAR BUILT: 1989

ZONING: W1

PROPERTY HIGHLIGHTS

- Located in Millersville off of Najoles Road
- Immediate access to I-97
- Close proximity to RT. 32, RT. 3 and BWI
- New roof 2020



AVAILABLE SPACES

SPACE	LEASE RATE	SIZE (SF)
301 Najoles	\$14.00 SF/yr	5,625 SF

Kate Jordan, SIOR
Principal
410.336.5314
kjordan@lee-associates.com

Marley Black, SIOR
Principal
443.741.4050
mblack@lee-associates.com

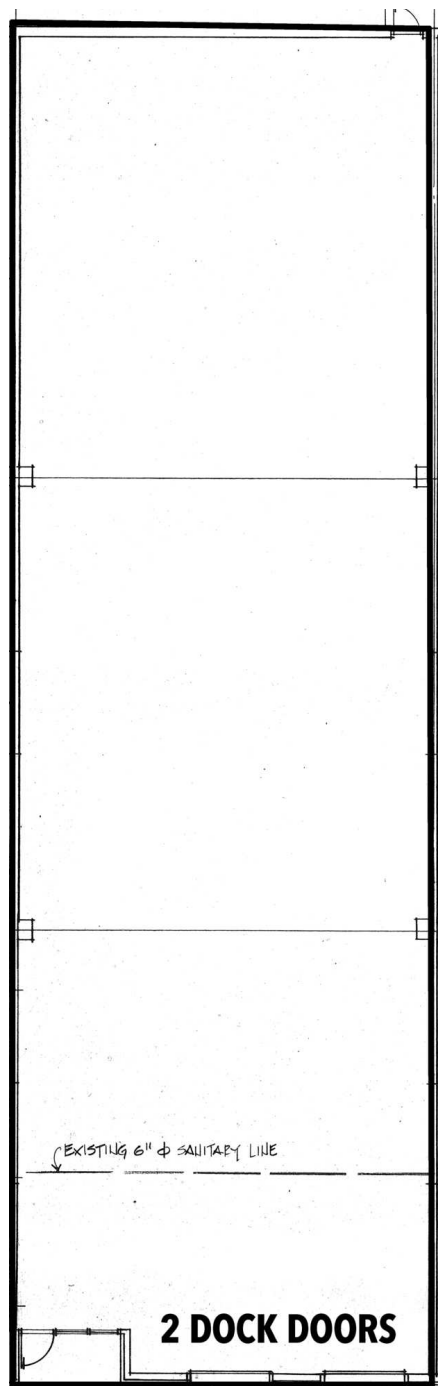
Samantha Eckels
Associate
443.741.4047
seckels@lee-associates.com

All information furnished regarding property for sale, rental or financing is from sources deemed reliable, but no warranty or representation is made to the accuracy thereof and same is submitted to errors, omissions, change of price, rental or other conditions prior to sale, lease or financing or withdrawal without notice. No liability of any kind is to be imposed on the broker herein.

FLEX FOR LEASE
301 - 303 NAJOLES ROAD

Millersville, MD 21108

Available: 5,625 SF



301 Najoles - Suite 205 | 5,625 SF | 2 Docks | Shell Space | 18' Clear

Kate Jordan, SIOR
Principal
410.336.5314
kjordan@lee-associates.com

Marley Black, SIOR
Principal
443.741.4050
mblack@lee-associates.com

Samantha Eckels
Associate
443.741.4047
seckels@lee-associates.com

All information furnished regarding property for sale, rental or financing is from sources deemed reliable, but no warranty or representation is made to the accuracy thereof and same is submitted to errors, omissions, change of price, rental or other conditions prior to sale, lease or financing or withdrawal without notice. No liability of any kind is to be imposed on the broker herein.