



***Historic Steam Plant / Seehorn Lang Building***  
***159 S. Lincoln Street, Spokane, WA***

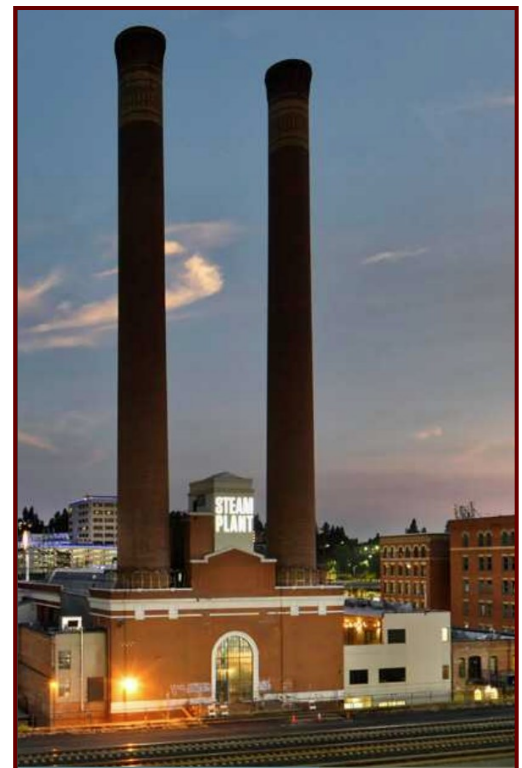
**Highlights:**

- ◆ Historic Spokane landmark in the heart of Downtown
- ◆ Iconic twin smokestacks tower 225 feet high
- ◆ Unique mix of restaurant, brewery, event space, retail and office
- ◆ 31,935 +/- sq. ft. parking lot adjacent to building
- ◆ Zoned Downtown General (DTG)
- ◆ Large daytime population

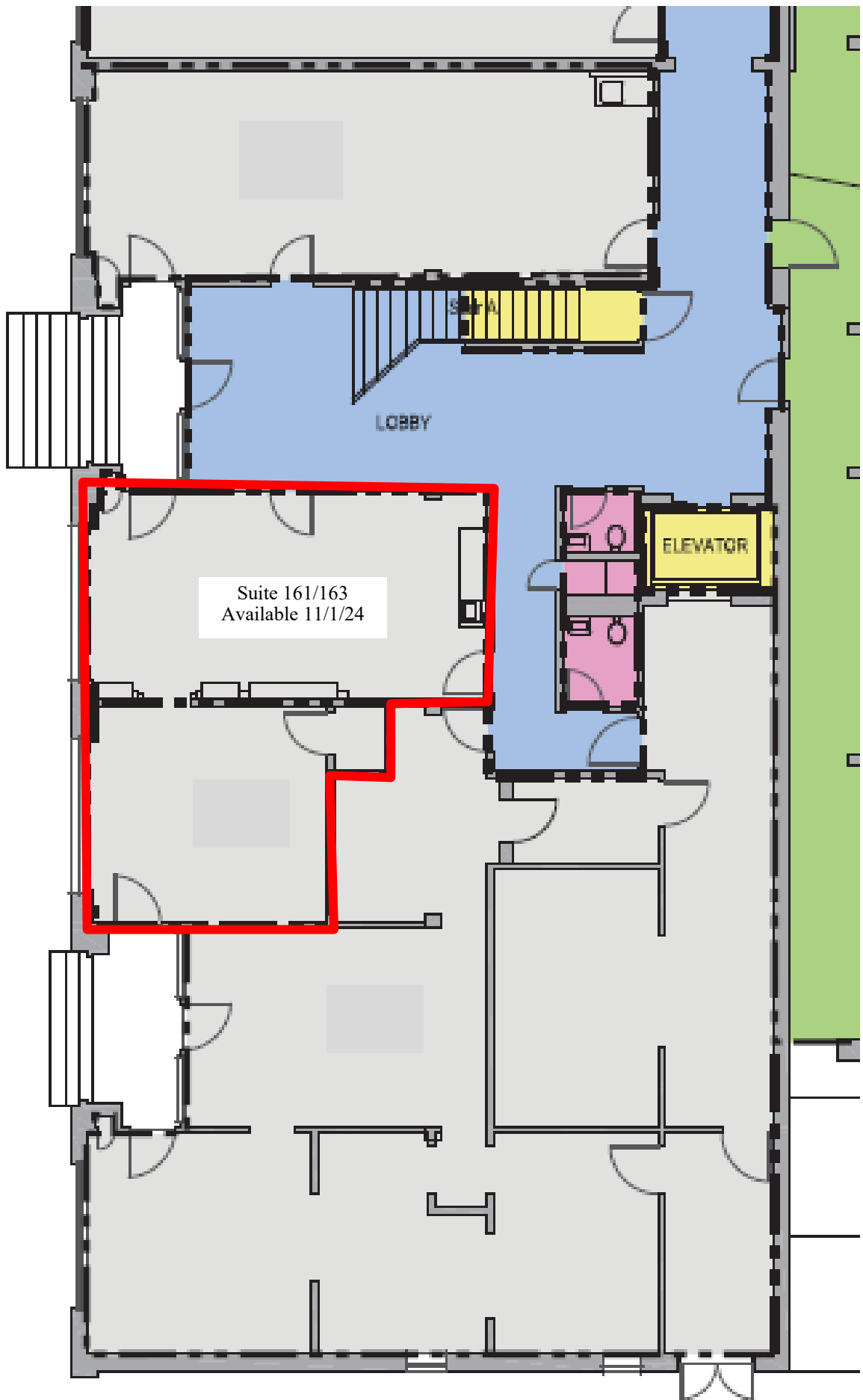
**Available For Lease:**

Suite 161 - 670 +/- Sq. Ft.

Suite 211 - 2,679 +/- Sq. Ft.

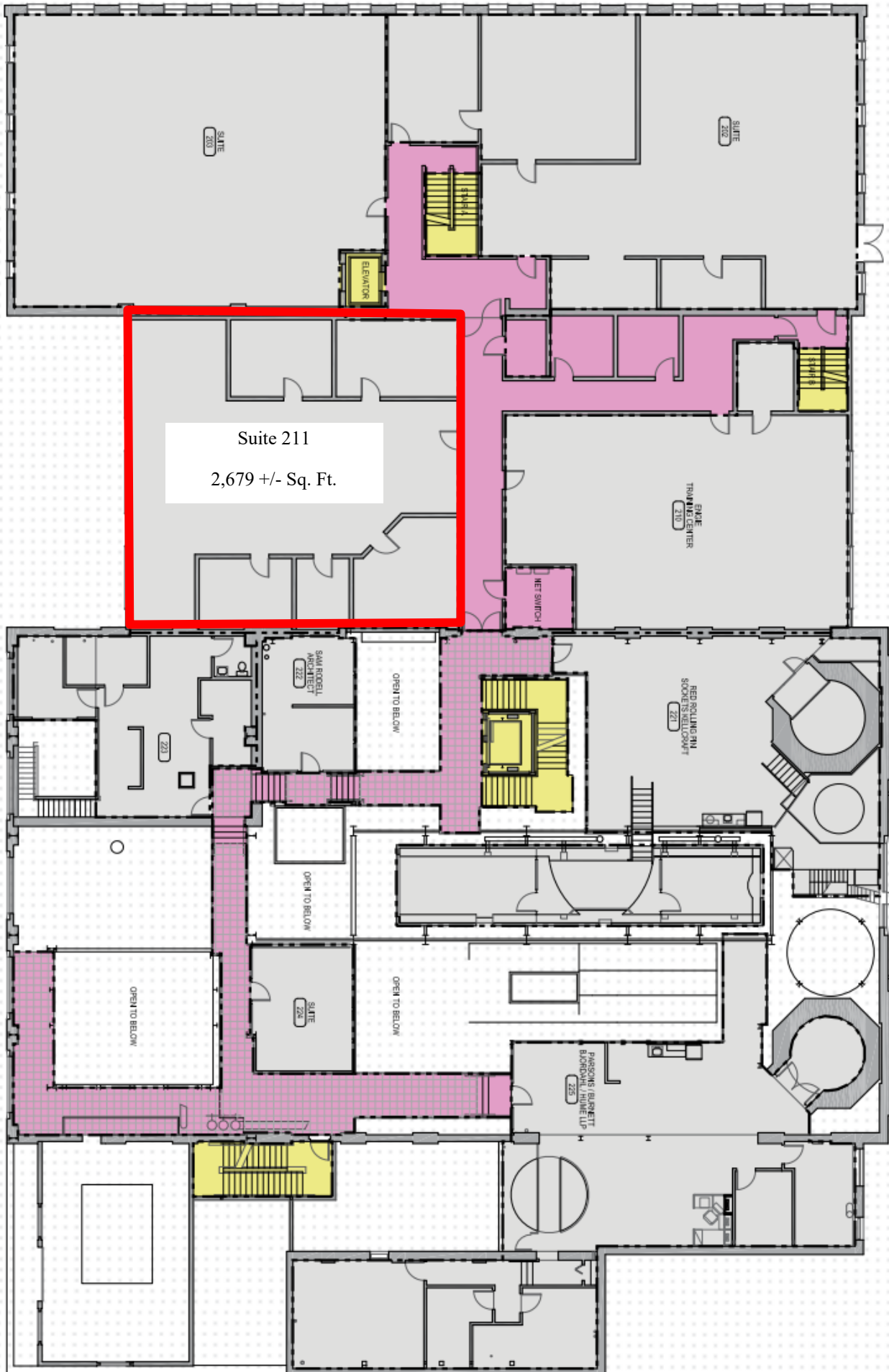


**GVD COMMERCIAL PROPERTIES, INC.**  
**KRISTIE JONES (509) 534-5805**



Suite 161/163  
Available 11/1/24





Suite 211  
2,679 +/- Sq. Ft.

SUITE 200

SUITE 202

ELEVATOR

SPACE TRAINING CENTER 210

NET SWITCH

SAUL ROBBEL ARCHITECT 222

OPEN TO BELOW

RED ROLLING RIN SCOUTS BELLROOM 221

223

OPEN TO BELOW

SUITE 224

OPEN TO BELOW

OPEN TO BELOW

PANSONG BLANETT BUSHNELL PARTNERS LLP 225

