

# FOR SALE / LEASE

## LEDUC INDUSTRIAL CONDO

#105/#106, 7609 Sparrow Drive, Leduc, AB



### HIGHLIGHTS

- 1,905 - 3,864 sq ft ± drive-thru industrial condo located in Leduc Business Park
- Fully paved marshalling area
- Features 1 office and 2 washrooms
- Prime visibility to Sparrow Drive
- Excellent access to major thoroughfares including Airport Road & QE II

### CONTACT

#### ERIC STANG

Partner, Associate  
C 780.667.9605  
eric@royalparkrealty.com

#### JOANNA LEWIS

Associate  
C 780.999.9642  
joanna@royalparkrealty.com



ROYAL PARK  
REALTY™

T 780.448.0800 F 780.426.3007  
#201, 9038 51 Avenue NW Edmonton, AB T6E 5X4

royalparkrealty.com

## PROPERTY DETAILS

MUNICIPAL ADDRESS	#105/#106, 7609 Sparrow Drive, Leduc, AB
LEGAL DESCRIPTION	Condo Plan: 1221300 Units: 9 & 10
ZONING	IBL (Business Light Industrial)
TYPE OF SPACE	Industrial Condo
YEAR BUILT	2012
SIZE	1,905 - 3,864 sq ft ±
GRADE LOADING	(3) 12' x 14' (drive-thru)
CEILING HEIGHT	18' 7" - 26' 10"
HVAC	Forced air in office, radiant in shop
LIGHTING	T5
POWER	225 Amp, 240, 120/208 Volt 3 Phase
DRAINAGE	Trench and dual compartment sump
PARKING	Scramble

## FINANCIALS

SALE PRICE	\$447,675 - \$909,000 (\$235.00/sq ft)
CONDO FEES	\$607.27/month (2024)
PROPERTY TAXES	\$10,051.44/annum (2024)
LEASE RATE	\$15.00/sq ft
OP COSTS	\$4.80/sq ft
POSSESSION	Immediate

### Additional Information

- Direct frontage to Sparrow Drive
- Storage mezzanine in warehouse
- Demisable into two separate units



ROYAL PARK  
REALTY™

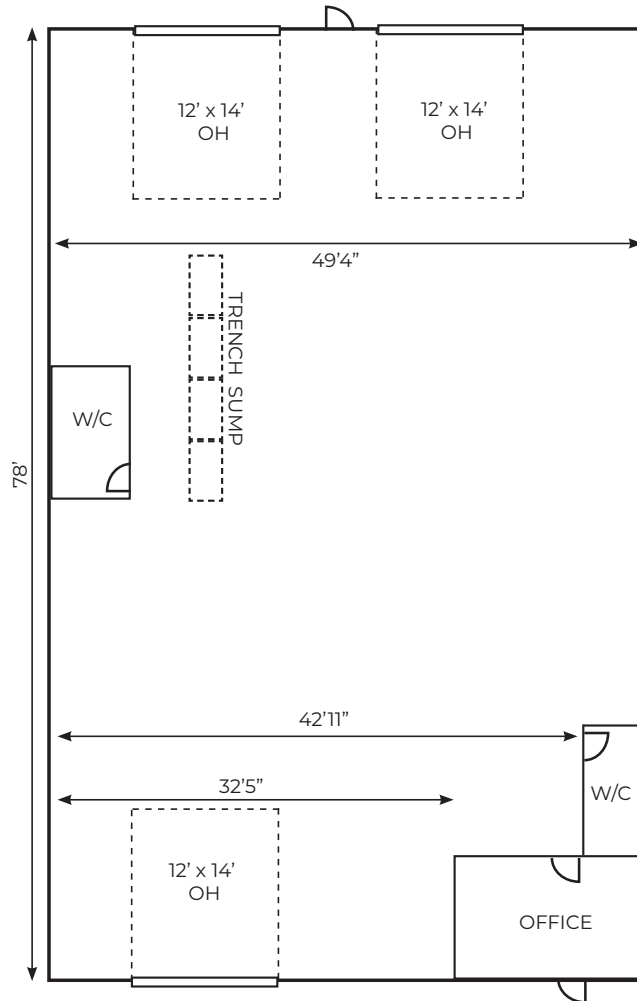
T 780.448.0800 F 780.426.3007  
#201, 9038 51 Avenue NW Edmonton, AB T6E 5X4

royalparkrealty.com



# Leduc Industrial Condo For Sale/Lease | #105/106, 7609 Sparrow Drive

Inside measurements, for illustration purposes only



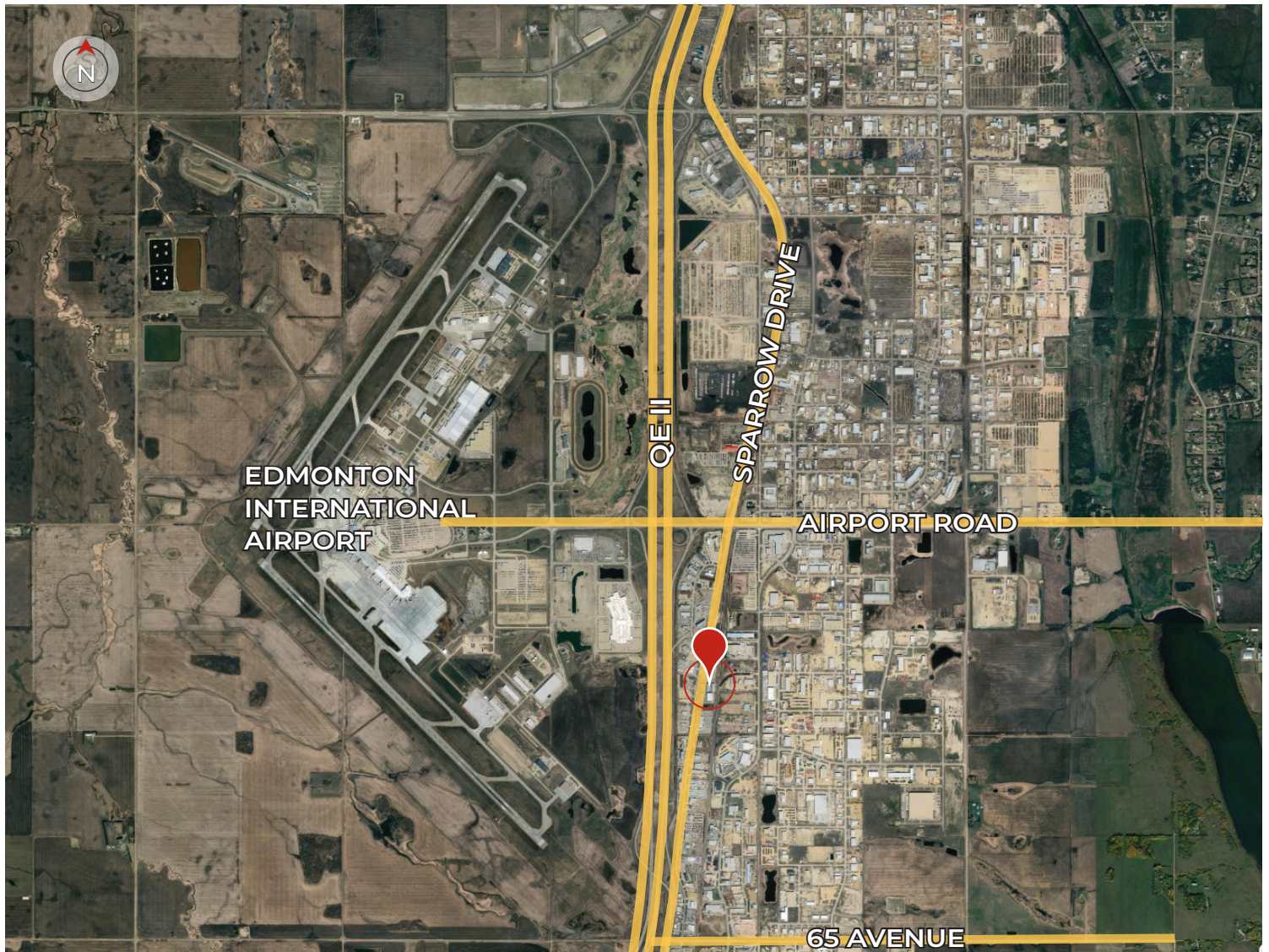
ROYAL PARK  
REALTY™

T 780.448.0800 F 780.426.3007  
#201, 9038 51 Avenue NW Edmonton, AB T6E 5X4

[royalparkrealty.com](http://royalparkrealty.com)



# Leduc Industrial Condo For Sale/Lease | #105/106, 7609 Sparrow Drive



Quality Based on **Results**, Not Promises.



**ERIC STANG**  
Partner, Associate  
C 780.667.9605  
[eric@royalparkrealty.com](mailto:eric@royalparkrealty.com)



**JOANNA LEWIS**  
Associate  
C 780.999.9642  
[joanna@royalparkrealty.com](mailto:joanna@royalparkrealty.com)



**ROYAL PARK  
REALTY™**

T 780.448.0800 F 780.426.3007  
#201, 9038 51 Avenue NW Edmonton, AB T6E 5X4

[royalparkrealty.com](http://royalparkrealty.com)