

# 2000

## COLLINS AVE

*Miami Beach*

2000 Collins Ave. Miami Beach, FL 33139



**2,977 SF/  
8,105 SF**

**AVAILABLE  
Retail Spaces**

**NEWMARK**



# Executive Overview

- Prime Retail Opportunity at 2000 Collins Avenue, Miami Beach
- Situated in the heart of Miami Beach's vibrant Collins Park neighborhood, 2000 Collins Avenue offers an exceptional retail leasing opportunity. The upcoming 11,082 square-feet of vacancy is part of a mixed-use condominium building that includes the Boulan Hotel and a multi-level parking garage with 407 spaces. The property boasts frontage on Collins Avenue, Liberty Avenue, and 21st Street, ensuring maximum visibility and foot traffic.
- Property Features:



#### SIZE & LAYOUT

2,977 SF of versatile retail space suitable for various uses such as boutique retail, café, or service-oriented businesses and 8,105 SF suitable for nightclub space.



#### PRIME LOCATION

High visibility frontage on 20<sup>th</sup> Street. One block from the beach and within walking distance to Lincoln Road, the Miami Beach Convention Center, and the 1 Hotel.



#### HIGH FOOT TRAFFIC

Located in a bustling area frequented by tourists and locals, with co-tenants like Joe & the Juice, Orange Blossom, CVS, and Sweet Liberty.



#### ACCESSIBILITY

Easy access to major highways and public transportation enhancing customer convenience.



# Property Overview



1 HOTEL  
South beach

W  
SOUTH BEACH

Miami  
KITH

THE SETAI  
MIAMI BEACH

COLLINS PARK

THE  
BASS

JOE & THE JUICE

BOULAN  
SOUTH BEACH

CVS  
pharmacy

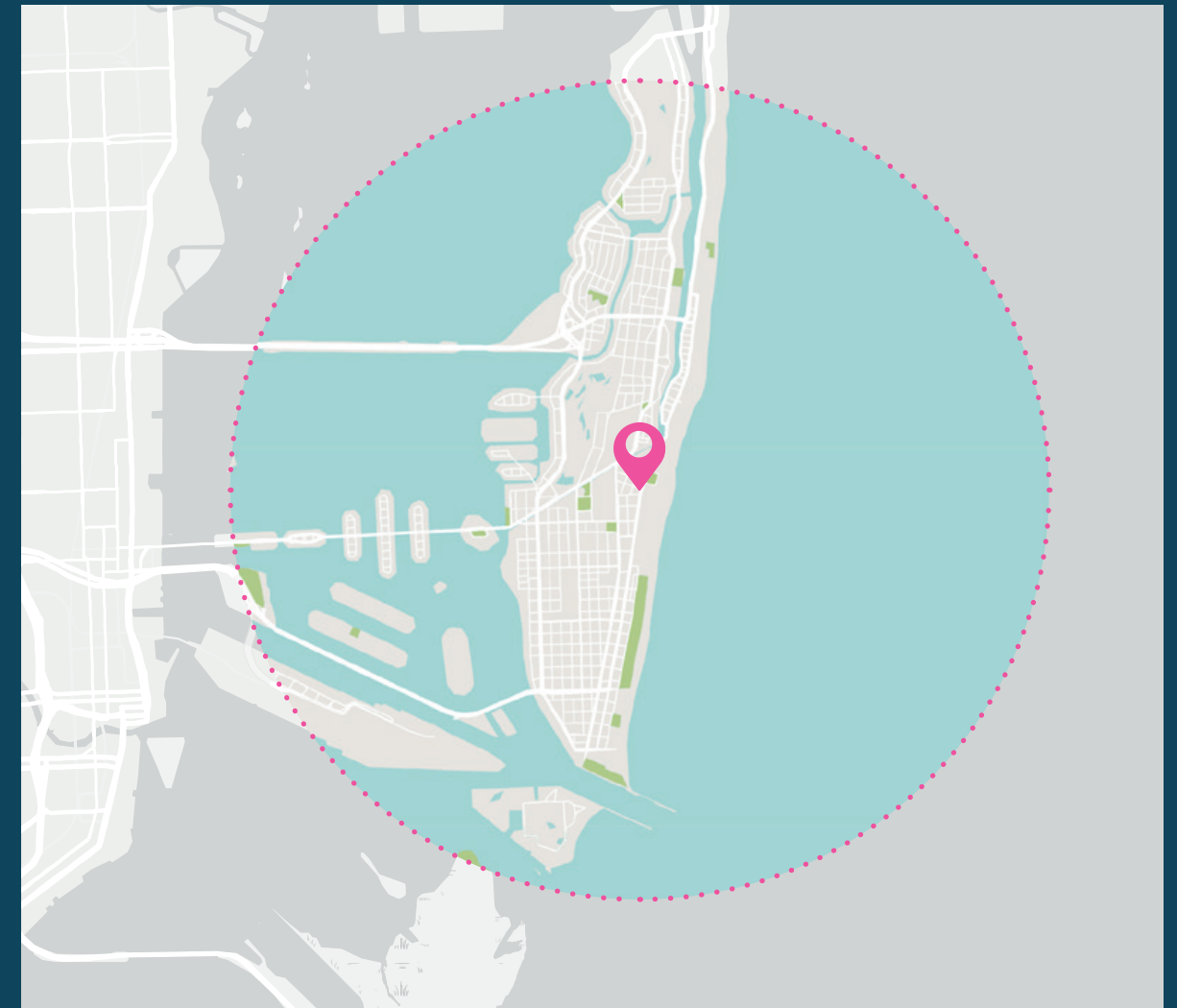
Sweet  
Liberty  
BEACH BEACH

HOTEL GREYSTONE

2000  
COLLINS AVE  
Miami Beach



# 3 MILE Demographics



**\$682K**  
Median Home Value

**40K**  
Number of Households

**2.4%**  
Annual Household Growth

**75K**  
Total Population

**\$107K**  
Average Income

**49%**  
Bachelor's Degree or Higher

**45.7**  
Average Age

**\$320M**  
F&B Spending

**26K**  
VPD



# Property Photos



**2ND Floor**  
Vacancy  
8,105 SF



**Unit D**  
867 SF  
**Hennah**  
Current tenant





# Retail Map



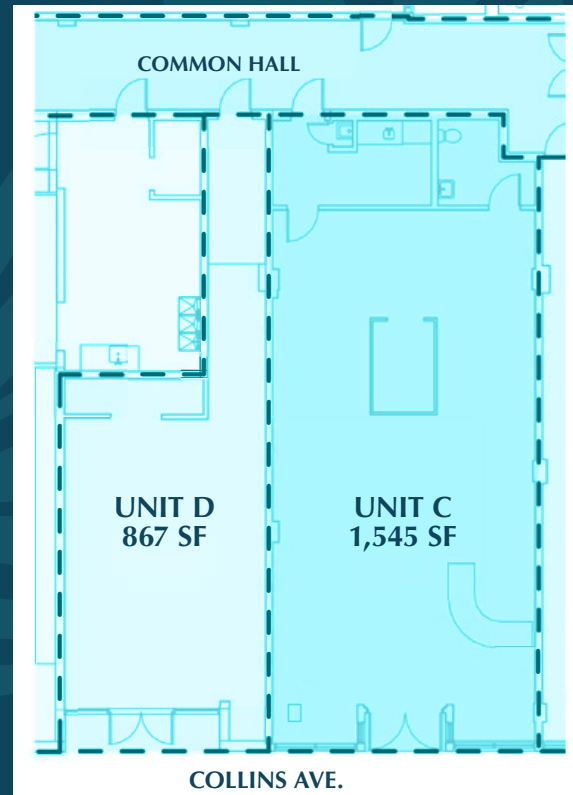
2000  
COLLINS AVE  
*Miami Beach*



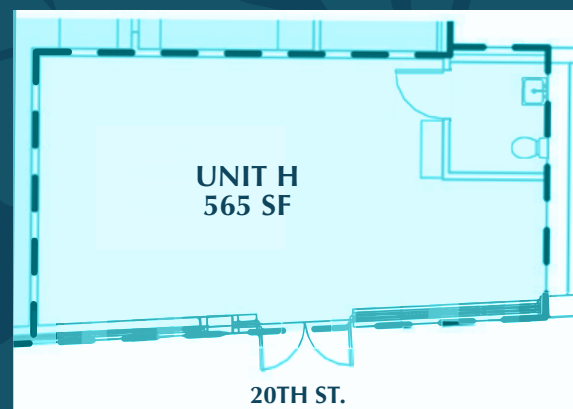


# Site Plan

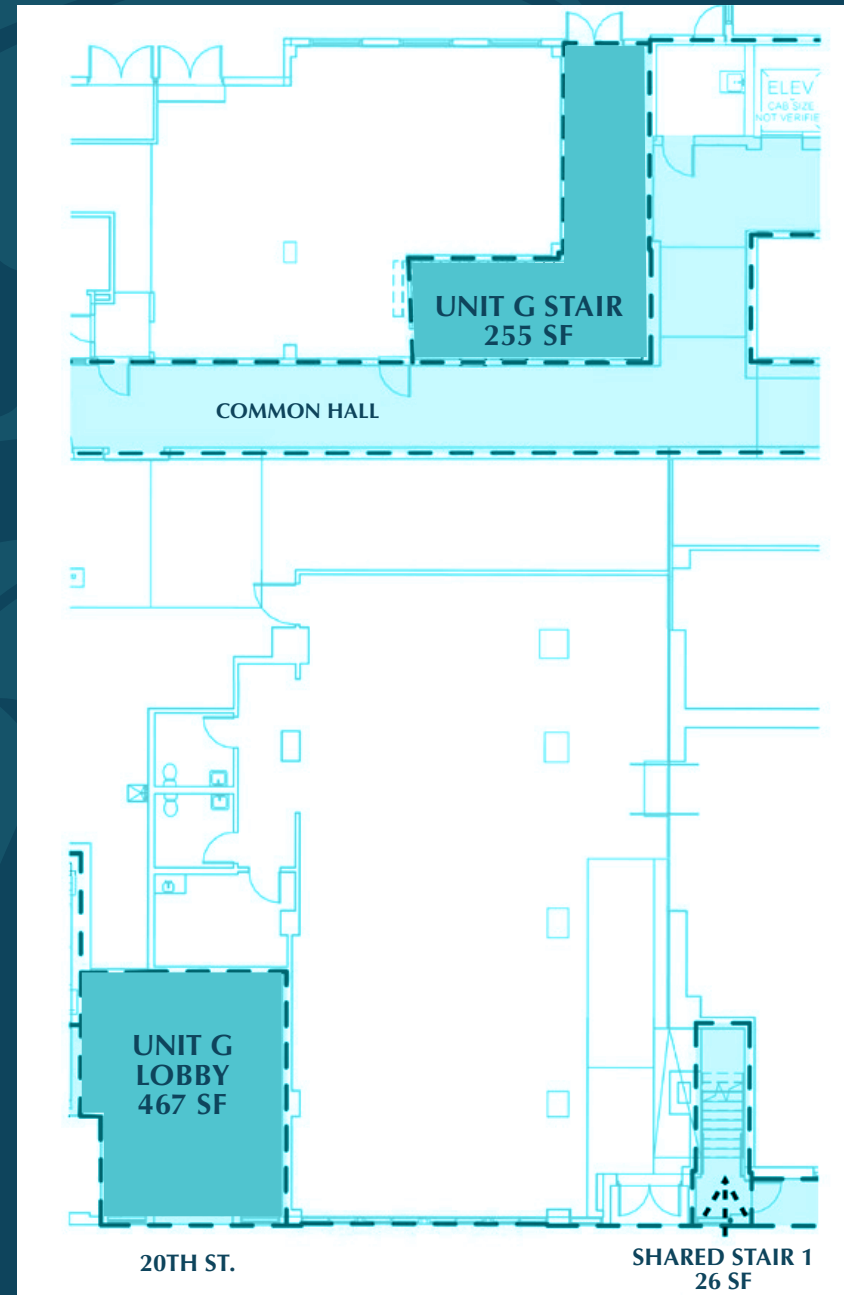
UNIT C & D



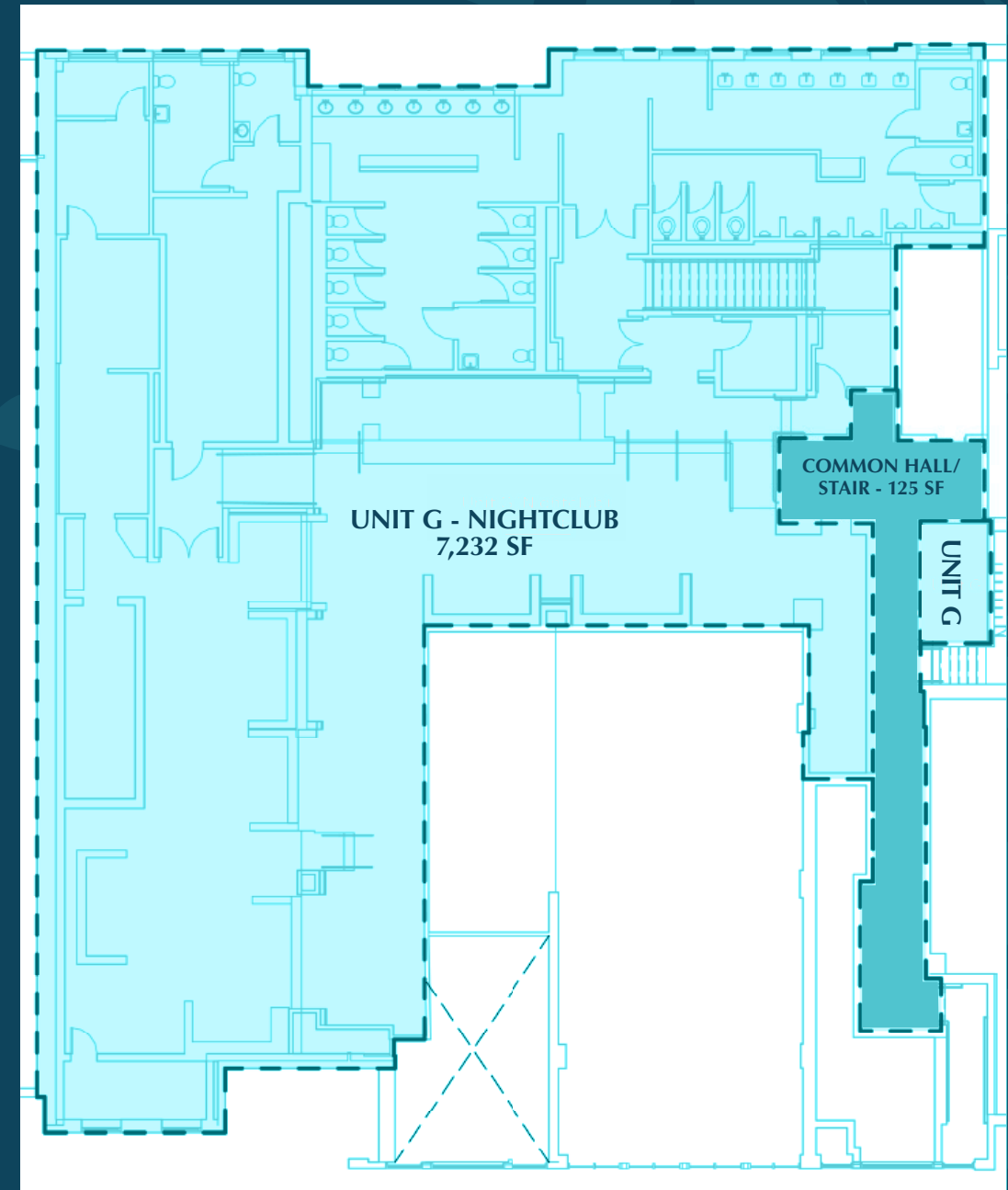
UNIT H



UNIT G



UNIT G





# 2000

## COLLINS AVE

*Miami Beach*

2000 Collins Ave, Miami Beach, FL 33139

---

**John H. Ellis**

617-834-1379

john.ellis@nmrk.com

**Whitney Haala**

612-719-2089

whitney.haala@nmrk.com

**NEWMARK**

1111 Brickell Ave., Suite 2000 - Miami, FL 33131

Newmark has implemented a proprietary database and our tracking methodology has been revised. With this expansion and refinement in our data, there may be adjustments in historical statistics including availability, asking rents, absorption and effective rents. Newmark Research Reports are available at [nmrk.com/insights](http://nmrk.com/insights).

All information contained in this publication is derived from sources that are deemed to be reliable. However, Newmark has not verified any such information, and the same constitutes the statements and representations only of the source thereof and not of Newmark. Any recipient of this publication should independently verify such information and all other information that may be material to any decision the recipient may make in response to this publication and should consult with professionals of the recipient's choice with regard to all aspects of that decision, including its legal, financial and tax aspects and implications. Any recipient of this publication may not, without the prior written approval of Newmark, distribute, disseminate, publish, transmit, copy, broadcast, upload, download or in any other way reproduce this publication or any of the information it contains. This document is intended for informational purposes only, and none of the content is intended to advise or otherwise recommend a specific strategy. It is not to be relied upon in any way to predict market movement, investment in securities, transactions, investment strategies or any other matter.