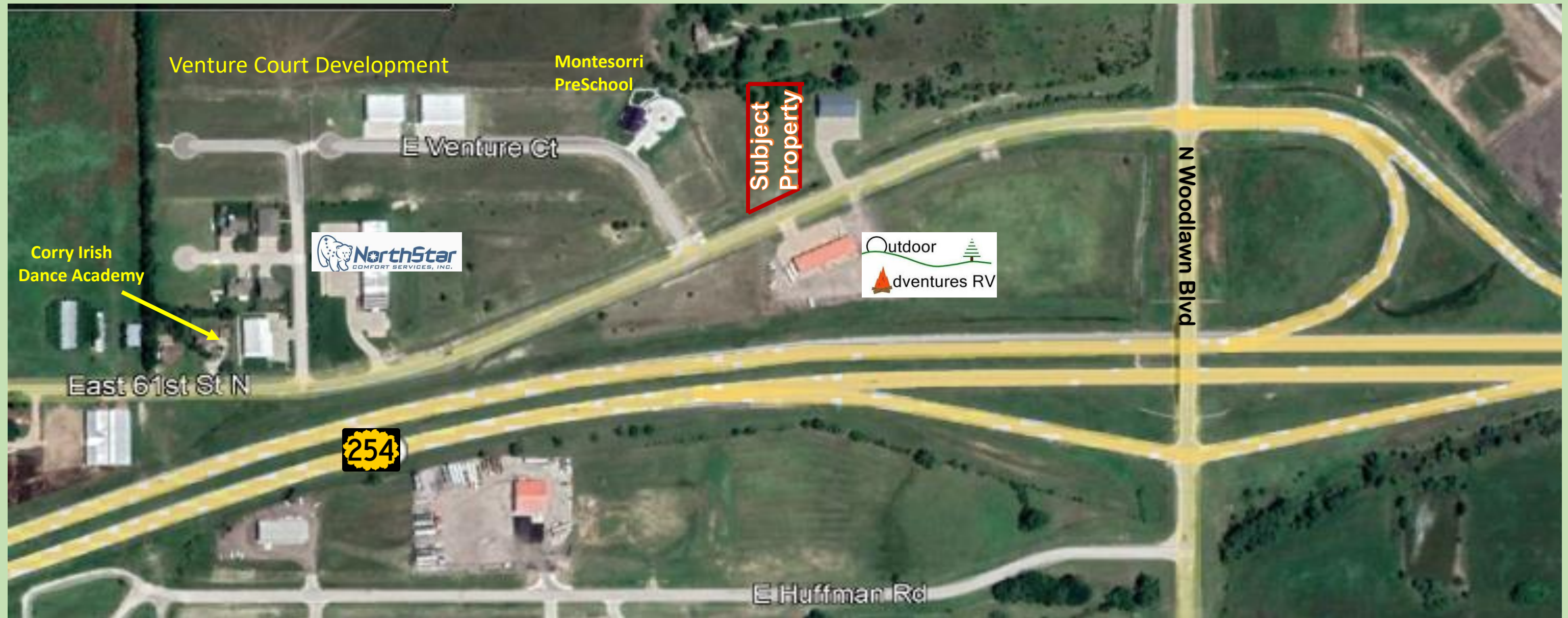


# **.56 Acres for Sale or Lease Build to Suit at 61<sup>st</sup> Street North & North Woodlawn in Kechi, KS**



**.56 Acres / 24,394 Sq Ft      Zoned C-3      Build to Suit as Office – Warehouse Flex Space**  
**Easy Access to Wichita KS, Park City KS, Bel Aire KS**  
**Near the proposed Integra Chip facility**

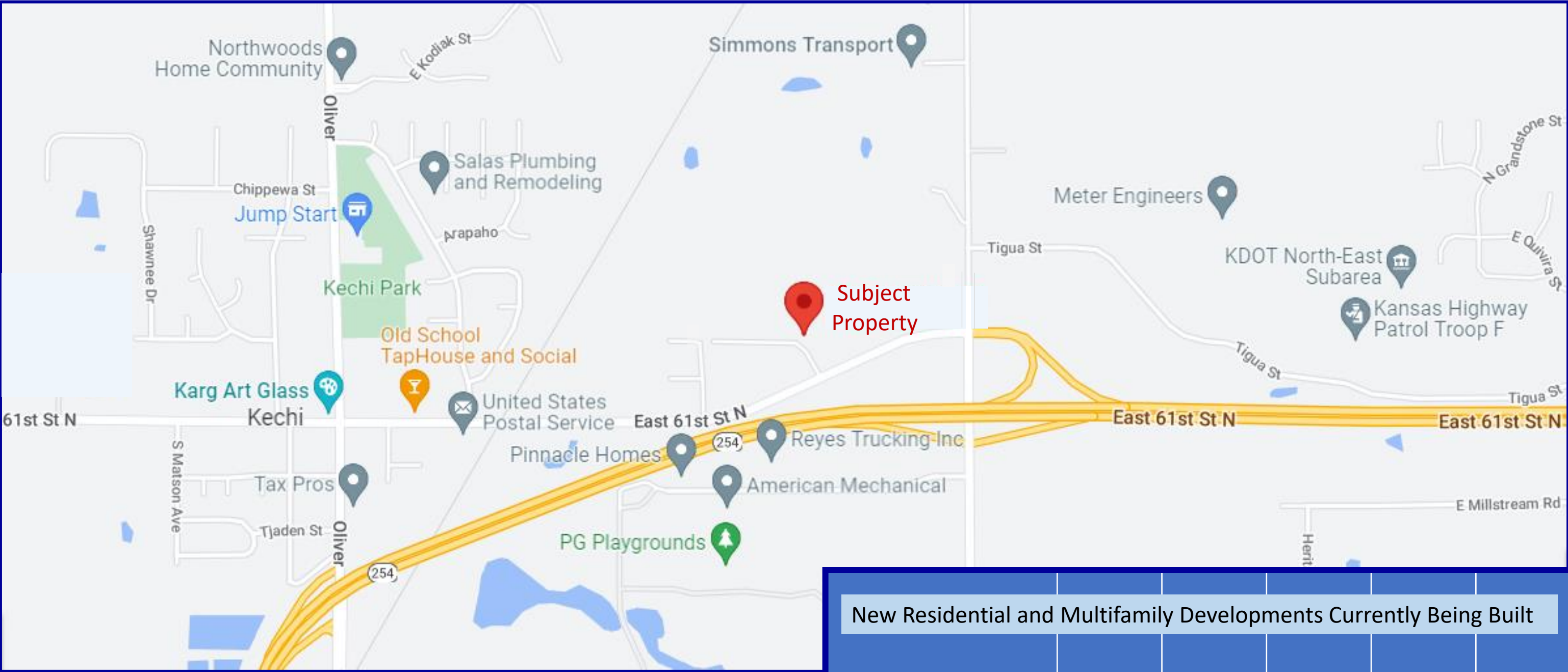
**\$105,000 Sales Price and Terms for Lease Build to Suit to be Negotiated**



**Contact: Craig Ablah (316) 634-2600**  
**8110 E 32<sup>nd</sup> Str N #150 Wichita KS 67226**



.56 Acres for Lease Build to Suit at 61<sup>st</sup> Street North & North Woodlawn in Kechi, KS



New Residential and Multifamily Developments Currently Being Built					
East 61st St N & South Oliver Street, Kechi, KS, USA	1 mi	10 mi	15 mi	20 mi	
Population	1,419	278,522	472,813	575,521	
Median HH Income	\$88,559	\$63,936	\$66,577	\$68,082	
Population Median Age	40.6	35.9	35.9	36.1	
Households	570	113,022	186,715	225,784	



Contact: Craig Ablah (316) 634-2600

8110 E 32<sup>nd</sup> Str N #150 Wichita KS 67226