

EAST INDUSTRIAL BAY



FOR LEASE ±9,964 SF STAND ALONE INDUSTRIAL BUILDING

288 BOEING COURT , LIVERMORE, CA 94551

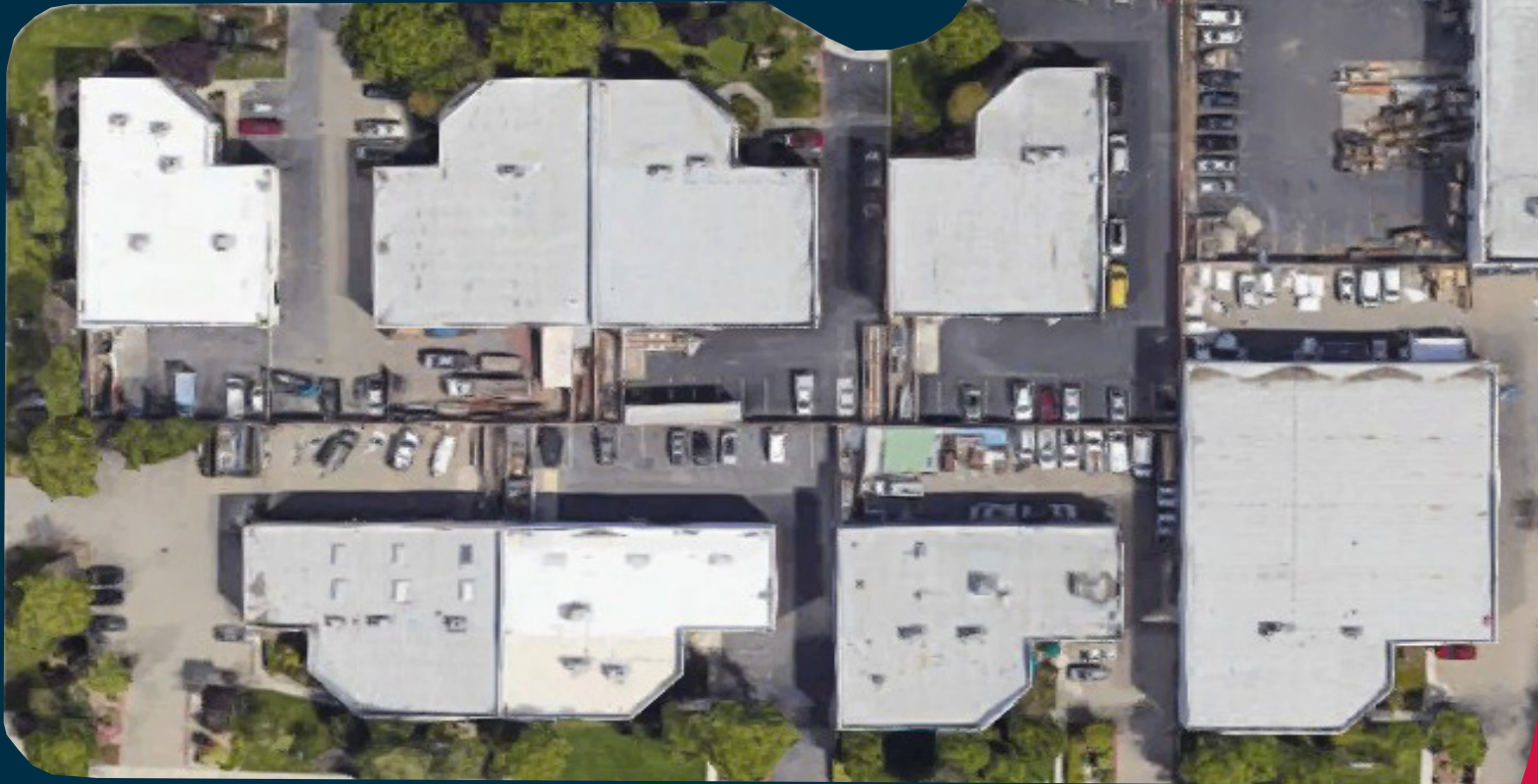
LOCAL EXPERTISE. INTERNATIONAL REACH. WORLD CLASS.



RUTAN DRIVE



BOEING COURT



WRIGHT BROTHERS AVE





±9,964 SF Stand alone Industrial Building



Warehouse consists of 2 Grade Level Roll up Doors



Situated on ±0.52 acres



Warehouse has HVAC



±2,000 SF Office space



Bonus mezzanine space



600 amps (Tenant to Confirm)



±5,000 SF yard space paved and secured



Two (2) restrooms



Industrial zoning

PROPERTY HIGHLIGHTS

288
BOEING COURT

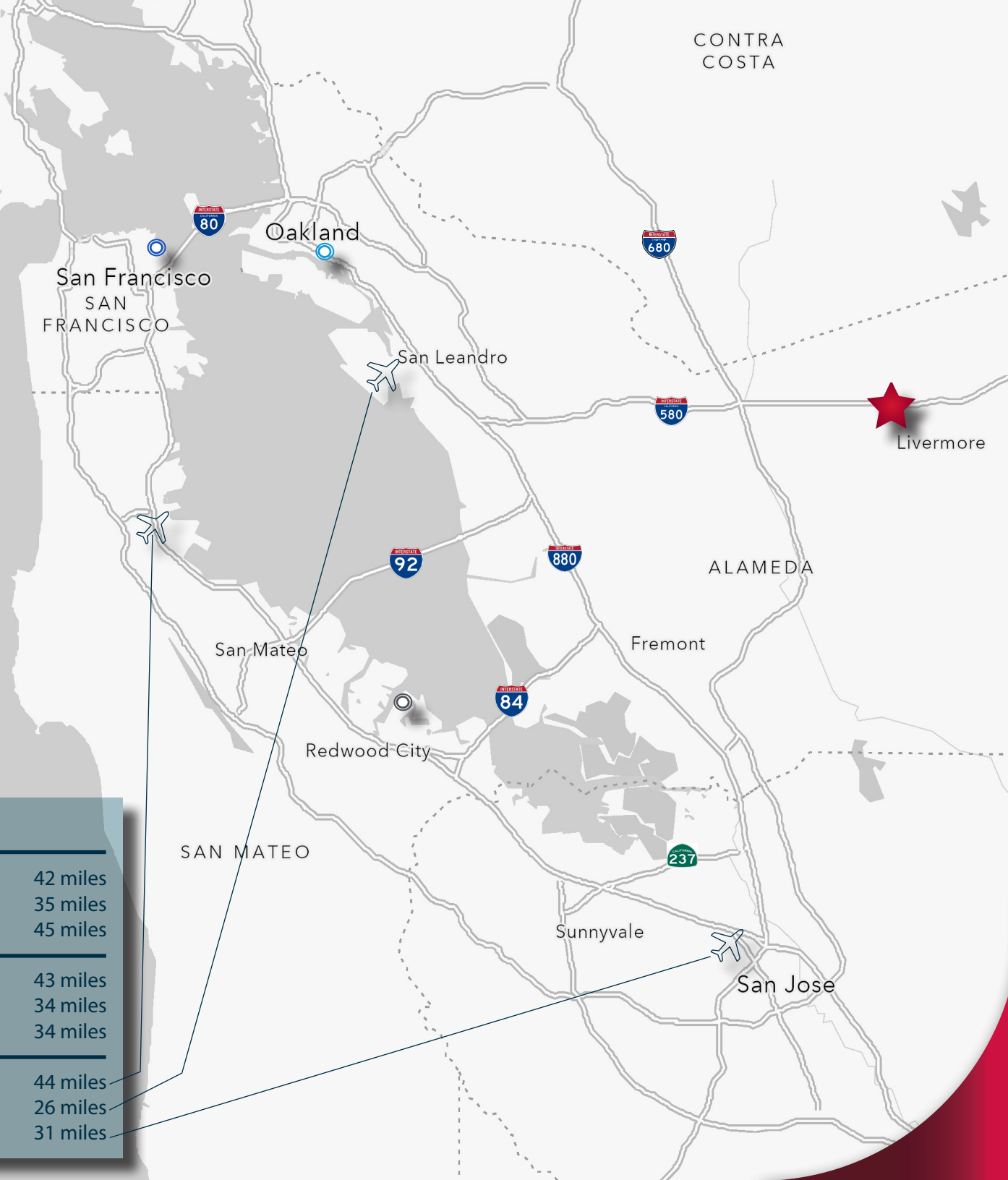


PARKING

REGIONAL MAP

DISTANCE FROM SITE ★

○ Port of San Francisco	42 miles
● Port of Oakland	35 miles
⊙ Port of Redwood City	45 miles
<hr/>	
San Francisco	43 miles
Oakland	34 miles
San Jose	34 miles
<hr/>	
San Francisco International (SFO) Airport	44 miles
Oakland International (OAK) Airport	26 miles
San Jose Mineta International (SJC) Airport	31 miles



FOR LEASE

±9,964 SF STAND ALONE INDUSTRIAL BUILDING

288 BOEING COURT | LIVERMORE, CA 94551



Blake Dicus

Principal
bdicus@lee-associates.com
925-737-4144
LIC NO 02074870



Sean Offers, SIOR

Principal
soffers@lee-associates.com
925-737-4159
LIC NO 01858116