

# 6 & 16 Hancock Avenue

East Norriton, PA 19401

For Sale

## \$1,700,000

## Major Adaptive Re-Use Opportunity with Parking Lot

### Beautiful Church Property For Sale

102,700 Total SF comprising Church, Parsonage/Residence and Parking Lot



- Land area: 83,200 SF
- Church: 1st & Lower Level - Building size: 14,867 SF
- Parsonage/Residence: Office, 4 bedrooms, 2 1/2 baths, basement - Building size: 2,500 SF
- Zoning: IN (Institutional District)

- Parking lot: 19,500 SF
- Zoning: BR - (Residential District)

**Total area: 102,700 SF**



For more information:

**Thomas Bond**

[tbond@geisrealty.com](mailto:tbond@geisrealty.com)

215 568 1755

Duane Morris Plaza // 30 South 17th Street, Suite 210, Philadelphia, PA 19103 // (215) 568-7222 Tel // (215) 568-5043 Fax // [geisrealty.com](http://geisrealty.com)

NO WARRANTY OR REPRESENTATION, EXPRESS OR IMPLIED, IS MADE AS TO THE ACCURACY OF THE INFORMATION CONTAINED HEREIN, AND THE SAME IS SUBMITTED SUBJECT TO ERRORS, OMISSIONS, CHANGE OF PRICE, RENTAL OR OTHER CONDITIONS, PRIOR SALE, LEASE OR FINANCING, OR WITHDRAWAL WITHOUT NOTICE, AND OF ANY SPECIAL LISTING CONDITIONS IMPOSED BY OUR PRINCIPALS NO WARRANTIES OR REPRESENTATIONS ARE MADE AS TO THE CONDITION OF THE PROPERTY OR ANY HAZARDS CONTAINED THEREIN ARE ANY TO BE IMPLIED.

# 6 & 16 Hancock Avenue

East Norriton, PA 19401

Exterior Photos



**NAI** Geis Realty Group, Inc.

For more information:

**Thomas Bond**

[tbond@geisrealty.com](mailto:tbond@geisrealty.com)

215 568 1755

Duane Morris Plaza // 30 South 17th Street, Suite 210, Philadelphia, PA 19103 // (215) 568-7222 Tel // (215) 568-5043 Fax // [geisrealty.com](http://geisrealty.com)

NO WARRANTY OR REPRESENTATION, EXPRESS OR IMPLIED, IS MADE AS TO THE ACCURACY OF THE INFORMATION CONTAINED HEREIN, AND THE SAME IS SUBMITTED SUBJECT TO ERRORS, OMISSIONS, CHANGE OF PRICE, RENTAL OR OTHER CONDITIONS, PRIOR SALE, LEASE OR FINANCING, OR WITHDRAWAL WITHOUT NOTICE, AND OF ANY SPECIAL LISTING CONDITIONS IMPOSED BY OUR PRINCIPALS NO WARRANTIES OR REPRESENTATIONS ARE MADE AS TO THE CONDITION OF THE PROPERTY OR ANY HAZARDS CONTAINED THEREIN ARE ANY TO BE IMPLIED.

# 6 & 16 Hancock Avenue

East Norriton, PA 19401

Interior Photos



For more information:

**Thomas Bond**

[tbond@geisrealty.com](mailto:tbond@geisrealty.com)

215 568 1755

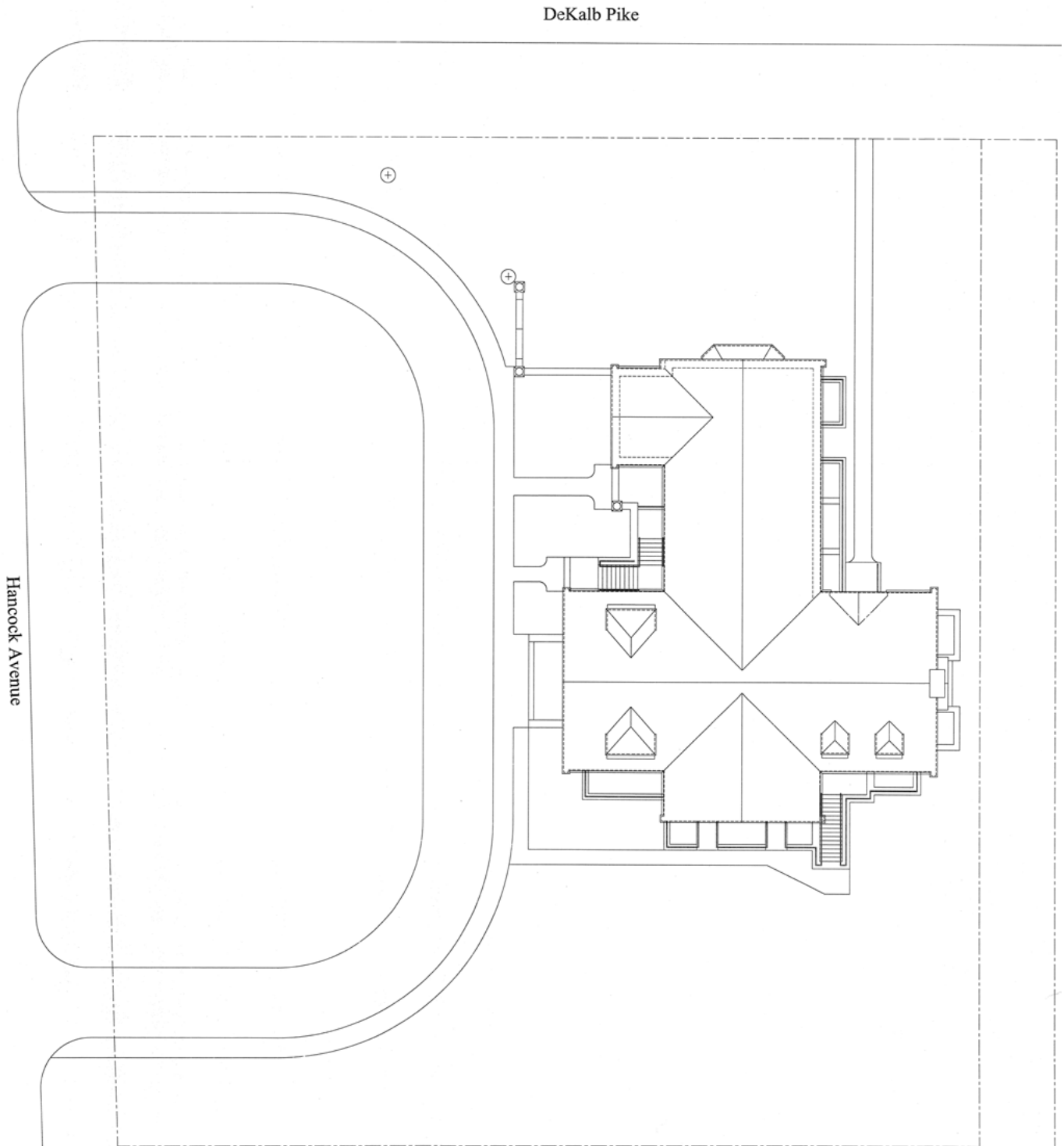
Duane Morris Plaza // 30 South 17th Street, Suite 210, Philadelphia, PA 19103 // (215) 568-7222 Tel // (215) 568-5043 Fax // [geisrealty.com](http://geisrealty.com)

NO WARRANTY OR REPRESENTATION, EXPRESS OR IMPLIED, IS MADE AS TO THE ACCURACY OF THE INFORMATION CONTAINED HEREIN, AND THE SAME IS SUBMITTED SUBJECT TO ERRORS, OMISSIONS, CHANGE OF PRICE, RENTAL OR OTHER CONDITIONS, PRIOR SALE, LEASE OR FINANCING, OR WITHDRAWAL WITHOUT NOTICE, AND OF ANY SPECIAL LISTING CONDITIONS IMPOSED BY OUR PRINCIPALS NO WARRANTIES OR REPRESENTATIONS ARE MADE AS TO THE CONDITION OF THE PROPERTY OR ANY HAZARDS CONTAINED THEREIN ARE ANY TO BE IMPLIED.

# 6 & 16 Hancock Avenue

East Norriton, PA 19401

Site Plan



For more information:

**Thomas Bond**

[tbond@geisrealty.com](mailto:tbond@geisrealty.com)

215 568 1755

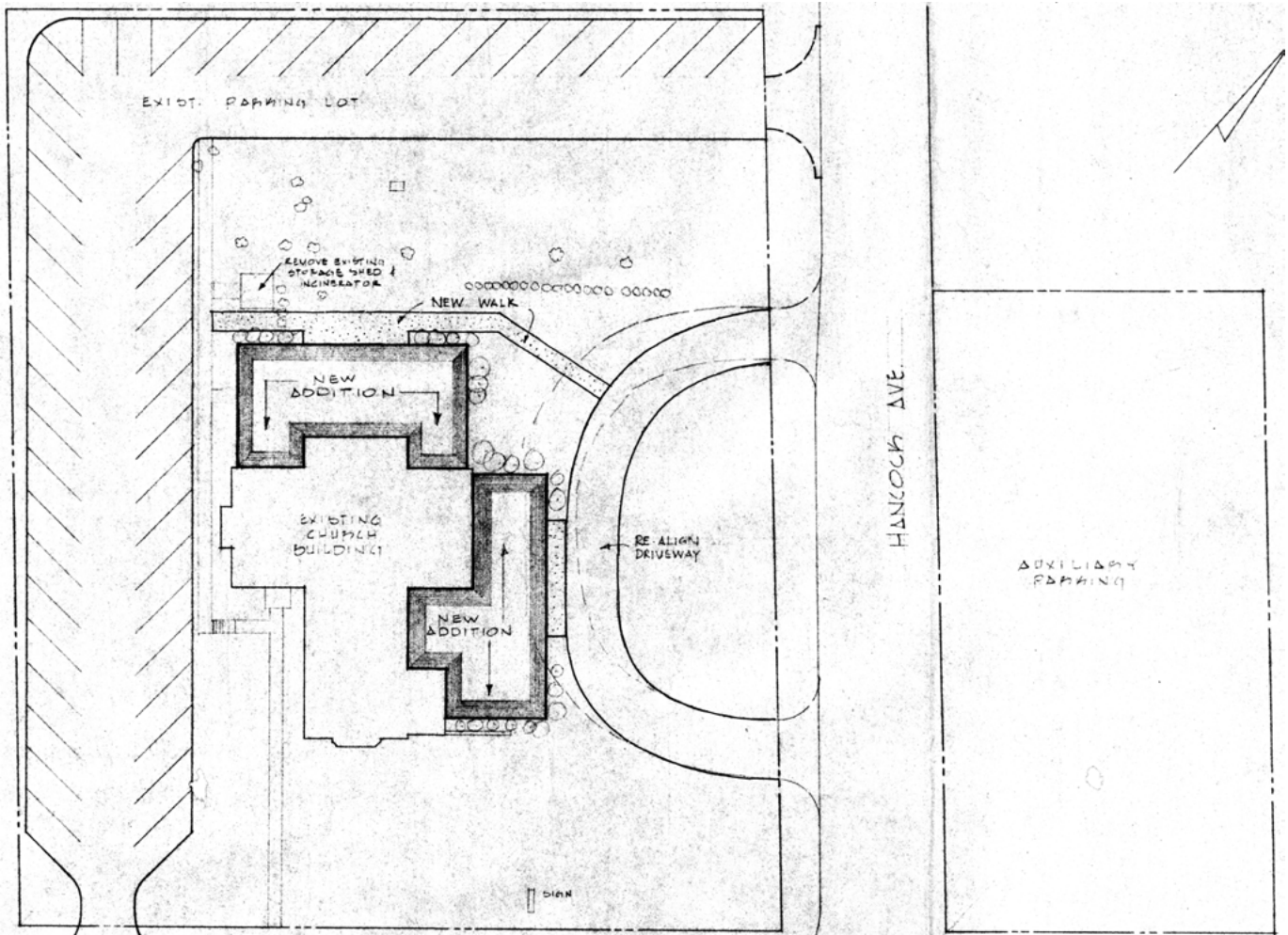
Duane Morris Plaza // 30 South 17th Street, Suite 210, Philadelphia, PA 19103 // (215) 568-7222 Tel // (215) 568-5043 Fax // [geisrealty.com](http://geisrealty.com)

NO WARRANTY OR REPRESENTATION, EXPRESS OR IMPLIED, IS MADE AS TO THE ACCURACY OF THE INFORMATION CONTAINED HEREIN, AND THE SAME IS SUBMITTED SUBJECT TO ERRORS, OMISSIONS, CHANGE OF PRICE, RENTAL OR OTHER CONDITIONS, PRIOR SALE, LEASE OR FINANCING, OR WITHDRAWAL WITHOUT NOTICE, AND OF ANY SPECIAL LISTING CONDITIONS IMPOSED BY OUR PRINCIPALS NO WARRANTIES OR REPRESENTATIONS ARE MADE AS TO THE CONDITION OF THE PROPERTY OR ANY HAZARDS CONTAINED THEREIN ARE ANY TO BE IMPLIED.

# 6 & 16 Hancock Avenue

East Norriton, PA 19401

## Conceptual Development Plan



DeKalb Street

*"New Addition" never built.*



For more information:

**Thomas Bond**

[tbond@geisrealty.com](mailto:tbond@geisrealty.com)

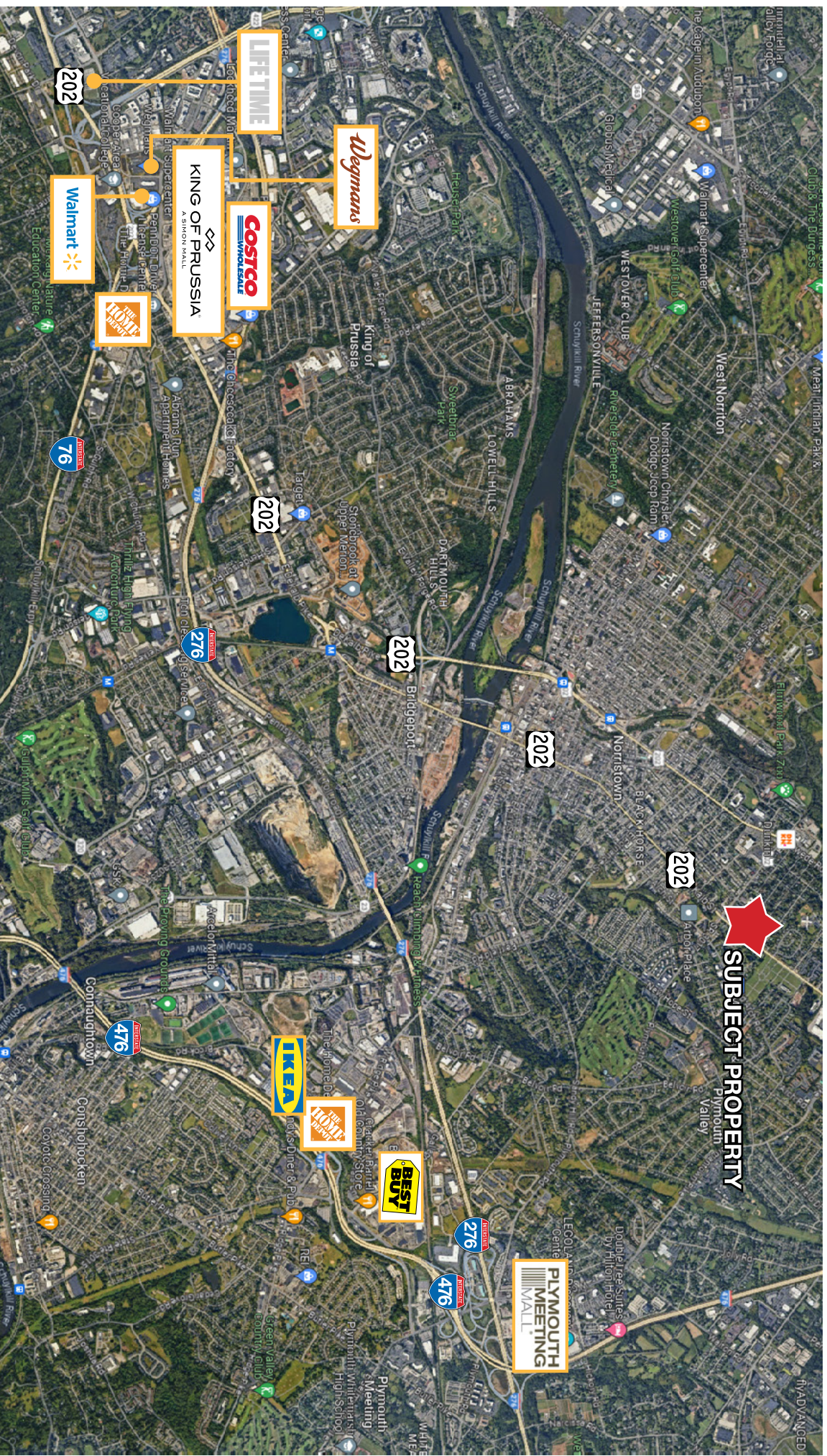
215 568 1755

Duane Morris Plaza // 30 South 17th Street, Suite 210, Philadelphia, PA 19103 // (215) 568-7222 Tel // (215) 568-5043 Fax // [geisrealty.com](http://geisrealty.com)

NO WARRANTY OR REPRESENTATION, EXPRESS OR IMPLIED, IS MADE AS TO THE ACCURACY OF THE INFORMATION CONTAINED HEREIN, AND THE SAME IS SUBMITTED SUBJECT TO ERRORS, OMISSIONS, CHANGE OF PRICE, RENTAL OR OTHER CONDITIONS, PRIOR SALE, LEASE OR FINANCING, OR WITHDRAWAL WITHOUT NOTICE, AND OF ANY SPECIAL LISTING CONDITIONS IMPOSED BY OUR PRINCIPALS NO WARRANTIES OR REPRESENTATIONS ARE MADE AS TO THE CONDITION OF THE PROPERTY OR ANY HAZARDS CONTAINED THEREIN ARE ANY TO BE IMPLIED.

# 6 & 16 Hancock Avenue East Norriton, PA 19401

## Aerial Map and Amenities



For more information: [Thomas Bond](mailto:tbond@geisrealty.com) // [tbond@geisrealty.com](mailto:tbond@geisrealty.com) // 215 568 1755  
Duane Morris Plaza // 30 South 17th Street, Suite 210, Philadelphia, PA 19103 // (215) 568-7222 Tel // (215) 568-5043 Fax // [geisrealty.com](http://geisrealty.com)

No warranty or representation, express or implied, is made as to the accuracy of the information contained herein, and the same is submitted subject to errors, omissions, change of price, rental or other conditions, prior sale, lease or financing, or withdrawal without notice, and of any special listing conditions imposed by our principals no warranties or representations are made as to the condition of the property or any hazards contained therein are any to be implied.