

**COUNTRY
CLUB
VILLAGE**
YORBA LINDA



FOR LEASE

19701 YORBA LINDA BLVD
YORBA LINDA, CA 92886

COMMERCIAL WEST BROKERAGE, INC. | 949.723.7300 | www.commercialwest.com



PROPERTY SUMMARY

Retail opportunity at Trader Joe's anchored neighborhood shopping center in the heart of Yorba Linda, one of Orange County's most affluent and dense trade areas. The popular center features Home Goods, Bank of America and other strong co-tenancy.

SUMMARY

COUNTRY CLUB VILLAGE
19701 YORBA LINDA BLVD
YORBA LINDA, CA 92886
FOR LEASE - 21,440 SF

COMMERCIAL WEST BROKERAGE

Phil Berry, LIC#1208635

Chase Lemley, LIC# 2007670

Matt Berry, LIC#2134414

mberry@commercialwest.com | 949.723.7300



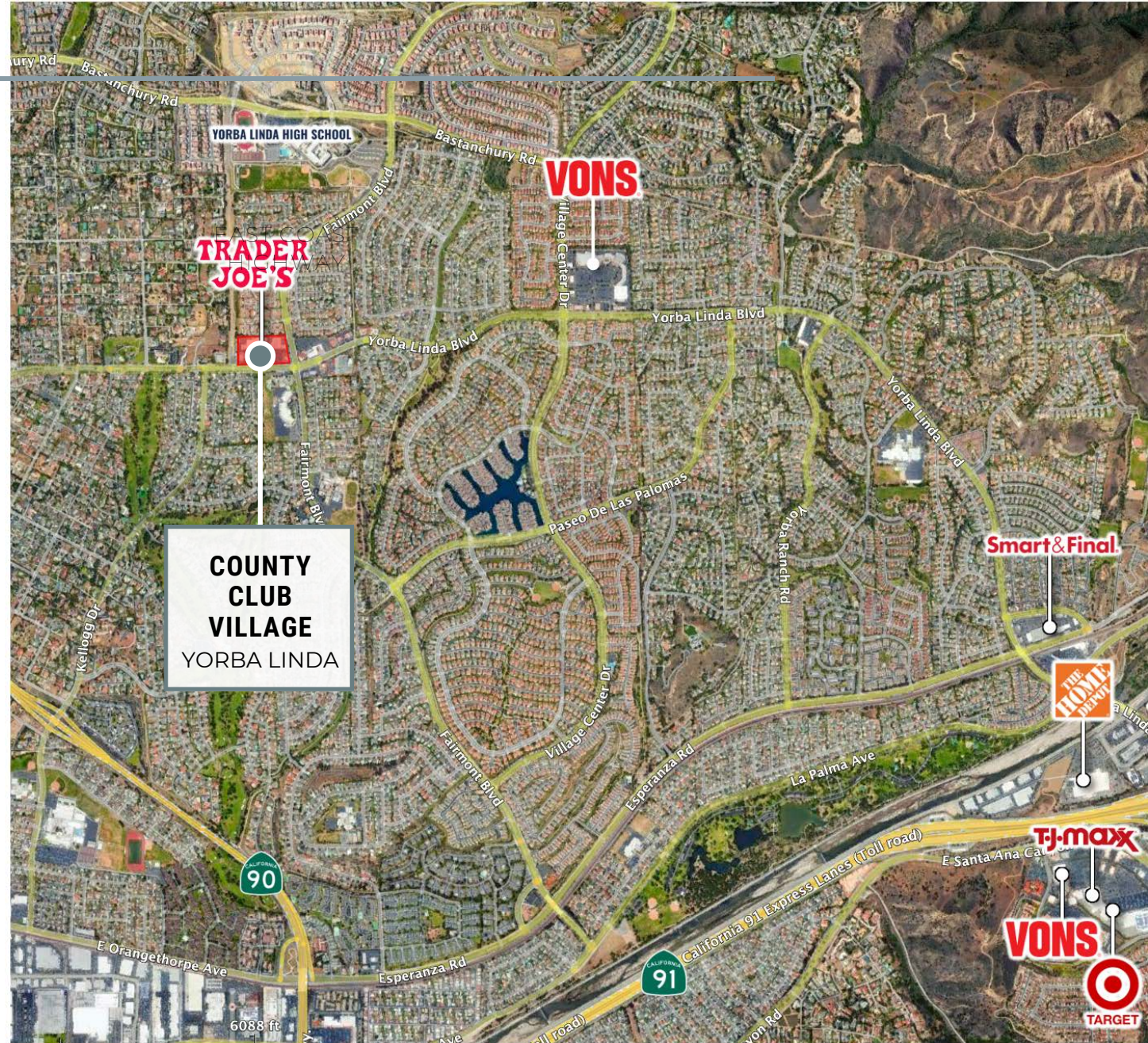
Location

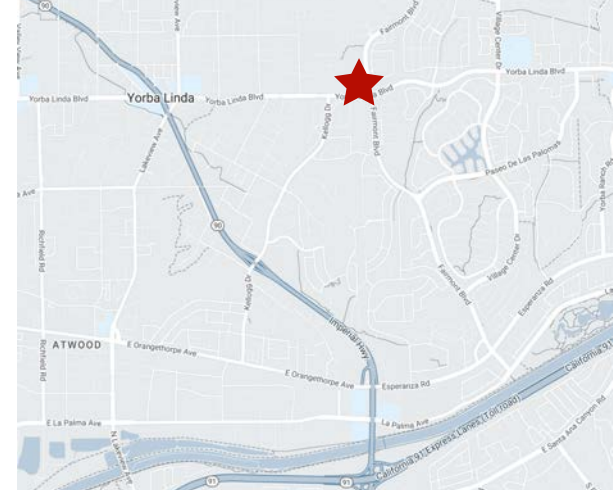
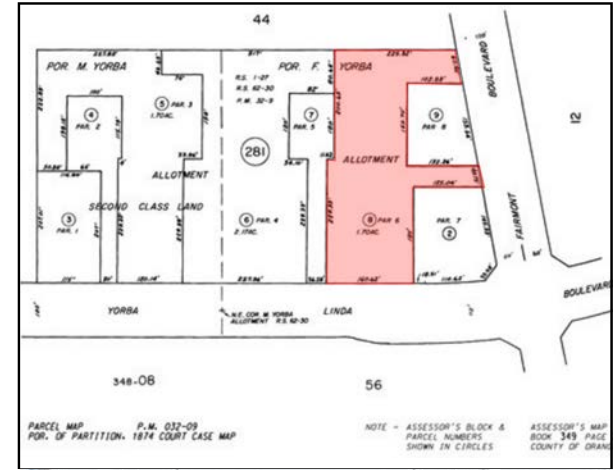
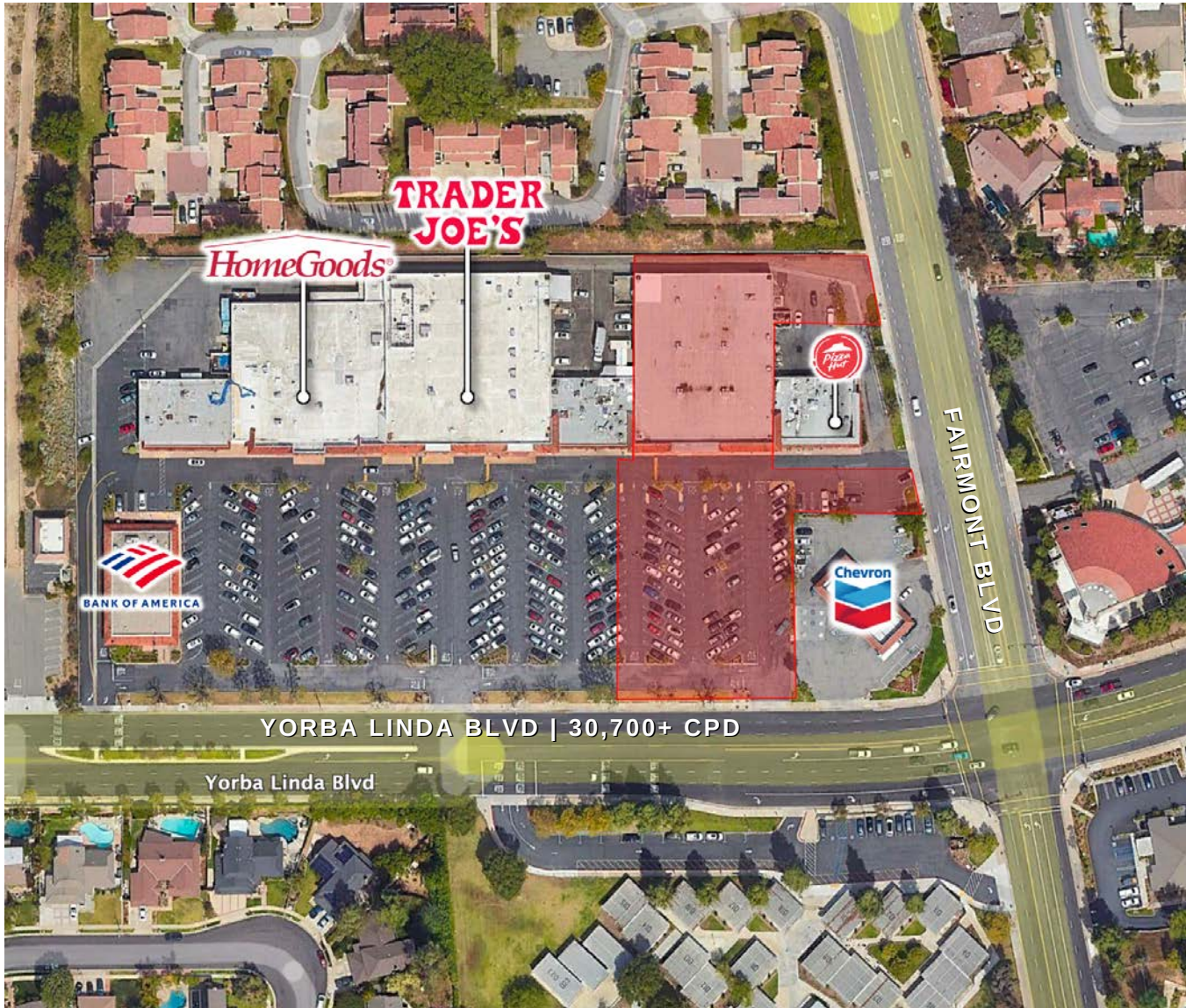
Ideal neighborhood location with directly visibility to over 30,700 cars per day on Yorba Linda Blvd.

Center serves an affluent community with new housing and household incomes over \$200,000 within 2mi. radius

19701 YORBA LINDA BLVD
YORBA LINDA, CA 92886

FOR LEASE - 21,440 SF





SITE SUMMARY

19701 Yorba Linda Blvd
 Yorba Linda, CA 92886

APN | 349-281-08
 TOTAL AREA | 1.71 AC

FOR LEASE | 21,440 SQ FT



COMMERCIAL WEST BROKERAGE
 Phil Berry, LIC#1208635
 Chase Lemley, LIC# 2007670
 Matt Berry, LIC#2134414
 mberry@commercialwest.com | 949.723.7300



BY THE NUMBERS

19701 Yorba Linda Blvd., Yorba Linda, CA 92886

ESTIMATED POPULATION

1 mi | 12,726
2mi | 39,888
3 mi | 74,757

AVERAGE HH INCOME

1 mi | \$236,045
2mi | \$206,656
3 mi | \$195,515

DAYTIME POPULATION

1 mi | 9,498
2mi | 30,079
3 mi | 71,769