

6333 Mission Gorge Road
San Diego, CA 92120



6333 Mission Gorge Rd

ADDRESS

6333 Mission Gorge Rd, San Diego, CA 92120

BUILDING DETAILS

| | |
|----------------------|------------------------|
| Property Type/Zoning | Commercial/ CC-4-2 |
| Tenancy | Single |
| Subtype | Restaurant & Bar |
| Total Building SQFT | 5,766 |
| Lot Size | .29 Acres, 12,632 SQFT |
| APN: | 458-531-02-00 |
| County | San Diego County |

CC-4-2 is intended to accommodate development with a high intensity, strip commercial characteristics and permits a maximum density of 1 dwelling unit for each 1,500 square feet of lot area

PROPERTY HIGHLIGHTS

- High end restaurant and bar buildout
- Great freeway access
- Flexible commercial uses
- Dense retail trade are in Grantville adjacent Kaiser Permanente Medical Center and dense residential

OVERVIEW

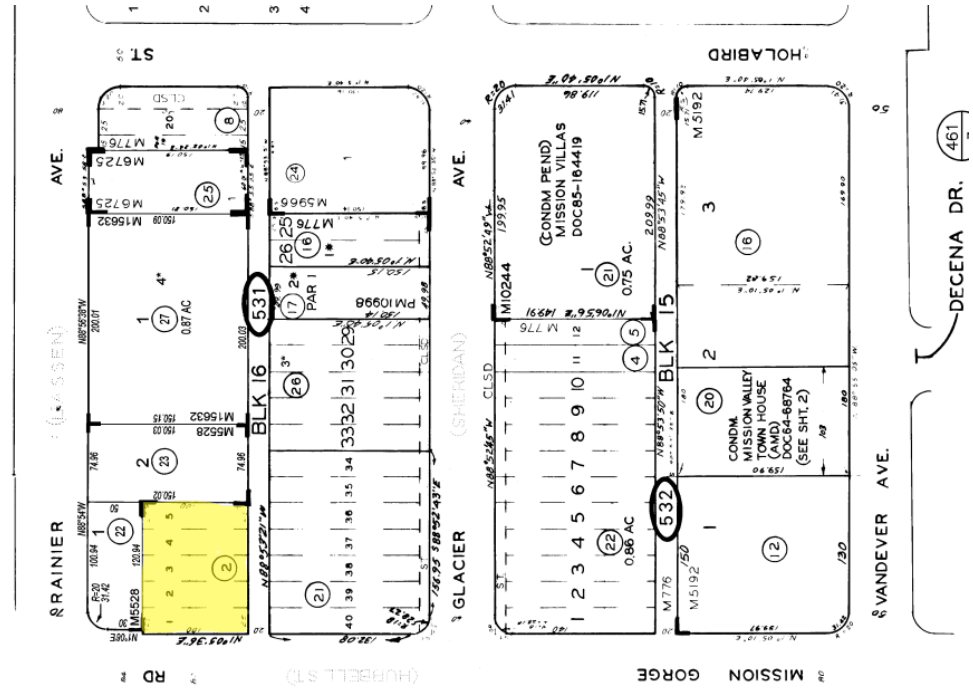


| | |
|----------------------------------|--|
| PROPERTY ADDRESS | 6333 Mission Gorge Rd San Diego, CA |
| PRICE | \$2,500,000 |
| PRICE PER SQ. FT. | \$434 |
| PRICE PER SQ.FT. LAND | \$198 |
| VALUE OF ASSETS Includes FF&E | \$200,000 |
| BUILDING SIZE | 5,766 sq. ft. |
| PARKING SPACES | 15 + Street |
| YEAR BUILT | 1976 |
| TENANT LEASE EXP | N/A |

DEMOGRAPHICS

| 2 Mile | 5 Mile | 10 Mile |
|----------------------|----------|-----------|
| Population | | |
| 60,819 | 472,649 | 1,515,203 |
| Avg Household Income | | |
| \$115,615 | \$95,659 | \$101,604 |
| Daytime Employees | | |
| 43,875 | 275,273 | 832,909 |

PARCEL MAP



GRANTVILLE





Justin Earley BRE Lic #01414252
Senior Vice President
T: 619.398.8902
E: jearley@capital-rev.com

CAPITAL
REAL ESTATE VENTURES INC