



# Industrial Property for Sale

**1101 W MCPHERSON STREET  
KNOB NOSTER, MISSOURI**

## Property Highlights

- Total of 7,000 (±) sf in two buildings and 3.5 (±) acres of land
- Two buildings, 5,000 (±) sf and 2,000 (±) sf
- Approximately 30,000 sf of fenced land
- Two billboards on the property generating \$1,800 annually
- Security system with 19 cameras
- Visibility to 50 Highway
- Sale price \$350,000

*For information, please contact:*

**Justin Beal, CRRP**  
*Executive Managing Director, Principal*  
t 816-268-4241  
jbeal@nzimmer.com

1220 Washington Street, Suite 300  
Kansas City, MO 64105

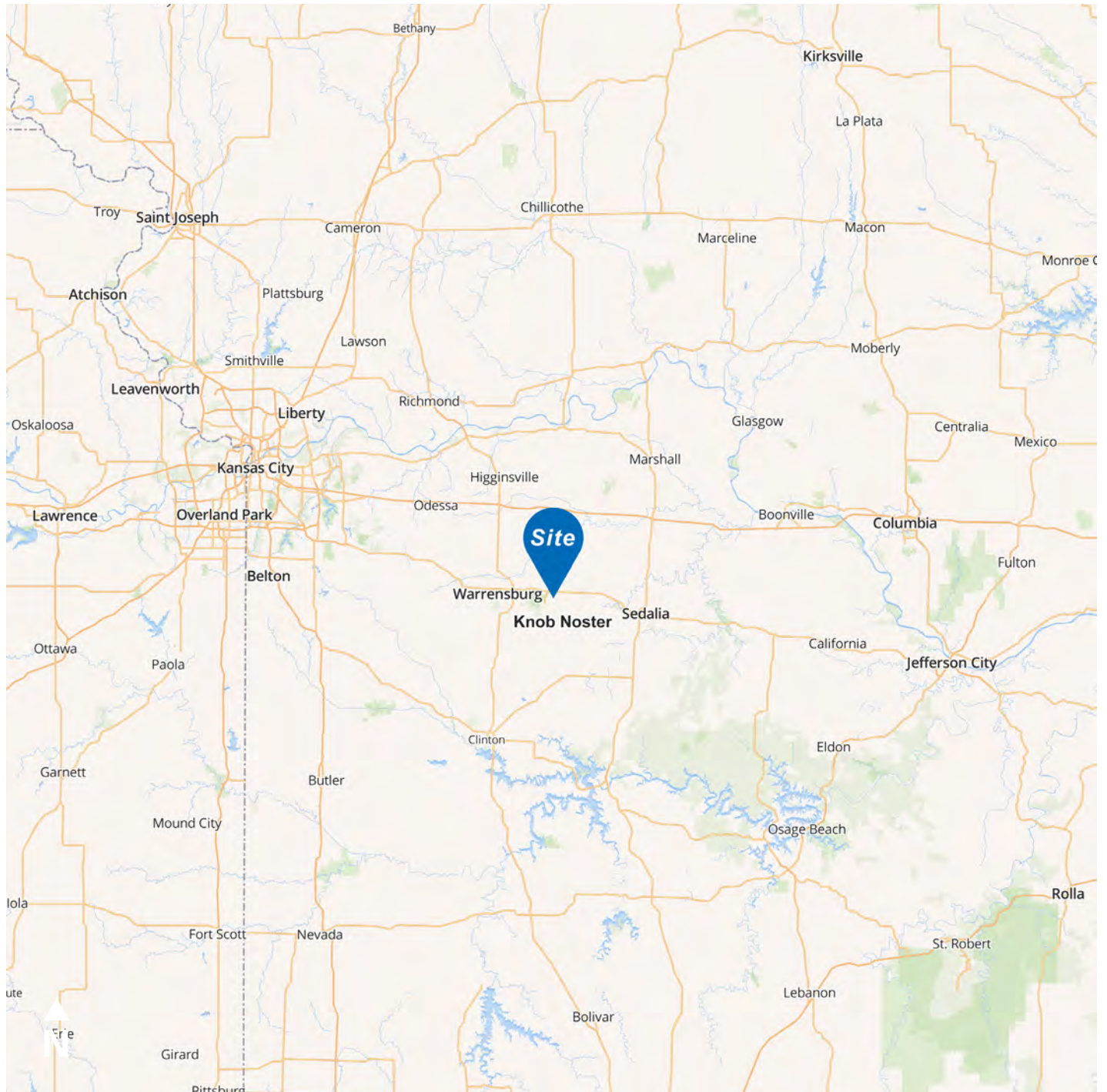
[nmrkzimmer.com](http://nmrkzimmer.com)



**NEWMARK  
ZIMMER**

The information contained herein has been obtained from sources deemed reliable but has not been verified and no guarantee, warranty or representation, either express or implied, is made with respect to such information. Terms of sale or lease and availability are subject to change or withdrawal without notice.

## 1101 W MCPHERSON STREET, KNOB NOSTER, MISSOURI



### CONTACT

**Justin Beal, CRRP**

*Executive Managing Director, Principal*

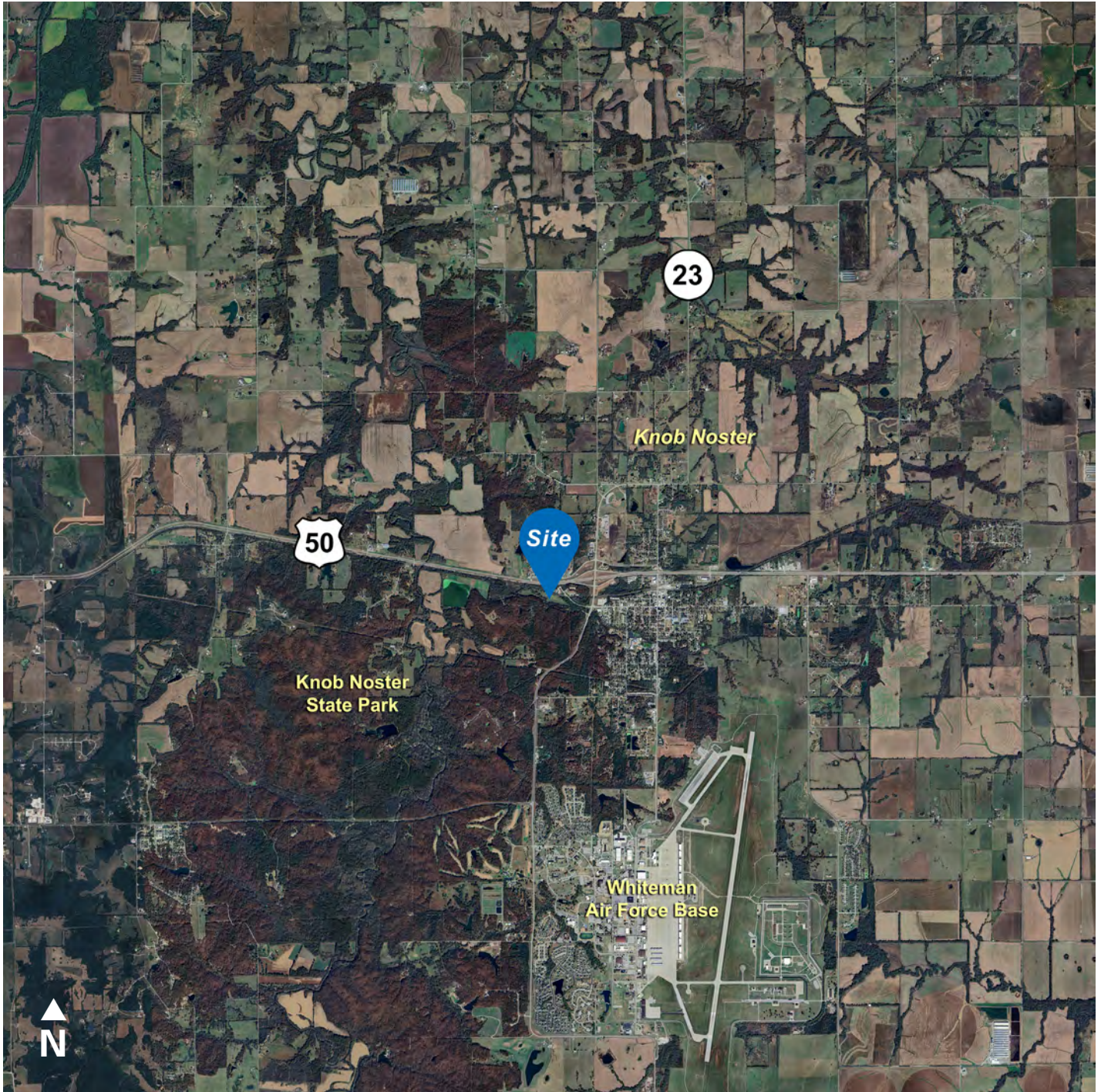
t 816-268-4241

jbeal@nzimmer.com

[nmrkzimmer.com](http://nmrkzimmer.com)

**NEWMARK**  
ZIMMER

1101 W MCPHERSON STREET, KNOB NOSTER, MISSOURI



CONTACT

**Justin Beal, CRRP**

*Executive Managing Director, Principal*

t 816-268-4241

jbeal@nzimmer.com

[nmrkzimmer.com](http://nmrkzimmer.com)

**NEWMARK**  
ZIMMER

1101 W MCPHERSON STREET, KNOB NOSTER, MISSOURI



CONTACT

**Justin Beal, CRRP**

*Executive Managing Director, Principal*

t 816-268-4241

jbeal@nzimmer.com

[nrmrkzimmer.com](http://nrmrkzimmer.com)

**NEWMARK**  
ZIMMER