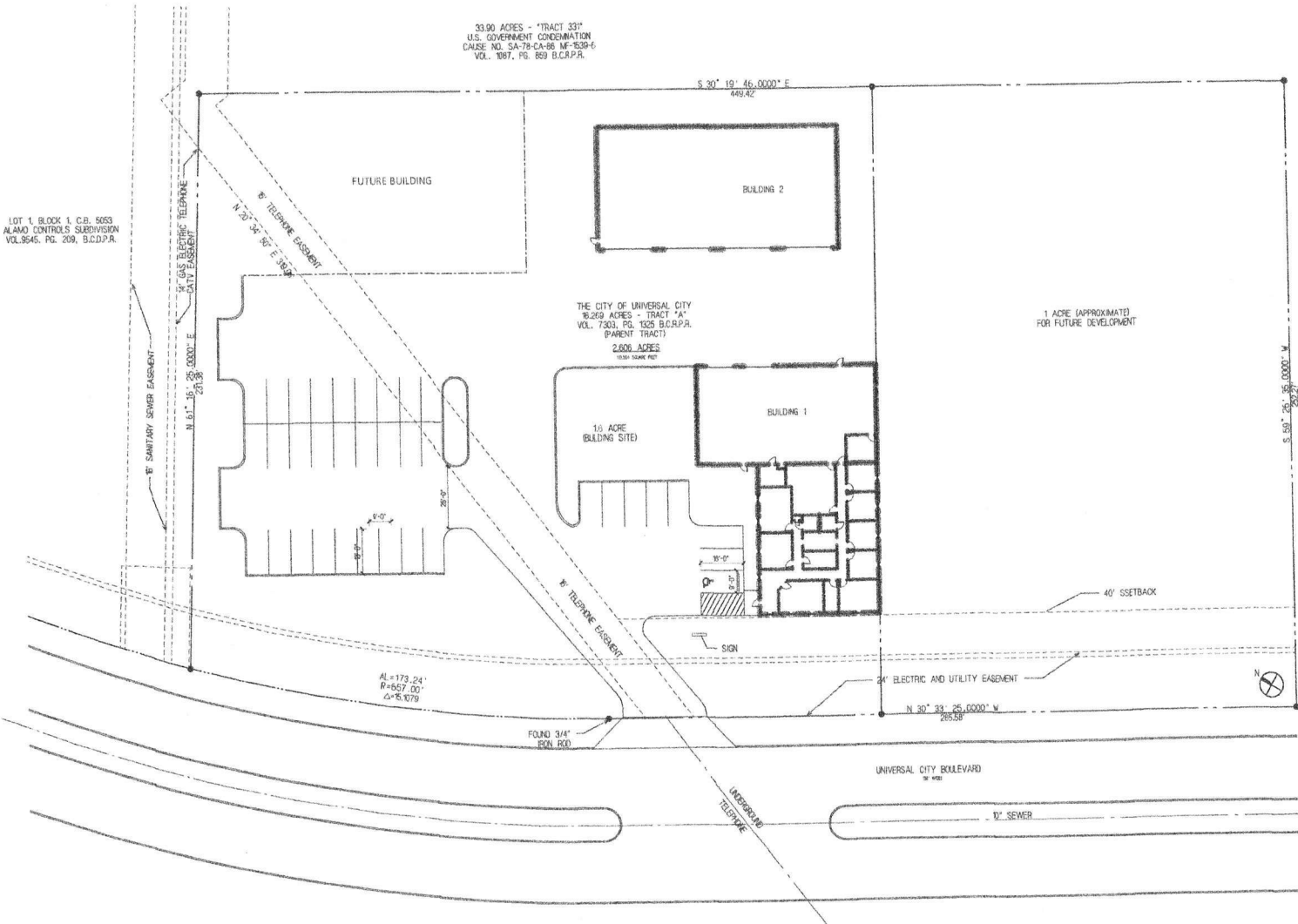


LOT 1, BLOCK 1, C.B. 5853
ALAMO CONTROLS SUBDIVISION
VOL. 9545, PG. 209, B.C.D.P.A.

33.90 ACRES - TRACT 331
U.S. GOVERNMENT CONDEMNATION
CAUSE NO. SA-79-CA-86 M-539-6
VOL. 1067, PG. 859 B.C.R.P.A.

THE CITY OF UNIVERSAL CITY
6,269 ACRES - TRACT "A"
VOL. 7303, PG. 1326 B.C.R.P.A.
(PARENT TRACT)
2,606 ACRES
100% BUREAU PLOT

THE CITY OF UNIVERSAL CITY
6,269 ACRES - TRACT "A"
VOL. 7303, PG. 1326 B.C.R.P.A.
(REMAINDER)



SITE PLAN

1:20



1300 UNIVERSAL CITY BLVD.
UNIVERSAL CITY, TEXAS



JOB NO. : 0442
SCALE : AS NOTED
DRAWN BY : SJK/CFB
DATE : 7/20/04
REVISIONS :

SHEET :
A1.0
SITE PLAN

OF : *
DO NOT SCALE DRAWINGS