



For Lease | Well Located Office in a Park Setting

Office Space Available

1042 Country Club Drive, Moraga, CA

Highlights



Suite 2A:
±262 RSF



Rental Rate:
\$2.50/RSF full-
service net suite
janitorial



Well maintained
property with
ample parking



Just off
Canyon Road



Tranquil tree-
filled setting



Close to Retail
Amenities:
Moraga Shopping
Center, Safeway,
banks, many
restaurants and
cafés, open spaces,
& parks



Contact Broker

Jeffrey Weil, ccim

Executive Vice President
CA License No. 00786195
jeff.weil@colliers.com
+1 925 389 2194

Colliers

1850 Mt Diablo Blvd, Suite 200
Walnut Creek, CA 94596
colliers.com

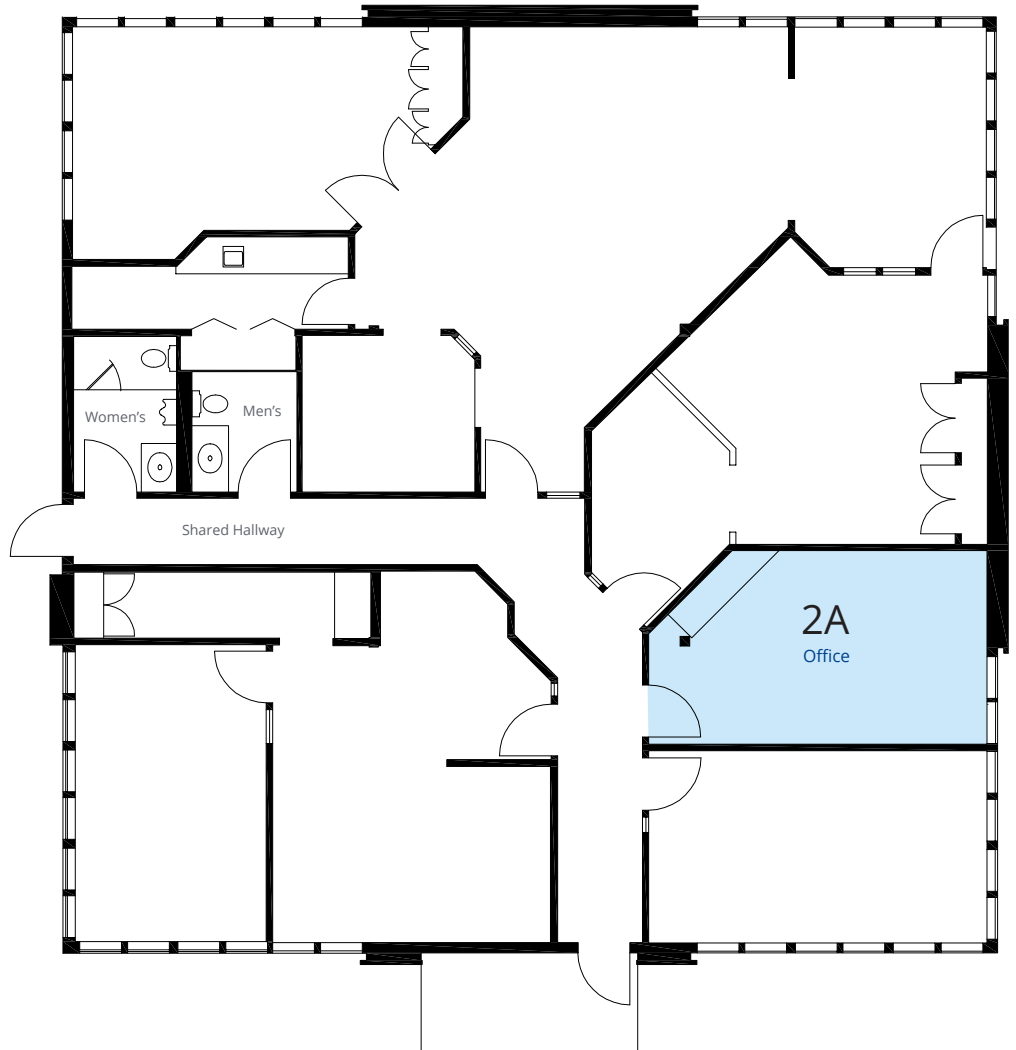
1042 Country Club Drive | Moraga, CA

Suite 2A | ±262 RSF



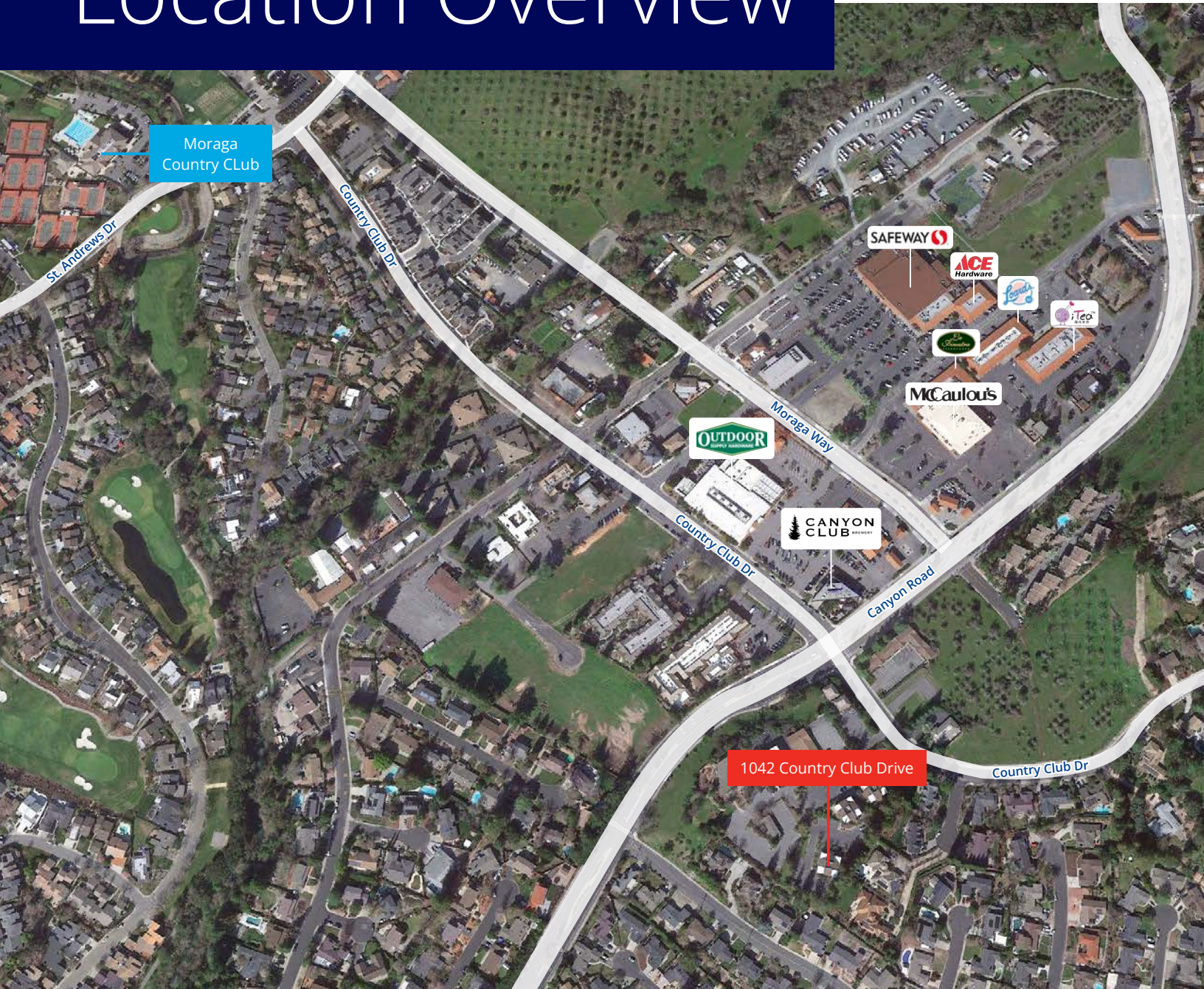
Rental Rate:
\$2.50/RSF

(full-service net suite janitorial)



1042 Country Club Drive | Moraga, CA

Location Overview



Contact Broker

Jeffrey Weil, ccim
Executive Vice President
CA License No. 00786195
jeff.weil@colliers.com
+1 925 389 2194

Colliers
1850 Mt Diablo Blvd, Suite 200
Walnut Creek, CA 94596
colliers.com

This document has been prepared by Colliers for advertising and general information only. Colliers makes no guarantees, representations or warranties of any kind, expressed or implied, regarding the information including, but not limited to, warranties of content, accuracy and reliability. Any interested party should undertake their own inquiries as to the accuracy of the information. Colliers excludes unequivocally all inferred or implied terms, conditions and warranties arising out of this document and excludes all liability for loss and damages arising there from. This publication is the copyrighted property of Colliers and /or its licensor(s). © 2025. All rights reserved. This communication is not intended to cause or induce breach of an existing listing agreement.