

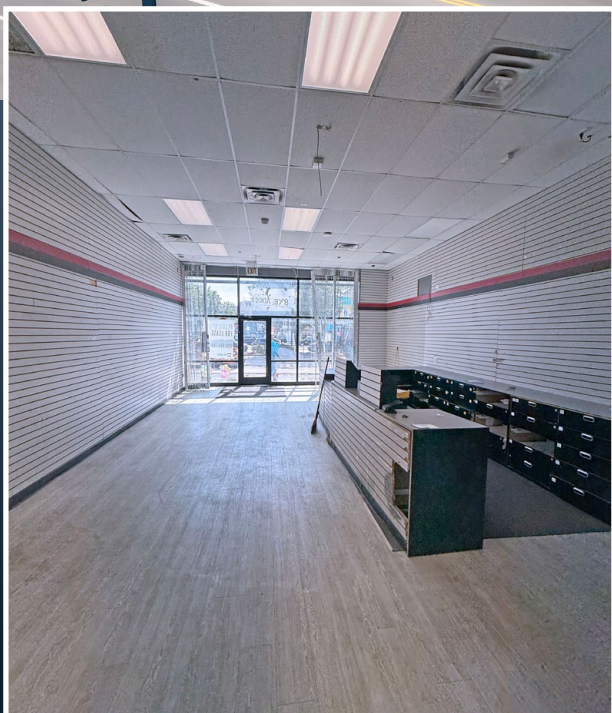
FOR LEASE | WICKER PARK RETAIL

2500 W North Ave

CHICAGO, IL



1,138 SQUARE FEET AVAILABLE IMMEDIATELY



PROPERTY DESCRIPTION

Rare opportunity to secure the only remaining available space in the highly desirable shopping center located at 2500 W. North Ave. The intersection of Western Avenue and North Avenue draws approximately 52,700 vehicles per day, resulting in high visibility for stores and businesses. At 1,138 SF, this space is perfect for any retailer that wants a highly visible Wicker Park/Humboldt Park location.

HIGHLIGHTS

- 1,138 SF of open space
- Freshly paved parking lot for easy accessibility
- Vanilla Box delivery, ready for the next user
- T.I. Available*
- Long-term neighboring tenants
- Ideal for coffee shop, juice bar, fast food, and more

LEASE RATE

Negotiable

📍 2500 W North Ave,
Chicago, IL 60647

AREA TENANTS

PT Solutions
HR Block
Windy City Car Wash

Walgreens
AutoZone



2500 W North Ave
1,138 SF Available

FAMILY DOLLAR
my family, my family dollar

Gander

Pizza Hut
H&R BLOCK
SUBWAY
Dental 360

Walgreens

CHIPOTLE
MEXICAN GRILL

ANYTIME FITNESS

CIRCLE K

msufcu
MSU FEDERAL CREDIT UNION

LAUGHON

BAKE°

W North Ave (52,700 VPD)

Germak
PRODUCE

Boulevard
Sports Lounge

total
wireless

metro
by T-Mobile

rangoli

Dubu
So Gong

AutoZone

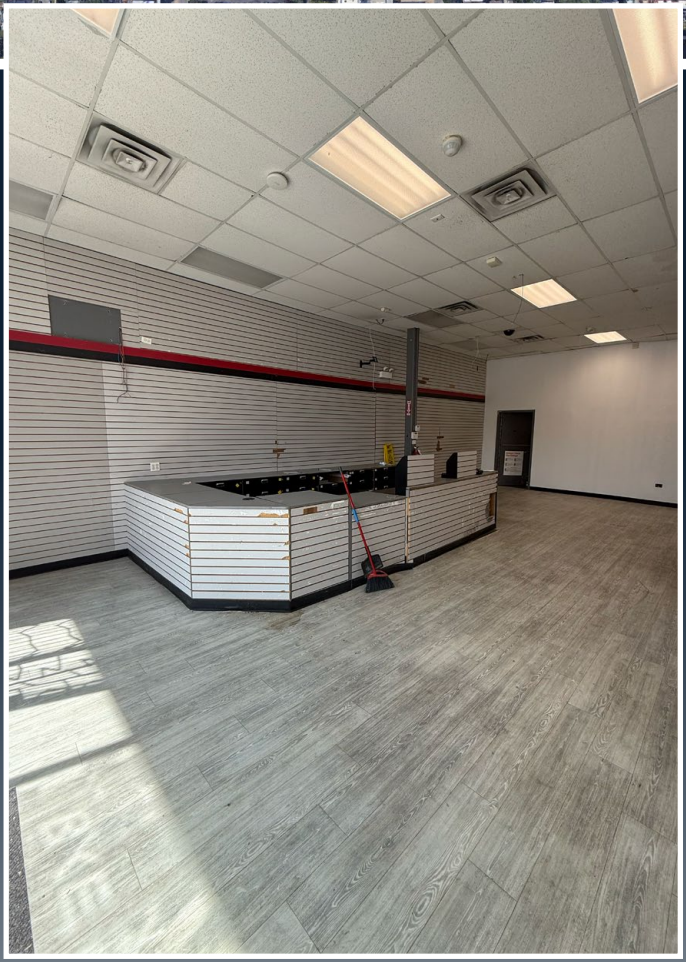
BON
BON

HANDLEBAR

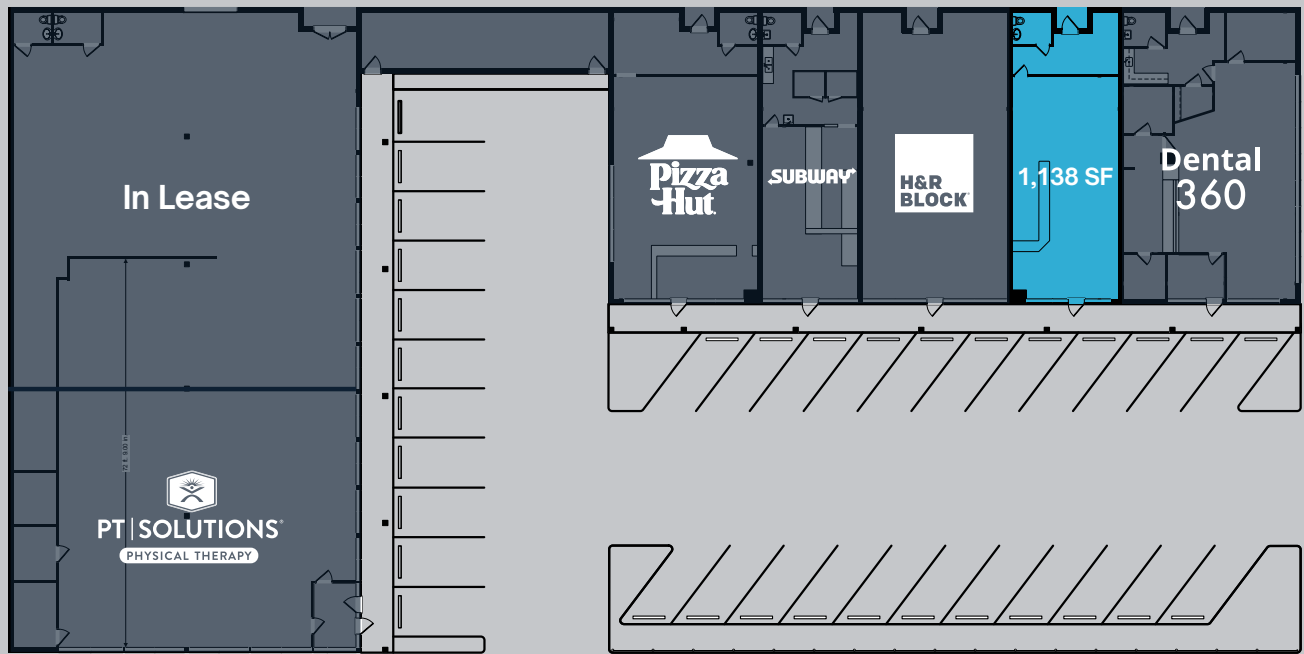
Izakaya
Shinya

SKIN
STUDIO

RITUAL
HOT YOGA




QUADREL
COMMERCIAL



ERIC TURRIN


Managing Partner


 eturrin@quadrelcommercial.com

 (317) 372-8727

CHUCK DICKSTEIN

Managing Director

 cdickstein@quadrelcommercial.com

 (847) 651-1470

