

# THE CARPENTER BUILDING OFFICE FOR LEASE

106 SW 7th Street | Des Moines, Iowa



## OVERVIEW

Located along the MLK corridor near the new soccer stadium, Principal Park and the new Market District Park, the Carpenter would be the perfect location for an office user. The building contains 50,000 square feet. Surface parking available. Potential build-to-suit.

## FEATURES

- Free parking
- \$7.00 PSF space for lease
- CAMIT \$11.00
- Turn-key ready

## DEMOGRAPHICS

ESRI 2024	3 mile	5 mile
Population	100,728	212,377
Avg. HH Income	\$82,354	\$87,144

## FOR MORE INFORMATION:

Tim Rypma | Cell: 515-419-1445  
Email: [tim@buyersrealtyinc.com](mailto:tim@buyersrealtyinc.com)



4350 Westown Parkway Suite 100 West Des Moines, IA 50266  
[www.buyersrealtyinc.com](http://www.buyersrealtyinc.com) 515-277-4000

BUYERS REALTY INC.

# THE CARPENTER BUILDING OFFICE FOR LEASE

106 SW 7th Street | Des Moines, Iowa



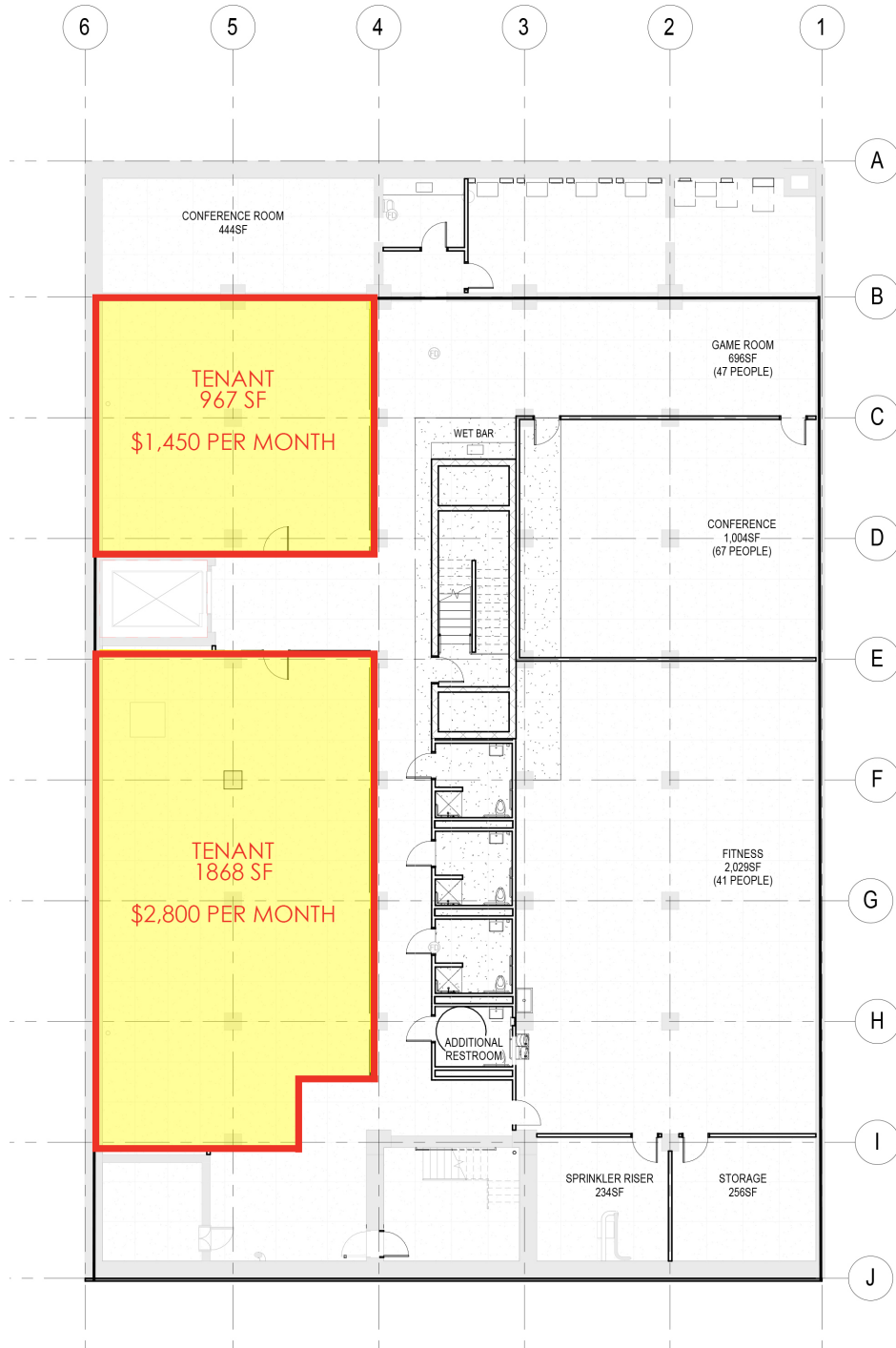
4350 Westown Parkway Suite 100 West Des Moines, IA 50266  
www.buyersrealtyinc.com 515-277-4000



# THE CARPENTER BUILDING OFFICE FOR LEASE

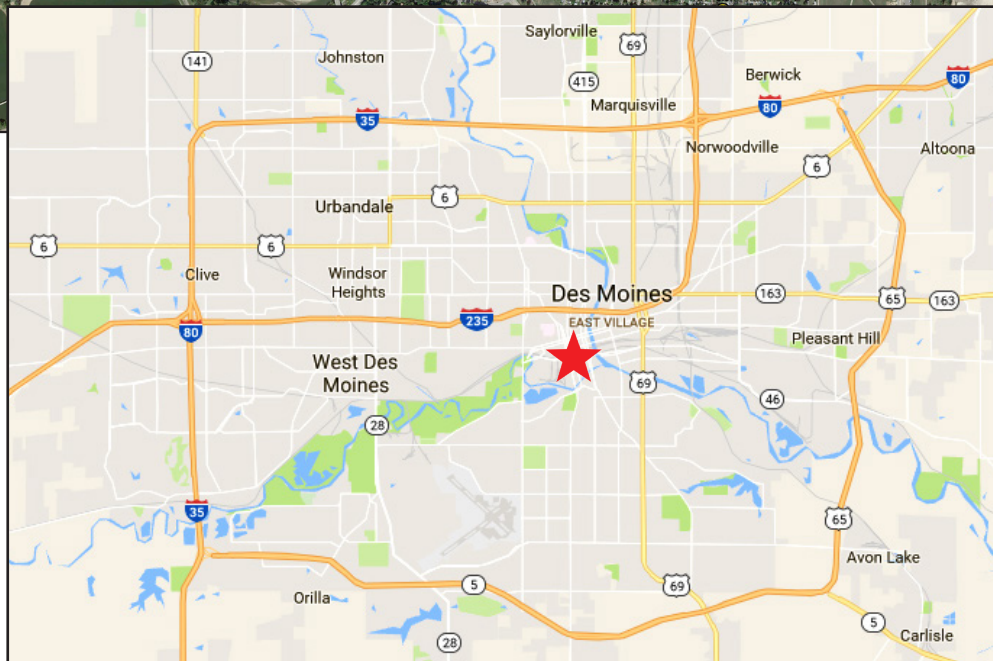
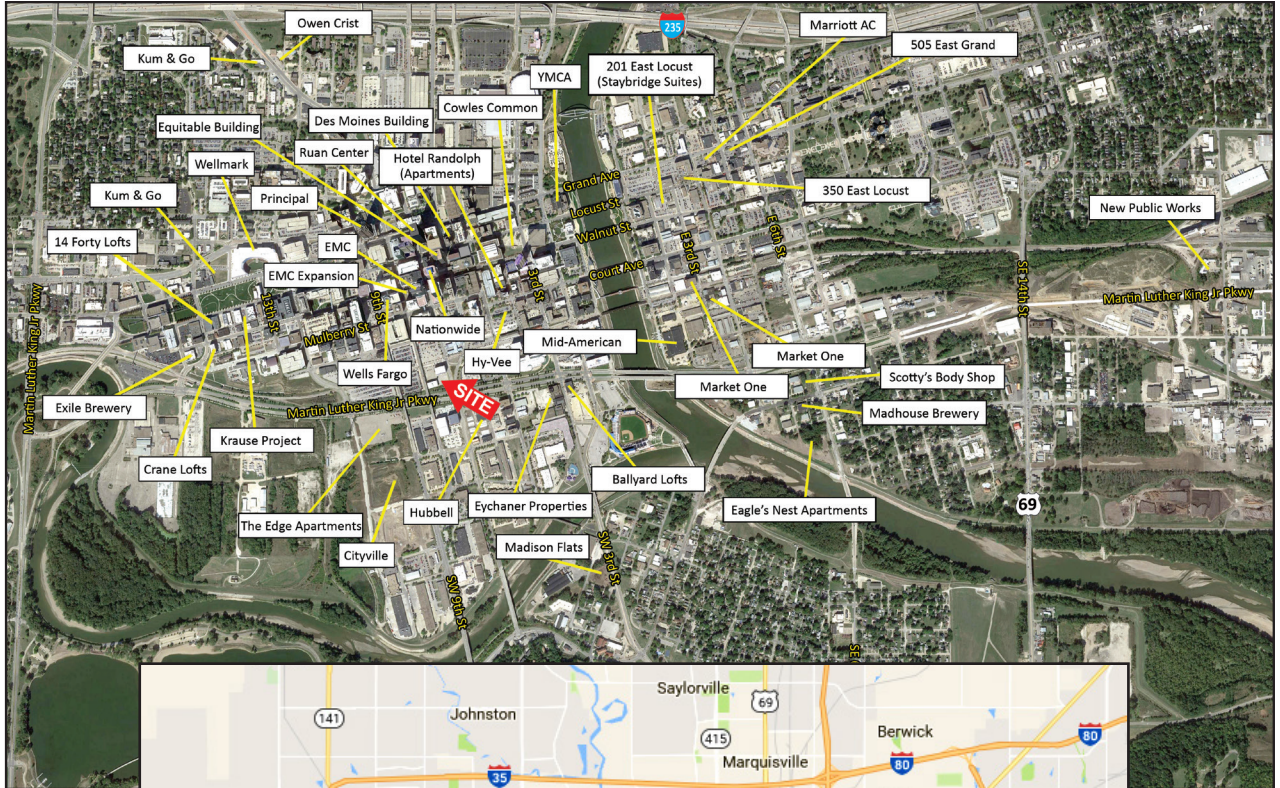
106 SW 7th Street | Des Moines, Iowa

## BASEMENT STUDY PLAN



# THE CARPENTER BUILDING OFFICE FOR LEASE

106 SW 7th Street | Des Moines, Iowa



## FOR MORE INFORMATION:

Tim Rypma | Cell: 515-419-1445  
Email: [tim@buyersrealtyinc.com](mailto:tim@buyersrealtyinc.com)

A MEMBER OF  
**CHAINLINKS**  
RETAIL ADVISORS



4350 Westown Parkway Suite 100 West Des Moines, IA 50266  
[www.buyersrealtyinc.com](http://www.buyersrealtyinc.com) 515-277-4000