



# FLEX/OFFICE SUITE

1615 ROBIN CIRCLE | FOREST HILL, MARYLAND 21050

FOR  
LEASE

2,500 SF ± AVAILABLE

1615  
Robin Circle



**MACKENZIE**

COMMERCIAL REAL ESTATE SERVICES, LLC



# PROPERTY OVERVIEW

## HIGHLIGHTS:

- 2,500 SF  $\pm$  1st floor flex/office space
- Ample surface parking
- Short drive to Downtown Bel Air
- Easy access to Routes 1, 23 and 24
- Nearby amenities include Wawa, Walgreens, 7-Eleven, Wendy's, Waffle House, Giant Food, Planet Fitness, Chipotle, Royal Farms, McDonald's, Chick-fil-A, ShopRite, Redner's, The Hickory Lodge

AVAILABLE:

2,500 SF  $\pm$  (SUITE 1A)

BUILDING SIZE:

39,367 SF  $\pm$

YEAR BUILT:

1973 (RENOVATED 2005)

LOADING:

1 LOADING DOCK

PARKING:

50 SPACES (1.20/1,000 SF)

ZONING:

GI (GENERAL INDUSTRIAL DISTRICT)

RENTAL RATE:

\$2,500/MO. + UTILITIES

ENTRANCE



REAR LOADING





# AERIAL



ROBIN CIR

MELROSE LN

**2,500 SF ±**  
SUITE 1A





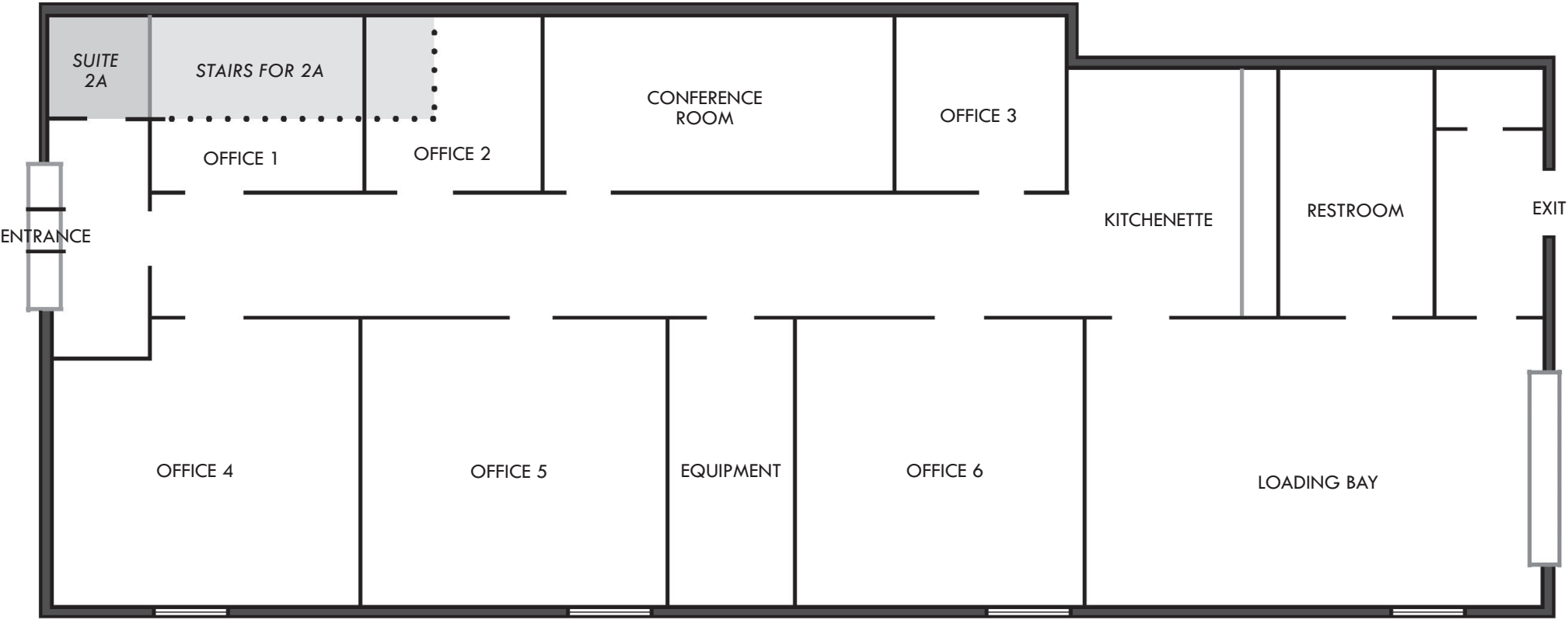
GOOGLE STREET VIEW





# FLOOR PLAN: SUITE 1A

2,500 SF ±  
AVAILABLE





# LOCAL MARKET AERIAL





# FOR MORE INFO **CONTACT:**



## **MIKE RUOCCO**

*SENIOR VICE PRESIDENT & PRINCIPAL*

**410.494.4868**

**MRUOCCO@mackenziecommercial.com**



## **PATRICK J. SMITH**

*REAL ESTATE ADVISOR*

**847.346.2701**

**PJSMITH@mackenziecommercial.com**



# **MACKENZIE**

COMMERCIAL REAL ESTATE SERVICES, LLC

**410-821-8585**

**2328 W. Joppa Road, Suite 200  
Lutherville, MD 21093**

OFFICES IN: ANNAPOLIS, MD BALTIMORE, MD BEL AIR, MD COLUMBIA, MD **LUTHERVILLE, MD** CHARLOTTESVILLE, VA

**[www.MACKENZIECOMMERCIAL.com](http://www.MACKENZIECOMMERCIAL.com)**



VISIT **PROPERTY PAGE** FOR MORE INFORMATION.

No warranty or representation, expressed or implied, is made as to the accuracy of the information contained herein, and same is submitted subject to errors, omissions, change of price, rental or other conditions, withdrawal without notice, and to any specific listing conditions imposed by our principals.