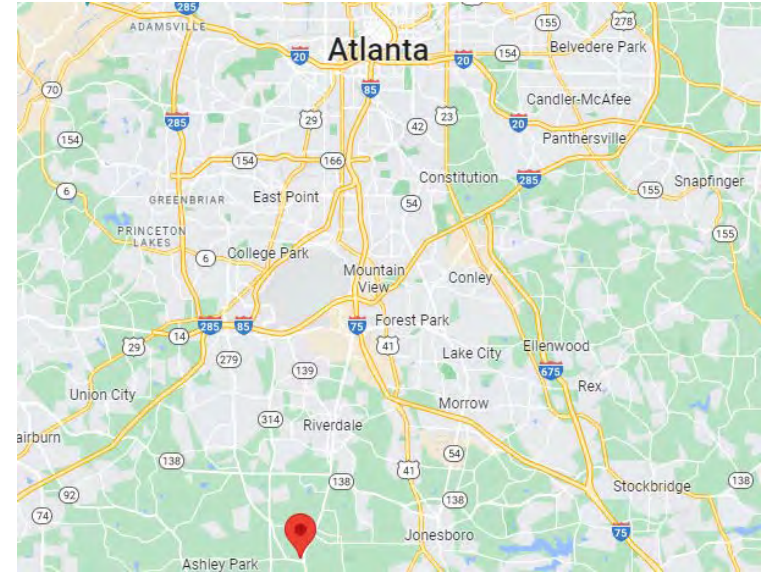


# RETAIL, OFFICE, & WAREHOUSE SPACE FOR LEASE

101 Kenwood Road, Fayetteville, GA, 30214

## PROJECT FEATURES & HIGHLIGHTS

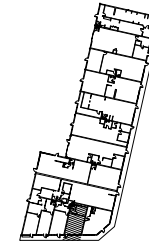
- 3,750 - 11,614 SF Spec Warehouses with Drive-In Doors
- 820 - 11,614 SF Retail/Office Opportunities
- 11K SF Fully Air-conditioned Retail Spec Suite w/ Drive-In & Dock-High Doors
- Close Proximity to I-85 & Hartsfield-Jackson Airport
- Aggressive Rate and Lease Terms
- Property Recently Renovated with New Paint, Signage, Parking Lots
- Building Signage Available



**Will Middour**  
404.290.9713  
WMIDDOUR@MIDDOURINVESTMENTS.COM

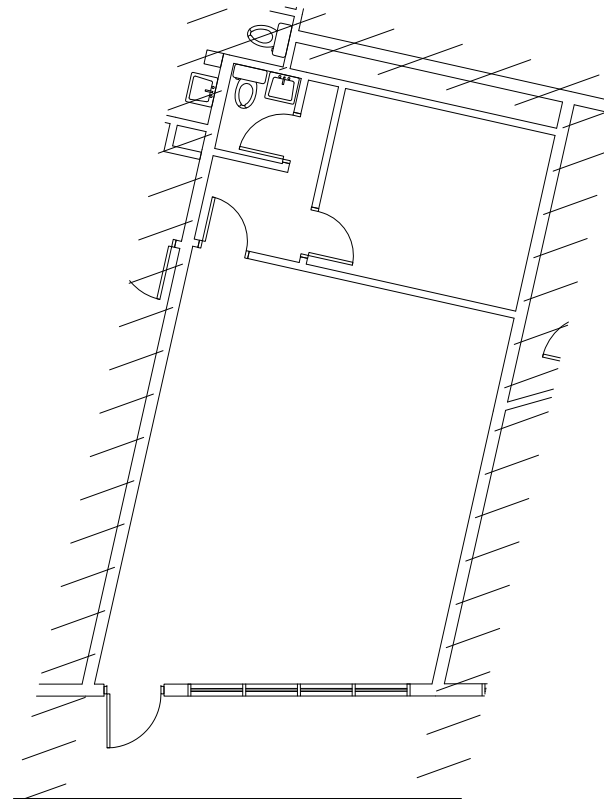
**Allie Schonberg**  
404.242.1660  
ASCHONBERG@MIDDOURINVESTMENTS.COM

**Middour Investments, LLC**  
www.middourinvestments.com  
3060 Peachtree Rd, Ste 1080 Atlanta, GA 30305

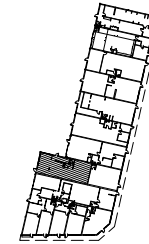


KEYPLAN

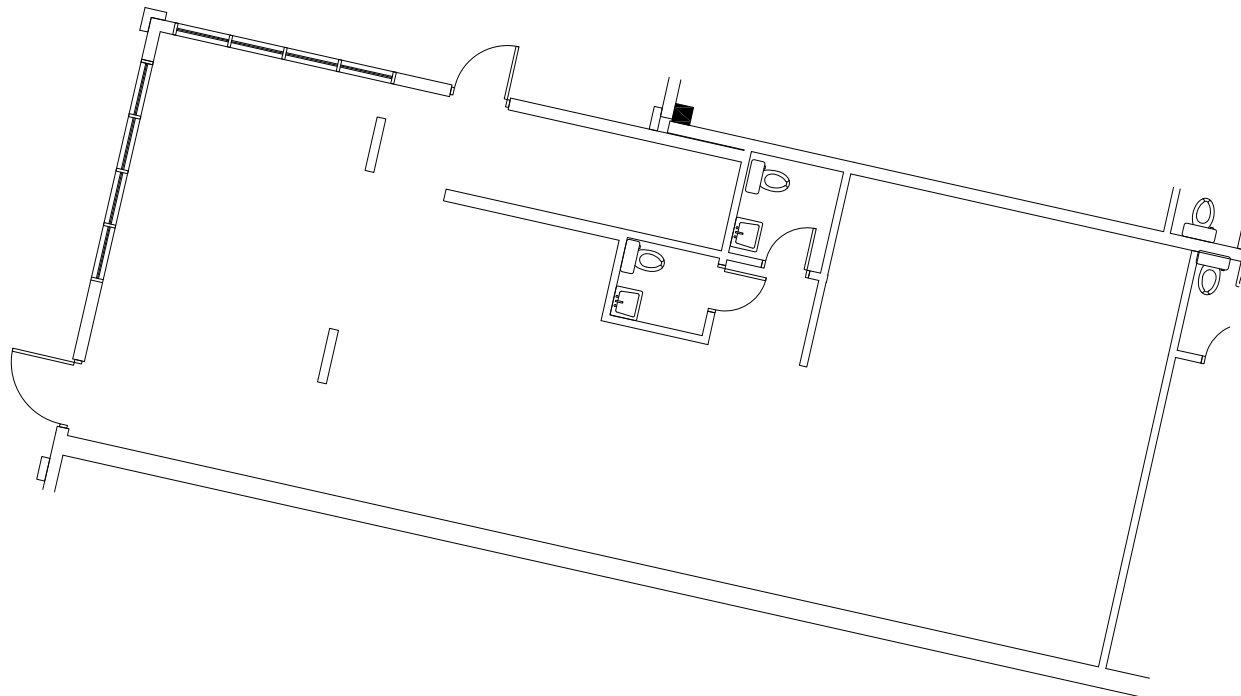
---



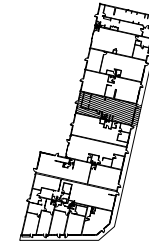
WILLIAM MIDDOUR 404.290.9713  
WMIDDOUR@MIDDOURINVESTMENTS.COM  
ALLIE SCHONBERG 404.242.1660  
ASCHONBERG@MIDDOURINVESTMENTS.COM



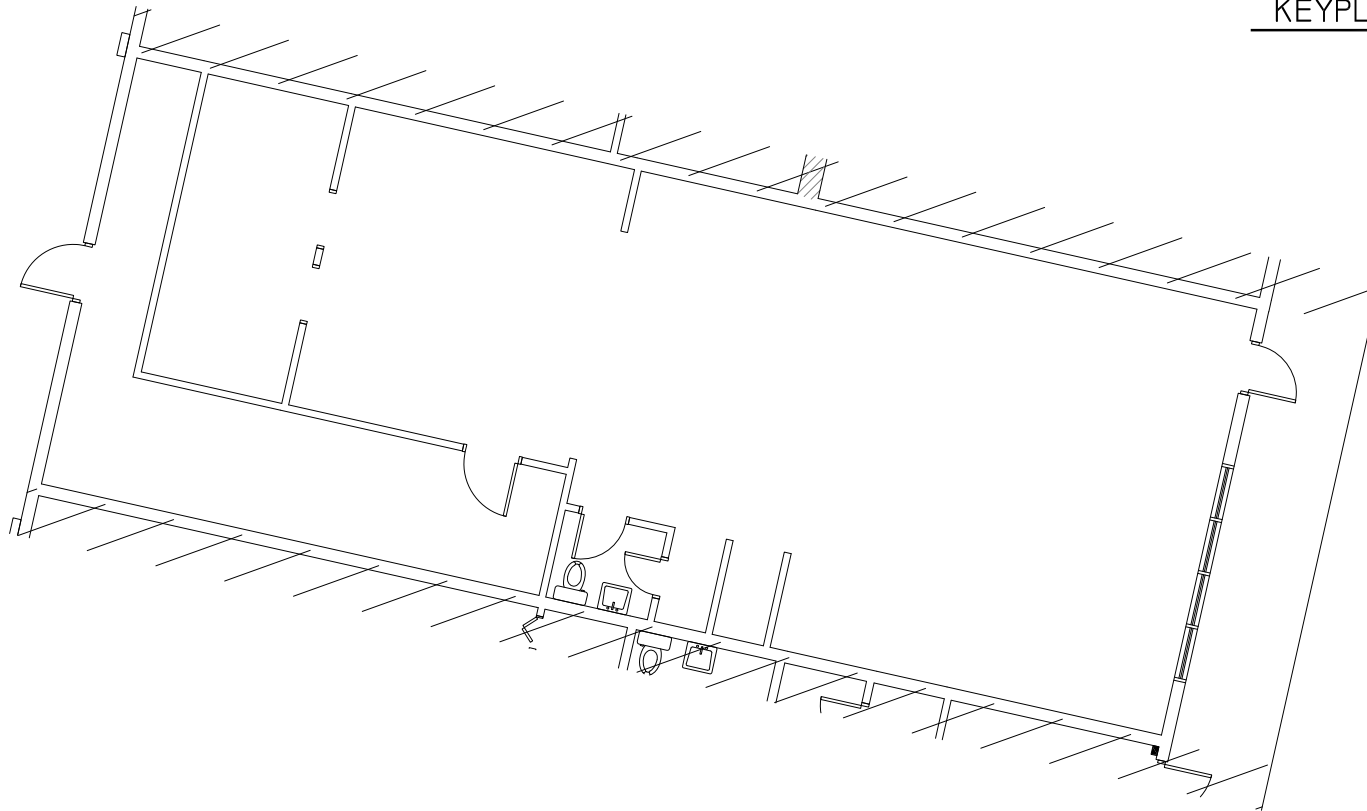
KEYPLAN



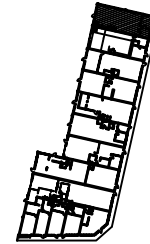
WILLIAM MIDDOUR 404.290.9713  
WMIDDOUR@MIDDOURINVESTMENTS.COM  
ALLIE SCHONBERG 404.242.1660  
ASCHONBERG@MIDDOURINVESTMENTS.COM



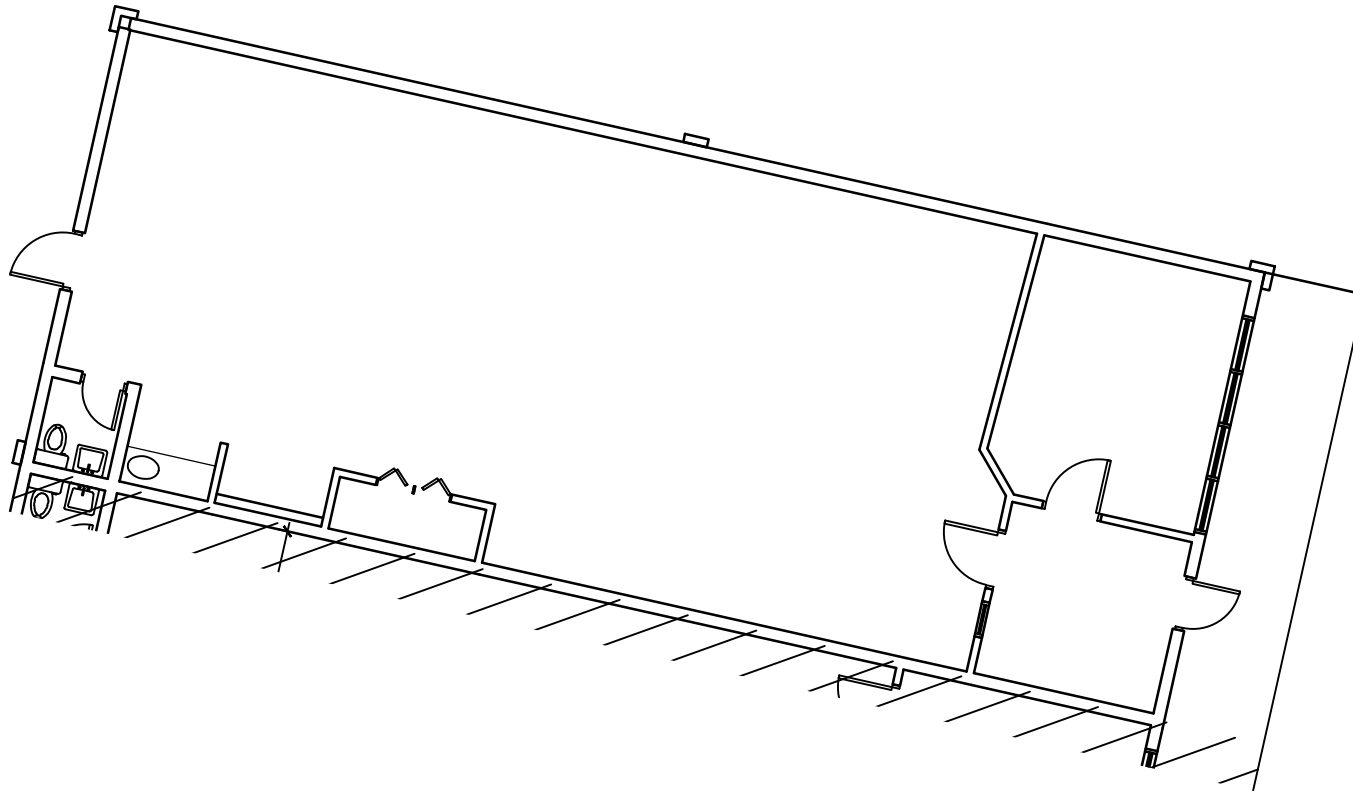
KEYPLAN



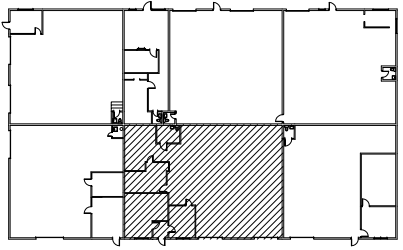
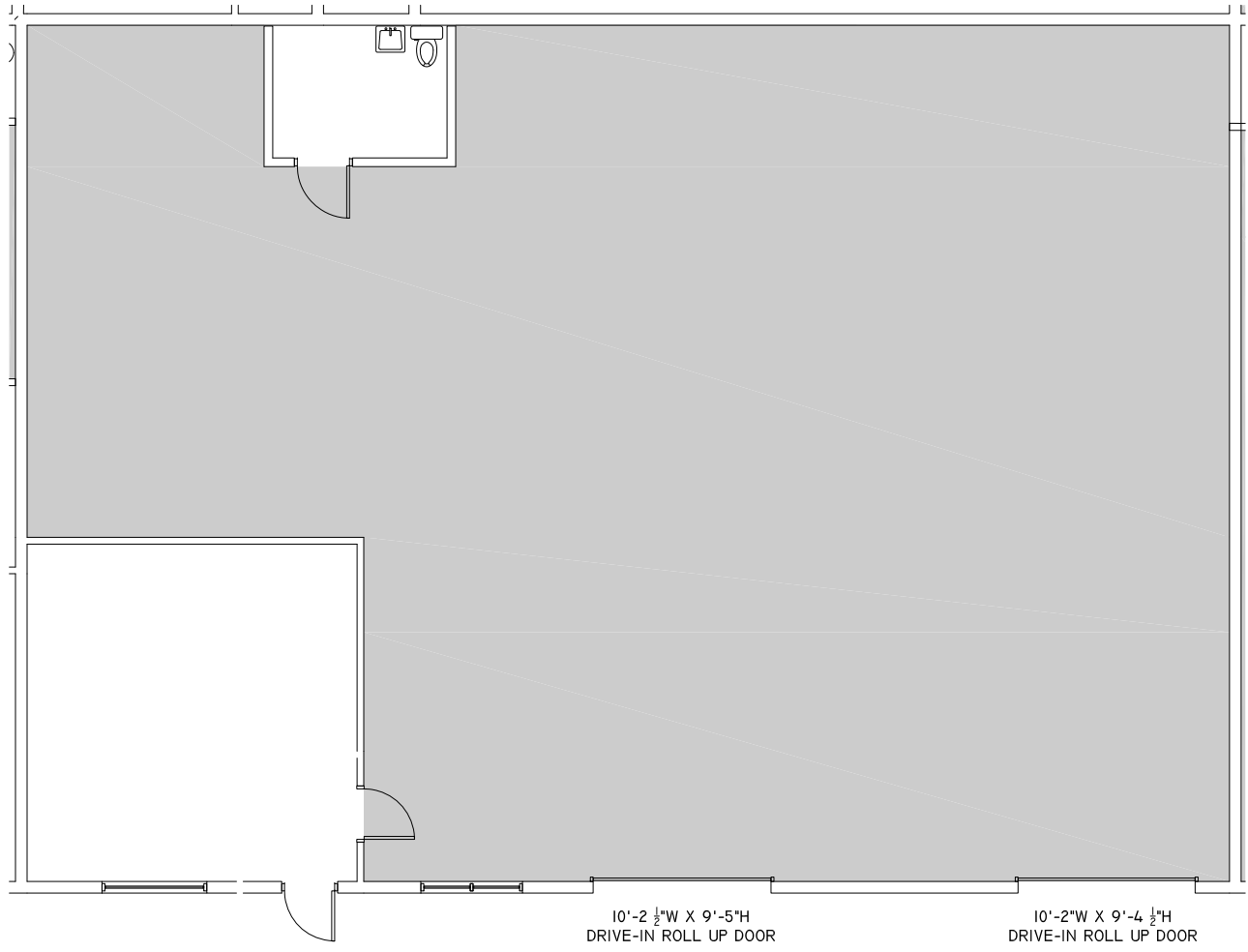
WILLIAM MIDDOUR 404.290.9713  
WMIDDOUR@MIDDOURINVESTMENTS.COM  
ALLIE SCHONBERG 404.242.1660  
ASCHONBERG@MIDDOURINVESTMENTS.COM



KEYPLAN



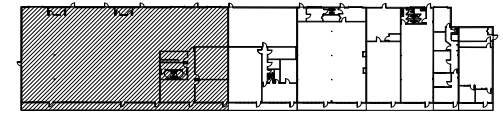
WILLIAM MIDDOUR 404.290.9713  
WMIDDOUR@MIDDOURINVESTMENTS.COM  
ALLIE SCHONBERG 404.242.1660  
ASCHONBERG@MIDDOURINVESTMENTS.COM



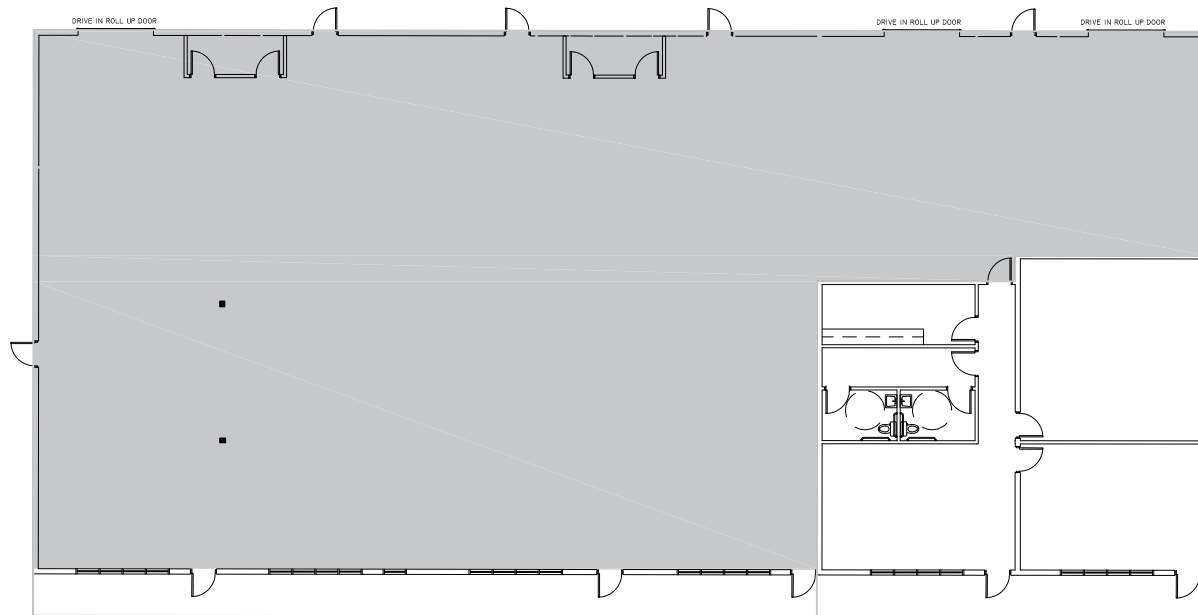
KEYPLAN



WILLIAM MIDDOUR 404.290.9713  
 WMIDDOUR@MIDDOURINVESTMENTS.COM  
 ALLIE SCHONBERG 404.242.1660  
 ASCHONBERG@MIDDOURINVESTMENTS.COM



KEYPLAN



WILLIAM MIDDOUR 404.290.9713  
WMIDDOUR@MIDDOURINVESTMENTS.COM  
ALLIE SCHONBERG 404.242.1660  
ASCHONBERG@MIDDOURINVESTMENTS.COM

