

PRICE REDUCTION

3027 26TH STREET | SAN FRANCISCO



FOR SALE | 1,820 SF BUILDING / FORMER RELIGIOUS FACILITY

Neither the Seller of the Property nor Maven Commercial, Inc., ("Broker") or any of their respective officers, employees or agents, make any representation or warranty, expressed or implied, as to the accuracy or completeness of this confidential information and no legal liability is assumed or shall be implied with respect thereto.

Maven Commercial, Inc., has not made any investigation, and makes no warranty or representation, with respect to the income or expenses for the subject Property, the future projected financial performance of the Property, the size and square footage of the Property and improvements, the presence or absence of contaminating substances, PCB's or asbestos, the compliance with State and/or Federal regulations, the physical condition of the improvements thereon, or the financial condition or business prospects of any tenant, or any tenant's plans or intentions to continue its occupancy of the subject property. Information provided has been or will be gathered from sources that are deemed reliable; however, neither Seller nor the Broker warrants or represents that the information is true or correct.

Recipients are advised to verify information independently and hire all applicable professionals and experts to assess the Property's physical and financial condition. Seller and/or the Brokers reserve(s) the right to change the Property's purchase price, or any information provided, or to withdraw the Property from the market at any time without notice. Recipients agree that the information provided by Seller and/or Broker is confidential and, as such, agrees to hold and treat such information in the strictest of confidence. Visual presentation of parcel lines are not exact.

CONTACT

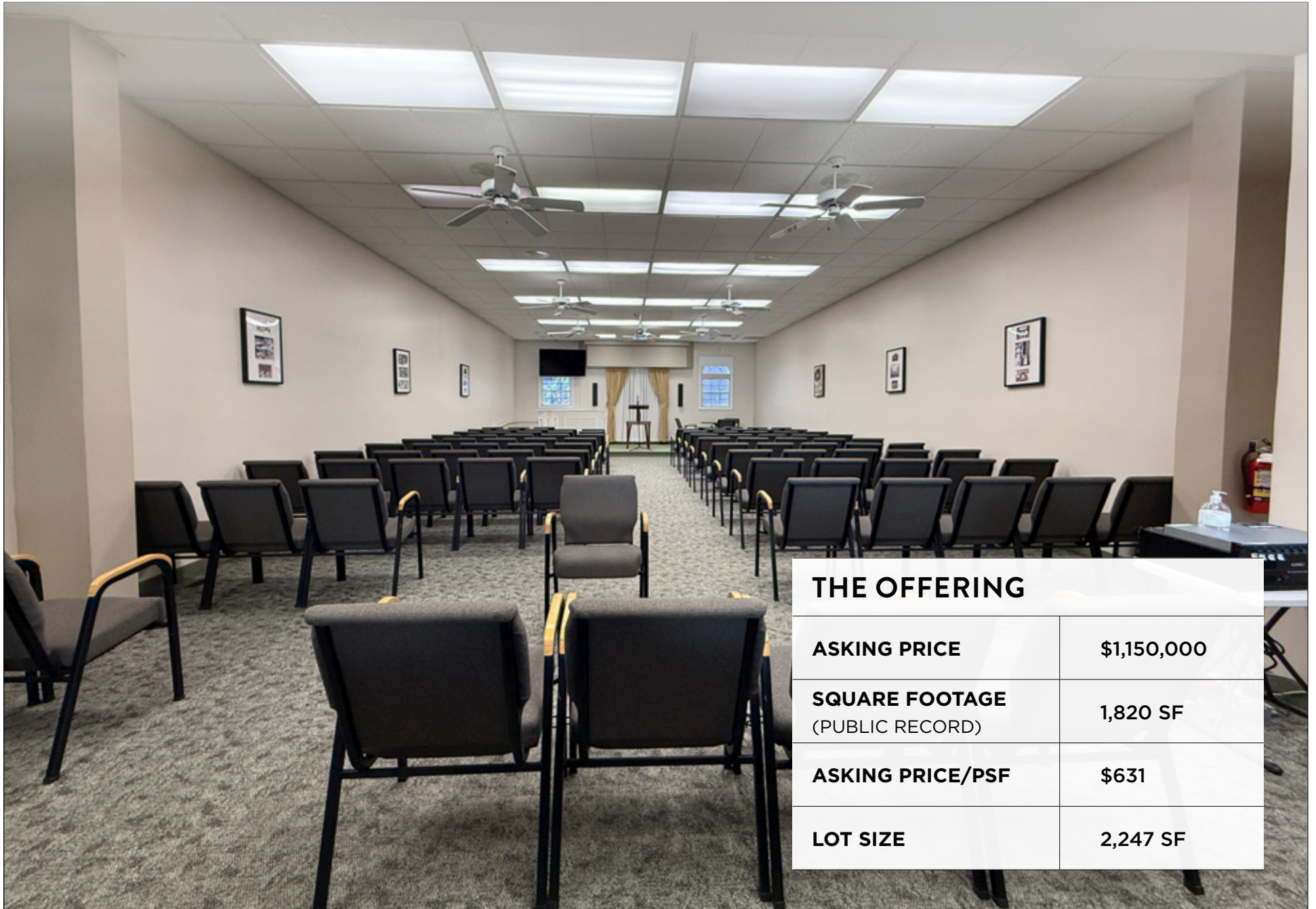
DOMINIC MORBIDELLI

dom@mavenproperties.com
415.404.7314
DRE #02024348

SANTINO DEROSE

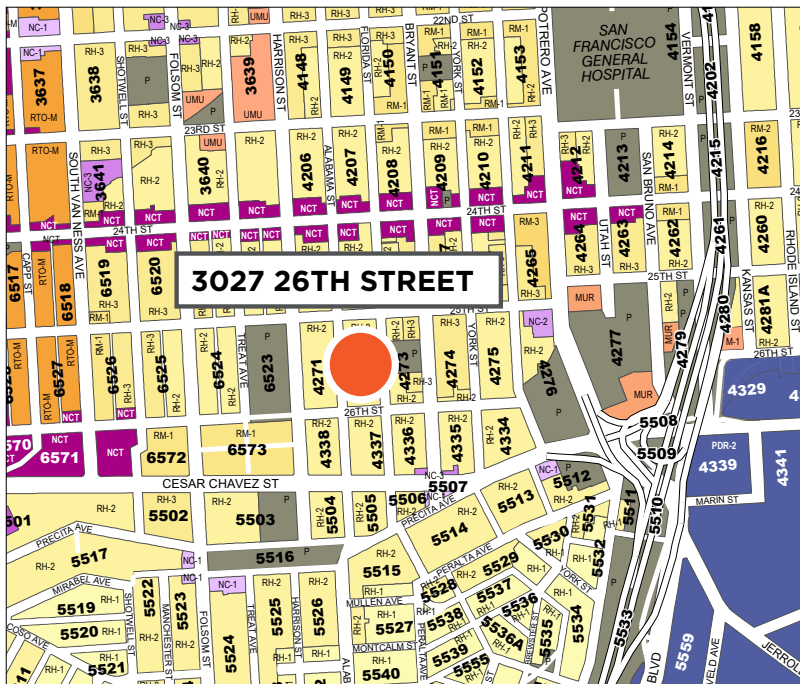
sd@mavenproperties.com
415.404.7337
DRE #01338326



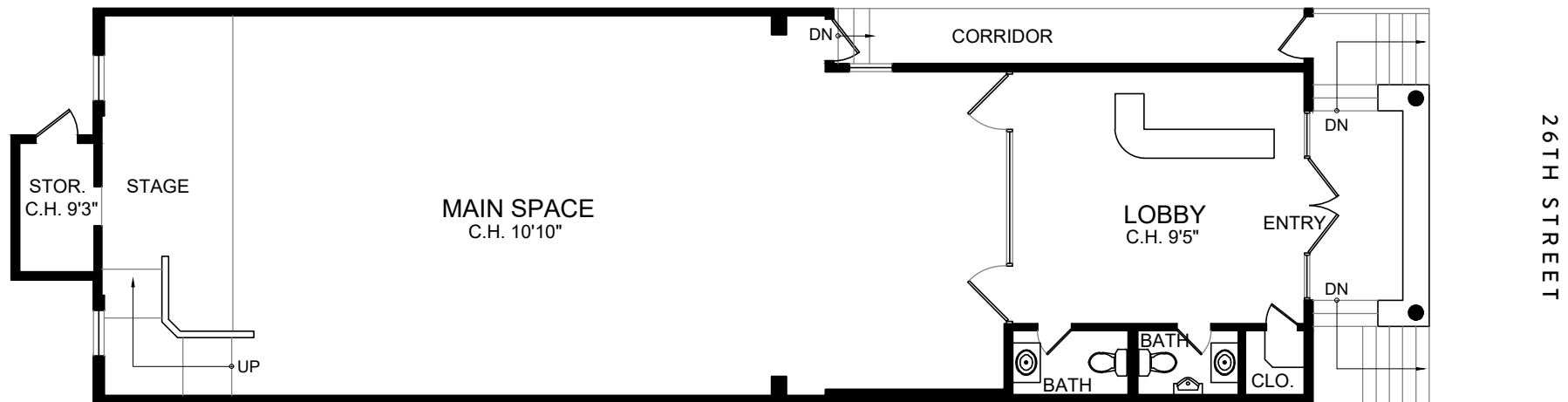


THE OFFERING	
ASKING PRICE	\$1,150,000
SQUARE FOOTAGE (PUBLIC RECORD)	1,820 SF
ASKING PRICE/PSF	\$631
LOT SIZE	2,247 SF

ADDRESS	3027 26TH STREET, SAN FRANCISCO, CA
PROPERTY SUBTYPE	1924
DISTRICT	Mission
PROPERTY SUBTYPE	Religious, Church, Worship
ZONING	RH-2
APN	4337-001H



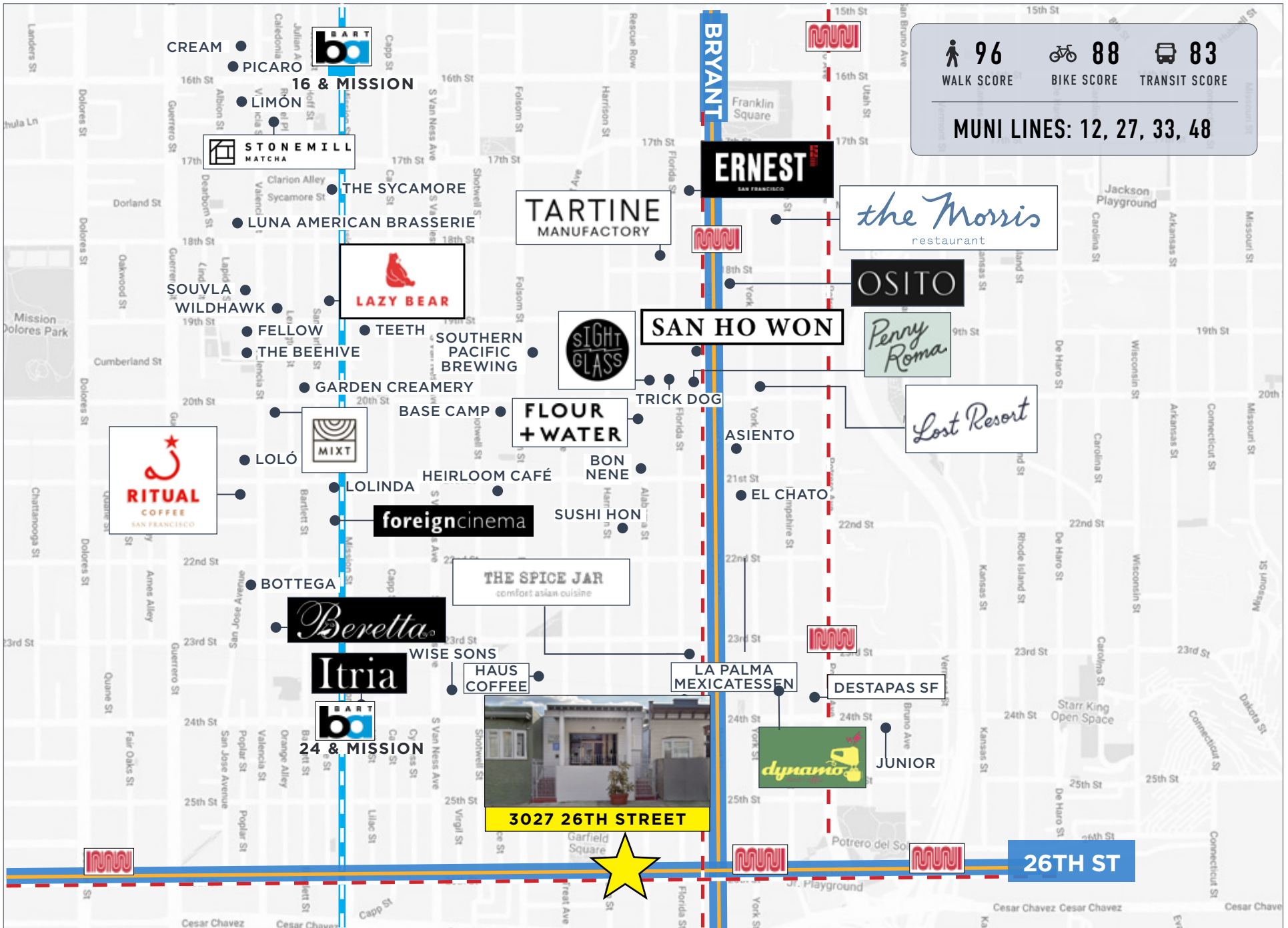




FEATURES

- 1,820 SF
- Open floorplan
- 2 blocks from busily 24th Street
- Easy access to BART/MUNI
- Access to parks and open spaces for outdoor activities







THE FOLD CAFE



FOREIGN CINEMA



EL CHATO



PRECITA SOCIAL



TRICK DOG



BERETTA VALENCIA



THE SPICE JAR



FLOUR + WATER



DESTAPAS



LOST RESORT



SUSHI HON



LIMONCELLO



maven
RETAIL • OFFICE • INDUSTRIAL

CONTACT

DOMINIC MORBIDELLI
dom@mavenproperties.com
415.404.7314
DRE #02024348

SANTINO DEROSE
sd@mavenproperties.com
415.404.7337
DRE #01338326

NOTICE: This information has been secured from sources we believe to be reliable but we make no representations, warranties, express or implied, as to the accuracy of the information. Listing broker has been given enough information to provide only a preliminary interest in the property. The materials are not to be considered fact. The information contained herein is not a substitute for thorough due diligence investigation. References to square footage, zoning, use, or age are approximate. Please contact the San Francisco Planning Department to verify zoning at (415) 558-6378, as neither broker or landlord represent that this space is suitable for your use. Tenant or Buyer must verify the information at their own expense and bears all the risk for any inaccuracies. By receiving these materials you are agreeing to the disclaimers set forth herein. DRE#01878802

466 Green Street Suite 203
San Francisco, CA 94133
415-781-770
www.mavenproperties.com
