



SPACES FOR LEASE

360 St Peter Street, Unit 4

Downtown St. Paul

9,666 SQFT | DIVISABLE SPACES | TRIPLE NET LEASE





360 St Peter Street,

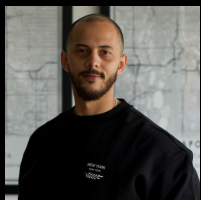
Make your mark in one of St. Paul's most storied buildings. This ground-level retail/restaurant/office space at the Lowry Building offers up to 9,666 SF of versatile use with charming architecture, corner visibility, and incredible walkability.

The space can be leased as one or divided into two suites (6,106 SF and 3,560 SF), ideal for boutique brands, upscale dining, or design-forward workspaces. Located near Rice Park, Xcel Energy Center, and major hotels, it's surrounded by constant activity. NNN lease - flexible terms and build-out options available for qualified tenants.





- Flexible layout: can be leased as one large space or split into two suites (6,106 SF and 3,560 SF), allowing tailored tenant solutions.
- NNN lease structure with flexible terms and build-out options, ideal for qualified tenants seeking long-term growth in a vibrant urban setting.



Mo Makroum

REALTOR®

M: 612.987.7519

mo.makroum@compass.com



Jado Hark

REALTOR®

M: 612.483.1742

jado.hark@compass.com

COMPASS

THE ELITE AGENCY TEAM