



6200 MCCLINTOCK



## MCCLINTOCK MEDICAL & DENTAL BUILDING

6200 S MCCLINTOCK DR. TEMPE, AZ

**MEDICAL & DENTAL SUITES AVAILABLE FOR IMMEDIATE OCCUPANCY**

**NEWMARK**

**FOR MORE INFORMATION PLEASE CONTACT:**

Kathleen Morgan | Managing Director | t 602-809-1048 | [kathleen.morgan@nmark.com](mailto:kathleen.morgan@nmark.com)



# AVAILABLE MEDICAL & DENTAL SUITES



**\$20 NNN**  
**3% ANNUAL INCREASE**

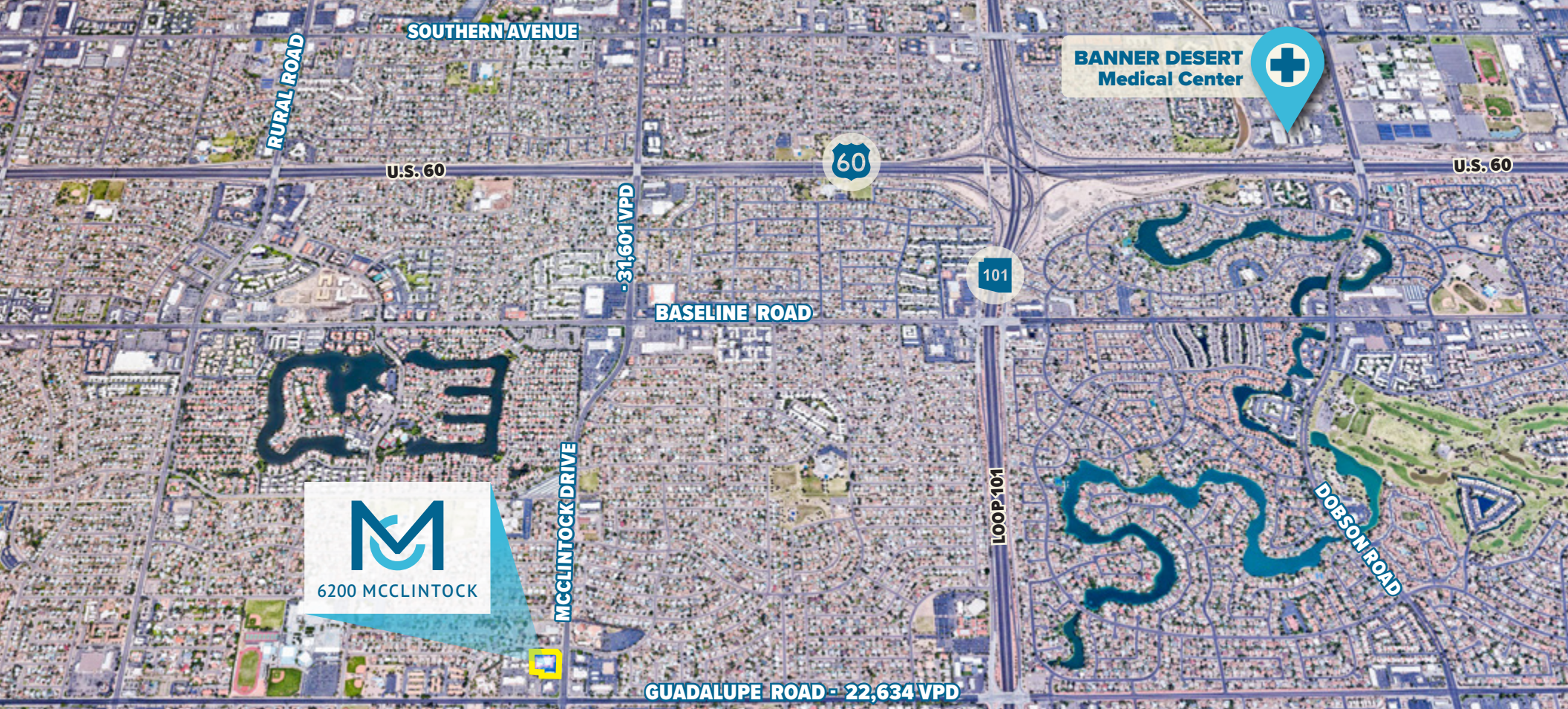
<b>Suite 105</b>	<b>±1,600 RSF</b> (Dental Space)
<b>Suite 106</b>	<b>±767 RSF</b>
<b>Suite 109</b>	<b>±1,800 RSF</b>
<b>Suite 111</b>	<b>±2,590 RSF</b> (Dental Space)
<b>Suite 113</b>	<b>±1,755 RSF</b>



**AVAILABLE FOR IMMEDIATE OCCUPANCY**

**NEWMARK**

**FOR MORE INFORMATION PLEASE CONTACT:**  
Kathleen Morgan | Managing Director | t 602-809-1048 | [kathleen.morgan@nrmk.com](mailto:kathleen.morgan@nrmk.com)



**M**  
6200 MCCLINTOCK

## WHAT WE OFFER AT MCCLINTOCK MEDICAL & DENTAL BUILDING

MCCLINTOCK MEDICAL & DENTAL BUILDING | 6200 S MCCLINTOCK DR. TEMPE, AZ



**EASY ACCESS**

to Loop 101 and U.S. 60



**SYNERGISTIC TENANT MIX**

including Dental, Orthodontics and Periodontics



**PROXIMITY TO HOSPITALS**

including Tempe St. Luke's (5.1 miles) and Banner Desert Medical Center (3.7 miles)



**GARDEN-STYLE OFFICE**

with Covered Courtyard



**PARKING RATIO 5.1:1000**

with Covered (Fee) and Uncovered Courtyard Parking Available

**NEWMARK**

**FOR MORE INFORMATION PLEASE CONTACT:**

Kathleen Morgan | Managing Director | t 602-809-1048 | kathleen.morgan@nrmk.com

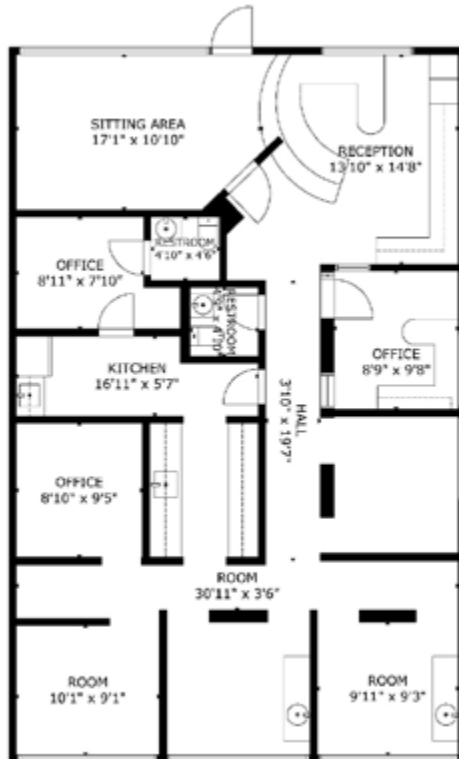
The information contained herein has been obtained from sources deemed reliable but has not been verified and no guarantee, warranty or representation, either express or implied, is made with respect to such information. Terms of sale or lease and availability are subject to change or withdrawal without notice.



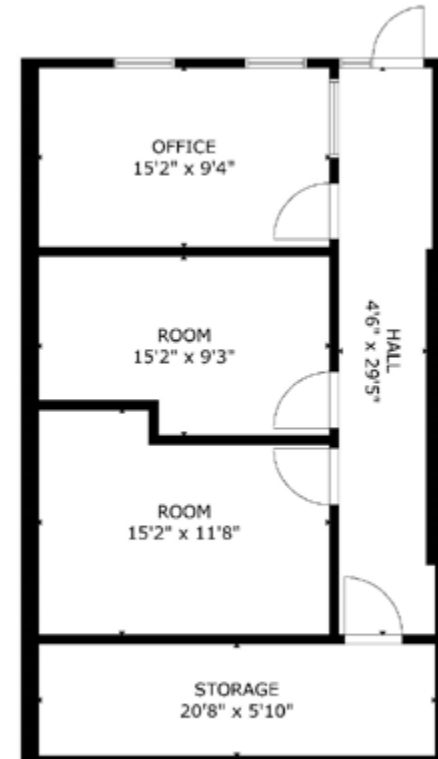
6200 MCCLINTOCK

AVAILABLE FOR IMMEDIATE OCCUPANCY

### SUITE 105: 1,600 RSF



### SUITE 106: 767 RSF





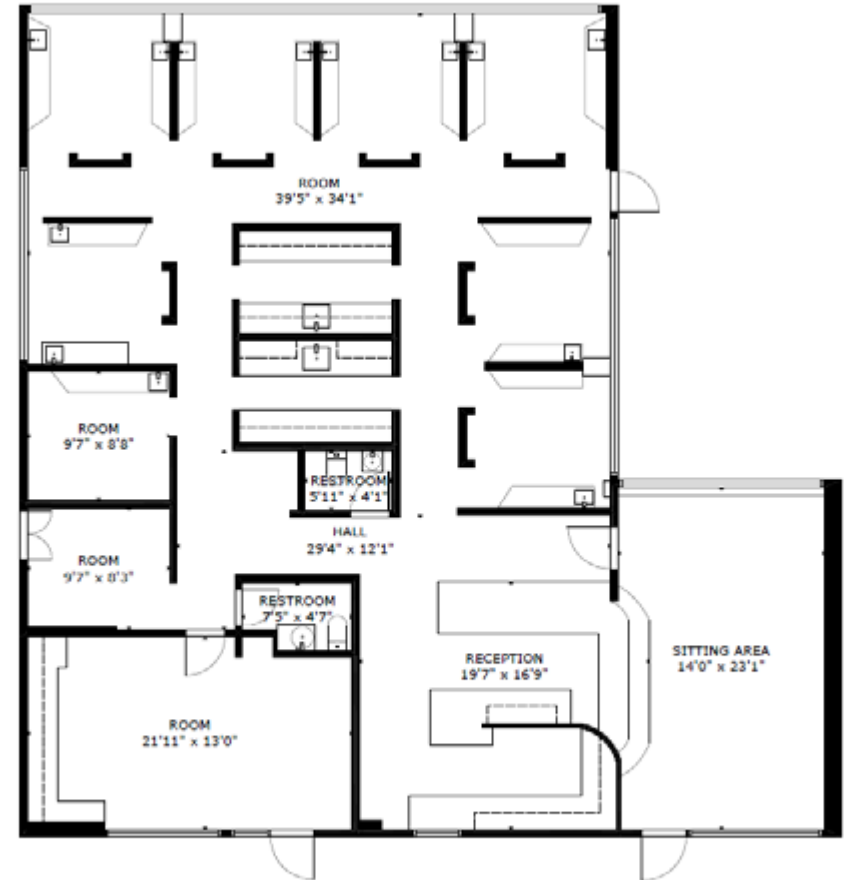
6200 MCCLINTOCK

AVAILABLE FOR IMMEDIATE OCCUPANCY

SUITE 109: 1,800 RSF



SUITE 111: 2,590 RSF

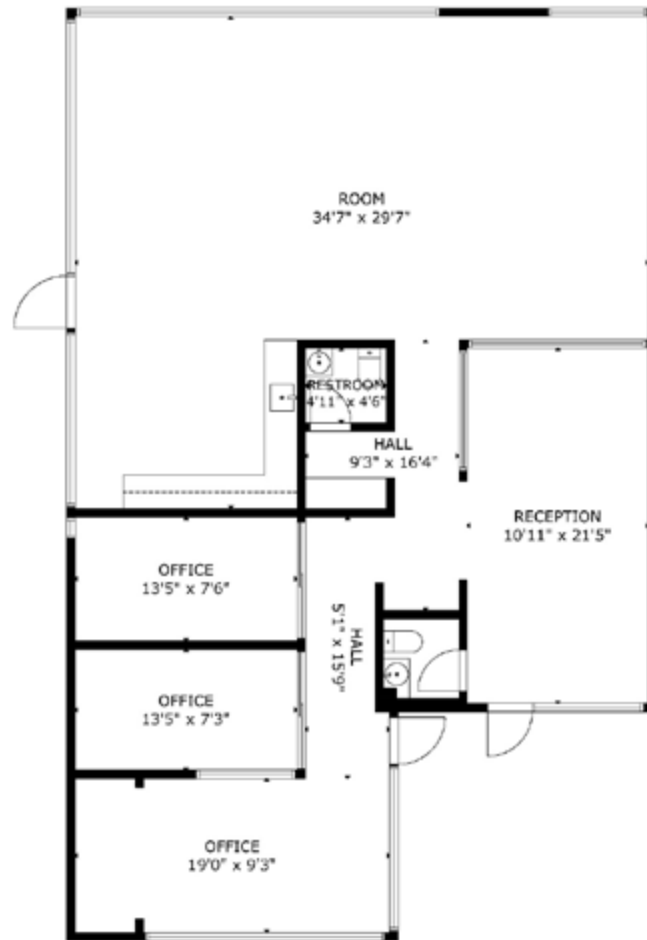




6200 MCCLINTOCK

AVAILABLE FOR IMMEDIATE OCCUPANCY

### SUITE 113: 1,700 RSF



NEWMARK

FOR MORE INFORMATION PLEASE CONTACT:  
Kathleen Morgan | Managing Director | t 602-809-1048 | kathleen.morgan@nrmk.com