




**7.49%
CAP RATE**

373 Meridian Parke Lane Greenwood, IN 46142

PROPERTY HIGHLIGHTS

 6,330 SF

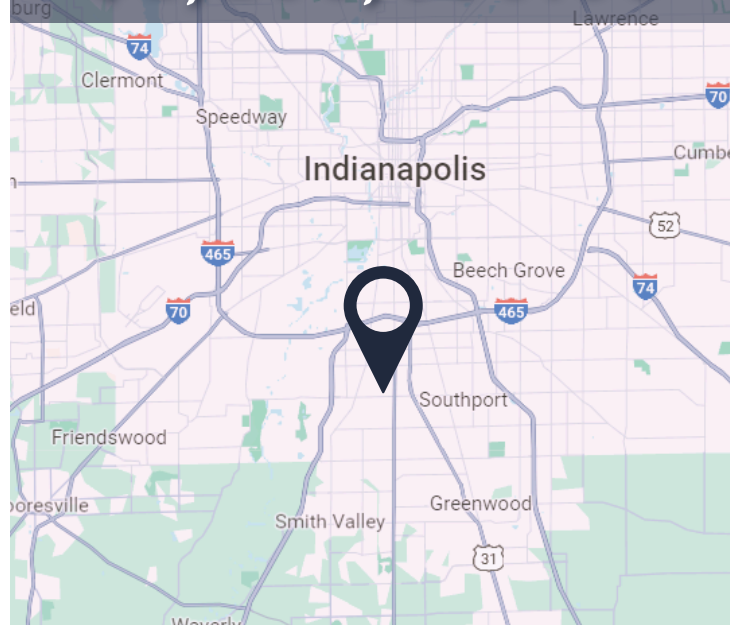
 Fully Leased - Office Condo
Three (3) individual suites

 Recent Improvements to Roof,
Gutters, Parking Lot and
Sidewalks

 Ideal Location, close proximity
to retail and main highways

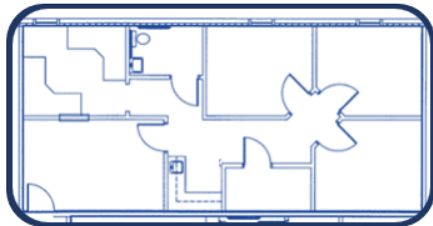
INVESTMENT
OPPORTUNITY

\$1,100,000.00

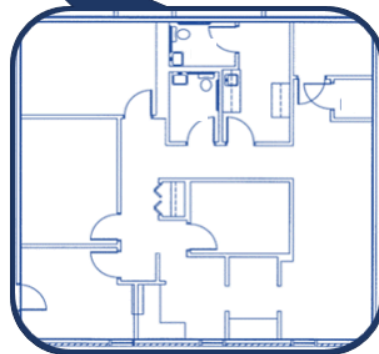
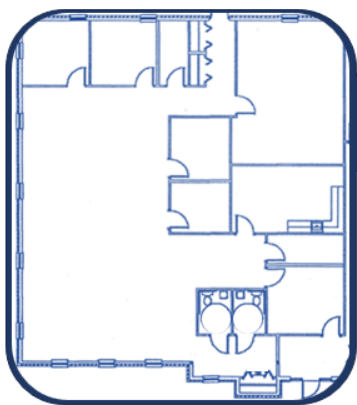




A-2
1,024 SQ. FT.



A-1
3,392 SQ. FT.



A-3
1,614 SQ. FT.

**GREAT
 LOCATION!**



Melissa Blackwell
 melissa@92cpartners.com
 317-384-9756

All information provided herein has been compiled from sources deemed reliable, however no representation or warranty, express or implied, is made as to the accuracy or completeness of the information contained herein, and is submitted subject to errors, omissions, change of price, rental or other conditions, withdrawal without notice, and to special listing conditions imposed by the property owner. An independent investigation is recommended for any interested parties.