

**60 PAGE ROAD
CLIFTON, NJ**

FOR LEASE
47,985 SQ. FT.



UNITED
REALTY ADVISORS, LLC
LICENSED REAL ESTATE BROKERS

JOHN FRIEDLAND MARK TANNEN
201-981-2745 201-913-2075

- ◆ 4,500 SQ. FT. OFFICES
- ◆ 16' CLEAR CEILING HEIGHT
- ◆ 4 LOADING DOCKS (EXPANDABLE)
- ◆ 2,500 AMP POWER SERVICE
- ◆ FULLY AIR-CONDITIONED
- ◆ 2.39 ACRES / 60 CAR PARKING
- ◆ M-2 INDUSTRIAL ZONING

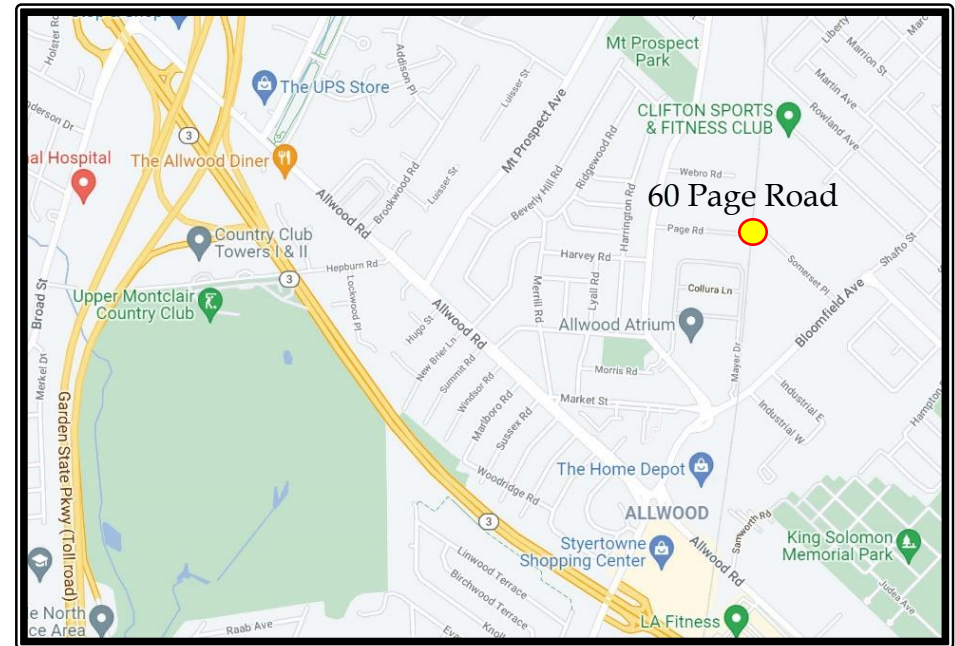
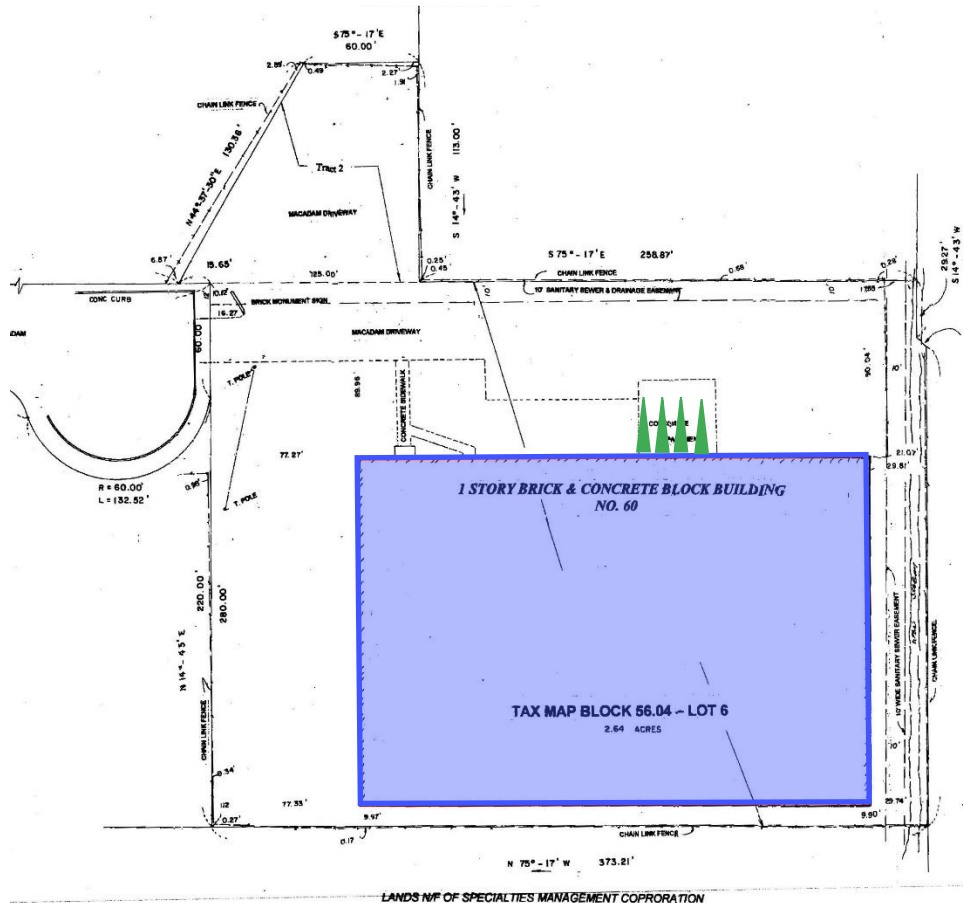


No warranty or representation, express or implied is made as to the accuracy of the information, including zoning, environmental, structural and sprinkler matters, and same is submitted subject to errors, omissions, change of price, rental or other conditions, withdrawal without notice, and to any special listing conditions imposed by the principal. Prospective purchasers/tenants are urged to conduct whatever investigation they, their attorneys and advisors deem necessary about the property, including but not limited to the above items.



60 PAGE ROAD CLIFTON, NJ

FOR LEASE 47,985 SQ. FT.



UNITED REALTY ADVISORS, LLC

LICENSED REAL ESTATE BROKERS

JOHN FRIEDLAND
201-981-2745

MARK TANNEN
201-913-2075



No warranty or representation, express or implied is made as to the accuracy of the information, including zoning, environmental, structural and sprinkler matters, and same is submitted subject to errors, omissions, change of price, rental or other conditions, withdrawal without notice, and to any special listing conditions imposed by the principal. Prospective purchasers/tenants are urged to conduct whatever investigation they, their attorneys and advisors deem necessary about the property, including but not limited to the above items.

