

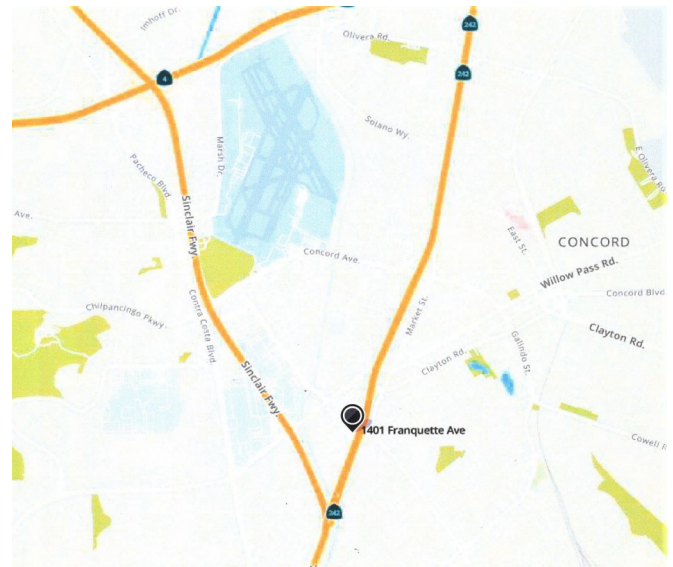
Light Industrial Space FOR LEASE

1381 Franquette Ave., Unit "C-1"
Concord, California



Property Information

- **ASKING LEASE RATE: \$1.50 PER SQ. FT. PER MO. INDUSTRIAL GROSS**
- **4,911 +/- SQ. FT. LIGHT INDUSTRIAL SPACE FOR LEASE IN CENTRAL CONCORD**
- **BUILDOUT INCLUDES, RECEPTION, ONE LARGE OPEN OFFICE AREA, RESTROOM**
- **ONE 12' WIDE X 14' HIGH ROLL-UP DOOR**
- **18' CL. HT., INSULATION, SKYLIGHTS**
- **100 AMP 120/208 VOLT 3 PHASE POWER**
- **GREAT CENTRAL CONCORD LOCATION, PROJECT FRONTS ON HIGHWAY 242**

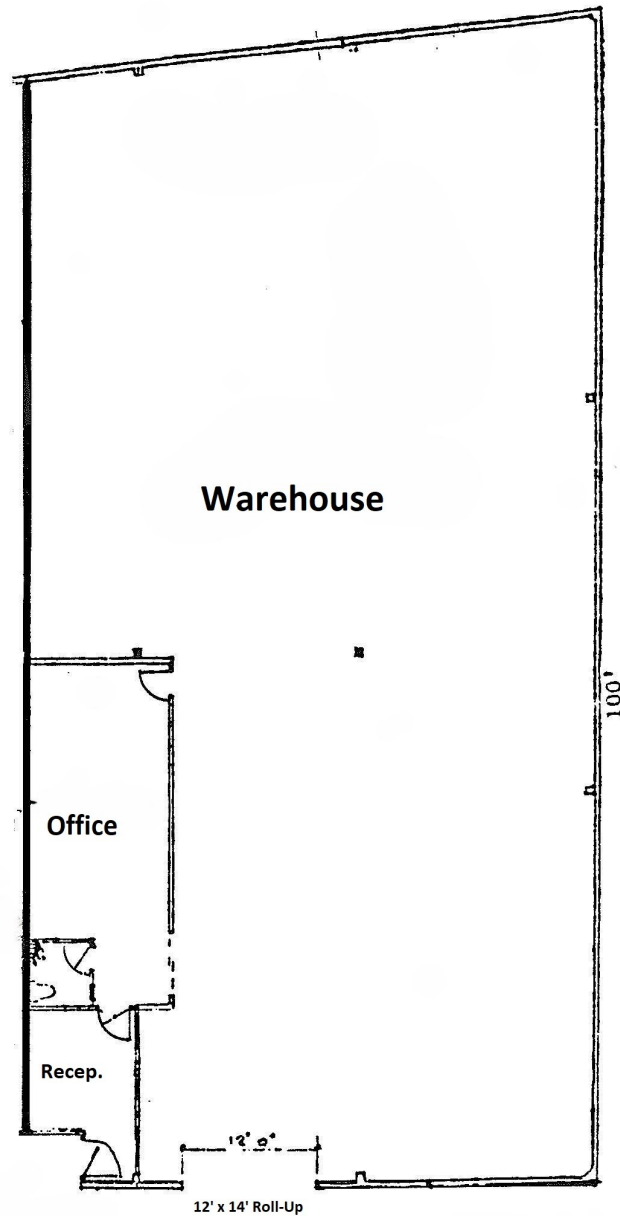


Contact Listing Broker:
Thomas Caple
Director
(510) 908-0505
tom@dpccommercial.com
CA DRE#01089011

Deutscher Properties Corp.
370 Civic Drive
Pleasant Hill, CA
Office (925) 676-6166
Fax (925) 676-6177
www.dpccommercial.com

1381 Franquette Ave., Unit "C-1"

Concord, California



Contact Listing Broker:
Thomas Caple
(510) 908-0505
tom@dpccommercial.com
CA DRE#01089011

Deutscher Properties Corp.
370 Civic Drive
Pleasant Hill, CA
Office (925) 676-6166
Fax (925) 676-6177
www.dpccommercial.com

The site plan illustrates the layout of the Jacuzzi Concord Property. It features several buildings: BUILDING "C" at the top left, with Unit C-1 highlighted in yellow; BUILDING "D" to its south; BUILDING "B" in the center, with two annexes labeled SPACE B1 and SPACE B2; and BUILDING "A" & A-1 to the east of Building B. Two additional structures are labeled BUILDING "A-3". The property is bounded by Franquette Avenue to the south and east. A north arrow is located in the lower right quadrant of the plan. The plan is titled "1 Site Plan" in a large circle at the bottom left.

TITLE	Site Plan	SCALE	n.t.s.	DATE:	1 August 2020	ISSUE:
Jacuzzi Concord Property 1381 Franquette Avenue Concord, California 94520						

Deutscher Properties Corp.
370 Civic Drive
Pleasant Hill, CA
Office (925) 676-6166
Fax (925) 676-6177
www.dpccommercial.com