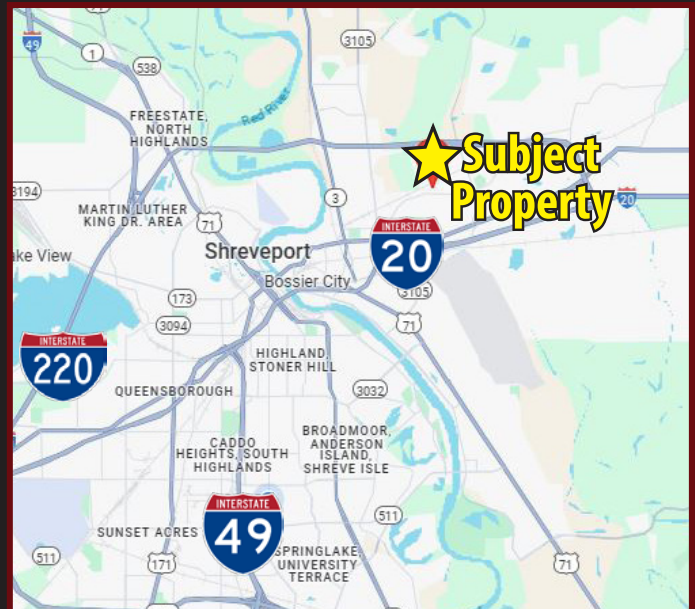




# SHOP WITH BUILDOUT ALLOWANCE FOR LEASE

1313 DRIFTWOOD DR., BOSSIER CITY, LA 71111

- 2,000 SF shop with buildout allowance
- 1 acre± fenced yard
- Detached storage building
- Light industrial
- \$2,900/month NNN



For more information, contact:

**Chris Susilovich | 318.222.2244 | [csusilovich@vintagerealty.com](mailto:csusilovich@vintagerealty.com)**

**Jason Brady | 318.222.2244 | [jbrady@vintagerealty.com](mailto:jbrady@vintagerealty.com)**

ALL INFORMATION CONTAINED HEREIN IS BELIEVED TO BE ACCURATE, BUT IS NOT WARRANTED AND NO LIABILITY OF ERRORS OR OMISSIONS IS ASSURED BY EITHER THE PROPERTY OWNER OR VINTAGE REALTY COMPANY OR ITS AGENTS AND EMPLOYEES. PRICES AS STATED HEREIN AND PRODUCT AVAILABILITY IS SUBJECT TO CHANGE AND/OR SALE OR LEASE WITHOUT PRIOR NOTICE, AND ALL SIZES AND DIMENSIONS ARE SUBJECT TO CORRECTION. REV 12/2024



# SHOP FOR LEASE

1313 DRIFTWOOD DR.,  
BOSSIER CITY, LA 71111



For More Information Contact:

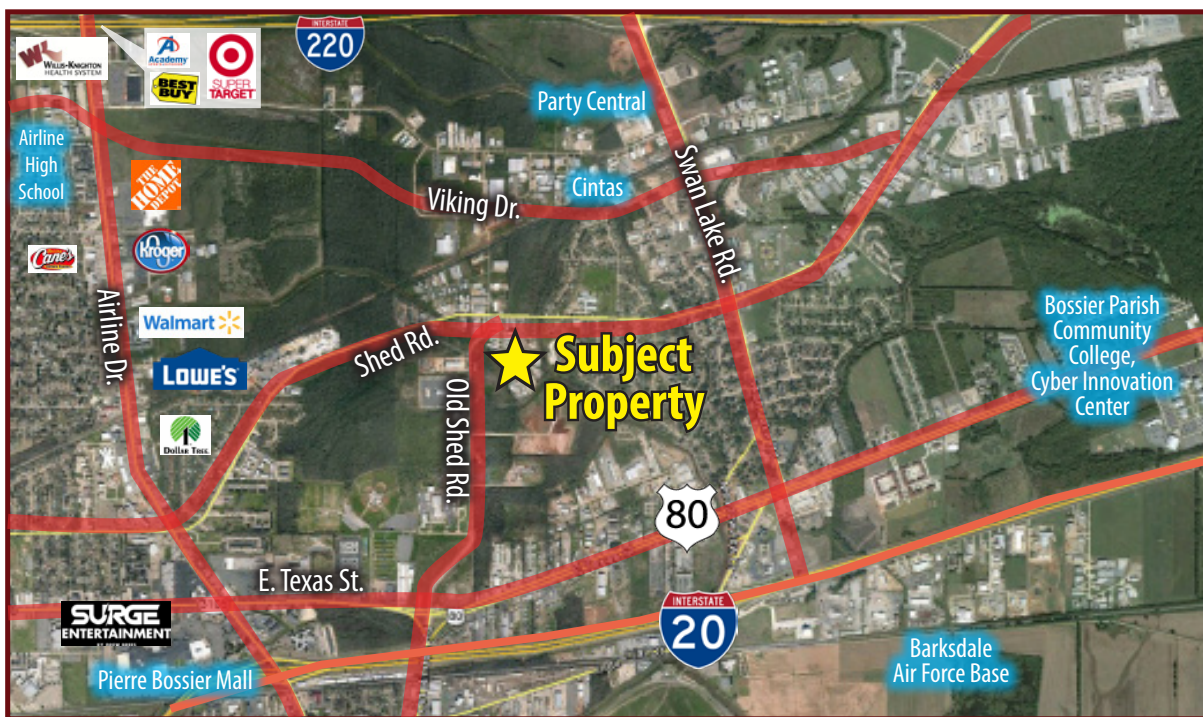
**Chris Susilovich | 318.222.2244 | [csusilovich@vintagerealty.com](mailto:csusilovich@vintagerealty.com)**

**Jason Brady | 318.222.2244 | [jbrady@vintagerealty.com](mailto:jbrady@vintagerealty.com)**

ALL INFORMATION CONTAINED HEREIN IS BELIEVED TO BE ACCURATE, BUT IS NOT WARRANTED AND NO LIABILITY OF ERRORS OR OMISSIONS IS ASSURED BY EITHER THE PROPERTY OWNER OR VINTAGE REALTY COMPANY OR ITS AGENTS AND EMPLOYEES. PRICES AS STATED HEREIN AND PRODUCT AVAILABILITY IS SUBJECT TO CHANGE AND/OR SALE OR LEASE WITHOUT PRIOR NOTICE, AND ALL SIZES AND DIMENSIONS ARE SUBJECT TO CORRECTION. 12/2024

# SHOP FOR LEASE

1313 DRIFTWOOD DR.,  
BOSSIER CITY, LA 71111



For More Information Contact:

**Chris Susilovich | 318.222.2244 | [csusilovich@vintagerealty.com](mailto:csusilovich@vintagerealty.com)**

**Jason Brady | 318.222.2244 | [jbrady@vintagerealty.com](mailto:jbrady@vintagerealty.com)**

ALL INFORMATION CONTAINED HEREIN IS BELIEVED TO BE ACCURATE, BUT IS NOT WARRANTED AND NO LIABILITY OF ERRORS OR OMISSIONS IS ASSURED BY EITHER THE PROPERTY OWNER OR VINTAGE REALTY COMPANY OR ITS AGENTS AND EMPLOYEES. PRICES AS STATED HEREIN AND PRODUCT AVAILABILITY IS SUBJECT TO CHANGE AND/OR SALE OR LEASE WITHOUT PRIOR NOTICE, AND ALL SIZES AND DIMENSIONS ARE SUBJECT TO CORRECTION. 12/2024