

PRO•DUC•TION | 195 BOSSTICK BLVD



SUITES 100 & 150 AVAILABLE

195 BOSSTICK BLVD | SAN MARCOS | CALIFORNIA | 92069

FOR MORE INFORMATION:

ARIC STARCK
760.431.4211
aric.starck@cushwake.com

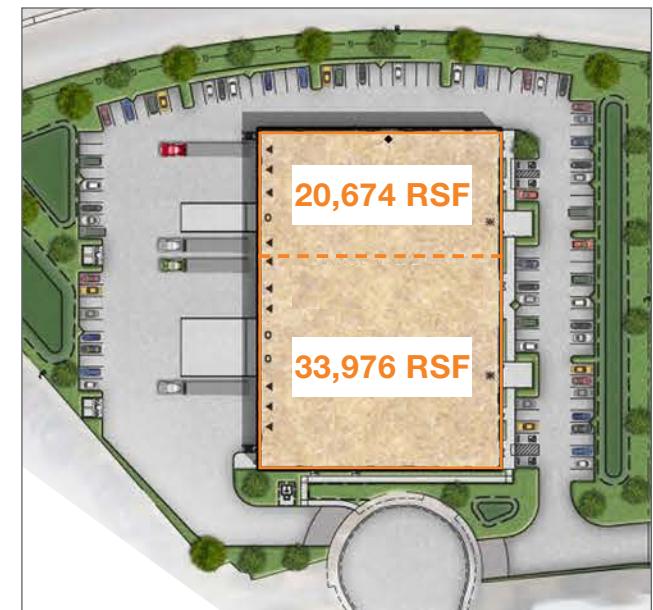
DREW DODDS
760.431.3863
drew.dodds@cushwake.com

CUSHMAN & WAKEFIELD
12830 El Camino Real, Suite 100
San Diego, CA 92130



PROPERTY FEATURES

- ±54,641 SF, demisable to 20,674 SF & 33,967 SF
- ±4,719 SF mezzanine area
- ±4,719 SF office space
- 2 glass roll-up doors
- 10 dock-high doors
- 3 grade-level door
- 28' clear height
- 2,000 A 277/480v
- 60'x52' column spacing
- 120' minimum truck opening
- ESFR fire sprinklers
- 1.90/1,000 parking ratio
- Built in 2018



PRO•DUC•TION | 195 BOSSTICK BLVD

SITE PLAN

UNDER NEW OWNERSHIP



FOR MORE INFORMATION

ARIC STARCK

760.431.4211

aric.starck@cushwake.com

DREW DODDS

760.431.3863

drew.dodds@cushwake.com

CUSHMAN & WAKEFIELD

12830 El Camino Real, Suite 100

San Diego, CA 92130

PRO•DUC•TION

195 BOSSTICK BLVD

SAN MARCOS, CA 92069



AVAILABILITIES

AVAILABLE

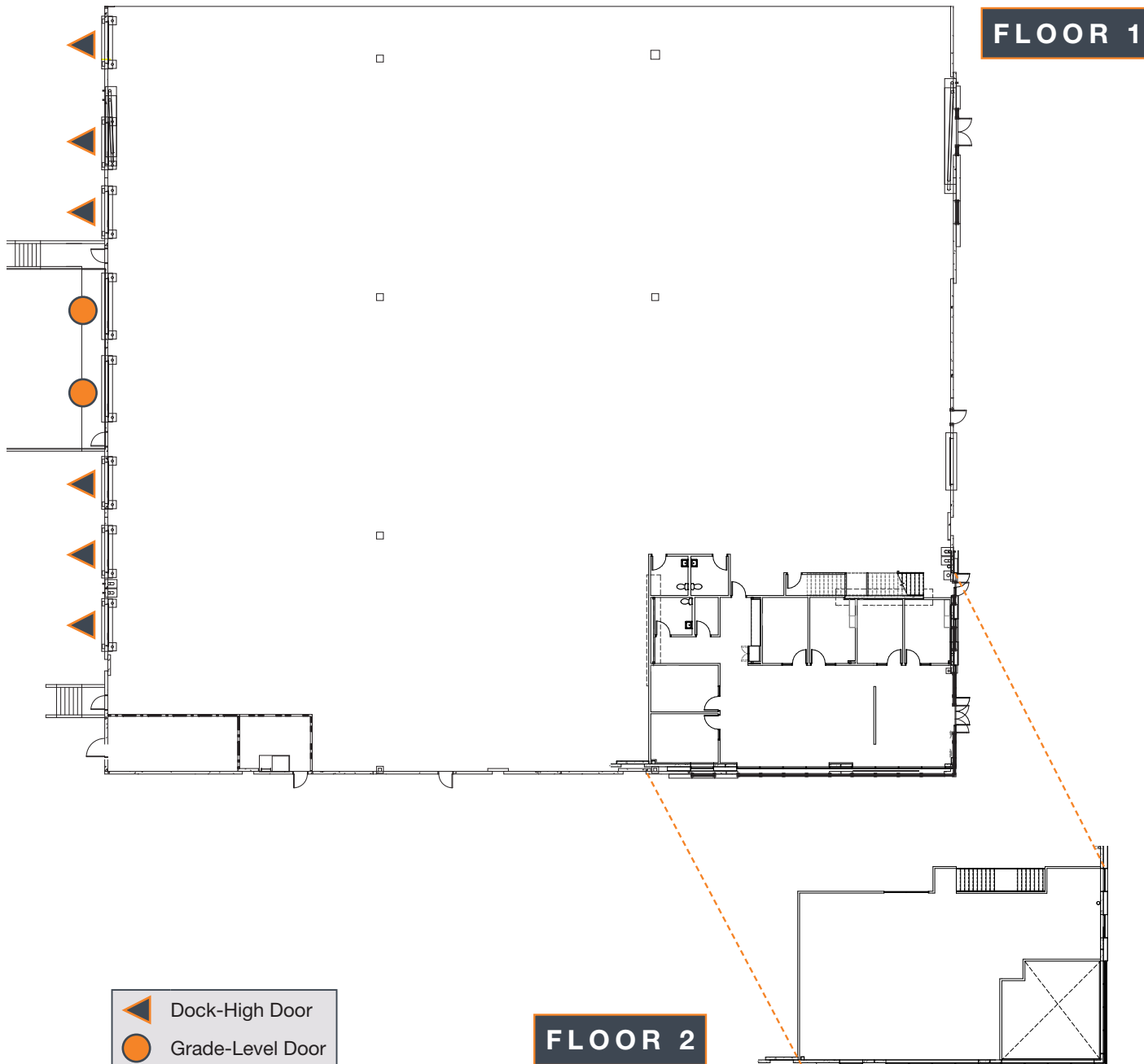
OCCUPIED

SUITE	TOTAL SF	OFFICE SF	MEZZANINE SF	DOORS	AVAILABLE
150	20,674	±2,404	±2,404	4 dock-high, 1 grade-level	Immediately
100	33,967	±2,315	±2,315	6 dock-high, 2 grade-level	August 2024

195 BOSSTICK BLVD | SUITE 100

33,967 RSF

UNDER NEW OWNERSHIP

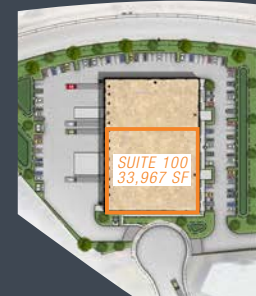


FOR MORE INFORMATION

ARIC STARCK
760.431.4211
aric.starck@cushwake.com

DREW DODDS
760.431.3863
drew.dodds@cushwake.com

CUSHMAN & WAKEFIELD
12830 El Camino Real, Suite 100
San Diego, CA 92130



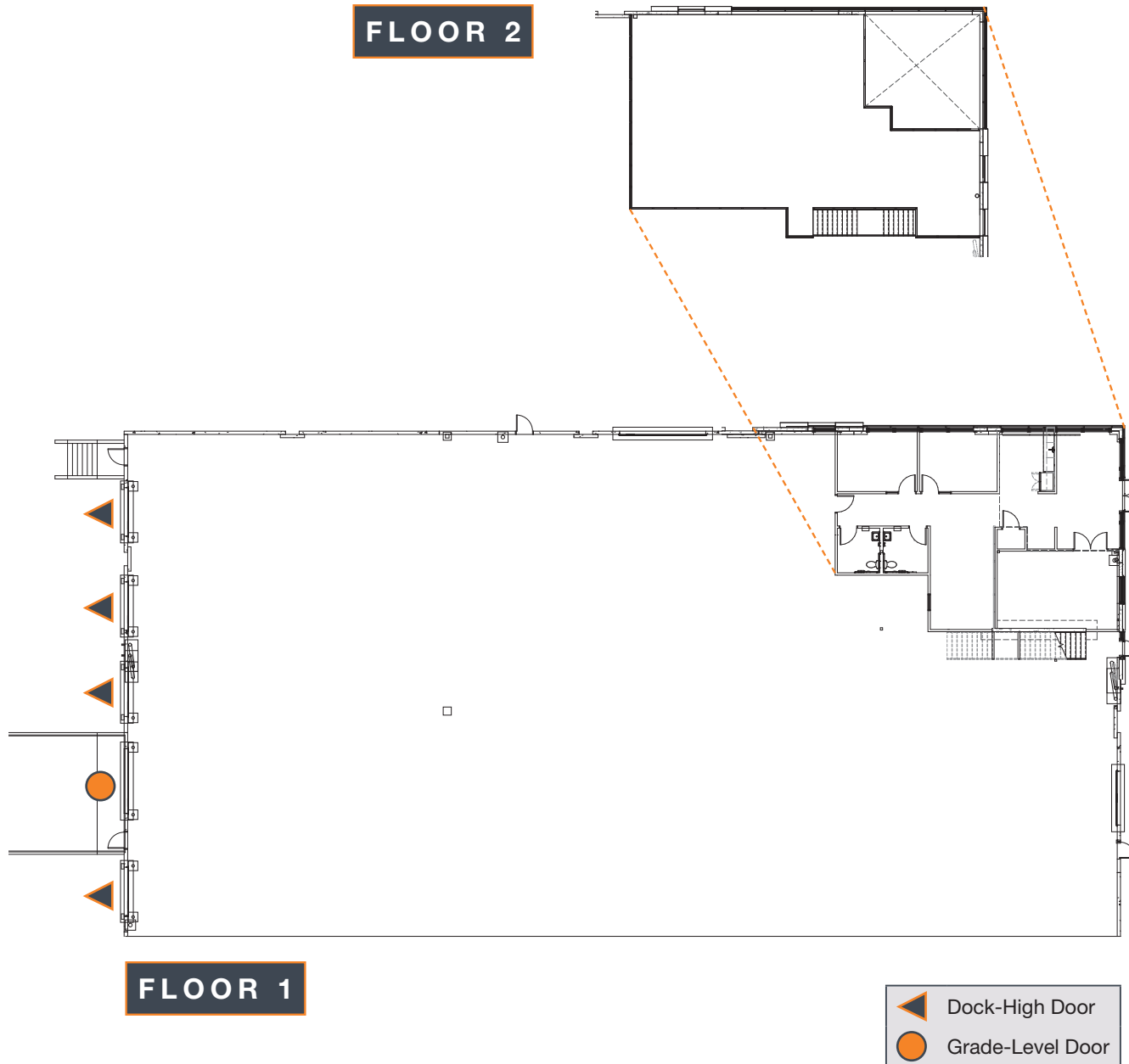
PRO•DUC•TION
195 BOSSTICK BLVD, SUITE 100
SAN MARCOS, CA 92069



195 BOSSTICK BLVD | SUITE 150

20,674 RSF

UNDER NEW OWNERSHIP

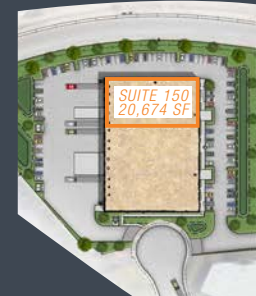


FOR MORE INFORMATION

ARIC STARCK
760.431.4211
aric.starck@cushwake.com

DREW DODDS
760.431.3863
drew.dodds@cushwake.com

CUSHMAN & WAKEFIELD
12830 El Camino Real, Suite 100
San Diego, CA 92130



PRO•DUC•TION
195 BOSSTICK BLVD, SUITE 150
SAN MARCOS, CA 92069



PRO•DUC•TION | 195 BOSSTICK BLVD

UNDER NEW OWNERSHIP



FOR MORE INFORMATION

ARIC STARCK
760.431.4211
aric.starck@cushwake.com

DREW DODDS
760.431.3863
drew.dodds@cushwake.com

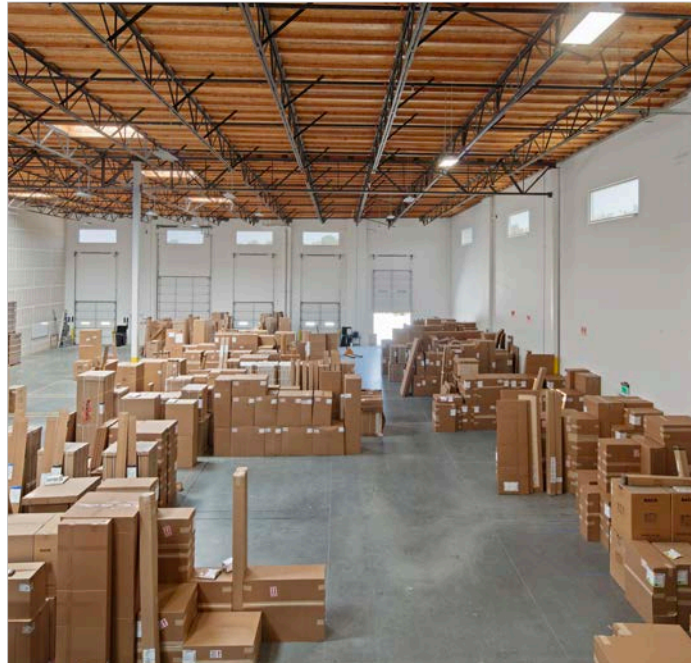
CUSHMAN & WAKEFIELD
12830 El Camino Real, Suite 100
San Diego, CA 92130

PRO•DUC•TION
195 BOSSTICK BLVD
SAN MARCOS, CA 92069



PRO•DUC•TION | 195 BOSSTICK BLVD

UNDER NEW OWNERSHIP



FOR MORE INFORMATION

ARIC STARCK
760.431.4211
aric.starck@cushwake.com

DREW DODDS
760.431.3863
drew.dodds@cushwake.com

CUSHMAN & WAKEFIELD
12830 El Camino Real, Suite 100
San Diego, CA 92130

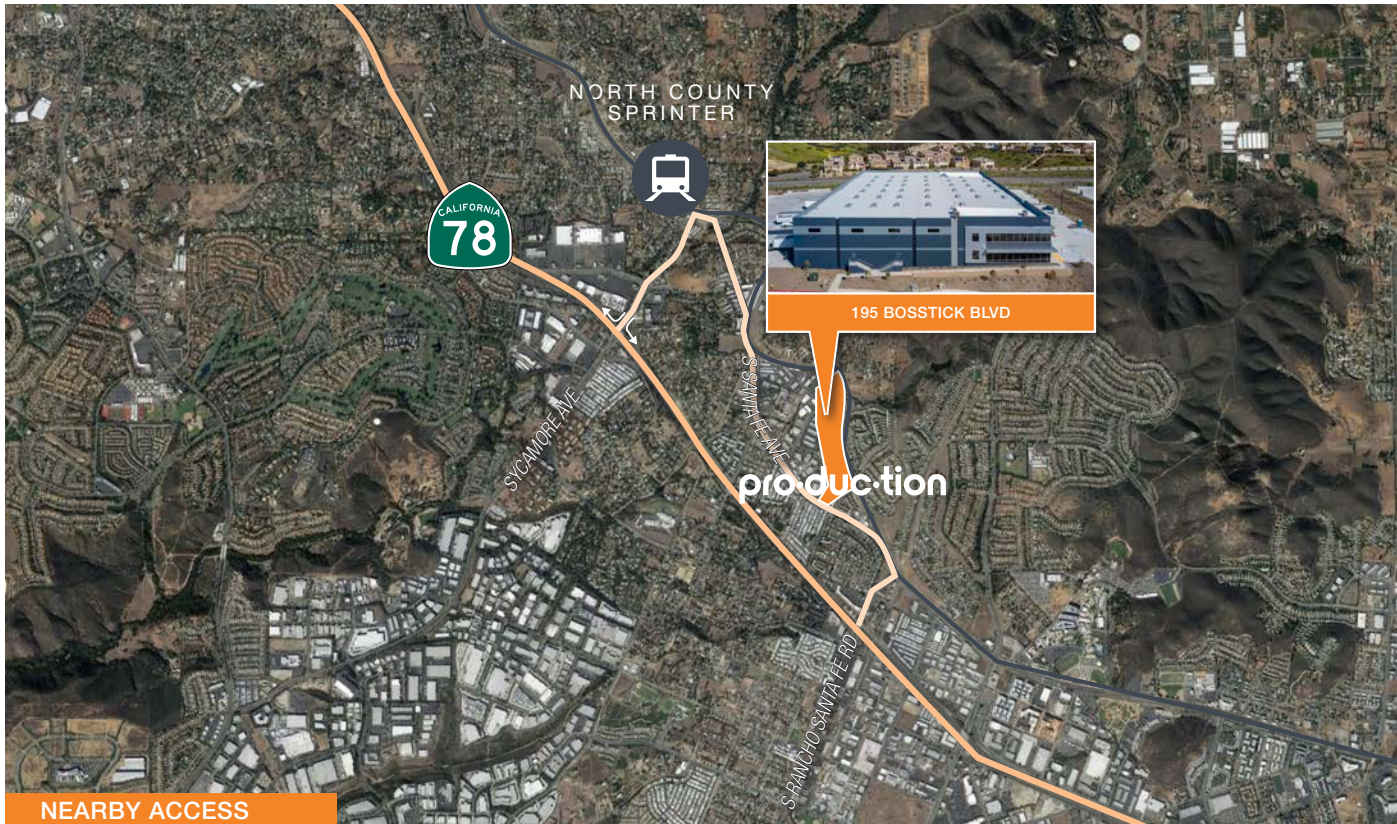
PRO•DUC•TION
195 BOSSTICK BLVD
SAN MARCOS, CA 92069



PRO•DUC•TION | 195 BOSSTICK BLVD

NEIGHBORS & ACCESS

UNDER NEW OWNERSHIP



FOR MORE INFORMATION

ARIC STARCK
Executive Vice Chairman
760.431.4211
aric.starck@cushwake.com
Lic 01325461

DREW DODDS
Senior Associate
760.431.3863
drew.dodds@cushwake.com
Lic 02021095

CUSHMAN & WAKEFIELD
12830 El Camino Real, Suite 100
San Diego, CA 92130

PRO•DUC•TION
195 BOSSTICK BLVD,
SAN MARCOS, CA 92069



TOP OCCUPIERS

Hunter Industries
United Parcel Service
Kaiser Permanente
Lusardi Construction
Teamwork Athletic Apparel
Fluid Components International
Neo Tech
Hollandia Dairy
The Lost Abbey
Welk Resorts
Hughes Circuits
Markestein Beverage
24-Hour Fitness

MAJOR INDUSTRIES

Innovation and Specialized Manufacturing
Connected Tourism and Agriculture
Biomedical Devices and Products
Cleantech
Information, Communications, & Technologies
Education

COLLEGES/UNIVERSITIES

Palomar College, San Marcos
CSU San Marcos, San Marcos
Coleman University, San Marcos
University of San Diego
University of California, San Diego
San Diego State University, San Diego
Pima Medical Institute, San Diego
MiraCosta College, Oceanside
Kaplan College, Vista
National University, Carlsbad
University of St. Augustine

The information contained herein is believed to be accurate but is not warranted as to its accuracy and may change or be updated without notice. Seller or landlord makes no representation as to the environmental condition of the property and recommends purchaser's or tenant's independent investigation.