



Available Now
2,500 SF



For Lease
One Space Left!

Aaron Flynn
208 807 3332
aaron.flynn@colliers.com

Michael McNeight
208 472 2865
michael.mcneight@colliers.com

755 West Front Street, Suite 300
Boise, Idaho 83702
208 345 9000
colliers.com/idaho

1416 Lauren Lane, Suite 102
Caldwell, Idaho 83605

Highlights:

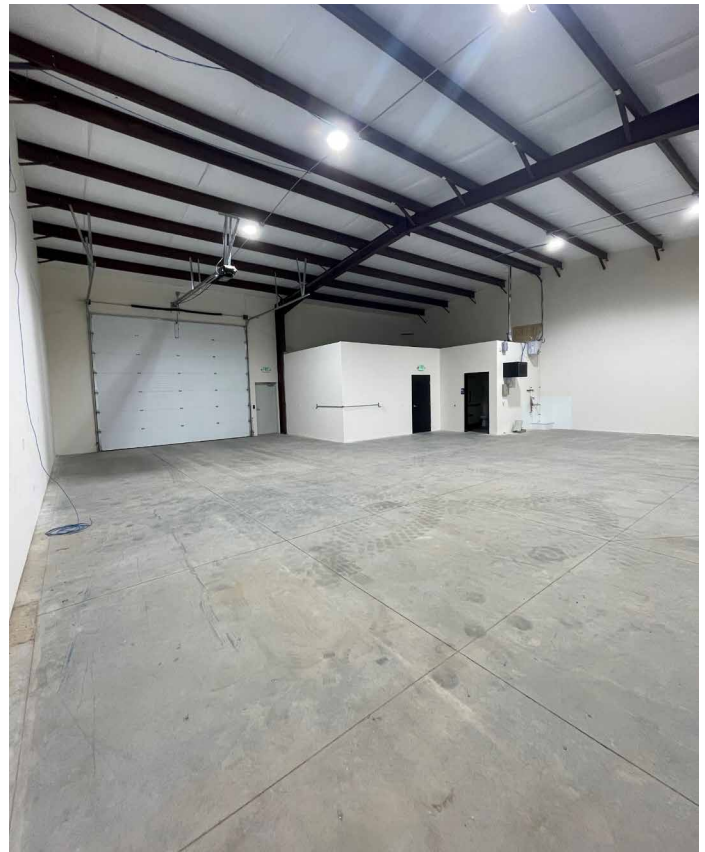
- Available immediately
- Functional floor plan and high end office finishes
- Ideally located within Sky Ranch Business Park
- 18' clear height in warehouse

This document has been prepared by Colliers for advertising and general information only. Colliers makes no guarantees, representations or warranties of any kind, expressed or implied, regarding the information including, but not limited to, warranties of content, accuracy and reliability. Any interested party should undertake their own inquiries as to the accuracy of the information. Colliers excludes unequivocally all inferred or implied terms, conditions and warranties arising out of this document and excludes all liability for loss and damages arising there from. This publication is the copyrighted property of Colliers and /or its licensor(s). © 2025. All rights reserved. This communication is not intended to cause or induce breach of an existing listing agreement. Colliers Treasure Valley, LLC.

For Lease

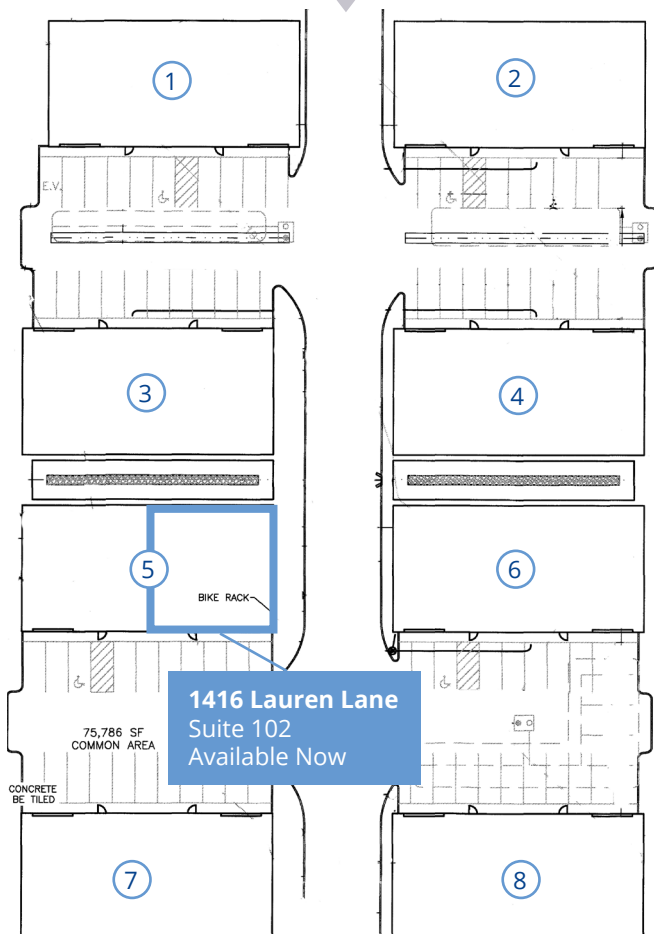
Property Information

Property Type	Industrial
Total Building Size	5,000 SF
Zoning	Light Industrial
Ceiling Height	18'
Grade Level Drive-In Doors	16' x 14'
Lease Rate	Contact Agent
NNN Est.	\$0.26 PSF
Available	Immediately



Site Plan

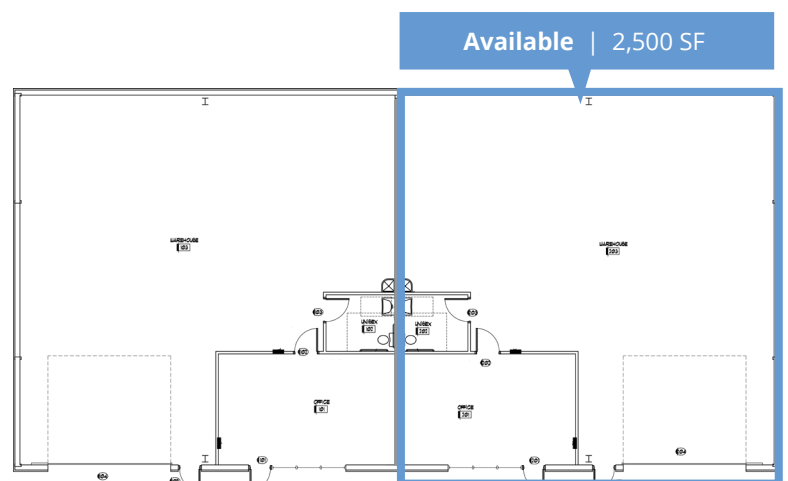
Business Park Entrance



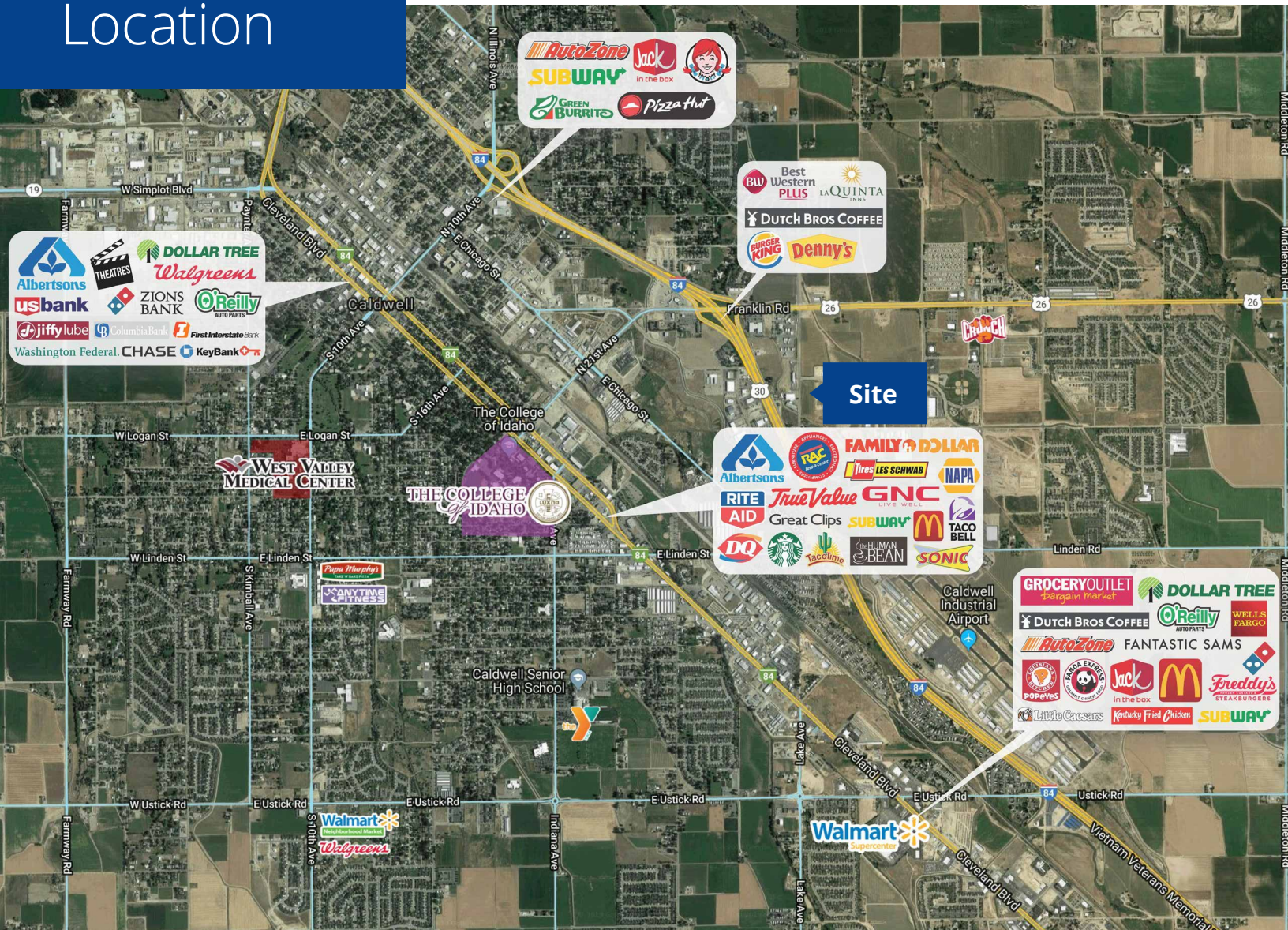
Space Available

Suite	Size	Rate
102	2,500 SF	Contact Agent

Floor Plan



Location



755 West Front Street, Suite 300
 Boise, Idaho 83702
 208 345 9000
colliers.com/idaho